



For Lease

630 Forest Avenue

Staten Island, NY

7,836 SF Divisible

S/W/C of Forest Avenue and Oakland Avenue

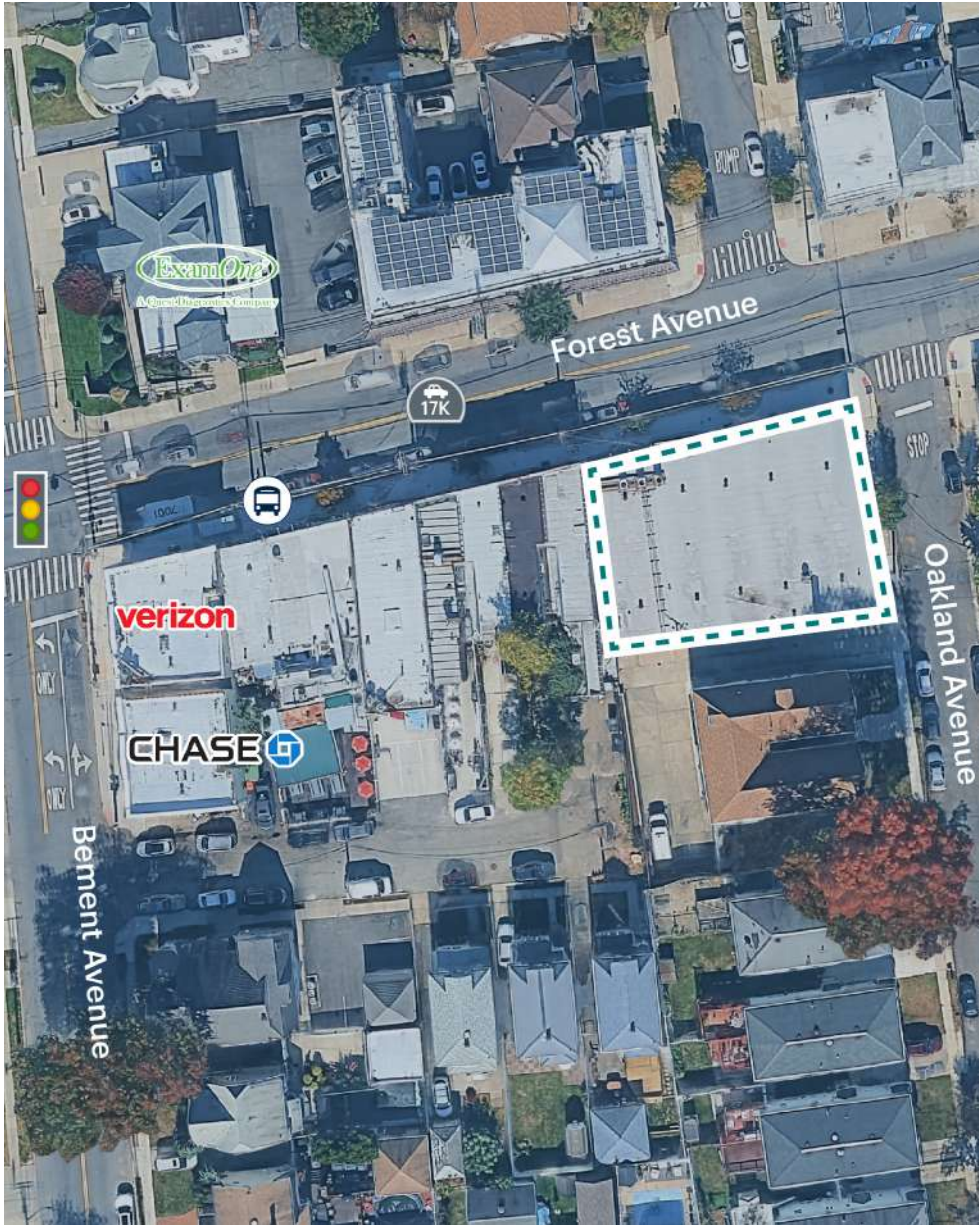
RIPCO
RETAIL LEASING

Contact
Exclusive Agents

Jeremy Isaacs
jisaacs@ripcony.com | 516.933.8880

Jack Chera
jchera@ripcony.com | 516.933.8880

Space Details

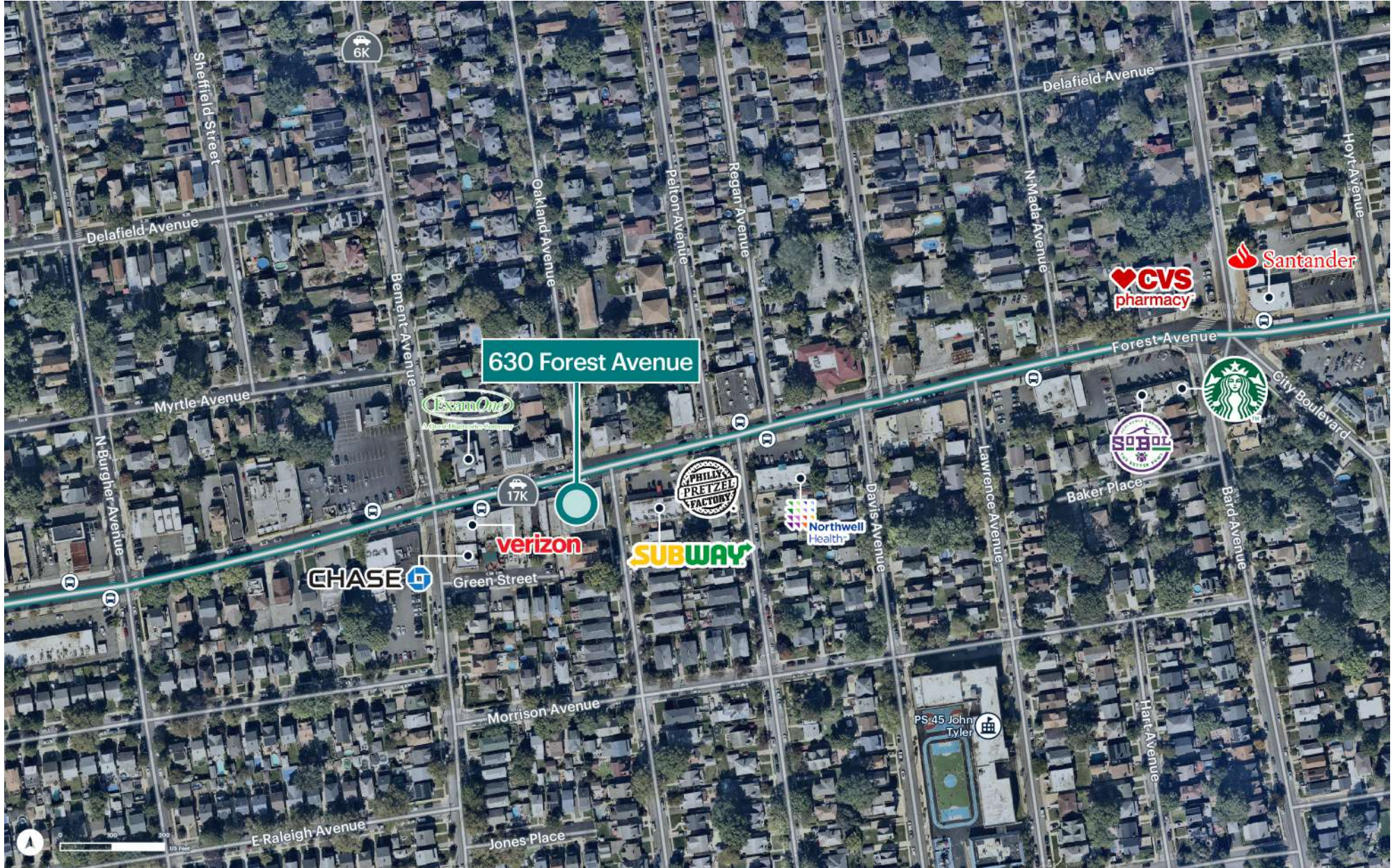


Location	S/W/C of Forest Avenue and Oakland Avenue
Size	Ground Floor 7,836 SF - Divisible as small as 2,000 SF
Term	Long term lease available
Rent	Upon request
Neighbors	Don Roberto's Classic Italian, Moretti Bakery, Duffy's, Verizon, Northside Coffee, Italo A&S Fine Foods, Pastosa Ravioli, Molly's Boutique, Dunkin', McDonald's, Wonder, Muscle Up Gym, Burrito Bar, Panini Grill, Rustic Music North Shore, 3 Guys Sushi, Northfield Bank, Kings Arms Diner, Carvel, Starbucks, CVS Pharmacy, Santander Bank, Key Food Marketplace, Citibank, Crumbl, Insomnia Cookies, Shah's Halal, Better Gourmet Health Kitchen
Comments	Over 17,000 vehicles pass this site daily on Forest Avenue Corner property with excellent visibility Space is divisible

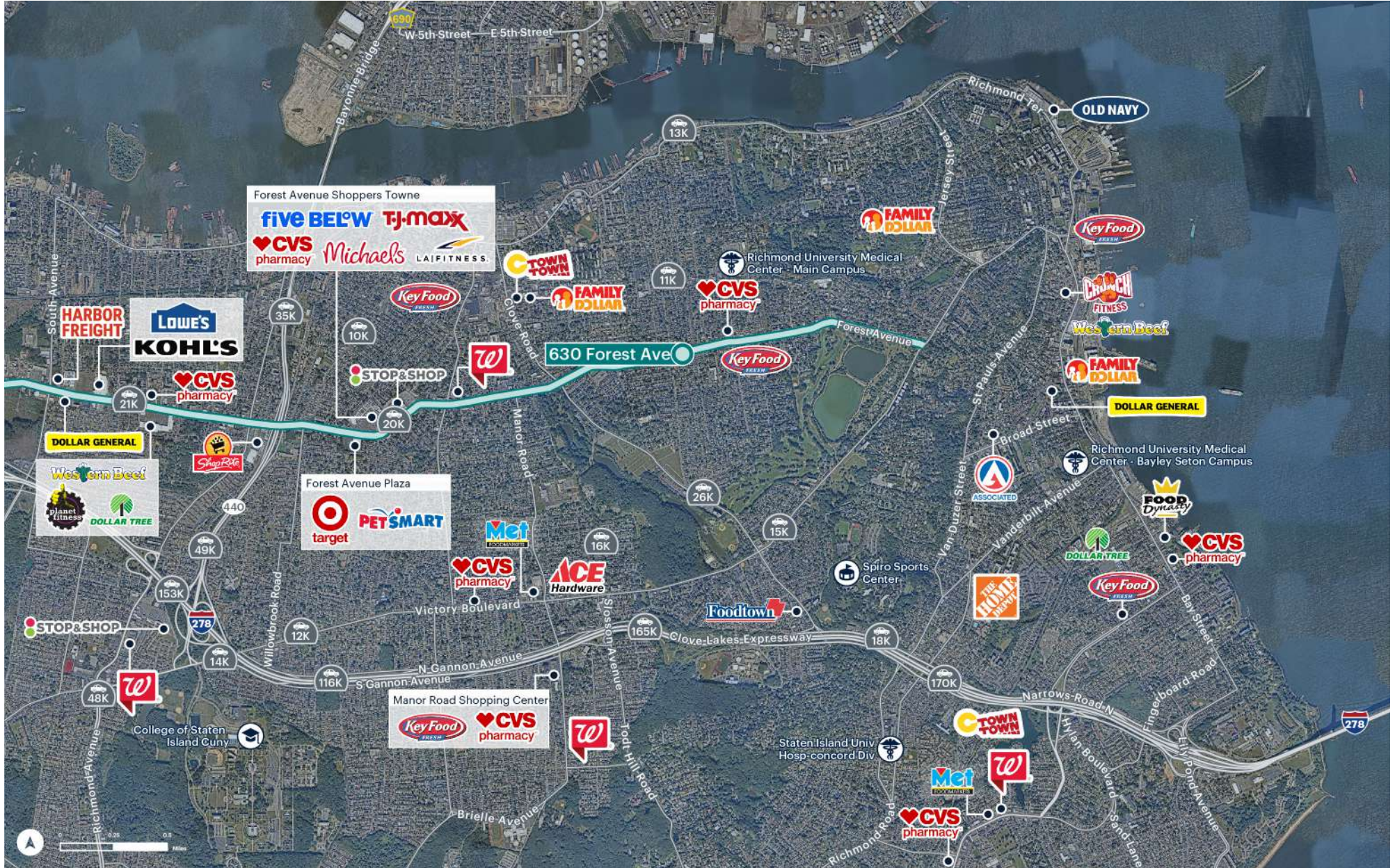
Site Photos



Area Retail



Area Retail



Area Demographics



	1 mile	2 miles	3 miles
Population	35,343	157,197	291,106
Total Households	12,424	55,167	102,363
Average Household Income	\$122,994	\$112,104	\$115,033
Median Household Income	\$103,973	\$85,012	\$87,422
% Population with Bachelors +	38.39%	34.94%	36.38%
Daytime Population	30,760	135,338	251,193
Total Daytime Employees	11,875	47,200	89,857
Total Businesses	897	3,674	6,349