

For Lease

RIPCO
RETAIL LEASING

145 Kent Avenue

East block between North 5th
and 6th Streets

Williamsburg
Brooklyn, NY



2,086 SF Ground Floor

Excellent visibility and brand exposure in Brooklyn's most dynamic neighborhood

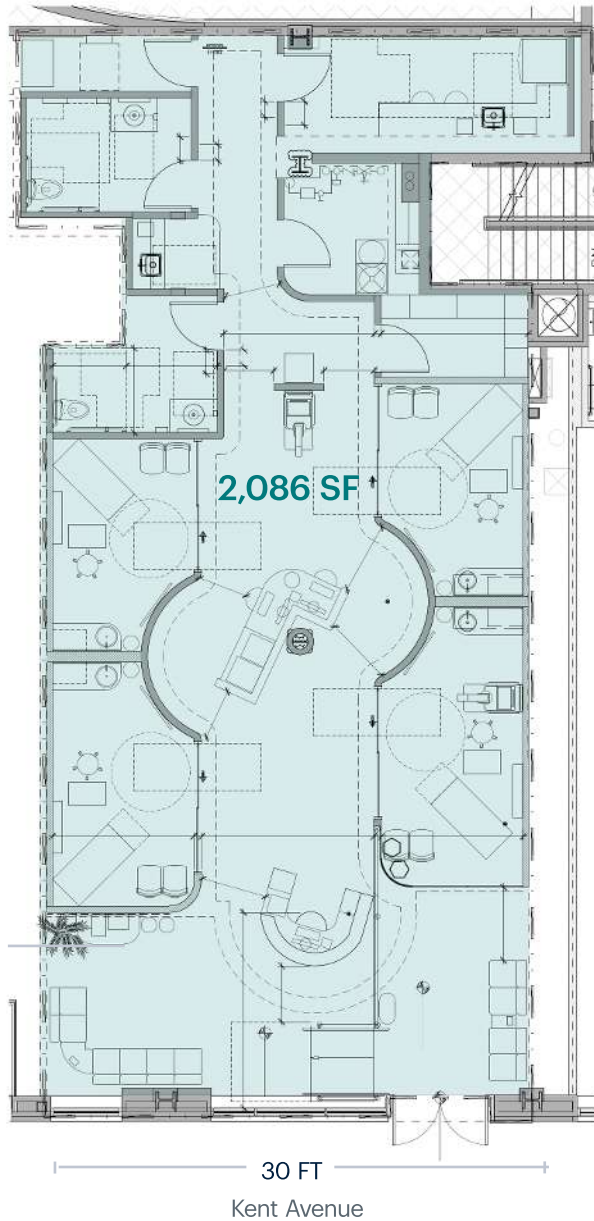
Contact
Exclusive Agents

Brendan Reichenbacher
ber@ripcony.com 718.704.1452

Ben Weiner
bweiner@ripcony.com 646.827.1442

Jason Pennington
jpennington@ripcony.com 212.750.0917

Space Details



Location	East block of North 5th and 6th Streets	
Size	Ground Floor	2,086 SF
Frontage	30 FT on Kent Avenue	
Ceilings	16 FT	
Possession	Arranged	
Status	Formerly GoHealth Urgent Care	
Term	Negotiable	
Rent	Upon request	
Co-Tenants	FedEx Office, Restore Hyper Wellness, Keila Jewelry	
Neighbors	Uniqlo, Trader Joe's, Nike, Patagonia, Muji, Wonder, OrangeTheory Fitness, Ever/Body, Reformation, Birkenstock, J. Crew, PureBarre, Brooklinen, CVS, Brooklyn Harvest Market, Avocado, Progressive Pilates, Peachy, Chip City, JaJaJa	
Comments	<p>Clean space with high ceilings and glass frontage provide excellent visibility and brand exposure in Brooklyn's most dynamic neighborhood.</p> <p>Located along Kent Ave. which is a high-density residential and retail corridor.</p> <p>Pedestrian traffic is enhanced by the site's adjacency to Williamsburg's N. 6th Street retail corridor with tenants including Hermes and Chanel, as well as Domino Park to the South and Bushwick Inlet Park to the North.</p>	

**Contact
Exclusive
Agents**

Brendan Reichenbacher
ber@ripcony.com
 718.704.1452

Ben Weiner
bweiner@ripcony.com
 646.827.1442

Jason Pennington
jpennington@ripcony.com
 212.750.0917

32 Court Street, 10th Floor, Brooklyn, NY 11201 | ripcony.com

Information is from sources deemed reliable, but the accuracy is not guaranteed. Square footage is approximate. Buyer must independently verify all information and assumes all risk for inaccuracies.

Property Photos



Contact
Exclusive
Agents

Brendan Reichenbacher
ber@ripcony.com
718.704.1452

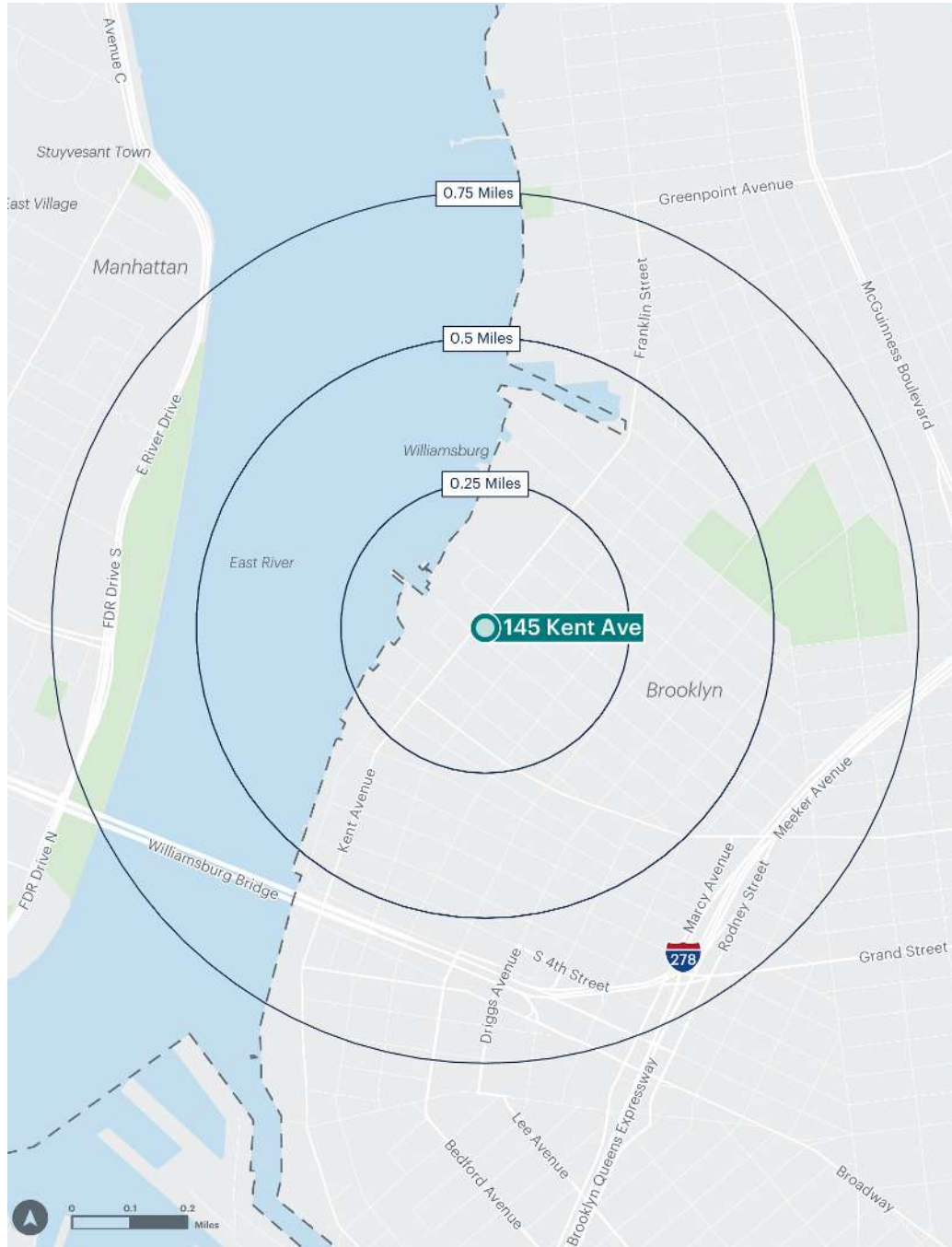
Ben Weiner
bweiner@ripcony.com
646.827.1442

Jason Pennington
jpennington@ripcony.com
212.750.0917

32 Court Street, 10th Floor, Brooklyn, NY 11201 | ripcony.com

Information is from sources deemed reliable, but the accuracy is not guaranteed. Square footage is approximate. Buyer must independently verify all information and assumes all risk for inaccuracies.

Area Demographics



Population	.25 mile	10,356	Daytime Population	.25 mile	9,156
	.50 miles	25,661		.50 miles	26,060
	.75 miles	59,837		.75 miles	58,421
Total Consumer Spending-Retail Goods	.25 mile	\$341,263,732	Average Household Income	.25 mile	\$241,953
	.50 miles	\$788,022,419		.50 miles	\$229,193
	.75 miles	\$1,401,243,800		.75 miles	\$191,265
Total Housing Units	.25 mile	6,173	Total Businesses	.25 mile	544
	.50 miles	15,419		.50 miles	1,442
	.75 miles	31,716		.75 miles	2,874

Contact Exclusive Agents

Brendan Reichenbacher
ber@ripcony.com
 718.704.1452

Ben Weiner
bweiner@ripcony.com
 646.827.1442

Jason Pennington
jpennington@ripcony.com
 212.750.0917

RIPCO
 RETAIL LEASING

32 Court Street, 10th Floor, Brooklyn, NY 11201 | ripcony.com

Information is from sources deemed reliable, but the accuracy is not guaranteed. Square footage is approximate. Buyer must independently verify all information and assumes all risk for inaccuracies.