



1,500 SF
For Lease

RETAIL SPACE

557 HUDSON STREET

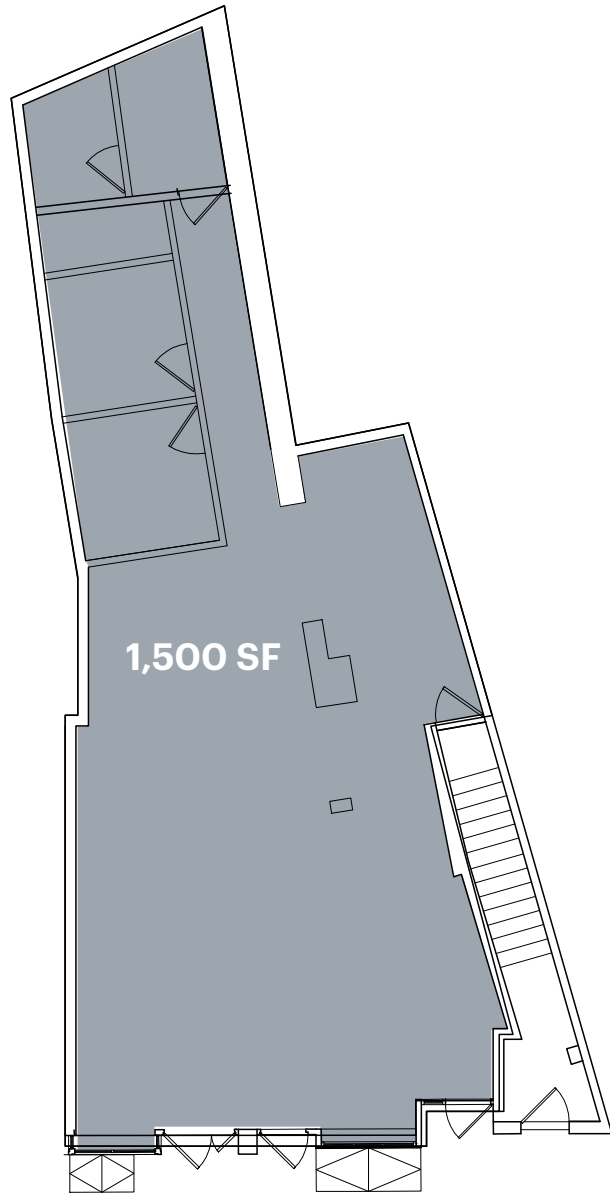
Between Perry and West 11th Street

WEST VILLAGE
MANHATTAN | NY

RIPCO
REAL ESTATE

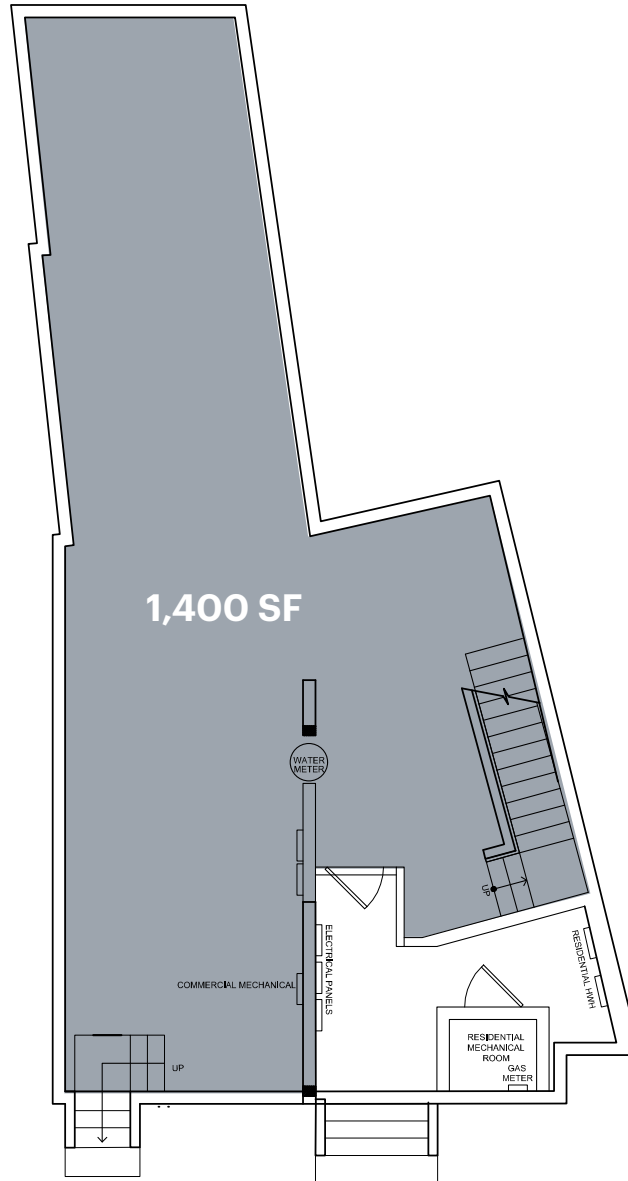
SPACE DETAILS

GROUND FLOOR



APPROX. 36 FT
HUDSON STREET

LOWER LEVEL



LOCATION

Between Perry and West 11th Street

SIZE

Ground Floor 1,500 SF
Lower Level 1,400 SF

FRONTAGE

Hudson Street Approx. 36 FT

STATUS

Currently new development

POSSESSION

Arranged

RENT

Upon request

NEIGHBORS

Dante's, Toby's Estate, White Horse Tavern, Anton's, Airmail, Joe & The Juice, Van Leeuwen, Cursive, Alts, The End of History

COMMENTS

New residential building on Hudson Street with white-boxed retail space at the base
One block from all Bleecker Street retail
Great co-tenancy on this block
New HVAC system ready for incoming tenant

TRANSPORTATION

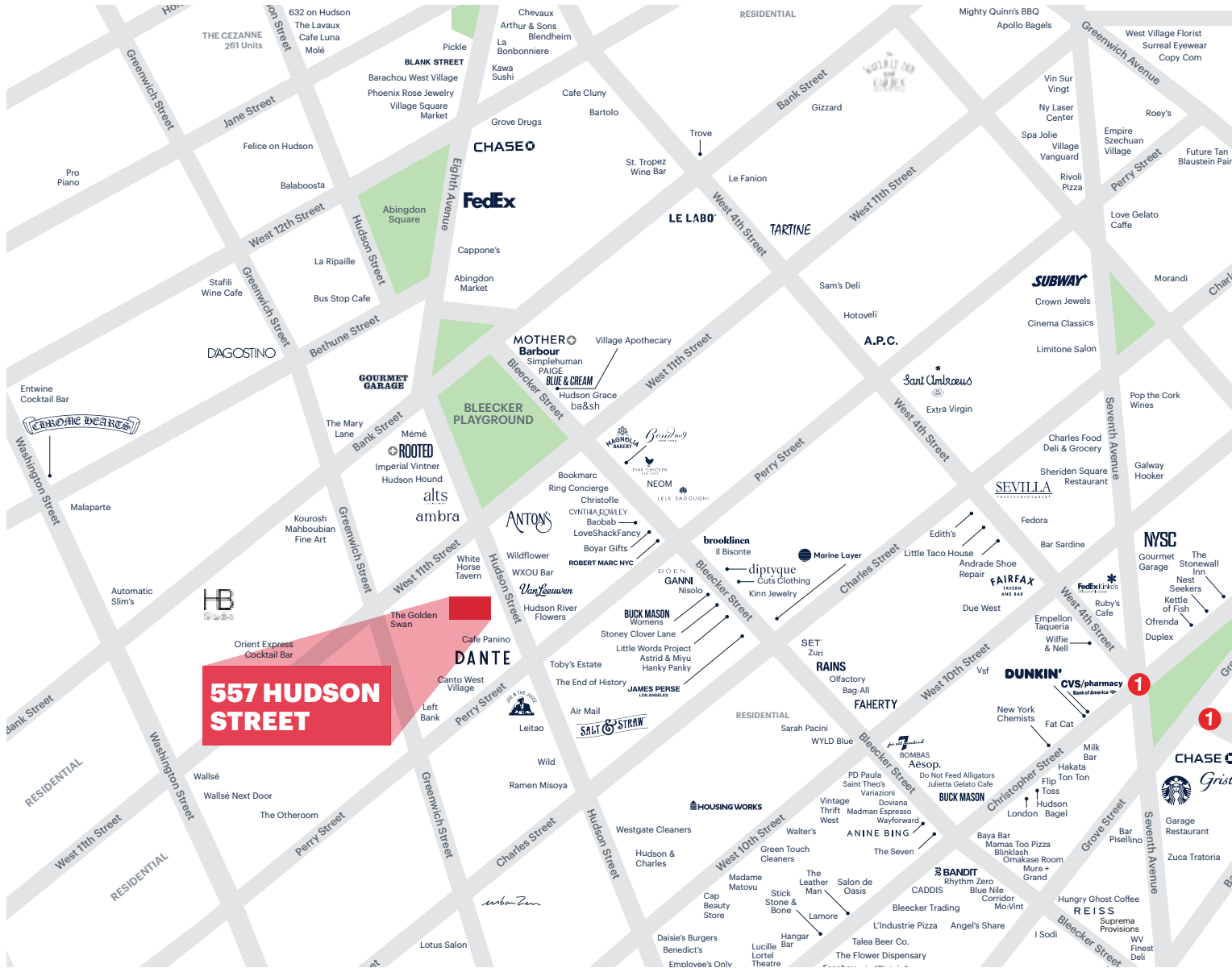
2024 Ridership Report

Christopher St-Stonewall 1
Annual 3,005,038
Weekday 8,448
Weekend 15,589

AREA NEIGHBORS



AREA RETAIL



CONTACT EXCLUSIVE AGENTS

RICHARD SKULNIK
 rskulnik@ripcony.com
 212.750.0756

LINDSAY ZEGANS
 lzegans@ripcony.com
 646.827.9962

BEN SABIN
 bsabin@ripcony.com
 646.290.2018

MARY SCHWAGERL
 mschwagerl@ripcony.com
 212.230.5887

+ Coming Soon



150 East 58th Street
 15th Floor
 New York, NY 10115
 212.750.6565

Please visit us at ripcony.com for more information

This information has been secured from sources we believe to be reliable, but we make no representations as to the accuracy of the information. References to square footage are approximate. Buyer must verify the information and bears all risk for any inaccuracies.