

**RETAIL SPACE**

# 1225 MADISON AVENUE

East block between East 88th and 89th Streets

**UPPER EAST SIDE**

NEW YORK | NY

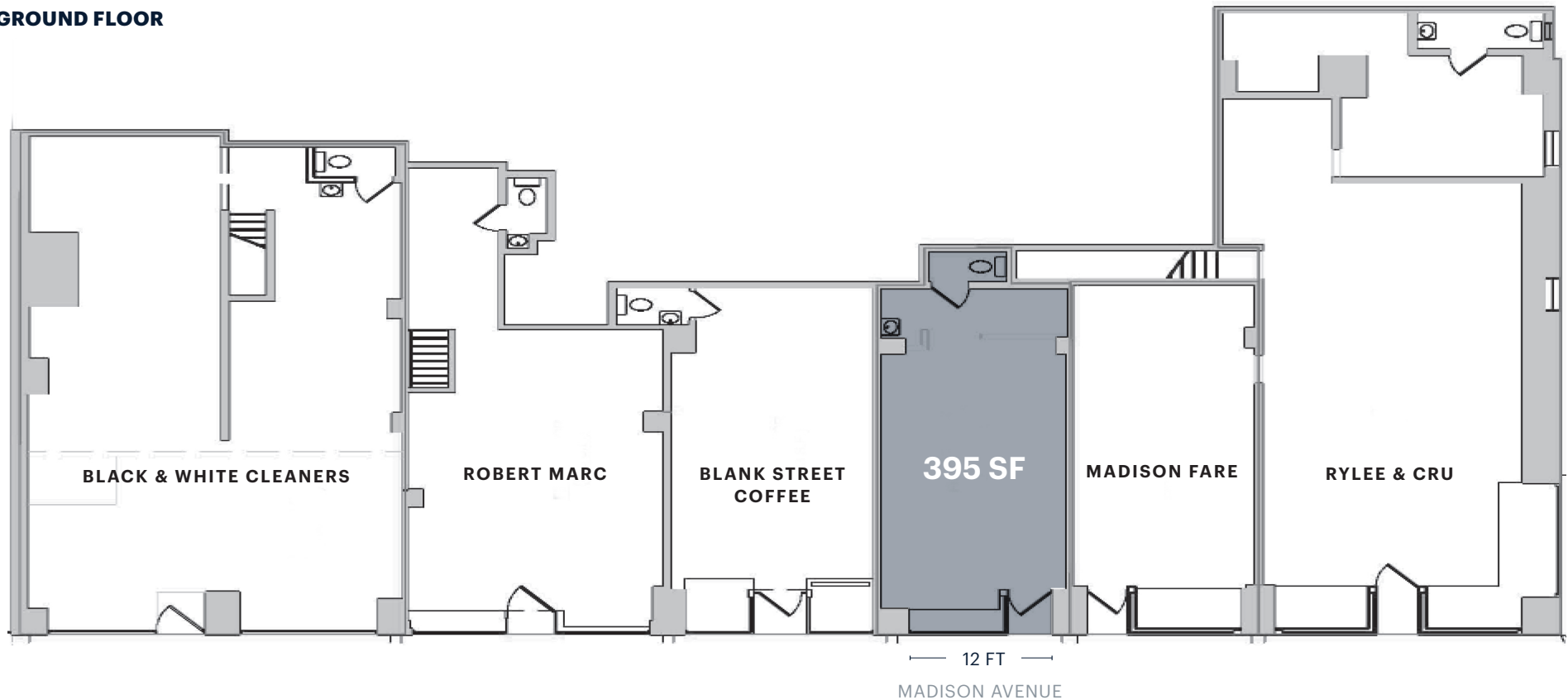
**395 SF**

for Lease



## SPACE DETAILS

### GROUND FLOOR



#### LOCATION

East block between East 88th and 89th Streets

#### SIZE

Ground Floor 395 SF

#### FRONTAGE

Madison Avenue 12 FT

#### CEILING HEIGHTS

Ground Floor 10 FT

#### STATUS

Currently Benefit Brow Bar

#### POSSESSION

Immediate

#### RENT

Upon request

#### NEIGHBORS

Rylee & Cru, Madison Fare, Blank Street Coffee, Robert Marc, Babycottons, Bluemercury, Pink Chicken, and Blue & Cream

#### COMMENTS

Jewel box space

Move-in ready retail in Carnegie Hill

#### TRANSPORTATION

2023 Ridership Report

**86th Street** 4 5 6

Annual 10,472,358

Weekday 32,712

Weekend 40,016

**96th Street** 6

Annual 3,760,351

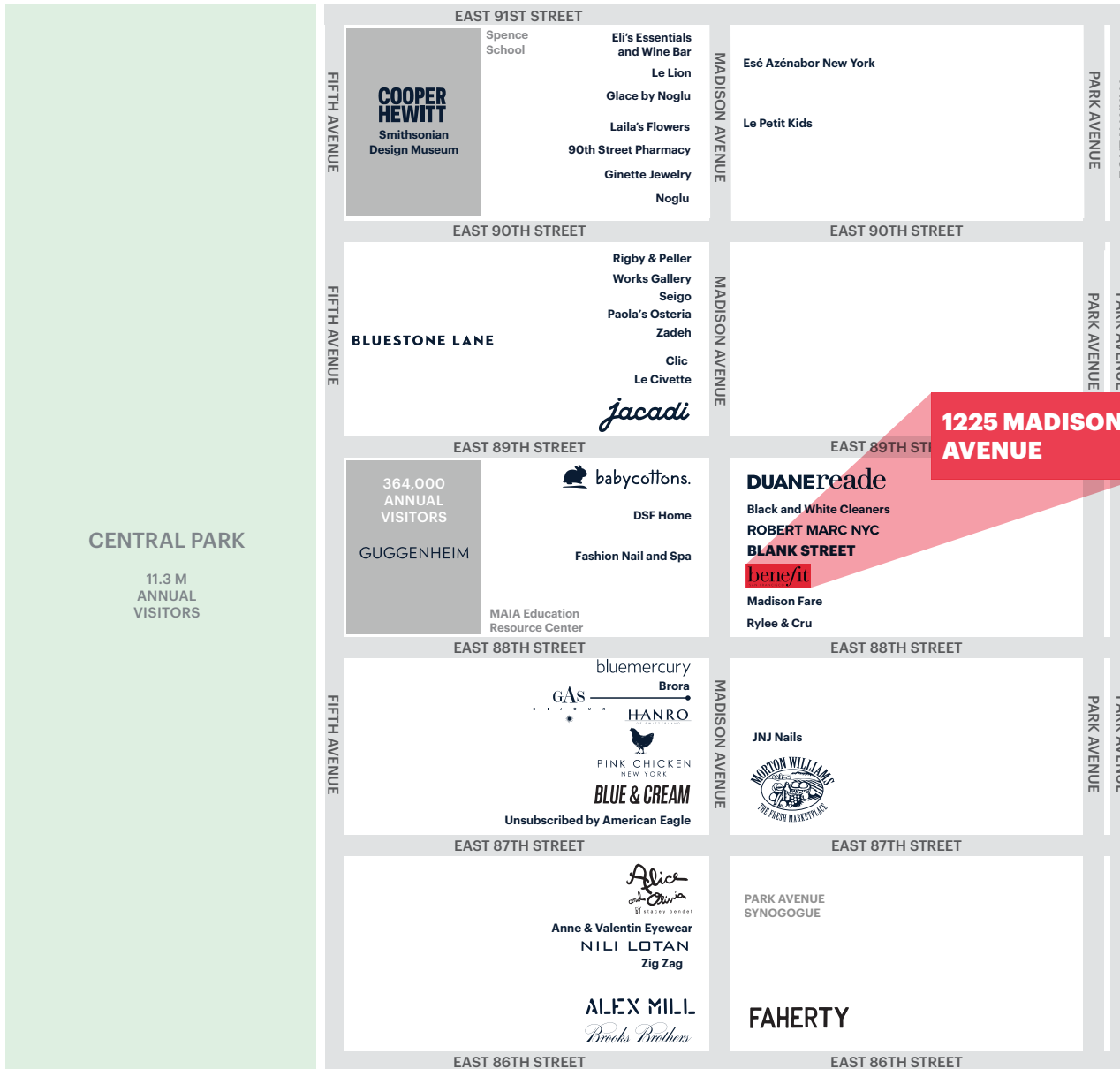
Weekday 12,647

Weekend 10,128

INTERIOR



# AREA RETAIL



CENTRAL PARK

11.3 M ANNUAL VISITORS

1225 MADISON AVENUE

## CONTACT EXCLUSIVE AGENTS

**BETH ROSEN**  
 brosen@ripcony.com  
 212.838.5195

**EMILY KRIPITZ**  
 ekripitz@ripcony.com  
 646.290.2023

+ Coming Soon



150 East 58th Street  
 15th Floor  
 New York, NY 10115  
 212.750.6565

Please visit us at [ripcony.com](http://ripcony.com) for more information

This information has been secured from sources we believe to be reliable, but we make no representations as to the accuracy of the information. References to square footage are approximate. Buyer must verify the information and bears all risk for any inaccuracies.