

RETAIL SPACE

238 EAST 59TH STREET

Between Second and Third Avenues

MIDTOWN EAST
MANHATTAN | NY

3,640 SF

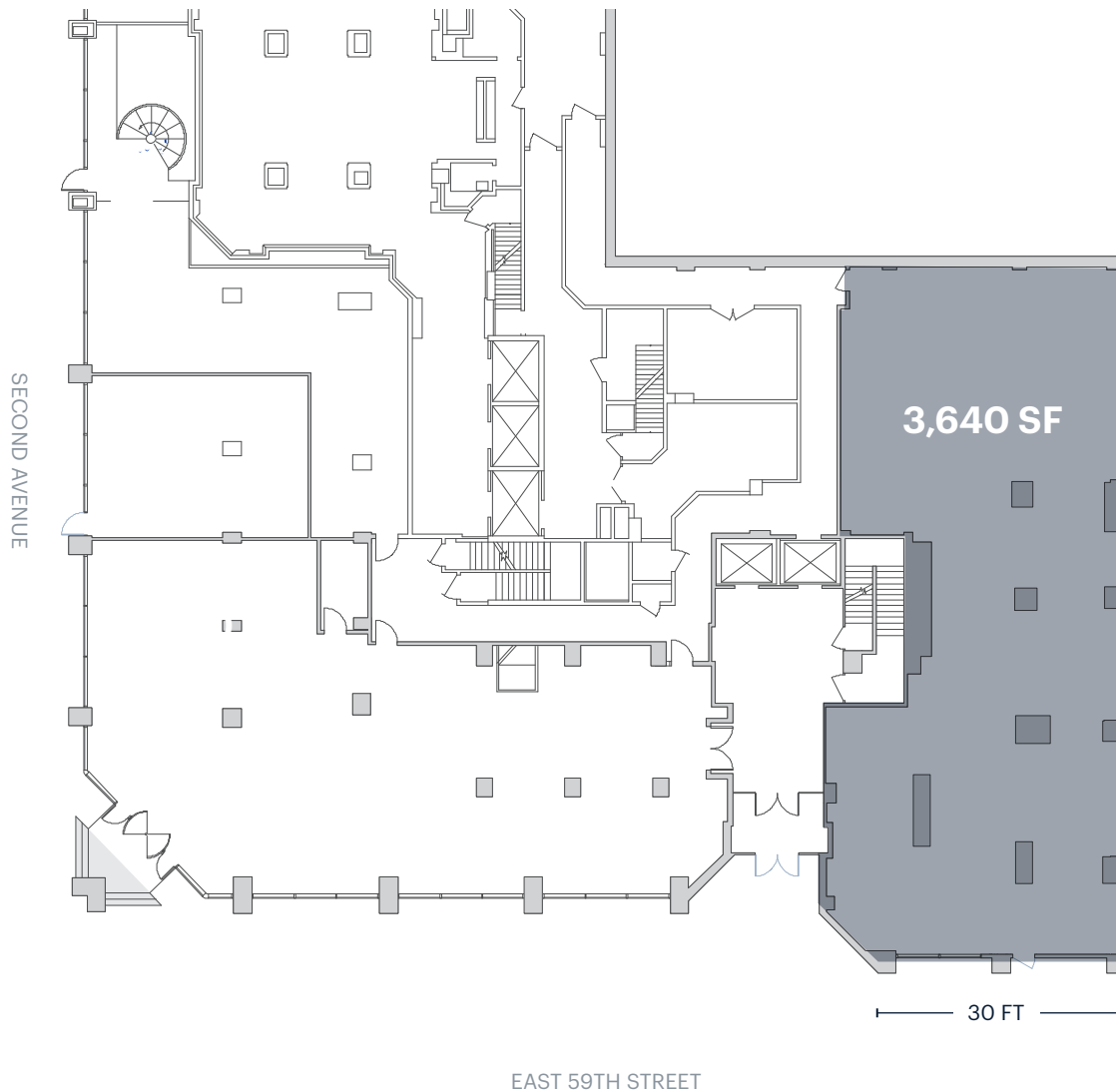
For Lease



RIPCO
REAL ESTATE

SPACE DETAILS

GROUND FLOOR



LOCATION

Between Second and Third Avenues

SIZE

Ground Floor 3,640 SF

FRONTAGE

East 59th Street 30 FT

CEILING HEIGHTS

Ground Floor 12 FT

POSSESSION

Immediate

STATUS

Formerly Safavieh Carpets

NEIGHBORS

CB2, Crunch Fitness, Design Within Reach, Carlos De Le Puente Antiques, Manhattan Cabinetry, Vanden Loom, The Shade Store

COMMENTS

Located in a dense residential market at the base of a 160-unit luxury residential tower adjacent to Weill Cornell Medical Center's entrance

Excellent co-tenancy with the Fine Arts and Decoration & Design Buildings on the block

TRANSPORTATION

2019 Ridership Report

Lexington/East 51st Street
East 53rd Street

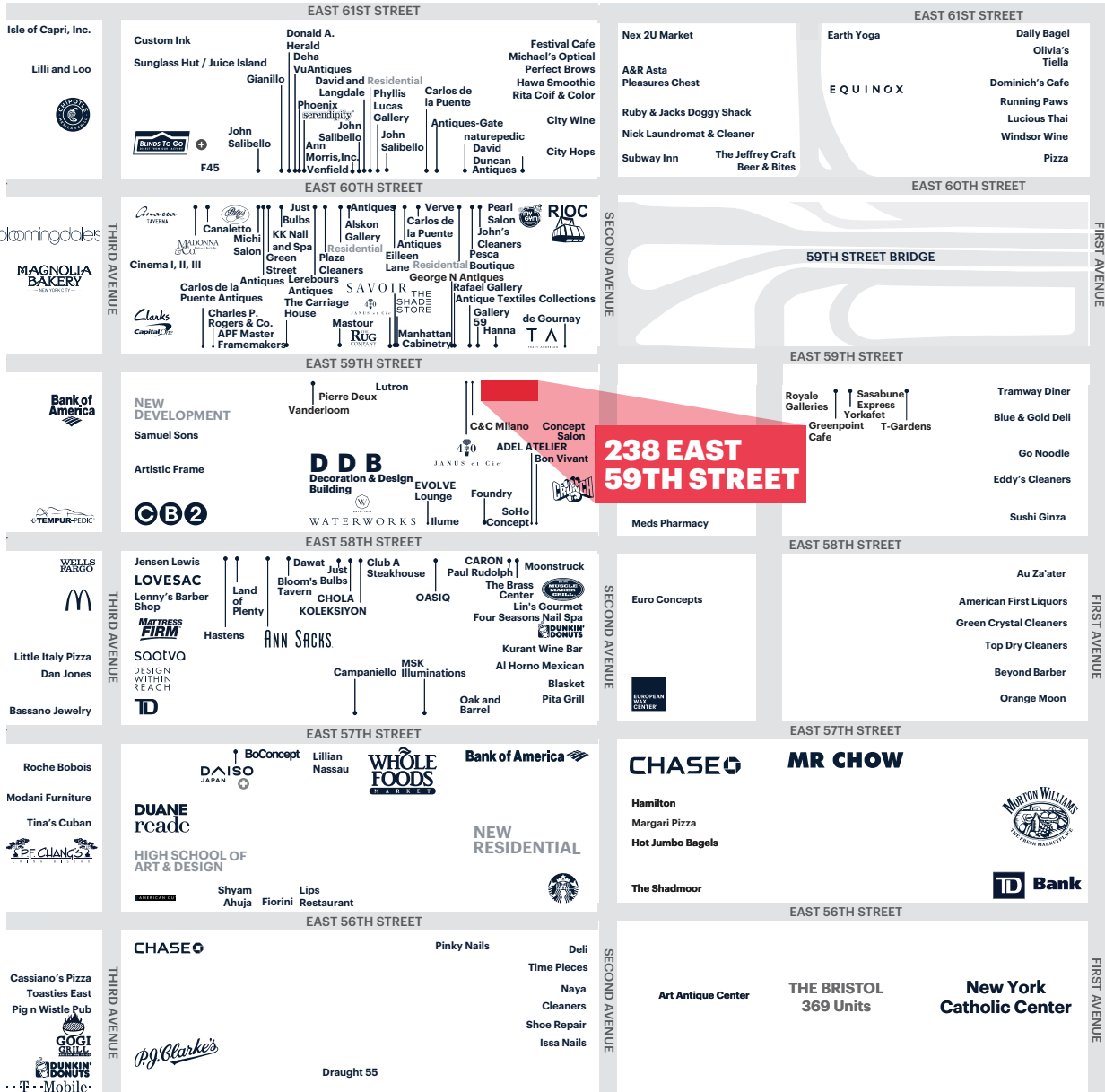
Annual
Weekday
Weekend

E M 6
18,957,465
66,259
38,537

NEWLY RENOVATED INTERIOR



AREA RETAIL



CONTACT EXCLUSIVE AGENTS

RICHARD SKULNIK

rskulnik@ripcony.com

212.750.0756

LINDSAY ZEGANS

lzegans@ripcony.com

646.827.9962

BEN SABIN

bsabin@ripcony.com

646.290.2018

MARY SCHWAGERL

mschwagerl@ripcony.com

212.230.5887

RIPCO
REAL ESTATE

150 East 58th Street
15th Floor
New York, NY 10155
212.750.6565

Please visit us at ripcony.com for more information

This information has been secured from sources we believe to be reliable, but we make no representations as to the accuracy of the information. References to square footage are approximate. Buyer must verify the information and bears all risk for any inaccuracies.

⊕ Coming Soon