

- THE RETAIL AT - BEDFORD SQUARE

877- Unit Residential Development



Building A
Under Development

Building B
Under Development

Building C
Under Development

Building D
Under Development

SITE

ARTIST RENDERINGS

FLATBUSH, BROOKLYN
180,000 SF | Divisible

Strategically positioned at the bustling intersection of Beverly Road and Bedford Avenue, this landmark retail space spans across four levels with 45,000 SF per level.

Located at, "Bedford Square", a 877-unit residential development, this retail opportunity will provide future tenants with direct access to a built-in customer base, making it an attractive community retail hub.

In The Heart Of
BROOKLYN, NYC



RIPCO
REAL ESTATE



BEDFORD
SQUARE

BEDFORD SQUARE DEVELOPMENT



PROPERTY HIGHLIGHTS

The retail spaces at Bedford Square, located at 2360 Bedford Avenue, presents a prime redevelopment opportunity in a high-traffic area, formerly occupied by Sears. Set in Brooklyn's vibrant Flatbush neighborhood, which boasts a daytime population of 138,092 within a one-mile radius, the site is ideal for most retail uses.

With convenient access to nearby bus routes and subway lines (2, 5, B, Q), it offers outstanding connectivity. Surrounded by major retailers like Target, Marshalls, and Burlington, and just steps from Kings Theater, it benefits from high visibility and substantial foot traffic.

SPACE DETAILS

+45,000 SF

Size per Level

11 FT | **16 FT**
LL Ceiling | CF Ceiling

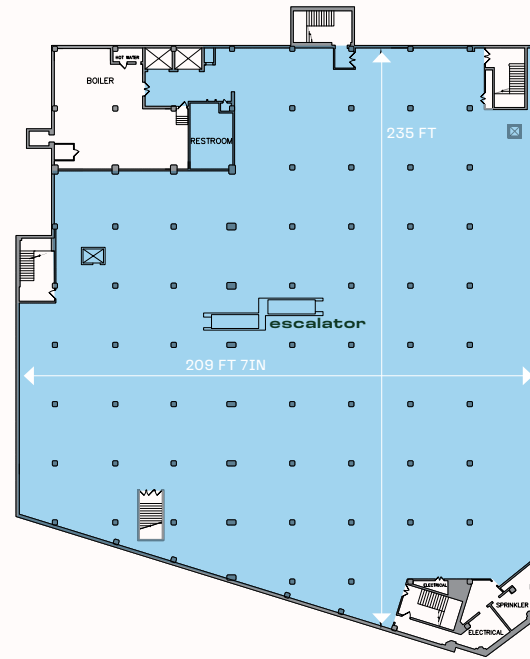
Delivery 2025

Possession

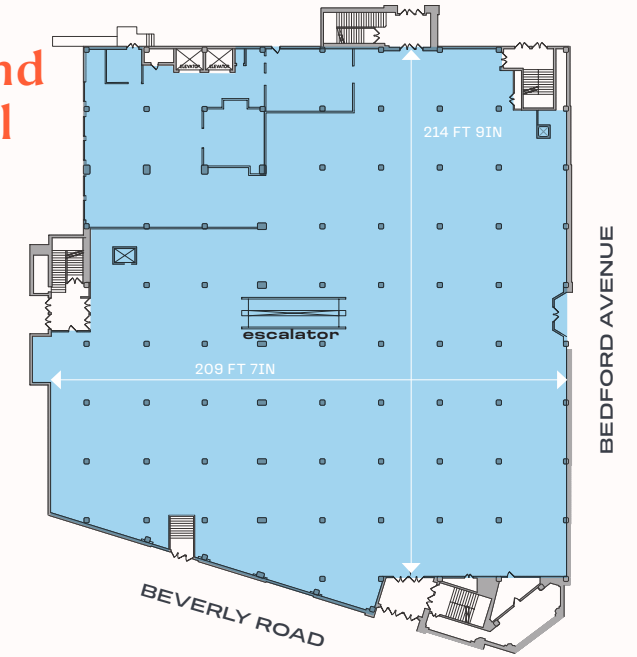
COMMENTS

Logical divisions considered

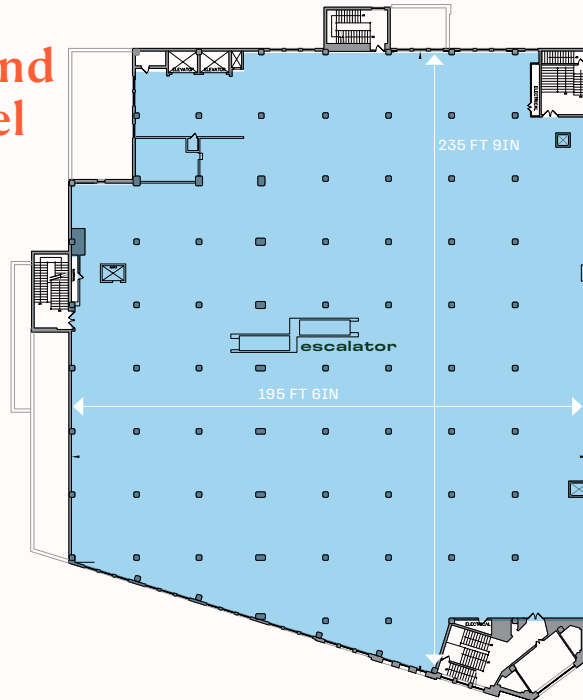
lower
level



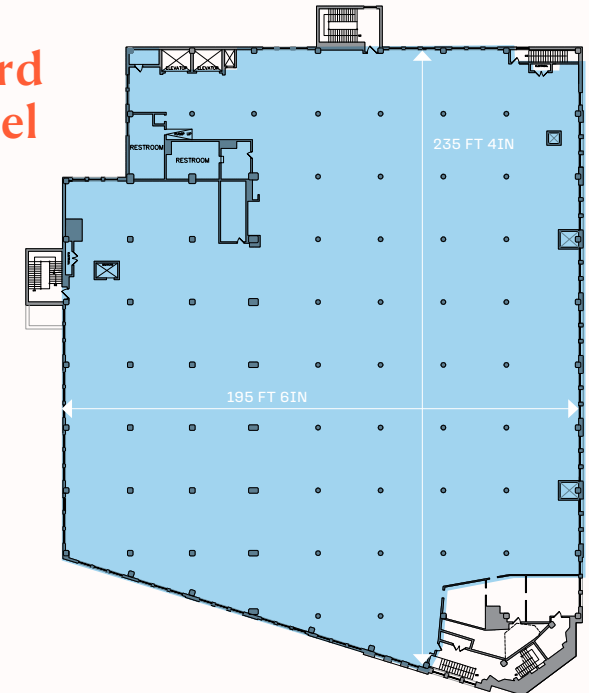
ground
level



second
level

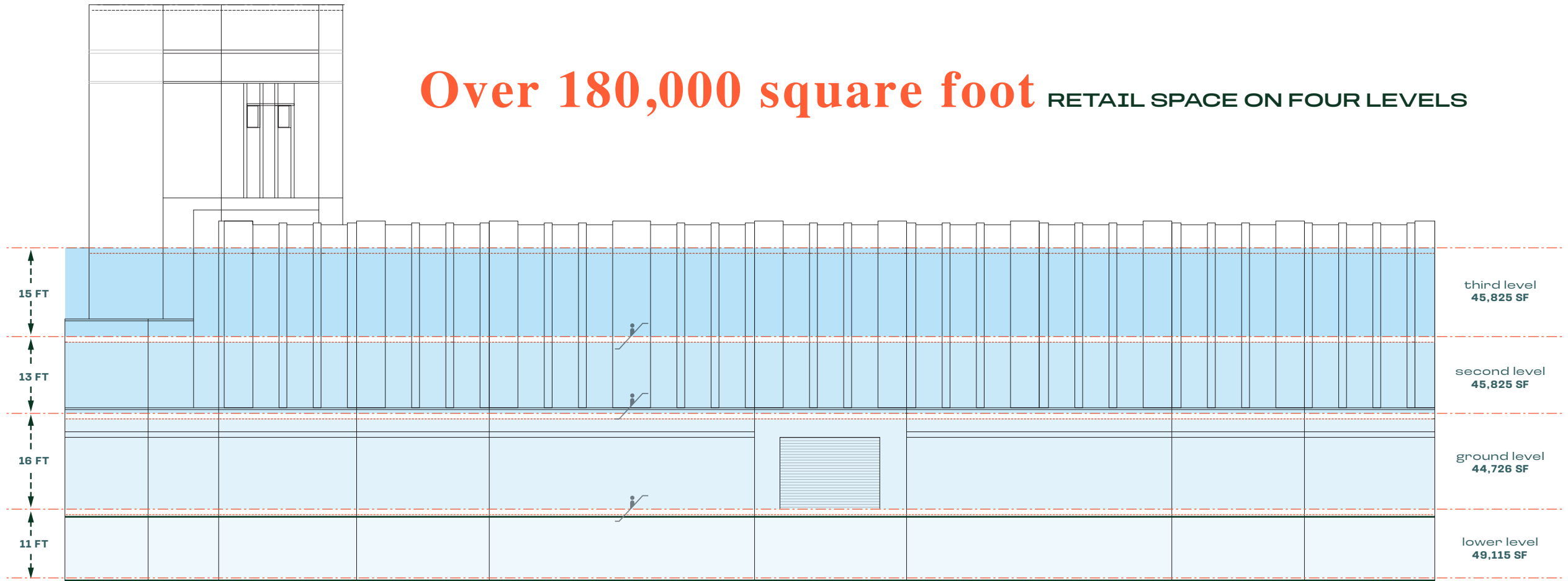


third
level



***Inquire for division plans

Over 180,000 square foot RETAIL SPACE ON FOUR LEVELS



Ideal for showcasing a wide range of products, this venue provides ample room for creative displays and bustling foot traffic. Whether you're looking to attract customers or create a dynamic shopping experience, this flagship location is a perfect fit.

BEDFORD SQUARE
877- Unit Residential Development

SITE

P

PUBLIC PARKING

ARTIST RENDERINGS

Area Demographics Map

area retail (within 10-min walk from site)



distance map



Distance	2024 Total Population	2024 Median Household Income
15 Minute Walk	96K	\$75K
10 Minute Drive	319K	\$78K
0.5 Mile	61K	\$70K
1 Mile	124K	\$82K
1.5 Mile	163K	\$77K

Other Area Demo Types	0.5 Mile	1 Mile	1.5 Mile
Daytime Population	43K	138K	288K
Households	23K	70K	130K
Average HH Income	\$98K	\$109K	\$110K
Daytime Employees	13K	49K	109K
Total Businesses	1.3K	4K	9K
Consumer Spending	\$582M	\$2B	\$3.8B
Annual Budget Expend.	\$1.9B	\$6.7B	\$12.3B

\$582 MILLION TOTAL CONSUMER SPENDING / RETAIL GOODS

WITHIN 0.5 MILE RADIUS FROM SITE

Pipeline Development Map



New Developments

●	2359 BEDFORD AVENUE	877
●	1 123 LINDEN BLVD	467
●	2 800 FLATBUSH AVENUE	255
●	3 220 CLARKSON AVENUE	165
●	4 109 MONTGOMERY STREET	163
●	5 154 CLARKSON AVENUE	116
●	6 222 EAST 21 STREET	108
●	7 2708 SNYDER AVE	105
●	8 100 LENOX ROAD	95
●	9 1488 NEW YORK AVENUE	89
●	10 169 EMPIRE BLVD	79
●	11 815 FLATBUSH AVENUE	76
●	12 1921 CORTELYOU ROAD	76
●	13 1457 FLATBUSH AVENUE	71
●	14 204 LINDEN BOULEVARD	69
●	15 2718 CHURCH AVENUE	69
●	16 88 LINDEN BOULEVARD	66
●	17 581 OCEAN PARKWAY	60
●	18 1039 CONEY ISLAND AVENUE	60
●	19 604 EAST 40 STREET	58
●	20 408 LEFFERTS AVENUE	56
●	21 1620 NEW YORK AVE	54
●	22 2343 NOSTRAND AVENUE	53
●	23 219 LENOX ROAD	50
●	24 25 E 19TH ST	49
●	25 323 LENOX ROAD	47
●	26 45 LENOX ROAD	46
●	27 1462 FLATBUSH AVENUE	45

Units

New Developments

●	28 242 NEWKIRK AVENUE	44
●	29 2239 CHURCH AVENUE	43
●	30 3415 FARRAGUT ROAD	42
●	31 150 LENOX ROAD	42
●	32 154 LENOX ROAD	42
●	33 2913 SNYDER AVE	41
●	34 621 EAST 21 ST	40
●	35 1270 NEW YORK AVE	39
●	36 900 E. 7TH STREET	38
●	37 323 EAST 19 STREET	38
●	38 1930 BEDFORD AVENUE	38
●	39 676 NEW YORK AVE	37
●	40 458 EAST 25 STREET	37
●	41 1538 NEW YORK AVENUE	36
●	42 1644 NEW YORK AVE.	36
●	43 567 OCEAN PARKWAY	35
●	44 1613 BROOKLYN AVE	35
●	45 933 ROGERS AVENUE	32
●	46 937 ROGERS AVENUE	32
●	47 2155 CATON AVENUE	30
●	48 571 OCEAN PKWAY	29
●	49 585 ARGYLE ROAD	29
●	50 195 CLARKSON AV	29
●	51 1127 FLATBUSH AVE	28
●	52 319 LENOX RD	28
●	53 113 ERASMUS STREET	27
●	54 620 PARKSIDE AVENUE	27
●	55 2337 BEDFORD AVENUE	27

Units

MAP KEY

NEW DEVELOPMENTS

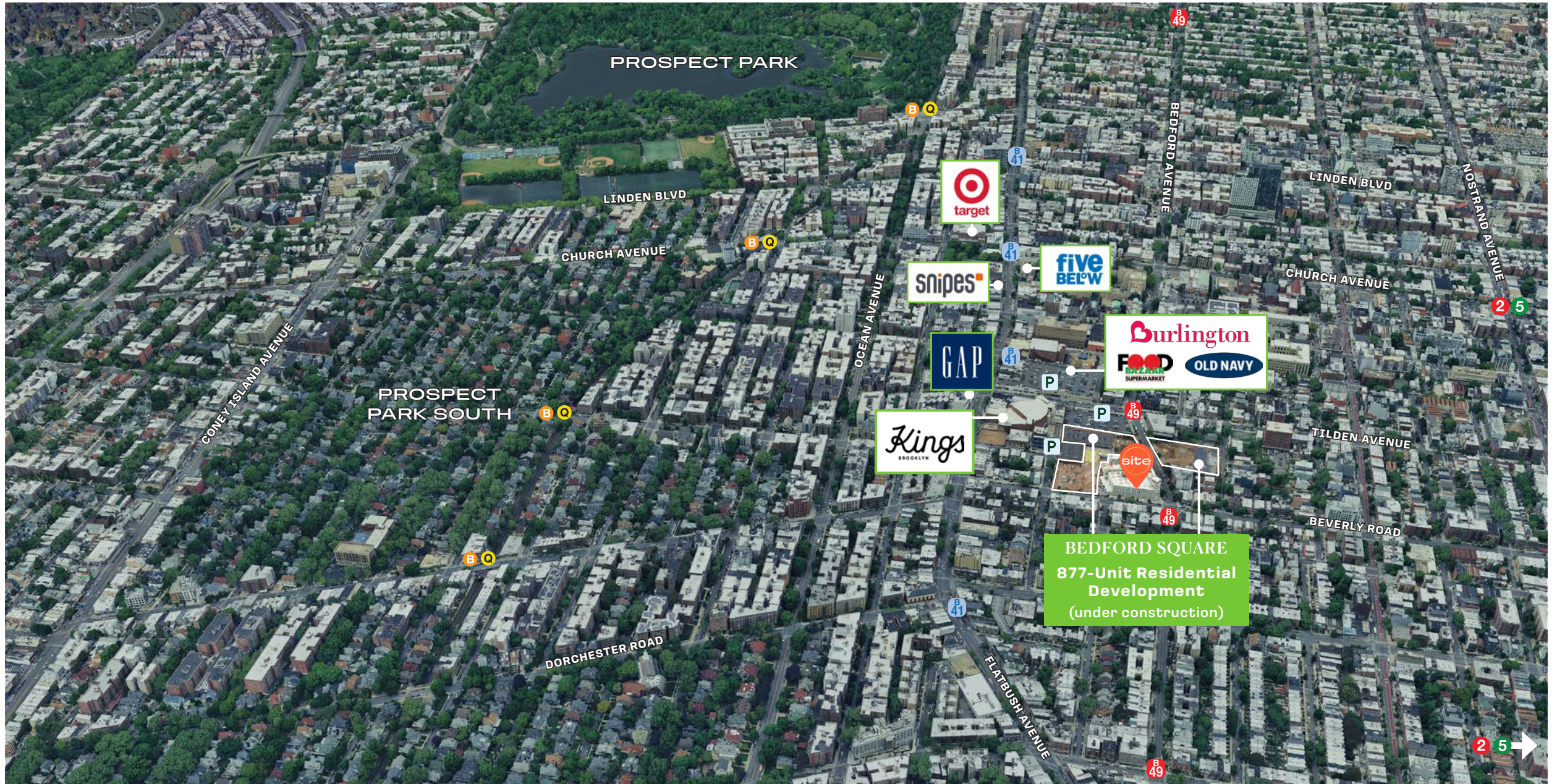
No. Units



The retail spaces at 2360 Bedford Avenue site will sit adjacent to “Bedford Square”- an expansive 877-unit residential development.



Trade Area Market Aerial



Trade Area Market Aerial

THE RETAIL AT
**BEDFORD
SQUARE**

flatbush, brooklyn

Contact Exclusive Agents
At 718.233.6565 Or Email:

Peter Ripka

pripka@ripcony.com

Ben Weiner

bweiner@ripcony.com

Brian Schuster

bschuster@ripcony.com



RIPCO
REAL ESTATE

32 Court Street
10th Floor
Brooklyn, NY 11201
718.233.6565

Please visit us at ripcony.com for more information

This information has been secured from sources we believe to be reliable, but we make no representations as to the accuracy of the information. References to square footage are approximate. Buyer must verify the information and bears all risk for any inaccuracies.

