

RETAIL SPACE

424 WEST BROADWAY

West block between Prince and Spring Streets

SOHO

MANHATTAN | NY

2,967 SF

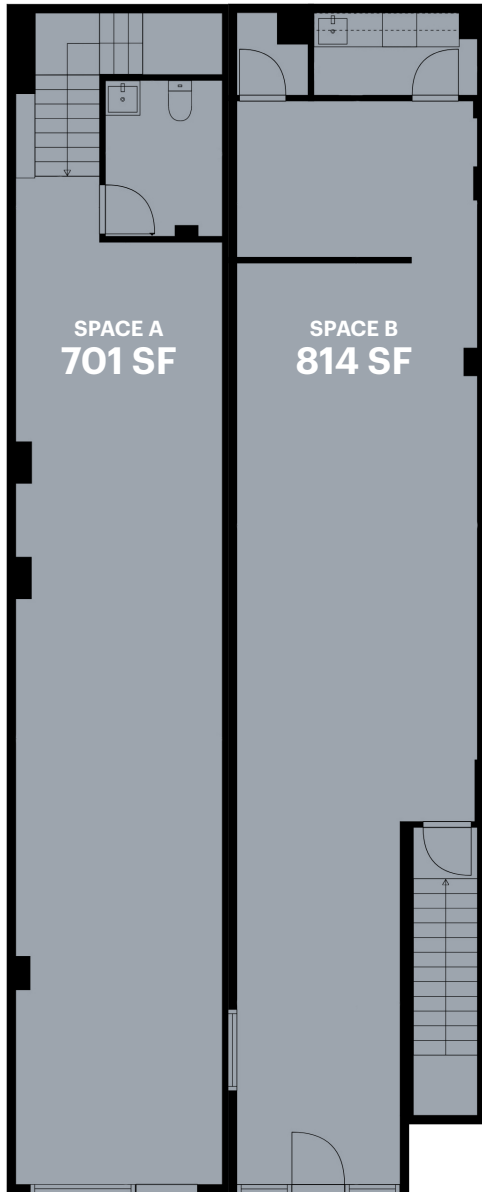
For Lease



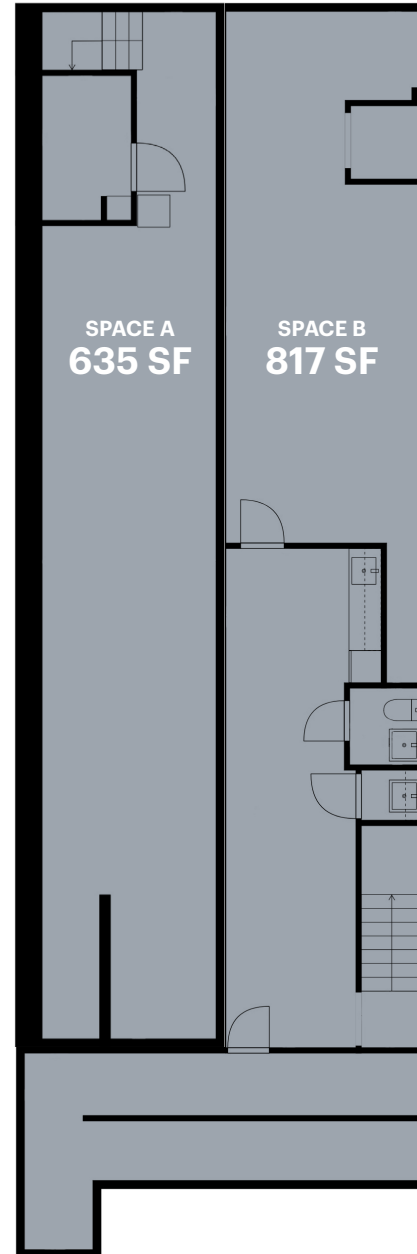
RIPCO
REAL ESTATE

SPACE DETAILS

GROUND FLOOR



BASEMENT



LOCATION

West block between Prince and Spring Streets

SIZE

Space A:
 Ground Floor 701 SF
 Basement 635 SF
 Total 1,336 SF

Space B:
 Ground Floor 814 SF
 Basement 817 SF
 Total 1,631 SF

TOTAL FRONTAGE

West Broadway 20 FT

STATUS

Space A: Currently Avitto Shoes

Space B: Currently Gürdal Bibo Fine Art

TERM

Long term

RENT

Upon request

POSSESSION

Arranged

NEIGHBORS

Aesop, Anthropologie, Chobani, Coach, The Ordinary, Reiss, REVO, Gucci, RRL Men's, Jonathan Adler, and The Westside Shop
 Coming soon: Salomon and Varley

COMMENTS

Turnkey SoHo retail opportunity located on the highest-trafficked block of West Broadway

Each space includes landmark approved blade sign visibility

Includes contiguous basement space

Most uses considered

Spaces can be combined

TRANSPORTATION

2023 Ridership Report

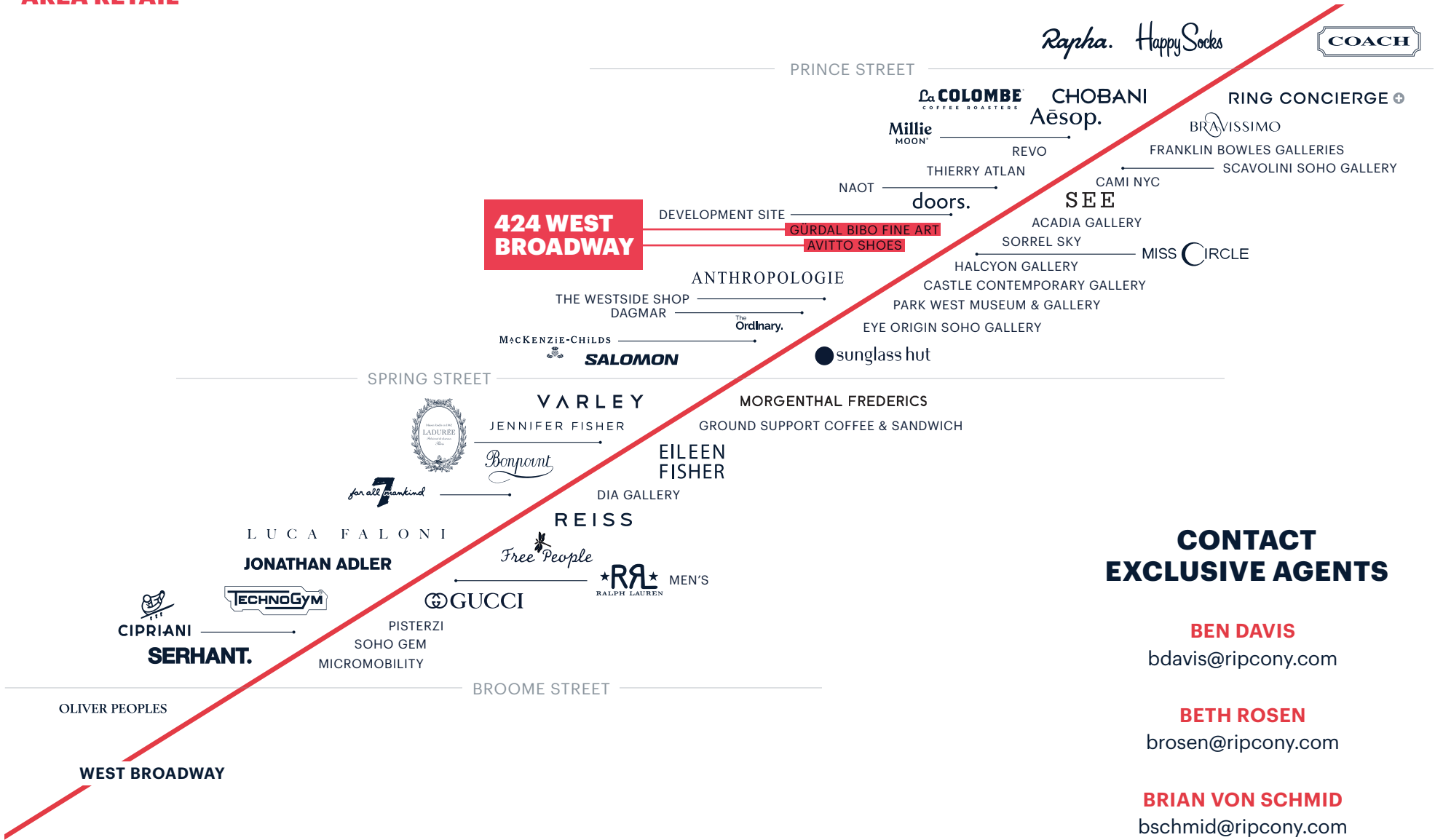
Prince Street R W
 Annual 3,128,710
 Weekday 8,363
 Weekend 18,482

Spring Street G E
 Annual 2,941,927
 Weekday 9,575
 Weekend 9,434

20 FT

WEST BROADWAY

AREA RETAIL



CONTACT EXCLUSIVE AGENTS

BEN DAVIS

bdavis@ripcony.com

BETH ROSEN

brosen@ripcony.com

BRIAN VON SCHMID

bschmid@ripcony.com

212.750.6565

+ Coming Soon

RIPCO
REAL ESTATE

150 East 58th Street
15th Floor
New York, NY 10115
212.750.6565

Please visit us at ripcony.com for more information

This information has been secured from sources we believe to be reliable, but we make no representations as to the accuracy of the information. References to square footage are approximate. Buyer must verify the information and bears all risk for any inaccuracies.