

RETAIL SPACE

343 BLEECKER STREET

Between Christopher and West 10th Street

WEST VILLAGE
MANHATTAN | NY

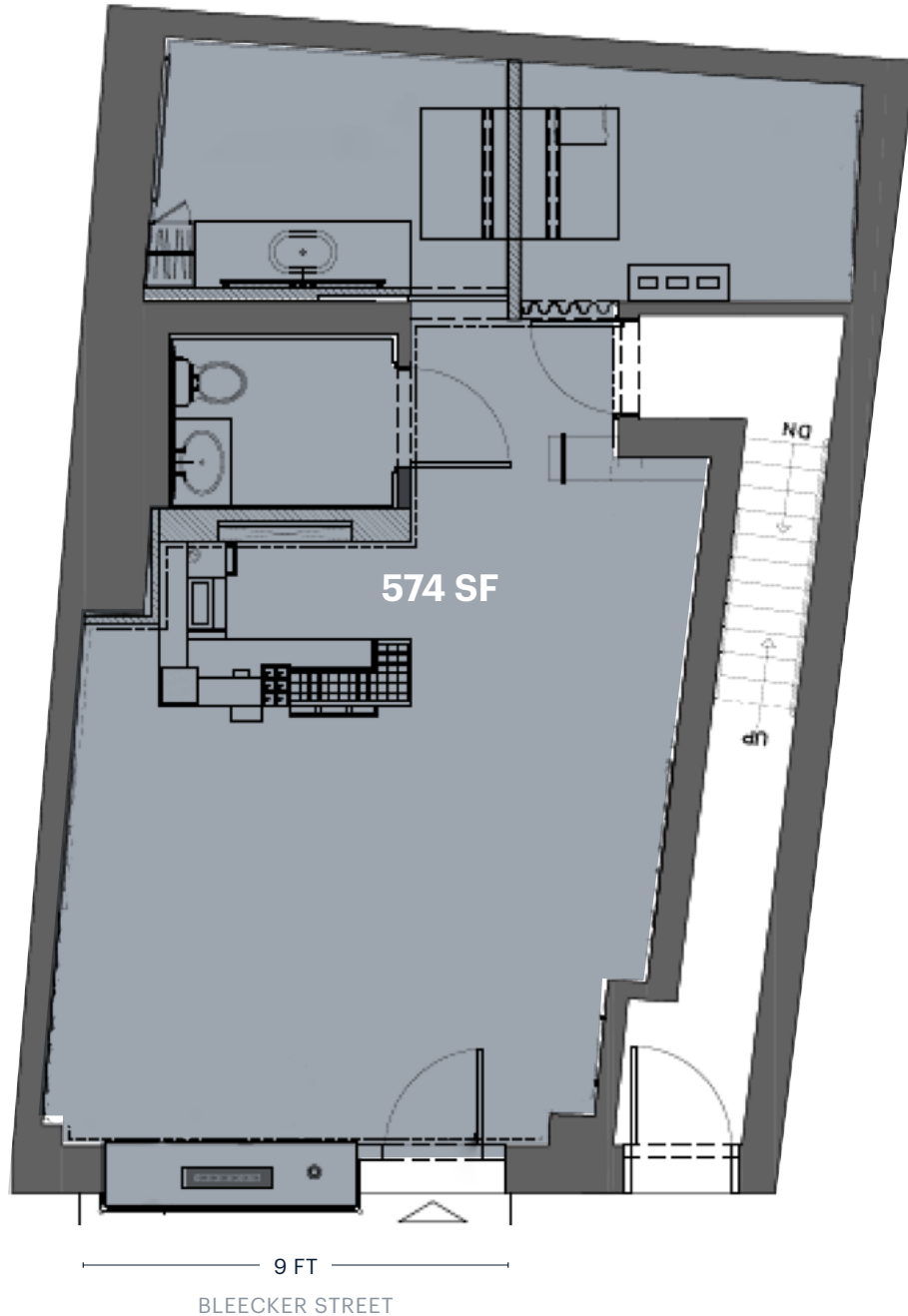
574 SF

For Lease



SPACE DETAILS

GROUND FLOOR



LOCATION

Between Christopher
and West 10th Street

SIZE

Ground Floor	574 SF
Basement	500 SF

FRONTAGE

Bleecker Street	9 FT
-----------------	------

STATUS

Formerly Sisley

POSSESSION

Immediate

RENT

Upon request

NEIGHBORS

Cubbits, Buck Mason, Aesop,
ASTR, Bandit, Wyld Blue

COMMENTS

Boutique retail space on
Bleecker Street with strong
co-tenancy

TRANSPORTATION

2023 Ridership Report

Christopher Street	1
Annual	2,817,379
Weekday	7,965
Weekend	14,665

