

RETAIL SPACE

717 MANHATTAN AVENUE

Between Norman and Meserole Avenues

GREENPOINT

BROOKLYN | NY

4,000 SF

For Lease

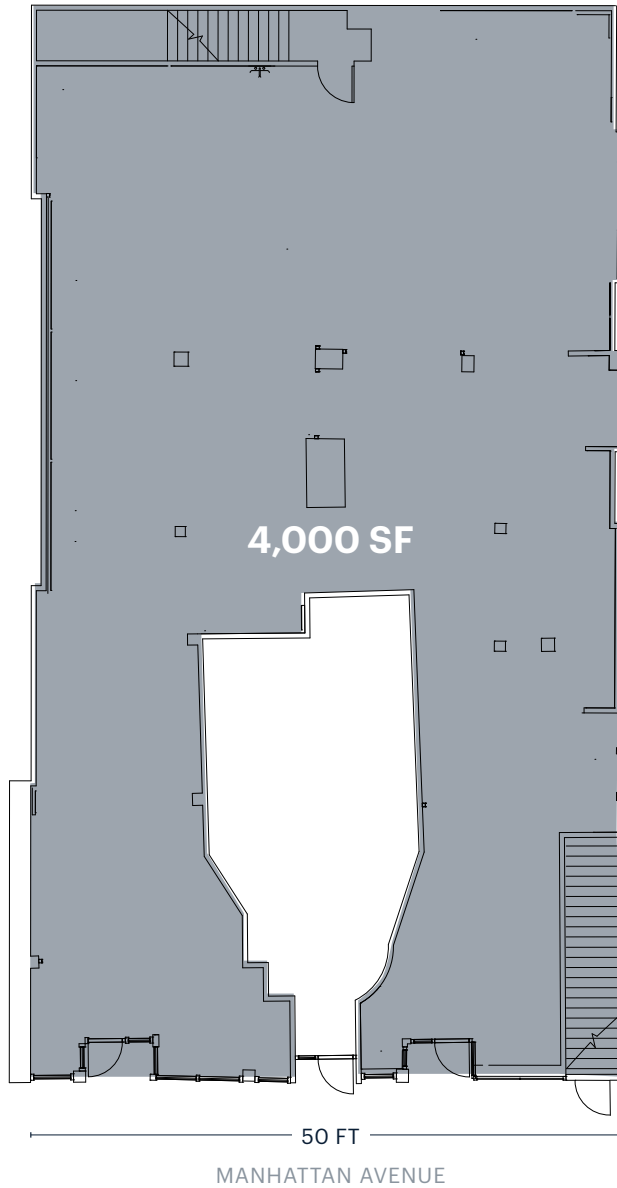


RIPCO
REAL ESTATE

Inline
Realty

SPACE DETAILS

GROUND FLOOR



LOCATION

Between Norman and Meserole Avenues

SIZE

Ground Floor 4,000 SF

FRONTAGE

Manhattan Avenue 50 FT

STATUS

Formerly Santander Bank

RENT

Upon request

POSSESSION

Immediate

NEIGHBORS

Sweetgreen, Peter Pan Donuts, MNS Minimart, Walgreens, Mattress Firm, Frankels, Upside Pizza, and Bagel Point

COMMENTS

Clean former bank space for lease
New HVAC in good and working order
Strong immediate cotenancy
New glass storefront

TRANSPORTATION

2023 Ridership Report

Nassau Avenue



Annual 2,320,186
Weekday 6,888
Weekend 10,524

Norman Avenue



Annual 1,583,405
Weekday 4,744
Weekend 6,942

Norman Avenue



Annual 1,718,047
Weekday 5,439
Weekend 6,208

AREA RETAIL



717 MANHATTAN AVENUE

CONTACT EXCLUSIVE AGENTS

BEN WEINER
 bweiner@ripcony.com
 718.233.6565

DAVID ALANI
 Inline Realty
 david@ilrny.com
 718.482.9800 x2



32 Court Street
 10th Floor
 Brooklyn, NY 11201
 718,233.6565

Please visit us at ripcony.com for more information

This information has been secured from sources we believe to be reliable, but we make no representations as to the accuracy of the information. References to square footage are approximate. Buyer must verify the information and bears all risk for any inaccuracies.

