



# LAKE SUCCESS, NY

## LAKE SUCCESS SHOPPING CENTER

A series of recent corporate bankruptcies have created opportunities for leading retailers to join Lake Success Shopping Center, which has had a historic occupancy rate between 95% and 100%.

### AVAILABLE SPACES

- 1,820 SF (Currently Bam Salon)
- 3,885 SF (Formerly Stride Rite)
- 797 SF + 7,205 SF Basement (Portion of Former Modell's)
- 6,734 SF (Currently Periwinkle Boutique)
- 6,250 SF (Formerly Express)
- 7,750 SF (Formerly Pier 1 Imports) - LEASE PENDING

### MAJOR CO-TENANTS

Target, Macy's Backstage, Burlington, Shake Shack, Sephora, Victoria's Secret, Iavarone Bros, Foot Locker, The Paper Store

### COMMENTS

Lake Success Shopping Center is considered to be among the busiest and most successful shopping centers in all of New York.

Ideally situated at the western edge of the north shore of Nassau County, one block east of the Queens border. The trade area includes a combination of incredible density, high income population and the highest concentration of office/medical space anywhere Long Island.



## CONTACT EXCLUSIVE AGENT

**BRIAN SCHUSTER**

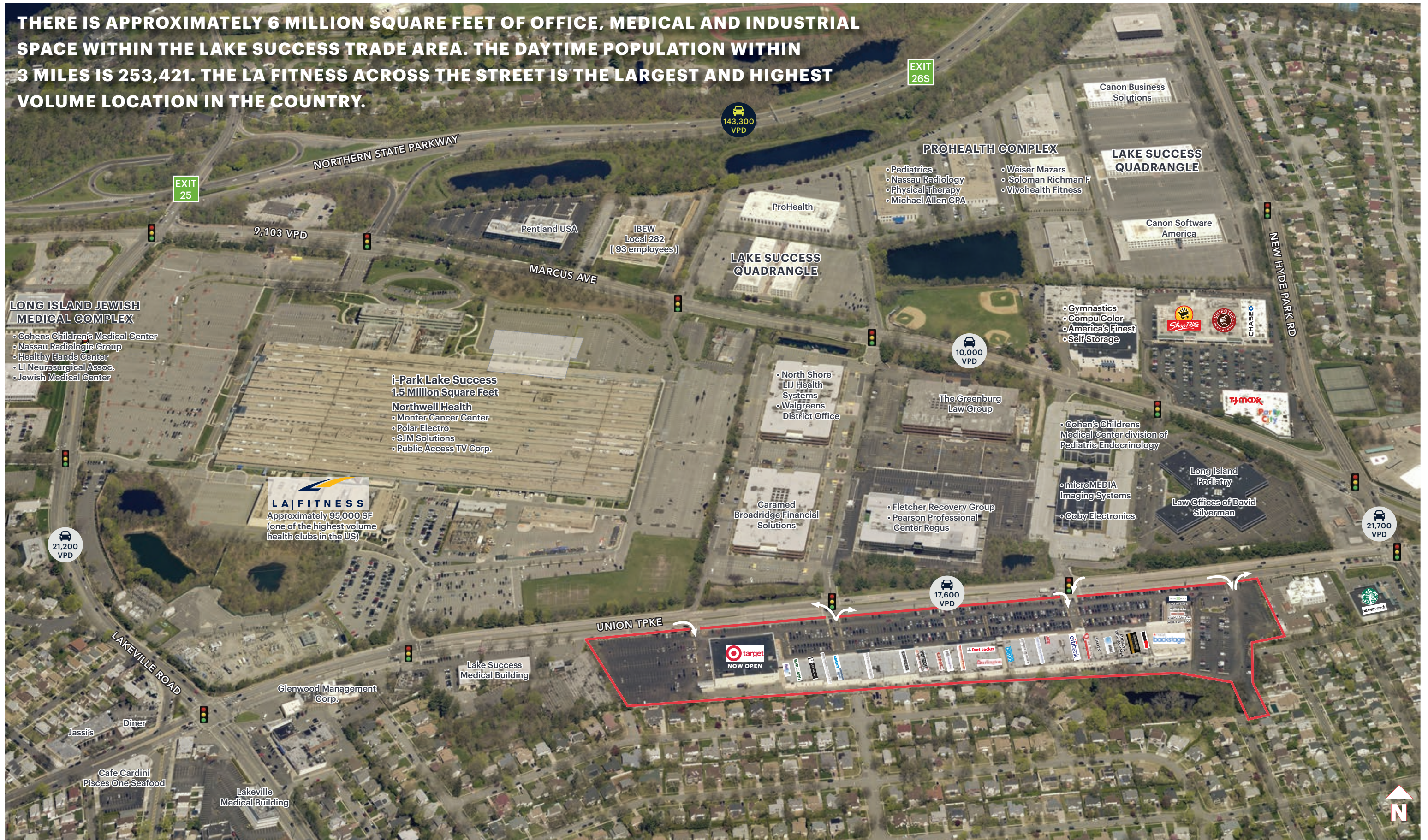
bschuster@ripcony.com

516.933.8880

# MARKET AERIAL



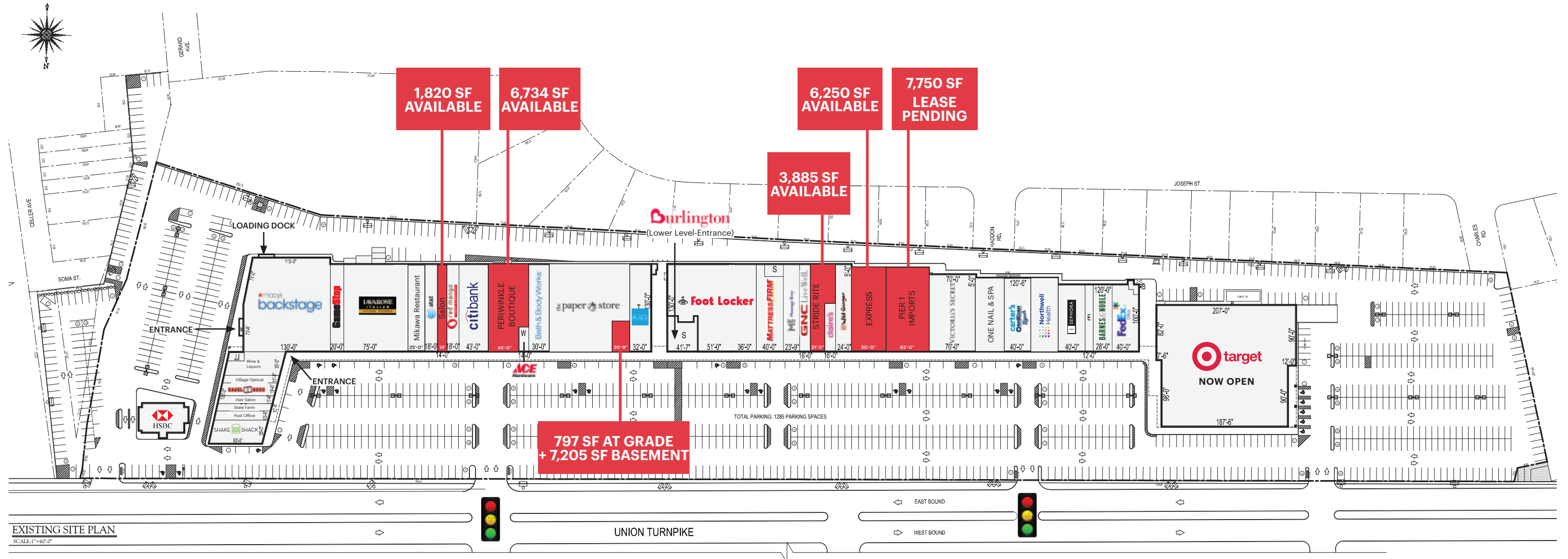
**THERE IS APPROXIMATELY 6 MILLION SQUARE FEET OF OFFICE, MEDICAL AND INDUSTRIAL SPACE WITHIN THE LAKE SUCCESS TRADE AREA. THE DAYTIME POPULATION WITHIN 3 MILES IS 253,421. THE LA FITNESS ACROSS THE STREET IS THE LARGEST AND HIGHEST VOLUME LOCATION IN THE COUNTRY.**



**OBLIQUE AERIAL**



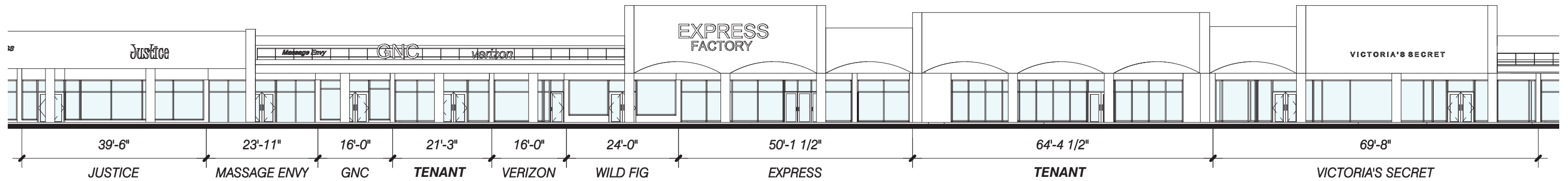
# SITE PLAN



## OVERALL PLAZA ELEVATION 2



## PROPOSED ELEVATION



## EXISTING ELEVATION

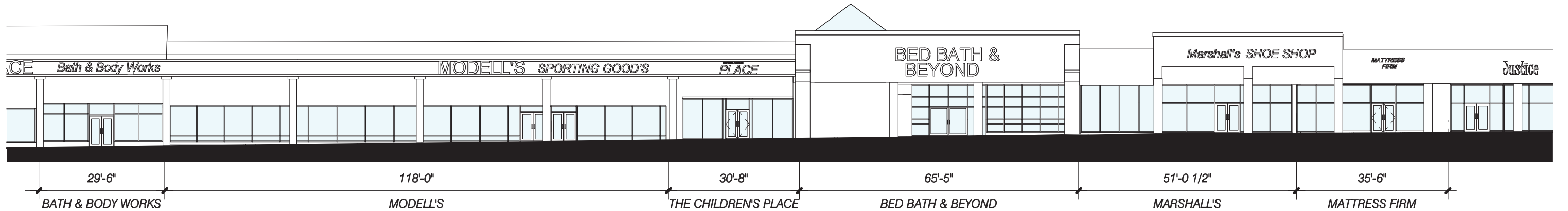
**OVERALL PLAZA VIEW 2**



# OVERALL PLAZA ELEVATION 3



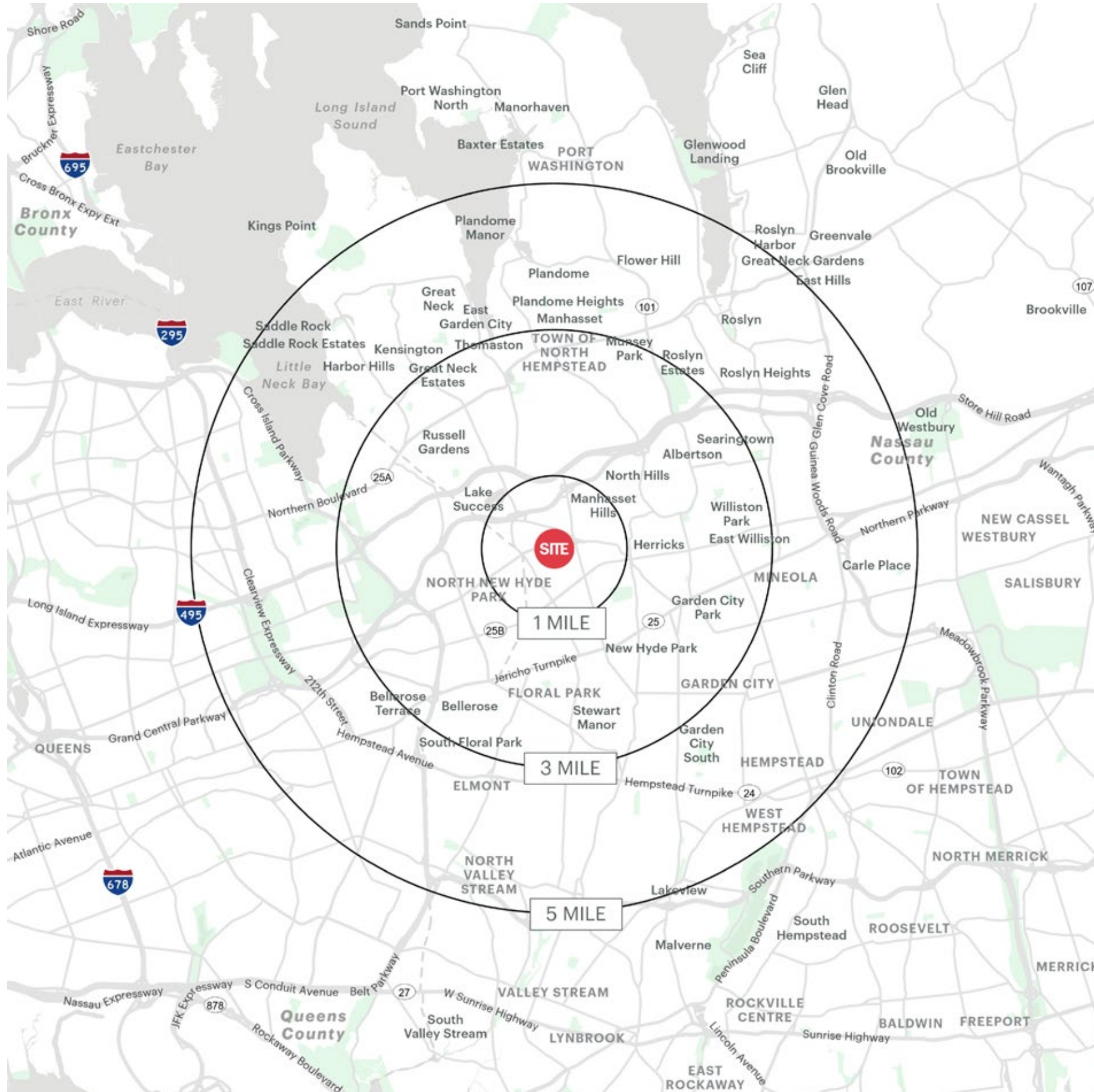
## PROPOSED ELEVATION



## EXISTING ELEVATION



# AREA DEMOGRAPHICS



## 1 MILE RADIUS

### POPULATION

20,147

### HOUSEHOLDS

6,349

### AVERAGE HOUSEHOLD INCOME

\$193,686

### MEDIAN HOUSEHOLD INCOME

\$150,097

### COLLEGE GRADUATES (Bachelor's +)

8,739 - 58.0%

### TOTAL BUSINESSES

1,321

### TOTAL EMPLOYEES

37,777

### DAYTIME POPULATION (w/ 16 yr +)

48,759

## 3 MILE RADIUS

### POPULATION

219,256

### HOUSEHOLDS

76,392

### AVERAGE HOUSEHOLD INCOME

\$173,057

### MEDIAN HOUSEHOLD INCOME

\$124,014

### COLLEGE GRADUATES (Bachelor's +)

86,888 - 54.0%

### TOTAL BUSINESSES

9,956

### TOTAL EMPLOYEES

133,350

### DAYTIME POPULATION (w/ 16 yr +)

253,421

## 5 MILE RADIUS

### POPULATION

623,467

### HOUSEHOLDS

210,136

### AVERAGE HOUSEHOLD INCOME

\$160,494

### MEDIAN HOUSEHOLD INCOME

\$113,435

### COLLEGE GRADUATES (Bachelor's +)

215,383 - 47.0%

### TOTAL BUSINESSES

24,630

### TOTAL EMPLOYEES

284,695

### DAYTIME POPULATION (w/ 16 yr +)

625,922

# AREA DEMOGRAPHICS

