

NON-VENTED RESTAURANT SPACE

170 AMSTERDAM AVENUE

At 68th Street and Amsterdam Avenue

UPPER WEST SIDE

MANHATTAN | NEW YORK

1,226 SF

For Lease

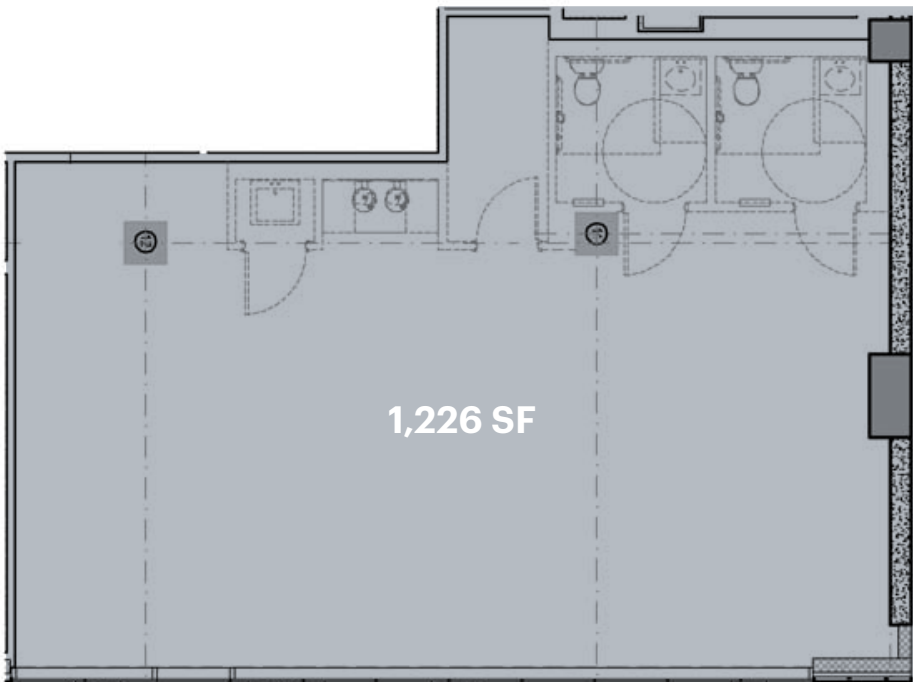


ARTIST'S RENDERING

RIPCO
REAL ESTATE

SPACE DETAILS

GROUND FLOOR



FRONTAGE 43 FT

AMSTERDAM AVENUE

LOCATION

At 68th Street and Amsterdam Avenue

SIZE

Ground Floor 1,226 SF

FRONTAGE

Amsterdam Avenue 43 FT

CEILING HEIGHTS

Ground Floor 9 FT

STATUS

Currently Le Petit Parisien

TERM

Long term

RENT

Upon request

NEIGHBORS

Apple, AMC Theaters, Gourmet Garage, NYU Langone Health, NYC Department of Education, Starbucks, Zara, Pottery Barn

COMMENTS

170 Amsterdam Apartments is a stunning, 20-story, luxury community on the Upper West Side

Adjacent to lobby of residential building

Central location close to Lincoln Center, Carnegie Hall, and Metropolitan Museum of Art

ADA bathroom in place

Second generation F&B space

Close proximity to 72nd Street 1,2,3 Subway Station

TRANSPORTATION

2022 Ridership Report

72nd Street	1 2 3
Annual	7,791,430
Weekday	23,228
Weekend	34,748

66th Street - Lincoln Center	1
Annual	4,015,455
Weekday	12,561
Weekend	15,136

AREA RETAIL



CONTACT EXCLUSIVE AGENTS

ANDREW MANDELL

amandell@ripcony.com | 212.750.0705

SAM MARTORELLA

smartorella@ripcony.com | 212.230.5882

RIPCO
REAL ESTATE

150 East 58th Street
15th Floor
New York, NY 10115
212.750.6565

Please visit us at ripcony.com for more information

This information has been secured from sources we believe to be reliable, but we make no representations as to the accuracy of the information. References to square footage are approximate. Buyer must verify the information and bears all risk for any inaccuracies.