

**FITNESS/MEDICAL/OFFICE/STREET RETAIL**

# 5030 BROADWAY

Between 213th and 214th Streets

**INWOOD**

MANHATTAN | NY

**7,972 SF**

For Lease

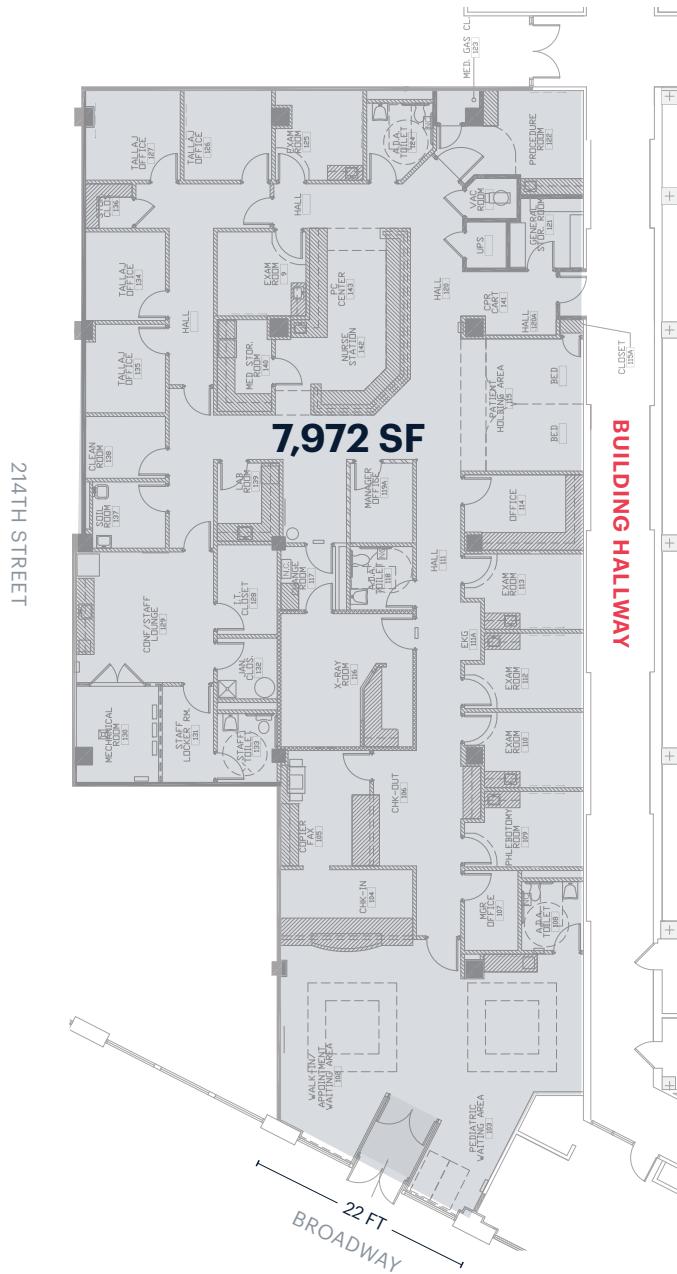


**RIPCO**  
REAL ESTATE



# SPACE DETAILS

## GROUND FLOOR



### LOCATION

North east side of Broadway  
between 213th and 214th Streets

### SIZE

Ground Floor 7,972 SF

### FRONTAGE

Broadway 22 FT

### CEILING HEIGHTS

Ground Floor 10-12 FT

### STATUS

Currently Mount Sinai Urgent  
and Primary Care

### POSSESSION

Immediate

### RENT

Upon request

### TERM

Through 10/31/2029  
(direct extension possible)

### NEIGHBORS

CUNY, DII, TD Bank, Apple Bank,  
Dunkin, Buunni Coffee, CHO Cnyc  
Pastries, Brown Sugar, Lffy,  
Le Beaute Studio, and Isham Park,

### COMMENTS

Fully built medical space  
Reception, check out area,  
12 exam rooms, and X-ray room  
Staff area with lockers and  
dedicated restroom  
Three patient restrooms  
Nurses station and storage space  
Direct extension possible

### TRANSPORTATION

2022 Ridership Report

#### 215th Street

Annual	403,240	<b>1</b>
Weekday	1,275	
Weekend	1,463	

#### Inwood Street

Annual	1,484,846	<b>A</b>
Weekday	4,760	
Weekend	5,024	

#### BX7 / BX20

Annual	2,708,355	<b>BX 7 BX 20</b>
Weekday	8,499	
Weekend	10,020	



## EXTERIOR PHOTO

### SPACE HIGHLIGHTS

- Retail space situated within a vast building spanning the length of an entire city block
- Easy access to public transportation "1", "A" subways and BX7, BX20 buses
- Fully-built medical space



OVER 31,000 VEHICLES PER DAY ALONG BUSTLING BROADWAY



## INTERIOR PHOTOS





## ADDITIONAL INTERIOR PHOTOS





## AREA RETAIL



### AREA DEMOGRAPHICS (1/4 MILES FROM SITE)

ESTIMATED TOTAL POPULATION  
**10,019**

ESTIMATED DAYTIME POPULATION  
**7,495**

AVERAGE HOUSEHOLD INCOME  
**\$107,994**

TOTAL CONSUMER SPENDING-  
**\$126,749,601**

### CONTACT EXCLUSIVE AGENTS

#### JASON PENNINGTON

jpennington@ripcony.com  
212.750.6565

#### JESSICA HEDRINGTON

jhedrington@ripcony.com  
212.750.6565

#### ALEX BEARD

abeard@ripcony.com  
718.233.6565

**RIPCO**  
REAL ESTATE

150 East 58th Street  
15th Floor  
New York, NY 10155  
212.750.6565

Please visit us at [ripcony.com](http://ripcony.com) for more information

This information has been secured from sources we believe to be reliable, but we make no representations as to the accuracy of the information. References to square footage are approximate. Buyer must verify the information and bears all risk for any inaccuracies.