

Artist's Rendering

# 121 W 125<sup>TH</sup> STREET

CENTRAL HARLEM, NYC

Join Big-Box Co-Tenants –  
Target, Trader Joes,  
Sephora and Pandora

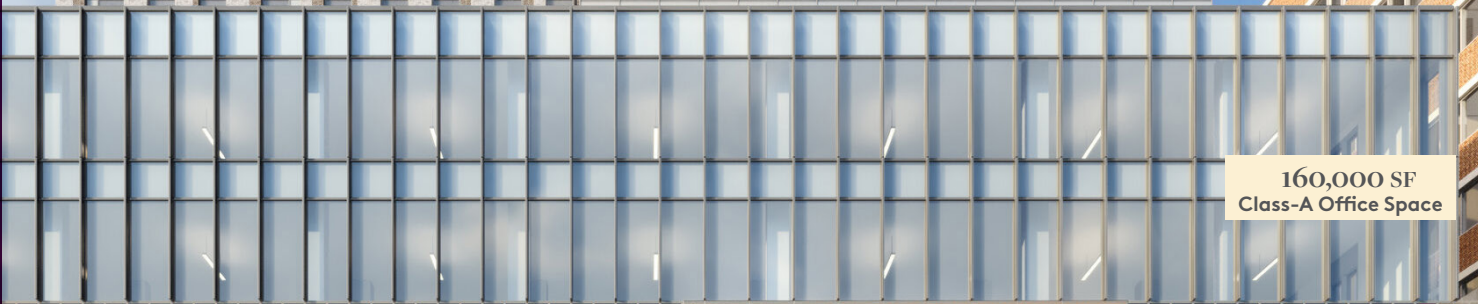
- ALSO -

Home to New York's First and  
Only Civil Rights Museum

LAST RETAIL SPACE AVAILABLE!



170 Units



160,000 SF  
Class-A Office Space



TRADER JOE'S

target

Office Tenants  
Entrance



National  
Urban League

H&M

target

TRADER JOE'S

SIGNAGE

40 FT Frontage

PANDORA

SEPHORA

121

125TH STREET



# Prime Harlem Retail Opportunity

121 West 125th Street, located between Malcolm X and Adam Clayton Powell is in the heart of Harlem, New York City. This mixed-use development which spans 414,000 SF of city-block, is set to provide 170 affordable housing units, 160,000 SF of high-quality office space, and 110,000 SF of retail space. This includes **TARGET**, **TRADER JOE'S**, **SEPHORA**, and **PANDORA**. It is also the new headquarters for the **National Urban League** and the **Civil Rights Museum Experience**.

Surrounded by iconic landmarks such as the Apollo Theater, and the Studio Museum in Harlem, this location provides high foot and vehicle traffic count. Convenient 2, 3 subway stations at the 125th Street station, and A, C, B, and D trains to the west along St. Nicholas Avenue, adds valuable accessibility to this site, drawing shoppers and visitors from near and far.

## SPACE HIGHLIGHTS

FRONTAGE

40 FT



CEILINGS

14 FT

SIZE

4,506 SF

# The Space

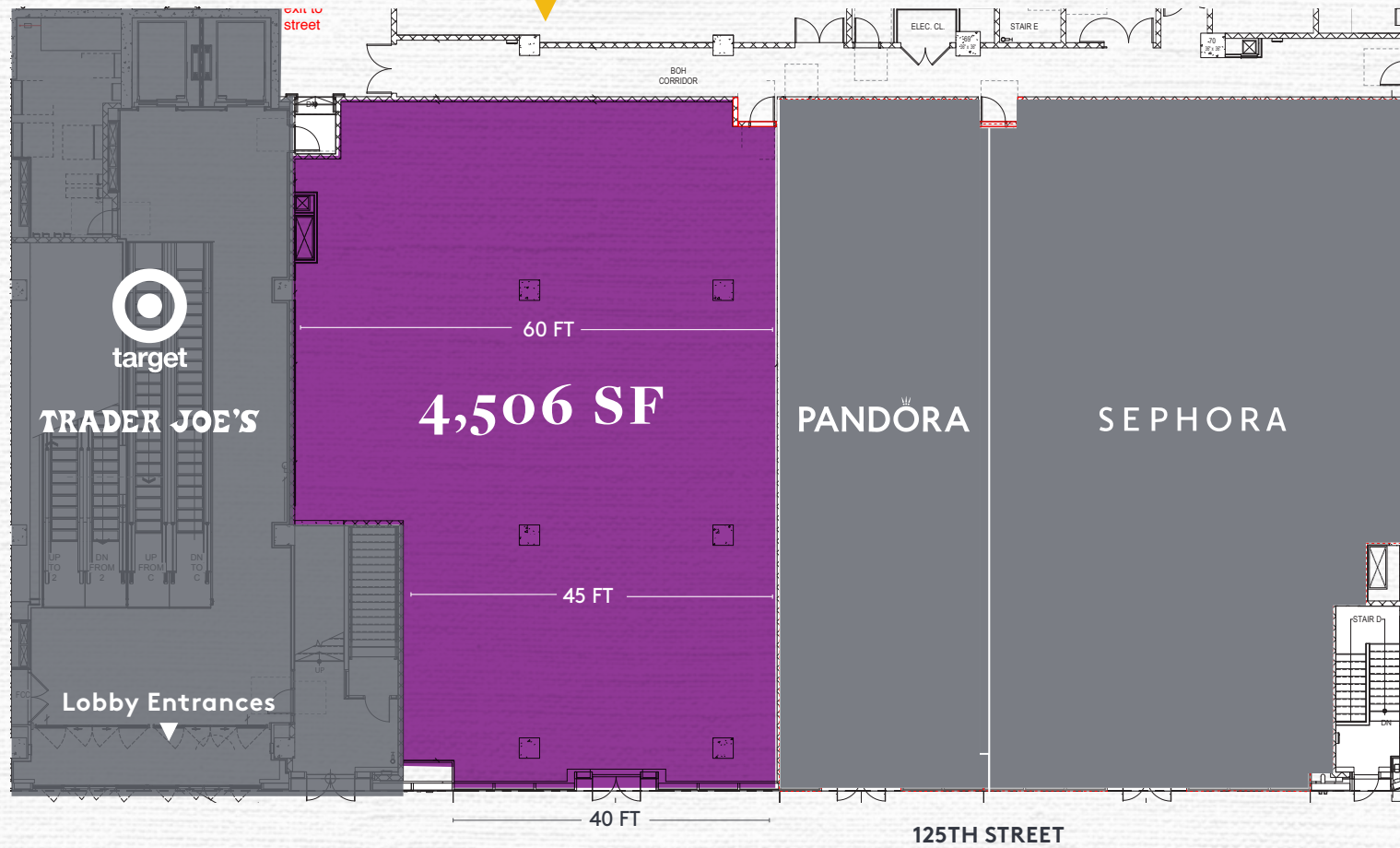


*Artist's Rendering*

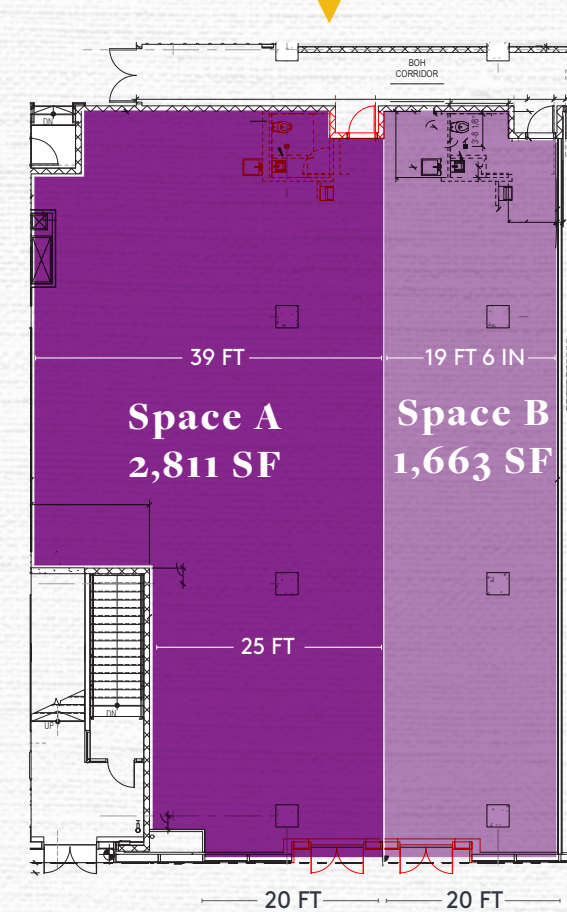
**High Street-Visibility Along Bustling 125th Street Retail Corridor**

# Floor Plans

## Ground Floor Plan



## Division Plan



## Space Details

Size **4,506 SF**  
Ceilings **14 FT**

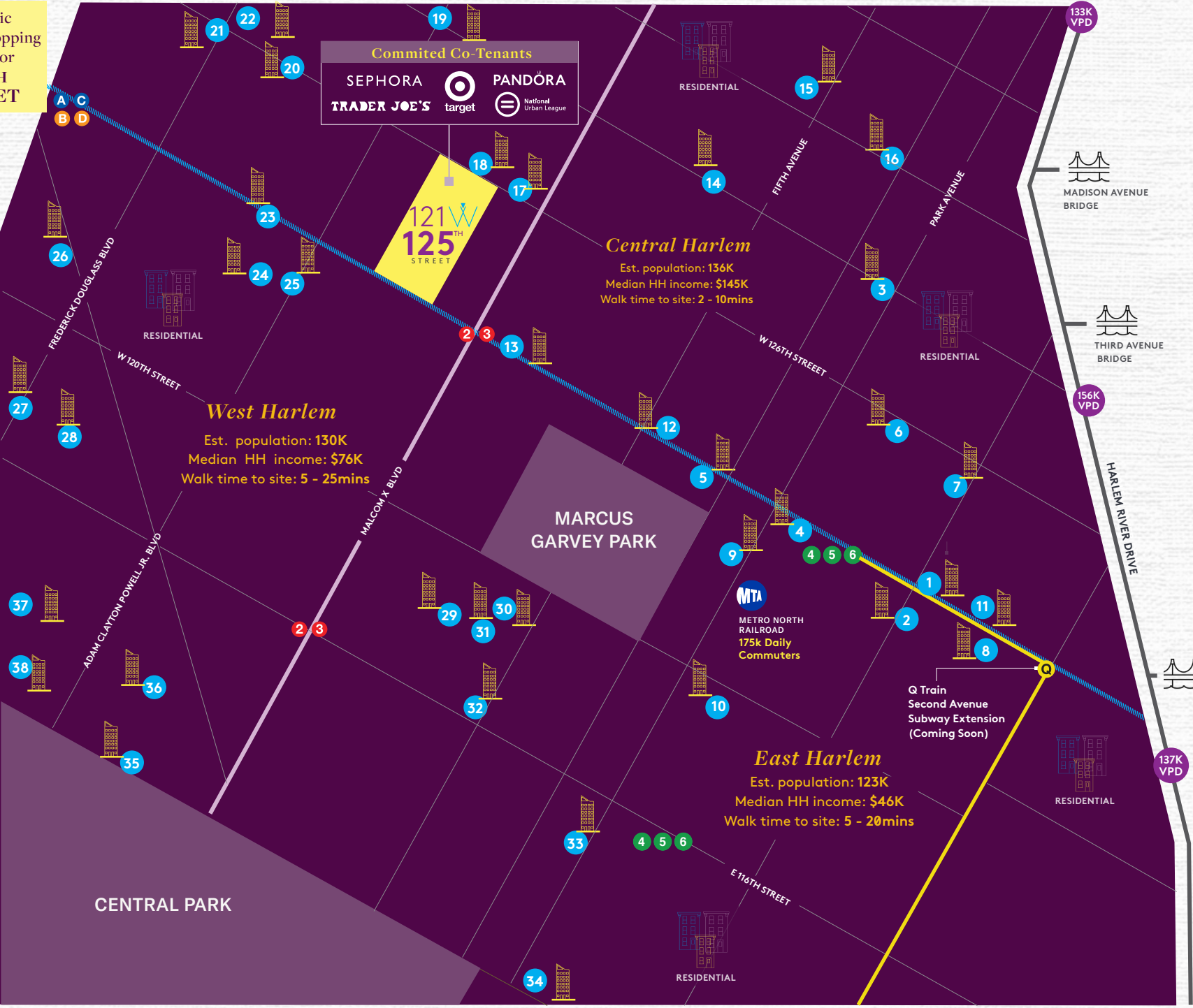
Frontage **40 FT**  
Currently **Vacant**

Possession **Immediate**  
Rent **Upon request**



Historic Strip + Shopping Corridor  
125TH STREET

8 min drive from Henry Hudson Pkwy to Site



**Committed Co-Tenants**  
SEPHORA  
TRADER JOE'S  
target  
PANDORA  
National Urban League

**121 W  
125th  
STREET**

**Central Harlem**  
Est. population: 136K  
Median HH income: \$145K  
Walk time to site: 2 - 10mins

**West Harlem**  
Est. population: 130K  
Median HH income: \$76K  
Walk time to site: 5 - 25mins

**MARCUS GARVEY PARK**

**East Harlem**  
Est. population: 123K  
Median HH income: \$46K  
Walk time to site: 5 - 20mins

**CENTRAL PARK**

# Area Pipeline\* + Demographics Map

1	201 East 125th Street	400 UNITS	20	267 West 126 Street	37 UNITS
2	180 East 125th Street	9-STORY OFFICE TOWER	21	2371 Eight Avenue	30 UNITS
3	82 East 127th Street	101 UNITS	22	310 West 127 Street	117 UNITS
4	132 East 125th Street	100,000 SF OFFICE BLDG	23	233 West 125th Street	191 UNITS
5	58-62 East 125th Street	25-STORY HOTEL	24	224 West 124th Street	168 UNITS
6	148 East 126th Street	233 UNITS	25	212 West 124th Street	169 UNITS
7	175 East 125th Street	233 UNITS	26	300 West 122nd Street	170 UNITS
8	212 East 125th Street	13 UNITS	27	2171 Fredrick Douglass Blvd	14 UNITS
9	1800 Park Avenue	673 UNITS	28	251 West 117th Street	104 UNITS
10	104 East 120th Street	57 UNITS	29	15 West 118th Street	51 UNITS
11	213 East 125th Street	80 UNITS	30	15 West 119th Street	16 UNITS
12	2033 Fifth Avenue	222 UNITS	31	11 West 118th Street	136 UNITS
13	56 West 125th Street	141 UNITS	32	11 West 116th Street	31 UNITS
14	26 West 127th Street	12 UNITS	33	109 East 115th Street	32 UNITS
15	3 West 128th Street	20 UNITS	34	50 East 112th Street	348 UNITS
16	2015 Madison Avenue	39 UNITS	35	145 Central Park North	37 UNITS
17	126 West 126th Street	171 UNITS	36	127 West 112 Street	25 UNITS
18	181 West 126th Street	22 UNITS	37	310 West 113th Street	14 UNITS
19	2139 Seventh Avenue	60 UNITS	38	2040 Fredrick Douglass Blvd	49 UNITS

\* Select Area Developments

6 min drive from FDR to Site

# 121 125<sup>TH</sup> STREET

Central Harlem, NYC



**LAST RETAIL  
SPACE  
AVAILABLE!**

CONTACT EXCLUSIVE AGENTS AT 212.750.6565 OR EMAIL:

**Ben Weiner**

[bweiner@ripcony.com](mailto:bweiner@ripcony.com)

**Jason Pennington**

[jpennington@ripcony.com](mailto:jpennington@ripcony.com)

**RIPCO**  
REAL ESTATE

150 East 58th Street  
15th Floor  
New York, NY 10155  
212.750.6565

Please visit us at [ripcony.com](http://ripcony.com) for more information.

This information has been secured from sources we believe to be reliable, but we make no representations as to the accuracy of the information. References to square footage are approximate. Buyer must verify the information and bears all risk for any inaccuracies.

**TACONIC**  
PARTNERS

