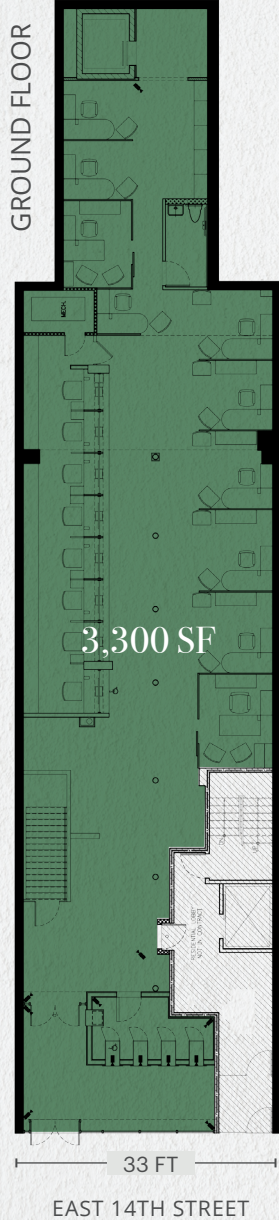


10 East 14th Street

UNION SQUARE, NYC



FLOOR PLANS



NEIGHBORHOOD

Union Square

LOCATION

South block between Fifth Avenue and Union Square West

SIZE

Ground Floor: 3,300 SF

Lower Level: 3,300 SF

FRONTAGE

33 FT on East 14th Street

CEILING HEIGHTS

Ground Floor: 17 FT

Lower Level: 11 FT

STATUS

Currently Amalgamated Bank

POSSESSION

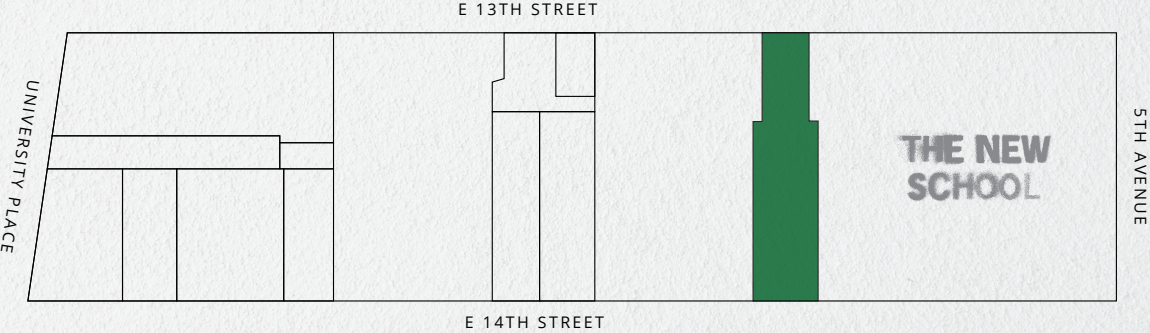
December 2024

COMMENTS

Exclusive elevator within the premises

Great ceiling heights

High traffic block that connects Union Square with Flatiron, Chelsea, East Village, Washington Square Park, and West Village



THE NEIGHBORHOOD

UNION SQUARE



DAYTIME POPULATION

184,088

MEDIAN INCOME

\$157,991

NUMBER OF BUSINESSES

8,554

TOTAL RETAIL EXPENDITURE

\$2.2B

TOTAL HOUSEHOLDS

38,798

TOTAL POPULATION

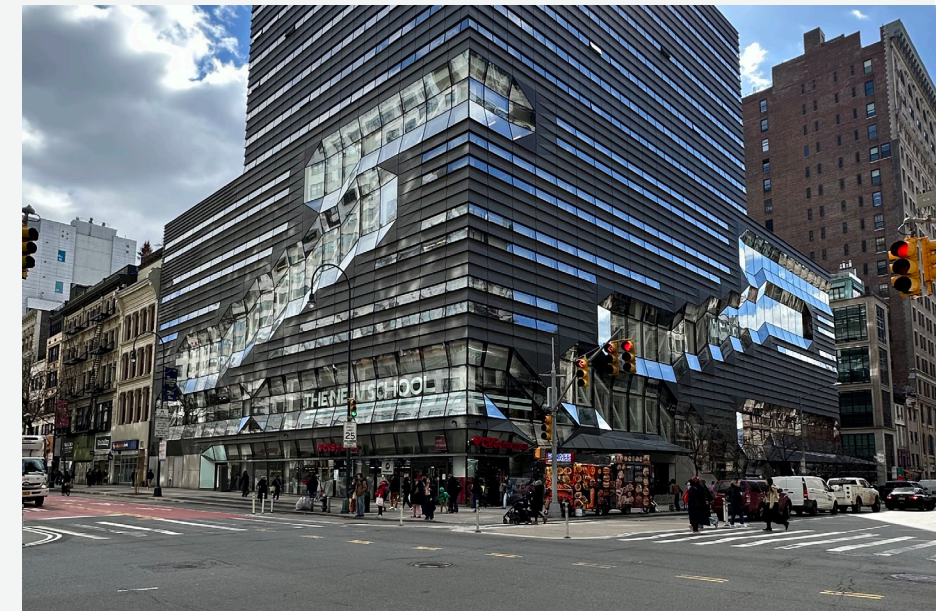
73,738

WITHIN 1/2 MILE FROM SITE

Union Square, a bustling neighborhood located in the heart of Manhattan, New York, is a hub of activity, with a mix of commercial, residential, and cultural spaces.

The neighborhood is known for its vibrant energy and diverse population, with people from all walks of life living and working here. The New School is nearby on the corner of Fifth Avenue, adding an artistic flare to the area. It is home to a variety of shops, restaurants, cafes, and bars, as well as the renowned Union Square Greenmarket farmer's market. Notable retailers in the area include Whole Foods, Sephora, Barnes & Noble, and Target.

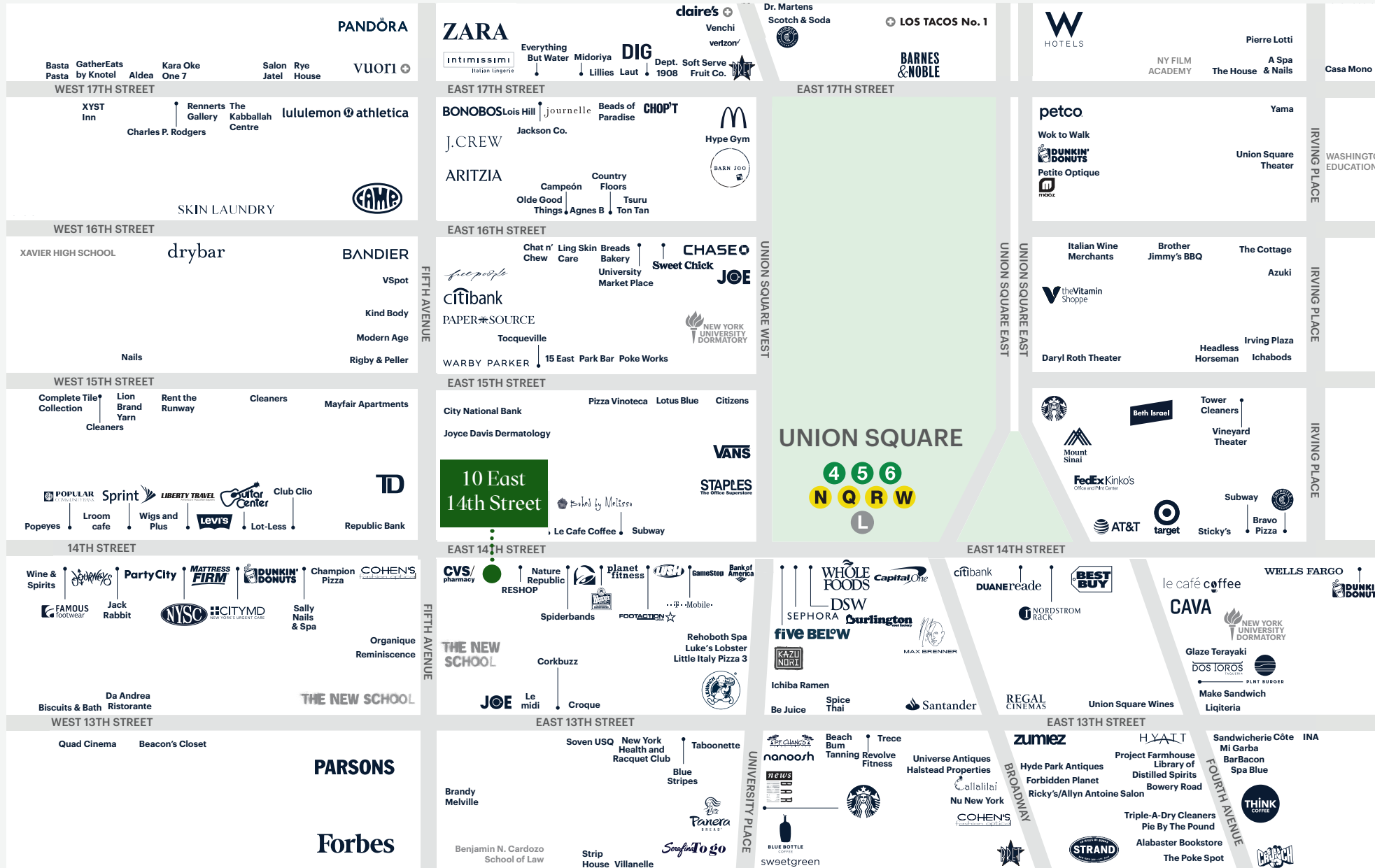
With one of Manhattan's largest subway hubs, access to multiple mass transit lines, dedicated bike path lanes, and pedestrian-friendly thoroughfares, the neighborhood is easily accessible from all points.



PROPERTY PHOTOS



AREA RETAIL MAP



TRANSPORTATION

2022 Ridership Report

14th St - Union Square

L N Q R W 4 5 6

Annual	17,809,631
Weekday	54,140
Weekend	74,877

10 East 14th Street

UNION SQUARE, NYC

CONTACT EXCLUSIVE AGENTS

RICHARD SKULNIK
rskulnik@ripcony.com
212.750.0756

LINDSAY ZEGANS
lzegans@ripcony.com
646.827.9962

BEN SABIN
bsabin@ripcony.com
646.290.2018

MARY SCHWAGERL
mschwagerl@ripcony.com
212.230.5887

RIPCO
REAL ESTATE

150 EAST 58TH STREET, 15TH FLOOR, NEW YORK, NY 10155 | RIPCONY.COM

This information has been secured from sources we believe to be reliable, but we make no representations as to the accuracy of the information. References to square footage are approximate. Lessee must verify the information and bears all risk for any inaccuracies.