

NEW DEVELOPMENT/RESTAURANT-PERMITTED/ STREET RETAIL

661 DRIGGS AVENUE

Between Metropolitan Avenue and Filmore Place

WILLIAMSBURG

BROOKLYN | NEW YORK

1,240 SF

Ground Floor

1,154 SF

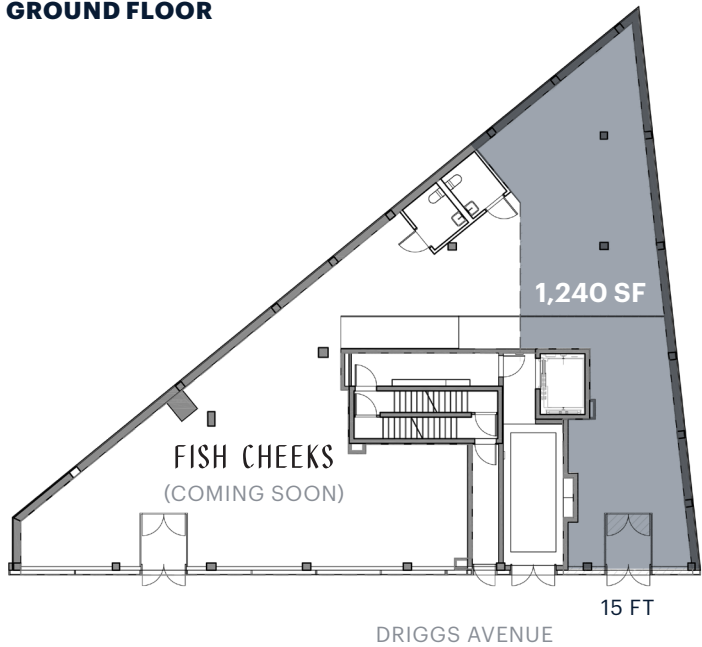
Lower Level

For Lease

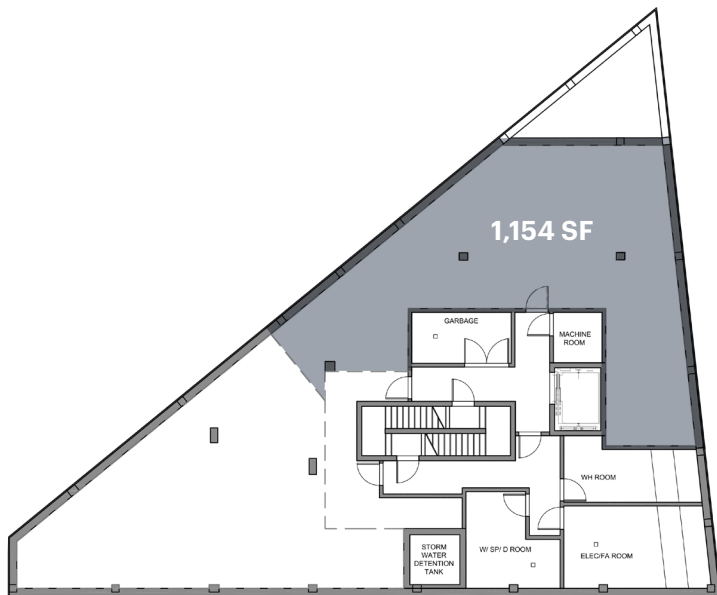


SPACE DETAILS

GROUND FLOOR



LOWER LEVEL



LOCATION

Between Metropolitan Avenue and Filmore Place

SIZE

Ground Floor	1,240 SF
Lower Level	1,154 SF
Total	2,394 SF

FRONTAGE

Driggs Avenue	15 FT
---------------	-------

CEILING HEIGHTS

Ground Floor	16 FT
Lower Level	10 FT

STATUS

New construction

POSSESSION

Immediate

TERM

Negotiable

RENT

Upon request

NEIGHBORS

Fish Cheeks (coming soon), Tacombi, CAVA, The Butcher's Daughter, Westville, Apple, La Bicycleette Bakery, POD Hotel, Sephora, Sweetgreen, DIG, and Levain Bakery

COMMENTS

Ground floor retail space at the base of a new construction building

Located in the heart of Williamsburg with excellent co-tenancy and neighboring retail

All uses considered

TRANSPORTATION

2022 Ridership Report

Marcy Avenue

Annual	2,540,327	J M Z
Weekday	7,896	
Weekend	9,774	

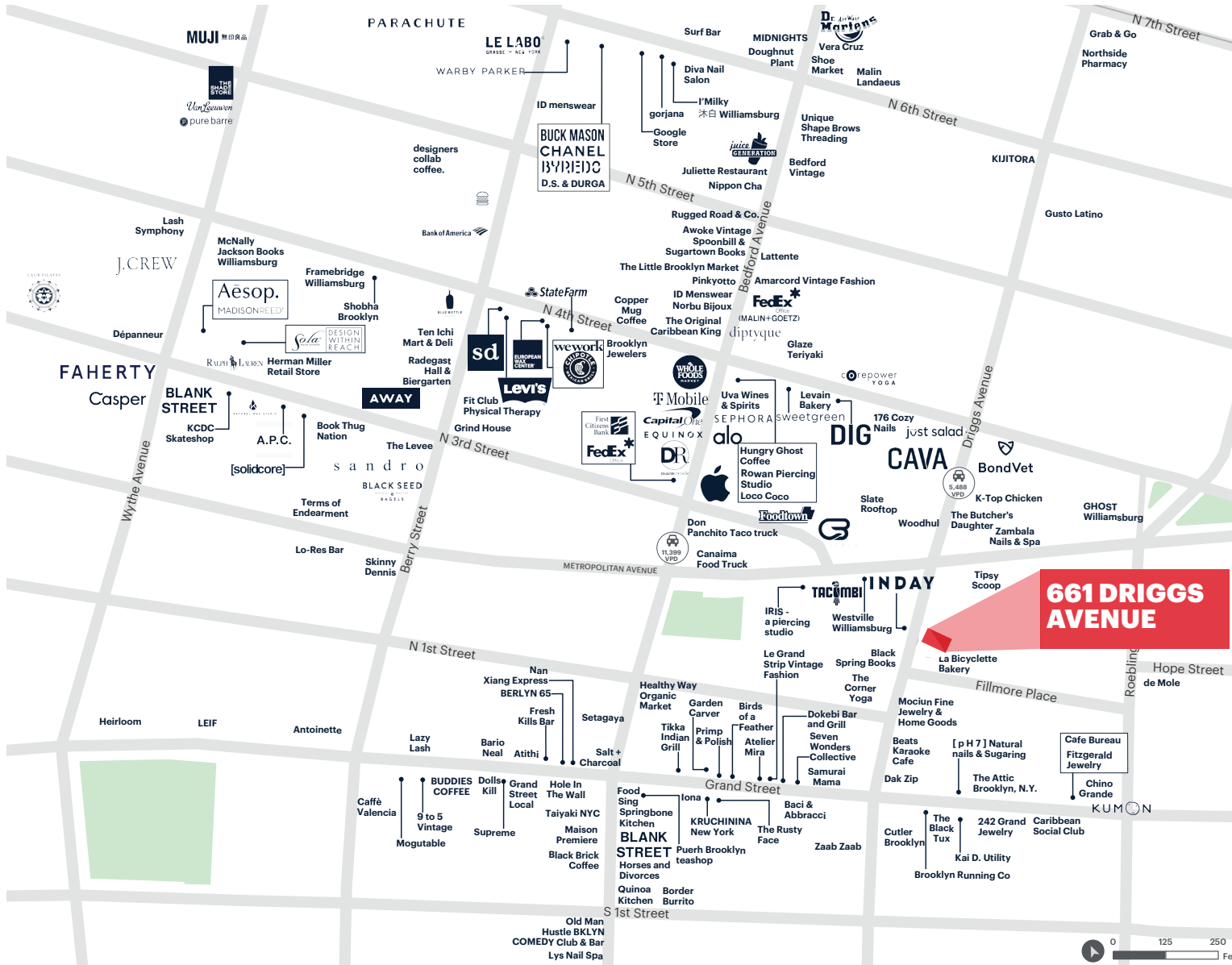
Bedford Avenue

Annual	7,255,571	L
Weekday	20,035	
Weekend	40,252	

EXTERIOR PHOTOS



AREA RETAIL



CONTACT EXCLUSIVE AGENTS

BENJAMIN WEINER
 bweiner@ripcony.com
 646.827.1442

BRENDAN REICHENBACHER
 ber@ripcony.com
 973.902.2436

+ Coming Soon



32 Court Street
 10th Floor
 Brooklyn, NY 11201
 718.233.6565

Please visit us at ripcony.com for more information

This information has been secured from sources we believe to be reliable, but we make no representations as to the accuracy of the information. References to square footage are approximate. Tenant or Buyer must verify the information and bears all risk for any inaccuracies.