



**4,376 SF**

1,970 SF  
Ground Floor  
2,406 SF  
Lower Level

For Lease

**STREET RETAIL**

# 55 HOPE STREET

Between Havemeyer Street and Marcy Avenue

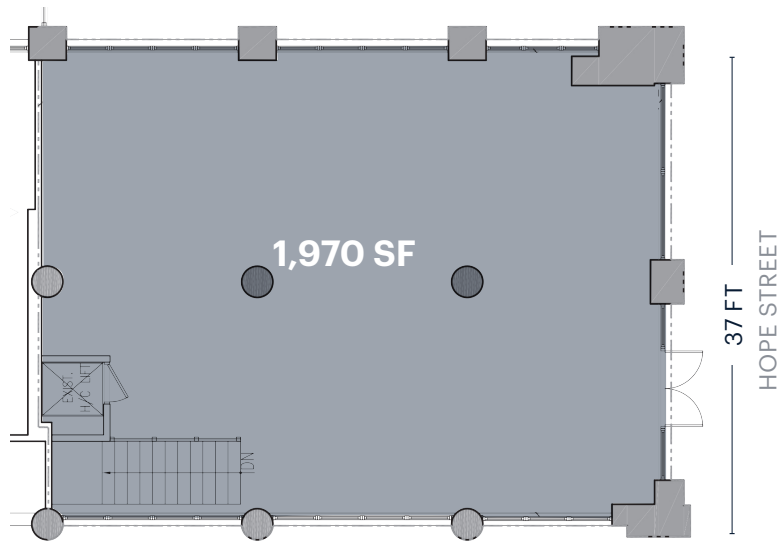
**WILLIAMSBURG**

BROOKLYN | NEW YORK

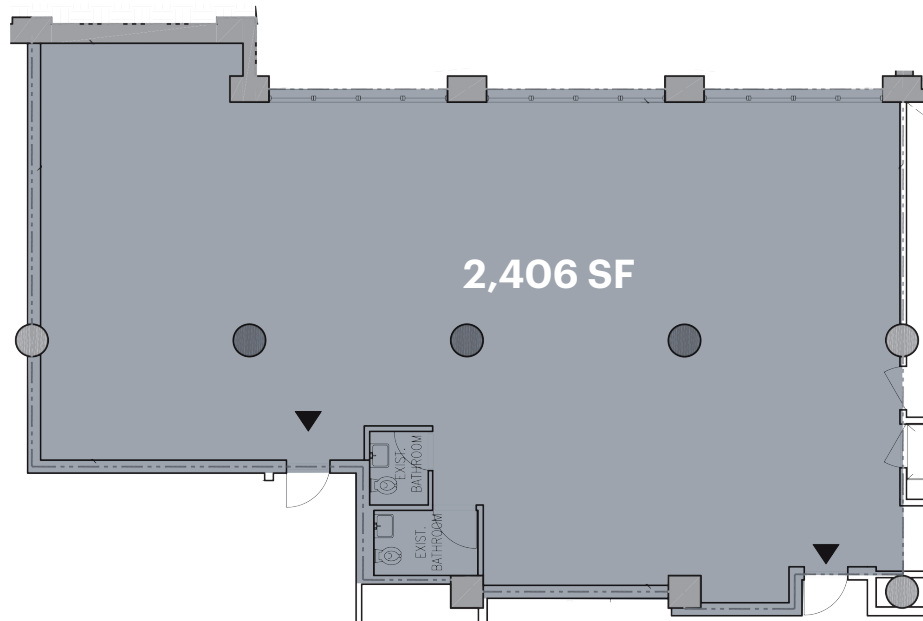
**RIPCO**  
REAL ESTATE

# SPACE DETAILS

## GROUND FLOOR



## LOWER LEVEL



### LOCATION

Between Havemeyer Street and Marcy Avenue

### SIZE

Ground Floor	1,970 SF
Lower Level	2,406 SF
<b>Total</b>	<b>4,376 SF</b>

### FRONTAGE

Hope Street	37 FT
-------------	-------

### CEILING HEIGHTS

Ground Floor	16 FT
Lower Level	16 FT

### POSSESSION

Arranged

### TERM

Negotiable

### NEIGHBORS

Gertie, Recette, Milk Bar, Emmy Squared, Fette Sau, Court Street Grocers, St. Anslem, Spuyten Duyvil, Four Horsemen, and F45 Fitness

### COMMENTS

- Located at the base of a 118-unit luxury residential building
- Excellent ceiling heights and frontage
- Windowed selling lower level with dedicated lift in place
- 1,800 SF of additional storage space available
- All uses considered

### TRANSPORTATION

2022 Ridership Report

#### Metropolitan Ave/ Lorimer St



Annual	3,409,157
Weekday	9,444
Weekend	18,737

#### Marcy Avenue



Annual	2,540,327
Weekday	7,896
Weekend	9,774

#### Bedford Avenue



Annual	7,255,571
Weekday	20,035
Weekend	40,252

#### Metropolitan Ave/ Havemeyer St



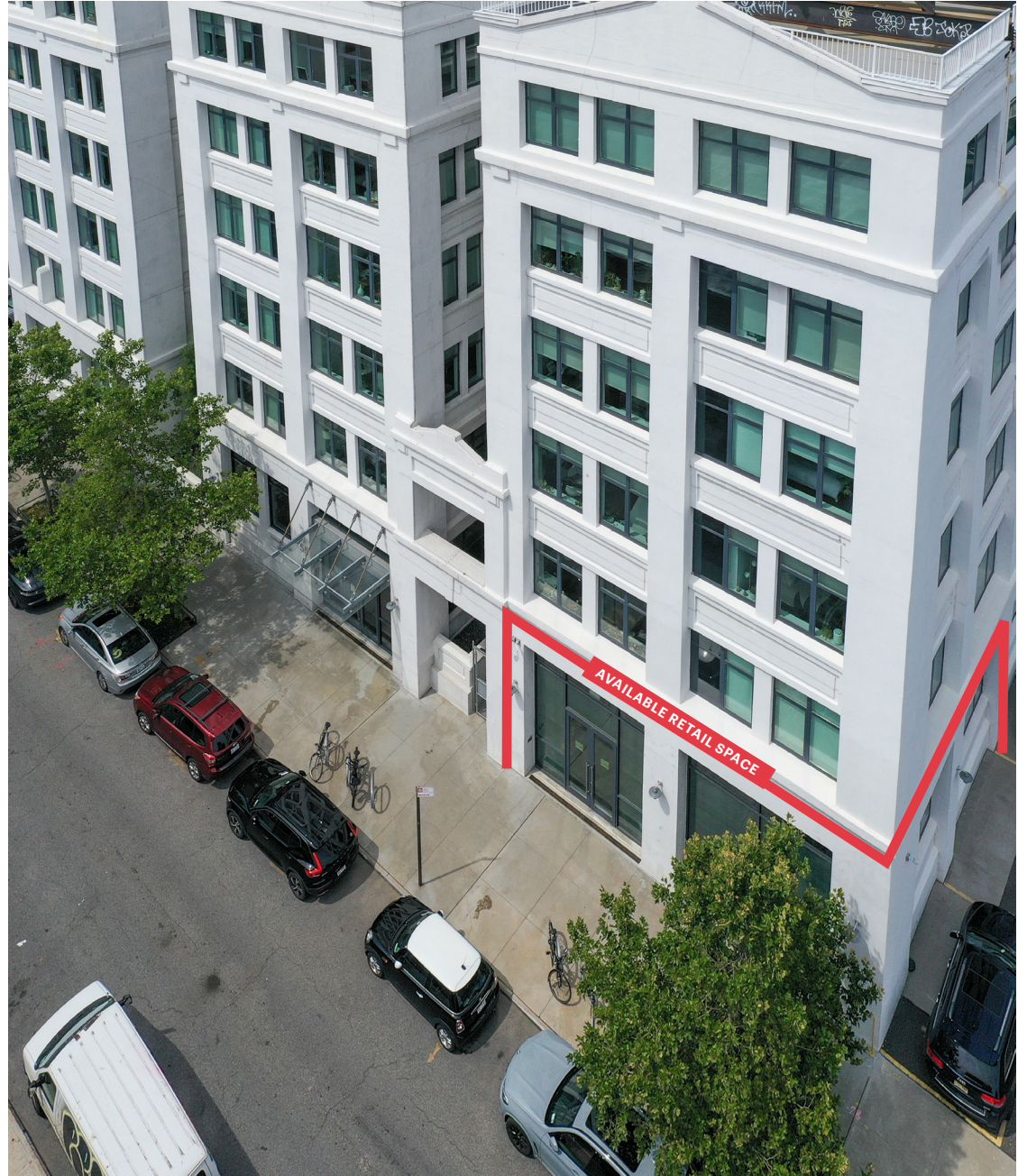
Annual	1,629,007
Weekday	5,237
Weekend	5,454

#### Marcy Ave/ Metropolitan Ave



Annual	558,105
Weekday	1,771
Weekend	1,891

## EXTERIOR PHOTOS



**INTERIOR PHOTOS**

