

**STREET RETAIL**

# 514 EAST 13TH STREET

South block between Avenues A and B

**EAST VILLAGE**

MANHATTAN | NEW YORK

**600 SF**

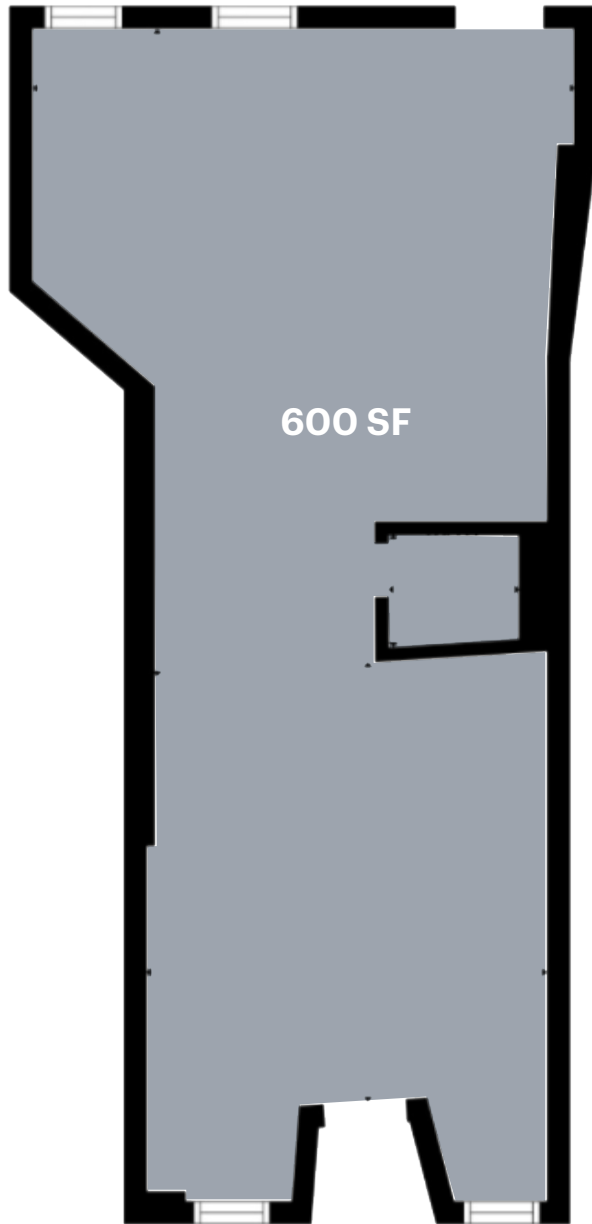
For Lease



**RIPCO**  
REAL ESTATE

## SPACE DETAILS

### GROUND FLOOR



600 SF

14 FT

EAST 13TH STREET

#### LOCATION

South block between  
Avenues A and B

#### SIZE

Ground Floor 600 SF

#### FRONTAGE

East 13th Street 14 FT

#### CEILING HEIGHTS

Ground Floor Up to 10 FT

#### STATUS

Currently vacant

#### TERM

Direct long term

#### POSSESSION

Immediate

#### RENT

Upon request

#### NEIGHBORS

Target, Solid Core, Motel Notell,  
Sally Beauty, and Trader Joe's

#### COMMENTS

Most non-vented uses considered

Roll-up security gate installed

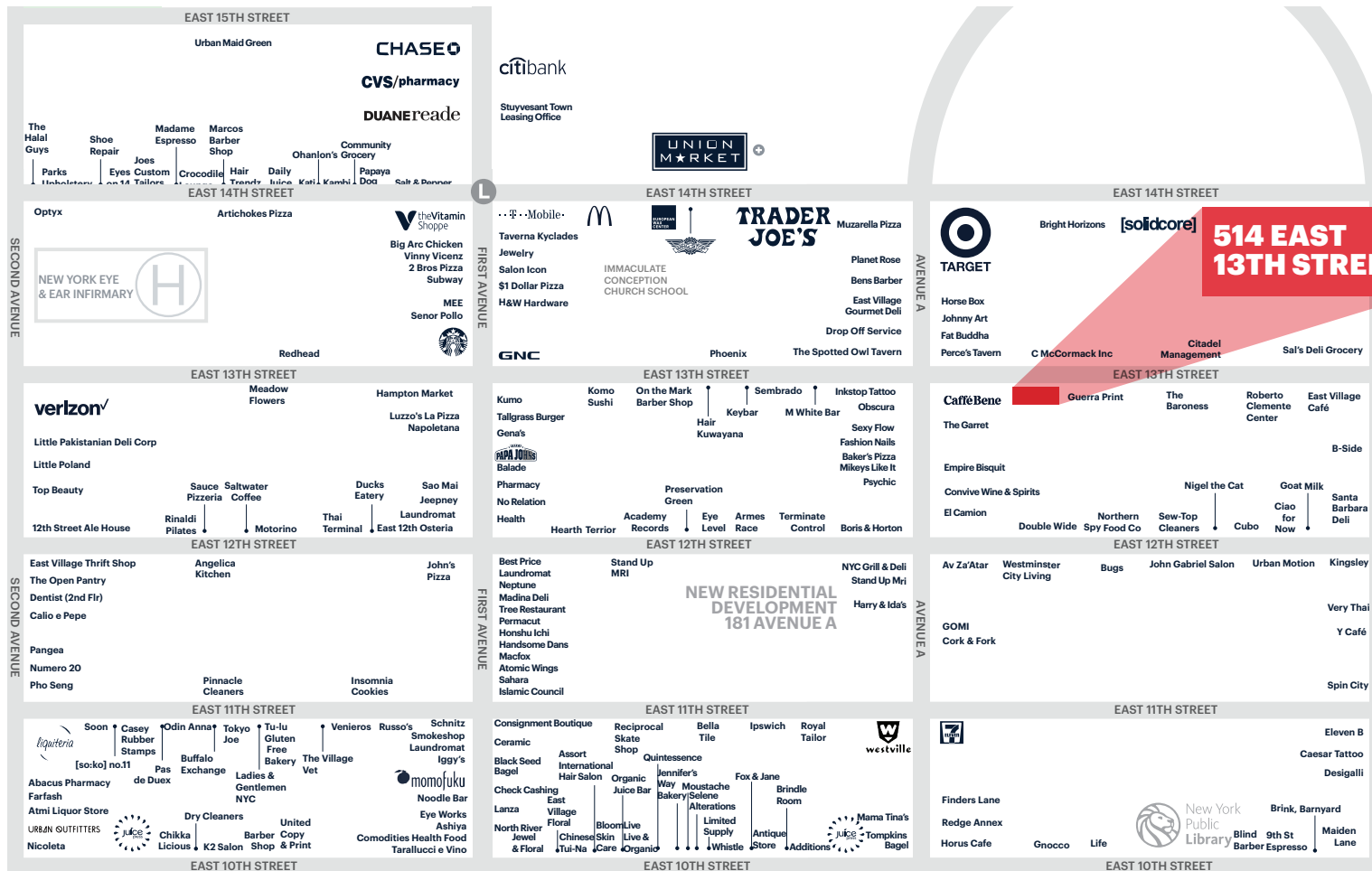
#### TRANSPORTATION

2022 Ridership Report

#### Subway Station

Annual	5,337,253
Weekday	15,721
Weekend	24,806

# AREA RETAIL



## CONTACT EXCLUSIVE AGENTS

**EMILY KRIPITZ**

ekripitz@ripcony.com  
646.290.2023

**BEN DAVIS**

bDavis@ripcony.com  
646.827.9969

⊕ Coming Soon

**RIPCO**  
REAL ESTATE

150 East 58th Street  
15th Floor  
New York, NY 10115  
212.750.6565

Please visit us at [ripcony.com](http://ripcony.com) for more information

This information has been secured from sources we believe to be reliable, but we make no representations as to the accuracy of the information. References to square footage are approximate. Tenant or Buyer must verify the information and bears all risk for any inaccuracies.