

OFFICE/SHOWROOM SPACE

12 MERCER STREET / 54 HOWARD STREET

Northeast corner of Howard Street

SOHO

NEW YORK | NY

1,800 RSF

For Lease



RIPCO
REAL ESTATE

SPACE DETAILS

LOCATION

Northeast corner of Howard Street

SIZE

Second Floor 1,800 RSF

CEILING HEIGHTS

Second Floor 11 FT

POSSESSION

Immediate

RENT

Upon request

COMMENTS

Move-in ready Soho loft space with open floor plan

Space features 6 southwest corner exposure windows

Direct keyed elevator access

Original dark oak hardwood floors

Full kitchen

2 Bathrooms

Tenant-controlled HVAC

Spectrum broadband

Security system in place

TRANSPORTATION

2022 Ridership Report

Canal Street

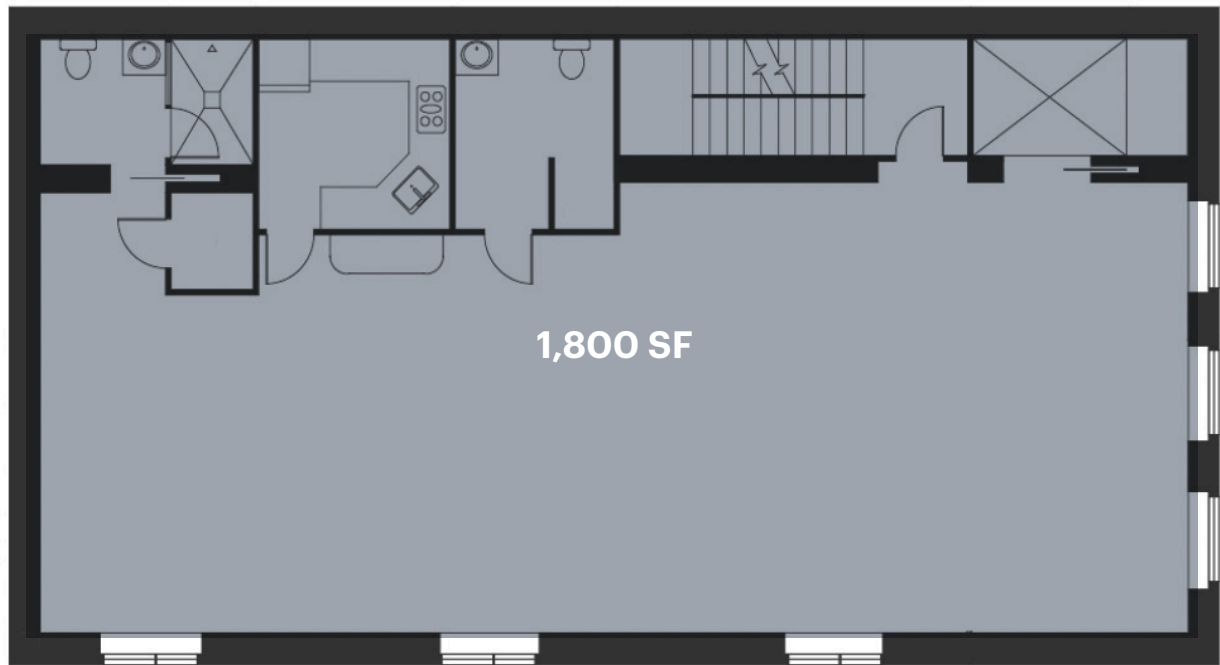
G J Z N Q R

Annual 8,680,004

Weekday 25,054

Weekend 42,346

SECOND FLOOR



MERCER STREET

HOWARD STREET

INTERIOR PHOTOS



AREA MAP



CONTACT EXCLUSIVE AGENTS

BEN SABIN
 bsabin@ripcony.com
 646.290.2018

RICHARD SKULNIK
 rskulnik@ripcony.com
 212.750.0756

+ Coming Soon



150 East 58th Street
 15th Floor
 New York, NY 10155
 212.750.6565

Please visit us at ripcony.com for more information

This information has been secured from sources we believe to be reliable, but we make no representations as to the accuracy of the information. References to square footage are approximate. Buyer must verify the information and bears all risk for any inaccuracies.