



**RETAIL, MEDICAL, OFFICE & FITNESS**  
Retail Mall with Parking

# FLUSHING, NY

**150-24 NORTHERN BLVD**

**SIZE**

Ground Floor - 1,720 SF

**FRONTAGE**

Approx. 17 FT on Northern Blvd

**ASKING RENT**

Upon Request

**CEILING HEIGHTS**

Approx. 11 FT

**STATUS OF PREMISES**

Former Bank of Hope

**CO-TENANTS**

ARITAUM, Cosmos, Korea Village Fitness Center, Cake House WIN, The Korea Times

**NEIGHBORS**

H-Mart, AT&T, KFC, TD Bank, NewBank, IHOP, Queens Public Library, Shinhan Bank America, Domino's Pizza, Dunkin', 7-Eleven, Metro Dermatology, Burger King, T-Mobile, Citizens Bank

**COMMENTS**

- Former Bank of Hope space on the heavily trafficked Northern Boulevard
- The building layout is a mini-mall with small stores within and kiosks; the space is a traditional storefront with wide glass double door entrance on Northern Boulevard and also has wide glass double door entrance in the rear to the main atrium of mall
- Surrounded by a mix of both Local and National Tenants
- Over 48,000 cars pass the site daily on Northern Blvd., serviced by 3 bus lines and is also serviced by multiple bus lines steps away from the property
- Parking is available for retail in the rear and cellar for approximately 50 cars
- All retail uses are considered including office, medical and fitness uses

## CONTACT EXCLUSIVE AGENTS

**MICHELLE ABRAMOV**

mabramov@ripcony.com

D: 718.663.2652

C: 718.607.1920

**SCOTT ROTHSTEIN**

srothstein@ripcony.com

D: 718.704.1450

C: 516.754.0884

**GREG BATISTA**

gbatista@ripcony.com

D: 516.342.8277

C: 516.351.5604

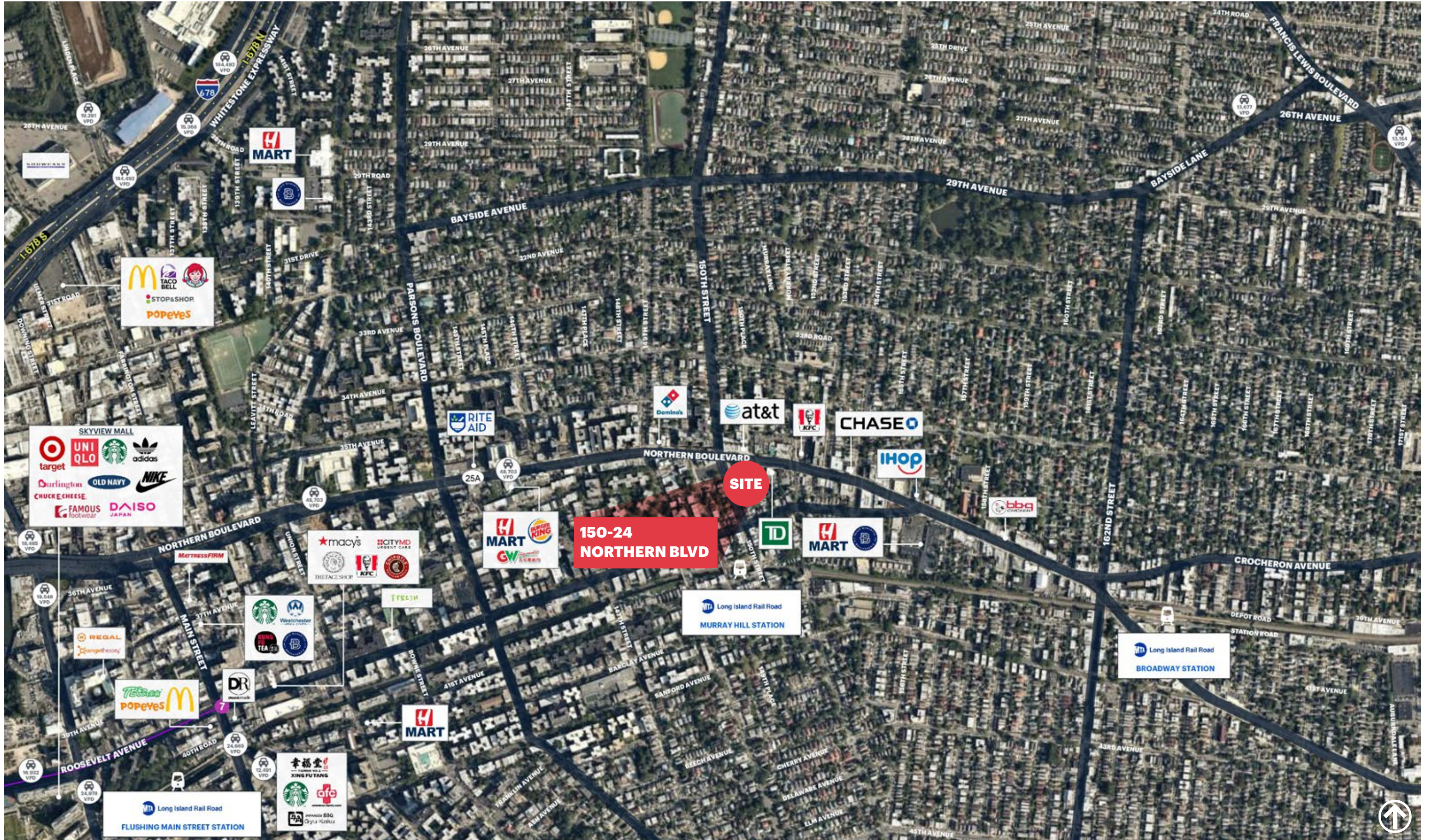


80-02 Kew Gardens Rd  
3rd Floor  
Queens, NY 11415  
718.663.2650

Please visit us at [ripcony.com](http://ripcony.com) for more information

This information has been secured from sources we believe to be reliable, but we make no representations as to the accuracy of the information. References to square footage are approximate. Buyer must verify the information and bears all risk for any inaccuracies.

# MARKET AERIAL

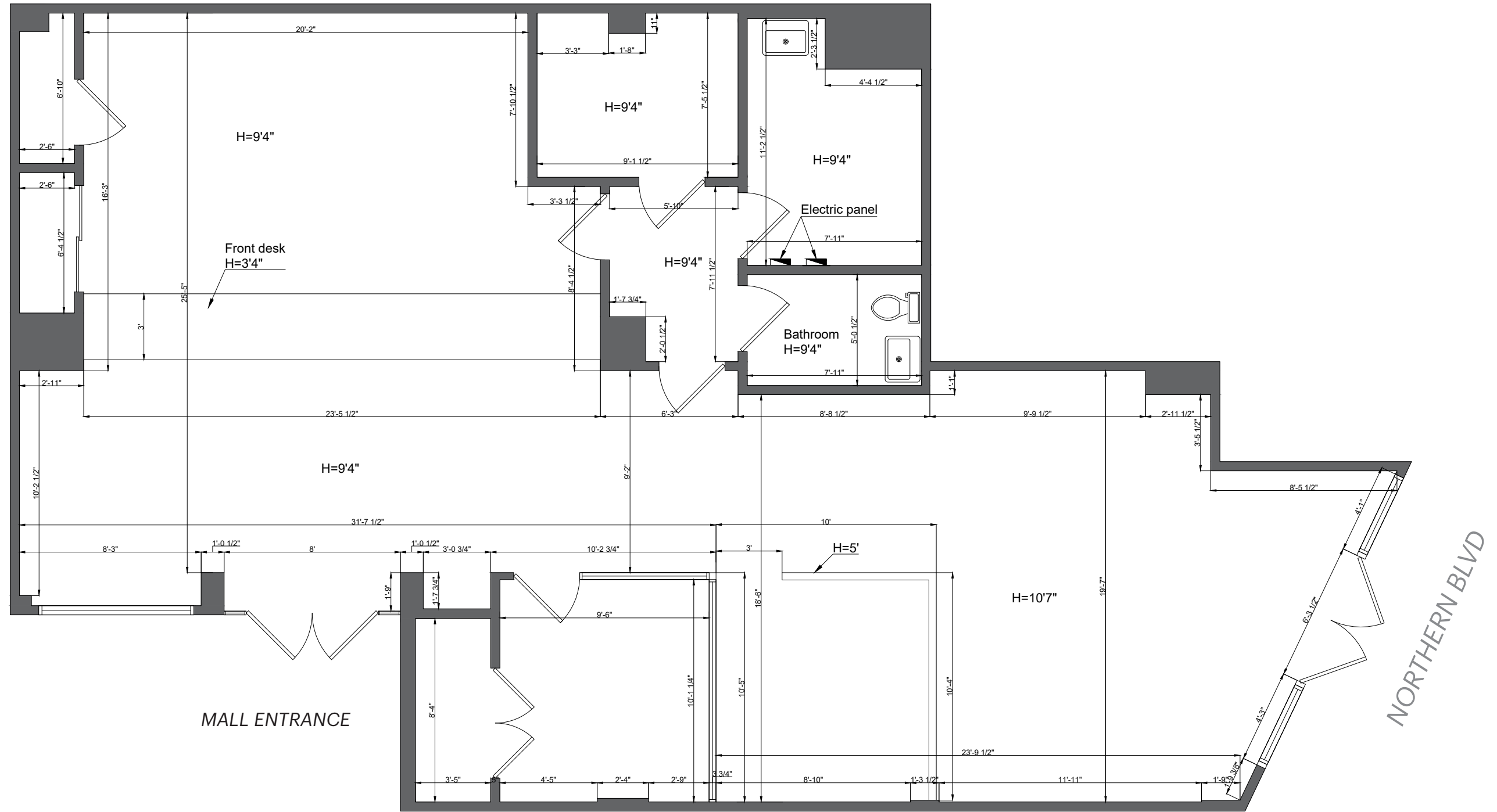


**AERIAL**



# FLOOR PLAN

## GROUND FLOOR



# AREA DEMOGRAPHICS



150-24 NORTHERN BLVD FLUSHING, NEW YORK

## 1 MILE RADIUS

### POPULATION

131,897

### HOUSEHOLDS

48,787

### AVERAGE HOUSEHOLD INCOME

\$77,393

### MEDIAN HOUSEHOLD INCOME

\$49,339

### COLLEGE GRADUATES (BACHELOR'S +)

29,961 - 29.0%

### TOTAL BUSINESSES

4,495

### TOTAL EMPLOYEES

42,160

### DAYTIME POPULATION (W/ 16 YR +)

117,441

## 2 MILE RADIUS

### POPULATION

269,665

### HOUSEHOLDS

96,664

### AVERAGE HOUSEHOLD INCOME

\$90,435

### MEDIAN HOUSEHOLD INCOME

\$59,033

### COLLEGE GRADUATES (BACHELOR'S +)

65,050 - 32.0%

### TOTAL BUSINESSES

8,807

### TOTAL EMPLOYEES

99,876

### DAYTIME POPULATION (W/ 16 YR +)

253,513

## 3 MILE RADIUS

### POPULATION

533,118

### HOUSEHOLDS

183,580

### AVERAGE HOUSEHOLD INCOME

\$95,781

### MEDIAN HOUSEHOLD INCOME

\$65,108

### COLLEGE GRADUATES (BACHELOR'S +)

127,093 - 33.0%

### TOTAL BUSINESSES

13,891

### TOTAL EMPLOYEES

157,154

### DAYTIME POPULATION (W/ 16 YR +)

457,499

# AREA DEMOGRAPHICS

