



RETAIL SPACE

CENTEREACH, NY

CENTEREACH SQUARE

MIDDLE COUNTRY ROAD AND MARK TREE ROAD

UNDER NEW OWNERSHIP!

AVAILABLE SIZES

997 SF up to 14,418 SF

2,025 SF Auto Garage

*6,065 SF 2nd Generation End Cap (Divisible)

ASKING RENT

Upon Request

NNNs - \$9.97 PSF

Taxes - \$6.34 PSF

CAM - \$2.87 PSF

Snow - \$0.77 PSF

CO-TENANTS

Walmart, Big Lots, Savers (Coming Soon), Phenix Salon Suites (Coming Soon), 8 Bit Bites (Coming Soon), Planet Fitness, Party City, Goldfish Swim, Tropical Smoothie Cafe, Sally Beauty, Leslie's Pool Supplies, Olive Garden, Moe's Southwest Grill, GameStop, Denny's, Rockbox Fitness, Dickey's BBQ

NEIGHBORS

Dollar Tree, Walgreens, CVS, McDonald's, AutoZone, Harbor Freight Tools, Buffalo Wild Wings, Visionworks, Arby's, Wing Stop, Brownstones, AT&T, Pro-Health, Cabo Fresh, Voodoo Crab, Gold Medal Gymnastics, Burger King, Ocean State Job Lot, Advanced Auto, Quick Chek

COMMENTS

Multiple traffic light access

Convenient access to Nicolls Rd (Rt. 97)

2,307 parking spaces

GLA: 387,034 SF

45,000 VPD on Middle Country Road

CONTACT EXCLUSIVE AGENTS

JEREMY ISAACS

jisaacs@ripcony.com

516.933.8880

DANIEL GLAZER

dglazer@ripcony.com

516.933.8880

JAMES VALENTI

jvalenti@ripcony.com

516.933.8880

BRIAN VON SCHMID

bschmid@ripcony.com

516.933.8880



1000 Woodbury Road
Suite 100
Woodbury, NY 11797
516.933.8880

Please visit us at ripcony.com for more information

This information has been secured from sources we believe to be reliable, but we make no representations as to the accuracy of the information. References to square footage are approximate. Buyer must verify the information and bears all risk for any inaccuracies.

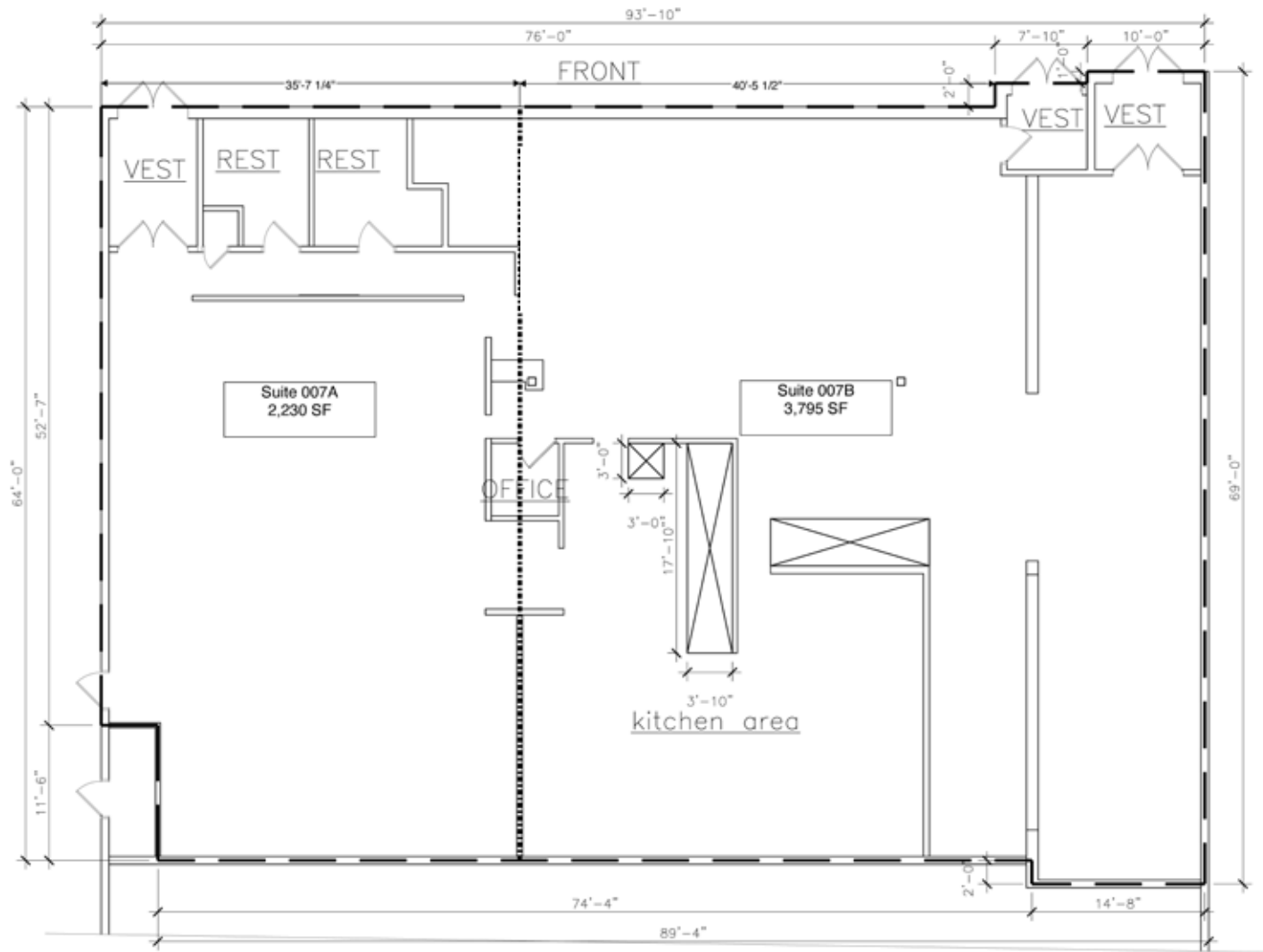


SITE PLAN

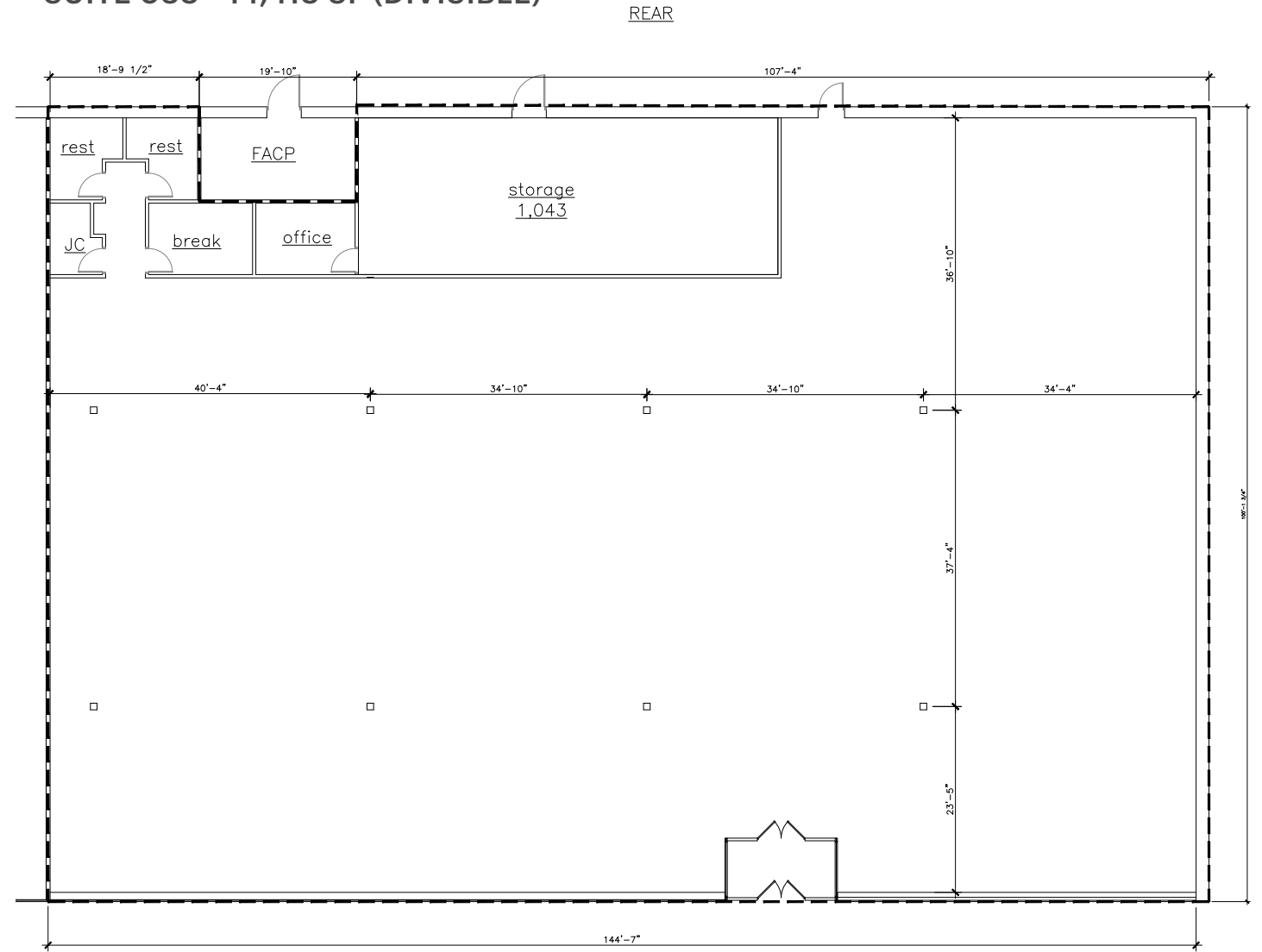


	TENANT	SQUARE FEET
1	Walmart	151,067 SF
2	Planet Fitness	23,118 SF
3	AVAILABLE	1,407 SF
4	AVAILABLE	1,882 SF
5	AVAILABLE	5,452 SF
		Can Be Combined 8,741 SF
6	Goldfish Swim	9,345 SF
7	AVAILABLE	6,065 SF
		2nd Generation Restaurant End Cap (Divisible)
8	Tropical Smoothie Cafe	1,986 SF
9	New Golden Buffet	7,000 SF
10	AVAILABLE	2,960 SF
11	AVAILABLE	2,400 SF
12	Sally Beauty	1,467 SF
13	Savers - Coming Soon	26,751 SF
14		
15	AVAILABLE	8,000 SF
16	AVAILABLE - AUTO GARAGE	2,025 SF
17	8 Bit Bites - Coming Soon	2,168 SF
18	Leslie's Swimming Pools	4,258 SF
19	Dickey's BBQ	2,150 SF
20	Rockbox Fitness	3,350 SF
21	Rainbow	5,000 SF
22	Olive Garden	9,100 SF
23	Denny's Restaurant	5,000 SF
24	Party City	14,885 SF
25	Supercuts	1,825 SF
26	AVAILABLE	997 SF
27	U.S. Postal Service	10,000 SF
28	Moe's Southwest Grill	2,500 SF
29	Big Lots	33,600 SF
30	Phenix Salons (Coming Soon)	9,600 SF
31	Carter's	4,790 SF
32	Centereach Liquor	3,500 SF
33	Jejojo Bagels	1,600 SF
34	Model Nails (Coming Soon)	3,800 SF
35	I-Fix-Screens.com, Inc.	1,600 SF
36	Gamestop	1,400 SF
37	Voullapitta	1,600 SF
38	AVAILABLE	14,418 SF (Divisible)

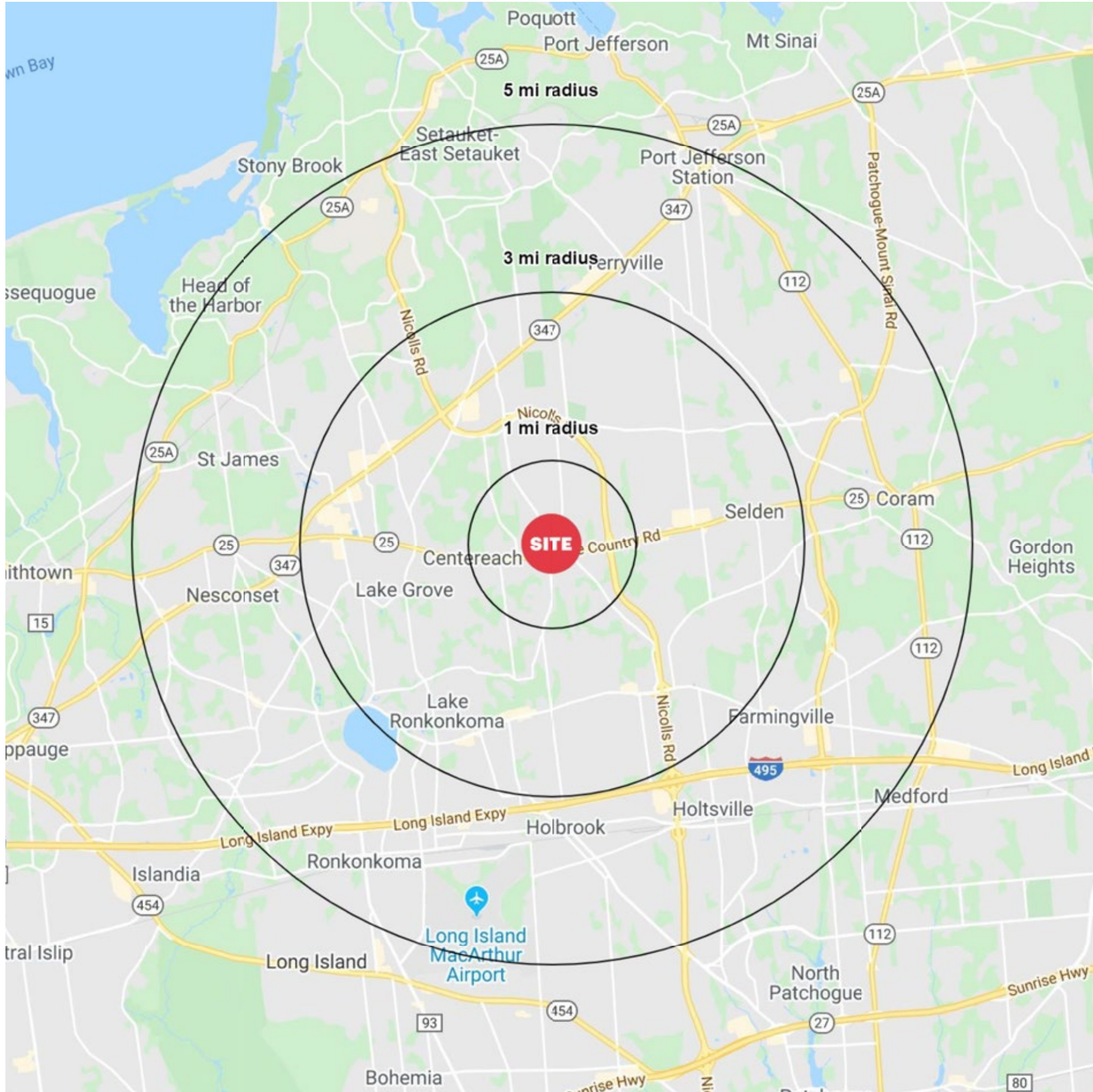
SUITE 007 - 6,065 SF - 2ND GENERATION RESTAURANT DIVISION PLAN



SUITE 038 - 14,418 SF (DIVISIBLE)



AREA DEMOGRAPHICS



CENTEREACH SQUARE CENTEREACH, NY

1 MILE RADIUS

POPULATION
11,556

HOUSEHOLDS
3,681

AVERAGE HOUSEHOLD INCOME
\$117,723

MEDIAN HOUSEHOLD INCOME
\$105,845

COLLEGE GRADUATES (BACHELOR'S +)
2,207 - 28.0%

TOTAL BUSINESSES
485

TOTAL EMPLOYEES
3,738

DAYTIME POPULATION (W/ 16 YR +)
6,735

3 MILE RADIUS

POPULATION
103,664

HOUSEHOLDS
35,533

AVERAGE HOUSEHOLD INCOME
\$121,231

MEDIAN HOUSEHOLD INCOME
\$104,560

COLLEGE GRADUATES (BACHELOR'S +)
24,354 - 33.7%

TOTAL BUSINESSES
3,269

TOTAL EMPLOYEES
27,898

DAYTIME POPULATION (W/ 16 YR +)
58,797

5 MILE RADIUS

POPULATION
250,867

HOUSEHOLDS
85,522

AVERAGE HOUSEHOLD INCOME
\$123,303

MEDIAN HOUSEHOLD INCOME
\$106,233

COLLEGE GRADUATES (BACHELOR'S +)
63,682 - 36.9%

TOTAL BUSINESSES
9,445

TOTAL EMPLOYEES
115,274

DAYTIME POPULATION (W/ 16 YR +)
191,890

AREA DEMOGRAPHICS

