

2ND FLOOR SPACE AVAILABLE
BAY LAKE CENTER

13907 North Dale Mabry Highway

TAMPA | FLORIDA

± 990 RSF - ± 1,401 RSF



SUITE 212



SUITE 204

SPACE DETAILS

AVAILABILITY

Suite 204: ±813 USF | ±990 RSF

Suite 212: ±1,151 USF | ±1,401 RSF

CO-TENANTS

State Farm, Posh by Poe Salon & Spa, Body Works Massage Therapy

NEIGHBORS

Circle K, Shell, Regions Bank, Bobs Carpet & Flooring

COMMENTS

- 2nd floor office space
- Excellent frontage along Dale Mabry Hwy
- Plenty of on-site parking
- Elevator access to 2nd level
- Excellent tenant mix

DEMOGRAPHICS

POPULATION

5 Min	15,230
10 Min	123,122
15 Min	322,931

DAYTIME POPULATION

5 Min	23,911
10 Min	125,285
15 Min	351,822

TOTAL HOUSEHOLDS

5 Min	6,721
10 Min	50,378
15 Min	129,139

AVERAGE HH INCOME

5 Min	\$123,452
10 Min	\$101,418
15 Min	\$87,285

TOTAL BUSINESSES

5 Min	1,797
10 Min	7,074
15 Min	16,644

TOTAL EMPLOYEES

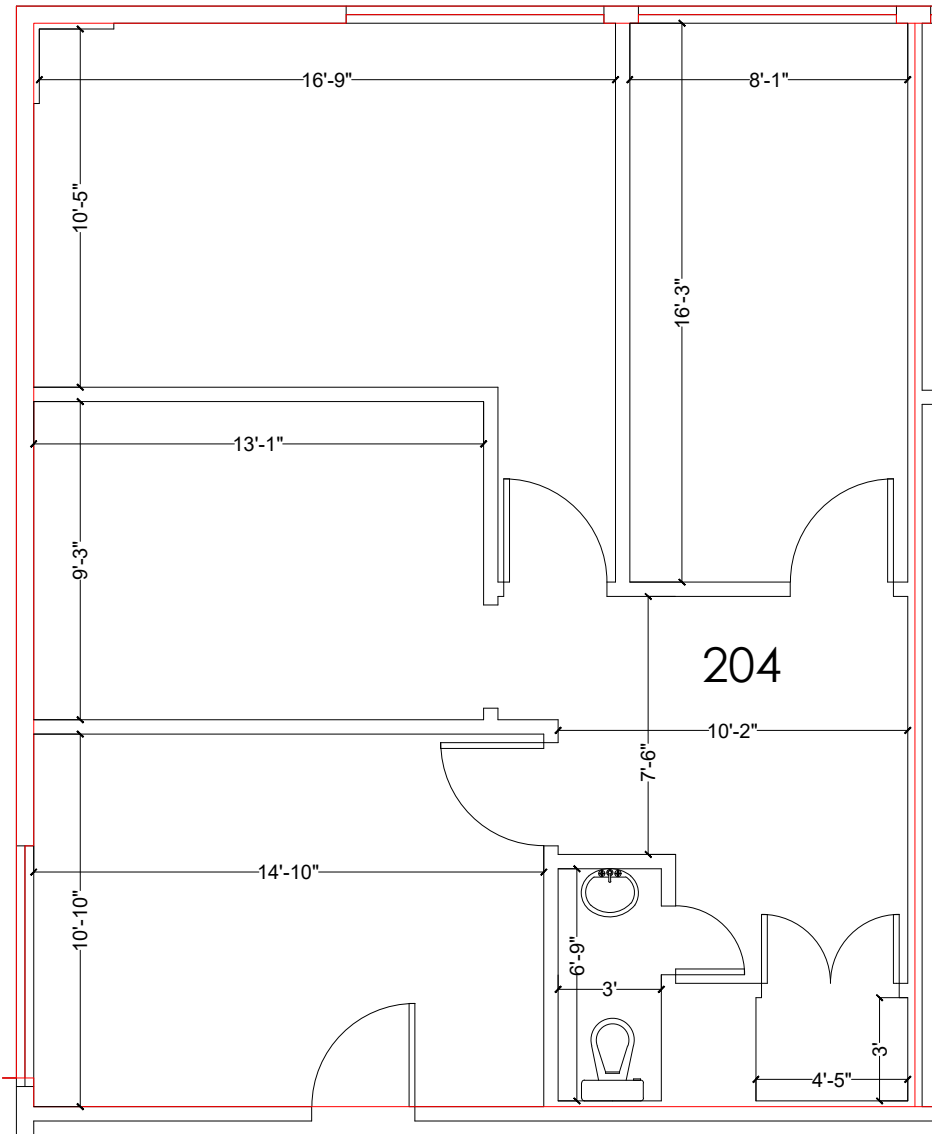
5 Min	17,572
10 Min	71,317
15 Min	200,692

SITE PLAN

UNIT #	TENANT
101	Re/Max ACR Elite Group
102	Body Work Massage Therapy
103	Ankle & Foot Center of Tampa
104	State Farm
202	A Salon by the Lake
203	Honest Hair Restoration
204	AVAILABLE ±813 USF ±990 RSF
206	Avista Bay Realty, LLC
212	AVAILABLE ±1,151 USF ±1,401 RSF
214	Skill Point Therapy
216	Precise Family Health

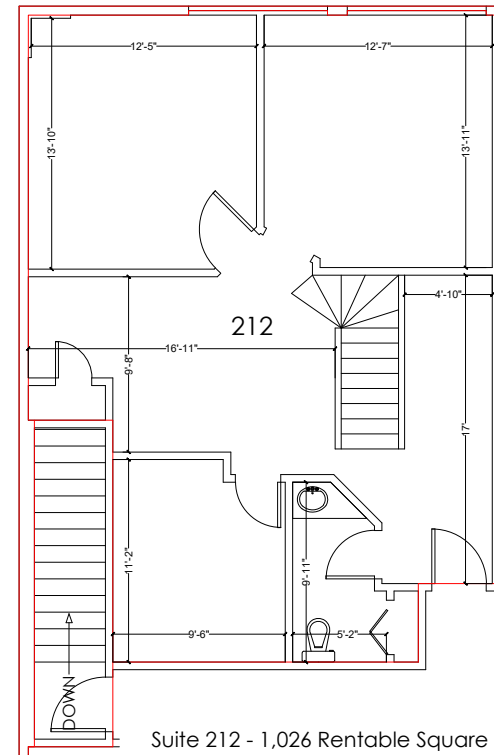
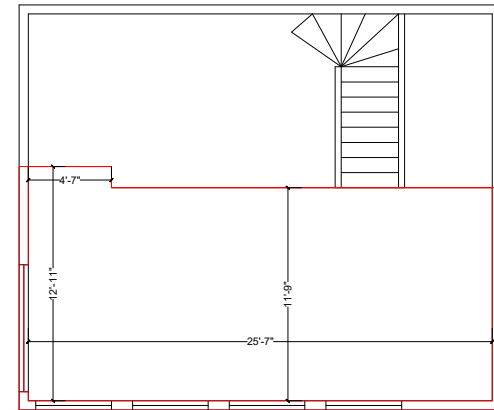


FLOOR PLAN - SUITE 204



Suite 204 - 990 Rentable Square Feet

FLOOR PLAN - SUITE 212



Suite 212 - 1,026 Rentable Square Feet

Suite 212 (2nd) - 375 Rentable Square Feet

RETAIL AREA MAP

