

RETAIL/RESTAURANT/MEDICAL

9023 THIRD AVENUE

Northeast corner of 91st Street and Third Avenue

BAY RIDGE

BROOKLYN | NY

1,850 SF

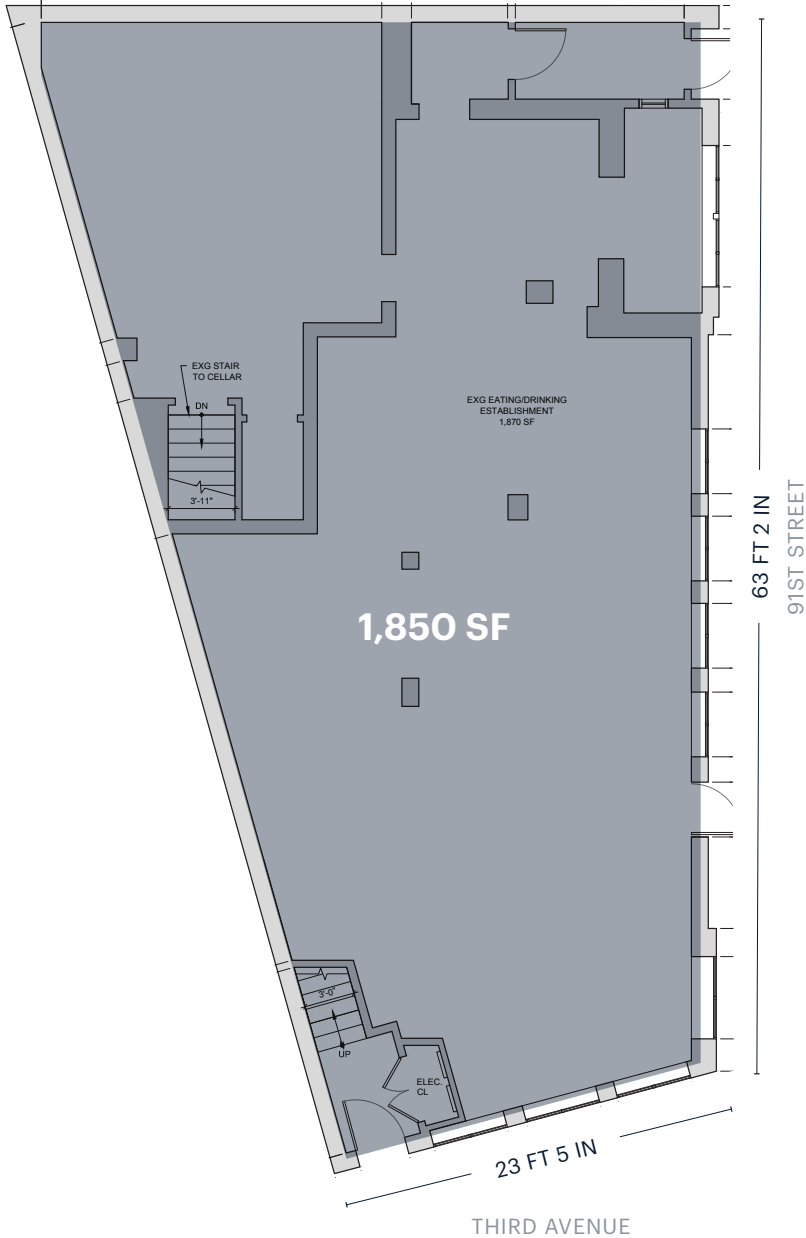
For Lease



RIPCO
REAL ESTATE

SPACE DETAILS

GROUND FLOOR



LOCATION

Northeast corner of 91st Street and Third Avenue

SIZE

Ground Floor 1,850 SF
Includes Associated Lower Level

FRONTAGE

Third Avenue 23 FT 5 IN
91st Street 63 FT 2 IN

STATUS

Formerly Pipin's Pub

POSSESSION

Arranged

TERM

Long term

RENT

Upon request

NEIGHBORS

The Little Cupcake Bakeshop, Foodtown, Paneantico, Starbucks, Panino Rustico, Bridgeview Diner, and Chadwick's

COMMENTS

Directly across from super busy Foodtown

TRANSPORTATION

2022 Ridership Report

86th Street	R	Bay Ridge/ 95th Street	R
Annual	2,269,098	Annual	1,020,739
Weekday	7,544	Weekday	3,421
Weekend	6,330	Weekend	2,754

AREA RETAIL



**CONTACT
EXCLUSIVE
AGENT**

HYMIE M. DWECK
hdweck@ripcony.com
718.233.6565

+ Coming Soon

RIPCO
REAL ESTATE

32 Court Street
10th Floor
Brooklyn, NY 11201
718.233.6565

Please visit us at ripcony.com for more information

This information has been secured from sources we believe to be reliable, but we make no representations as to the accuracy of the information. References to square footage are approximate. Buyer must verify the information and bears all risk for any inaccuracies.