

**RETAIL SPACE**

# 777 AVENUE OF THE AMERICAS

Between West 26th and 27th Streets

**CHELSEA**

MANHATTAN | NY

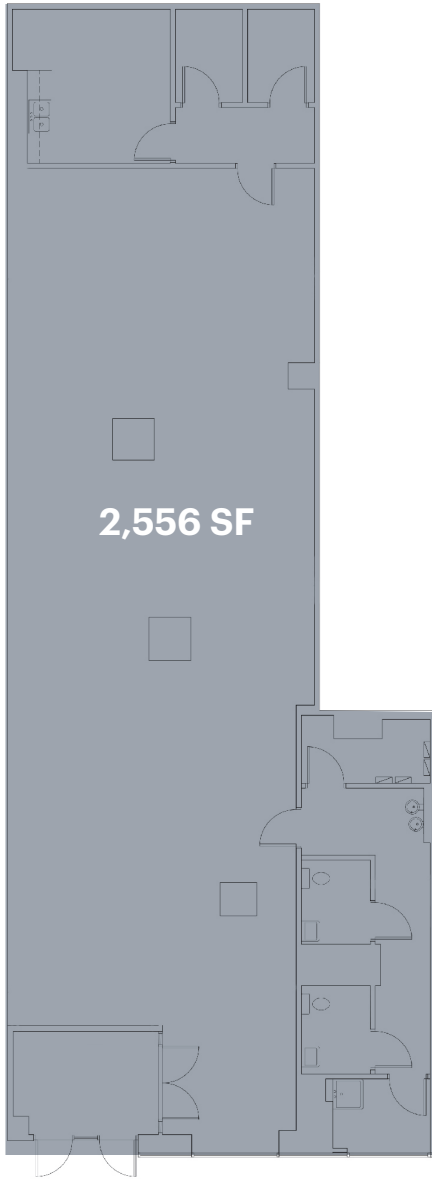
**2,556 SF**

For Lease



# SPACE DETAILS

## GROUND FLOOR



2,556 SF

34 FT

AVENUE OF THE AMERICAS

### LOCATION

Avenue of the Americas between West 26th and 27th Streets

### SIZE

Ground Floor 2,556 SF

### FRONTAGE

Avenue of the Americas 34 FT

### CEILING HEIGHTS

Ground Floor 10 FT 5 IN

### STATUS

Formerly Wells Fargo

### TERM

Upon request

### POSSESSION

Immediate

### NEIGHBORS

Fairway Market, CVS, Gregory's Coffee, Duane Reade, Moxy Hotel Chelsea

### COMMENTS

At the base of a 32 story luxury residential rental building

### TRANSPORTATION

2022 Ridership Report

#### Seventh Avenue/ 28th Street

Annual	2,584,967
Weekday	8,165
Weekend	9,356

1

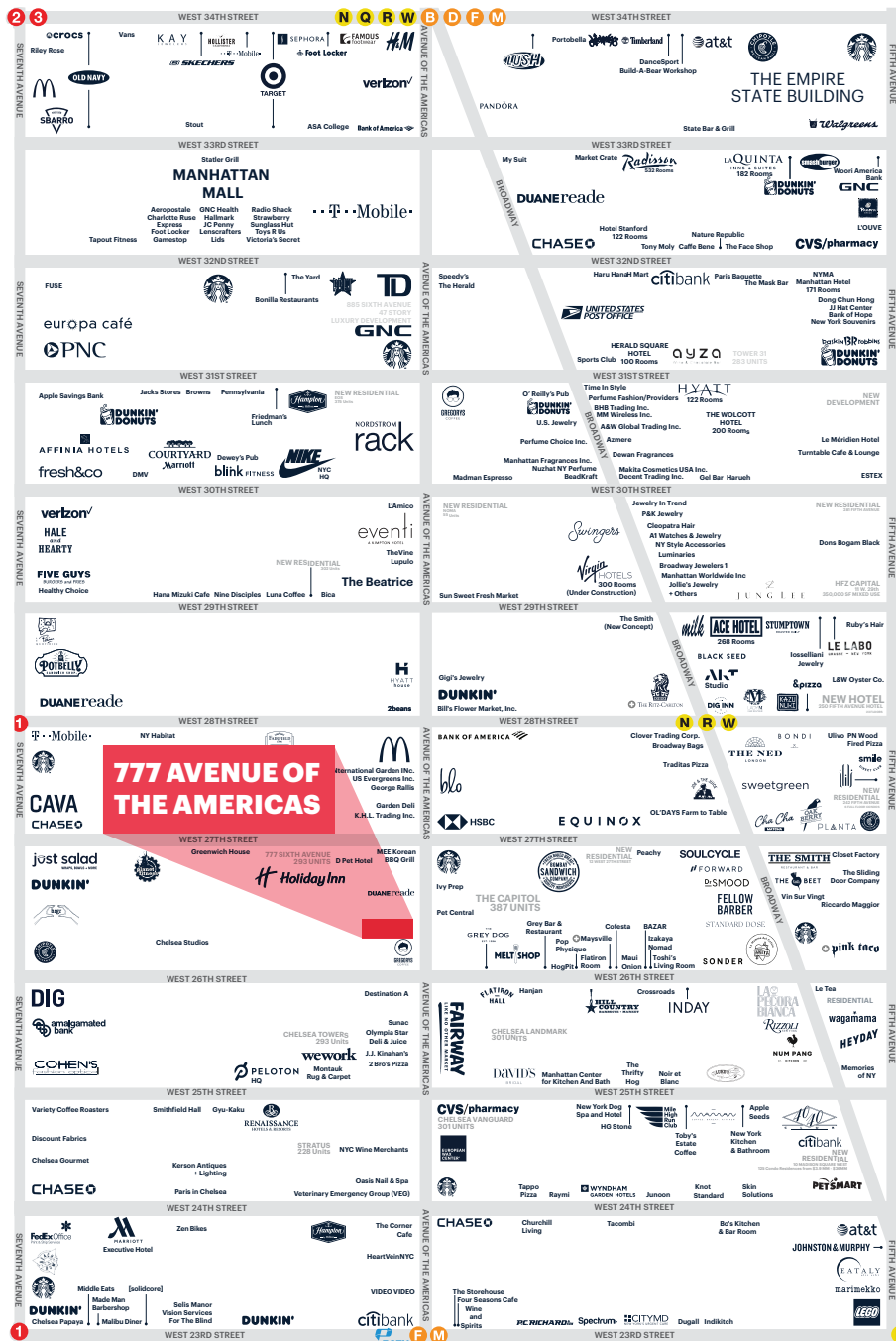
#### Avenue of the Americas/ 28th Street

Annual	2,142,492
Weekday	6,347
Weekend	9,708

R W



# AREA RETAIL



**777 AVENUE OF THE AMERICAS**

## CONTACT EXCLUSIVE AGENTS

**ANDREW MANDELL**

amandell@ripcony.com | 212.750.0705

**SAM MARTORELLA**

smartorella@ripcony.com | 212.230.5882

**RIPCO**  
REAL ESTATE

150 East 58th Street  
15th Floor  
New York, NY 10115  
212.750.6565

Please visit us at [ripcony.com](http://ripcony.com) for more information

This information has been secured from sources we believe to be reliable, but we make no representations as to the accuracy of the information. References to square footage are approximate. Buyer must verify the information and bears all risk for any inaccuracies.