

PRIME FULLY BUILT-OUT RETAIL CONDO

AVAILABLE FOR SALE
ASKING PRICE \$1,925,000

24 EAST 22ND STREET

Flatiron District, Manhattan | New York



RIPCO
INVESTMENT SALES

24 EAST 22ND STREET
FOR SALE

INVESTMENT HIGHLIGHTS

Located on the South side of East 22nd Street

Between Park Avenue South
and Broadway

1,248 GSF (above grade) 600 SF (below grade)

Building size

14 FT+

Ceiling Heights

M1-M5

Zoning

Steps from the 23rd Street 6 Subway line

2022 Annual Ridership: 4,766,220

Steps from the 23rd Street R & W Subway lines

2022 Annual Ridership: 3,645,349

Fully built-out space

Move-in ready for a potential tenant

Excellent user opportunity

Delivered vacant

Fully glass storefront

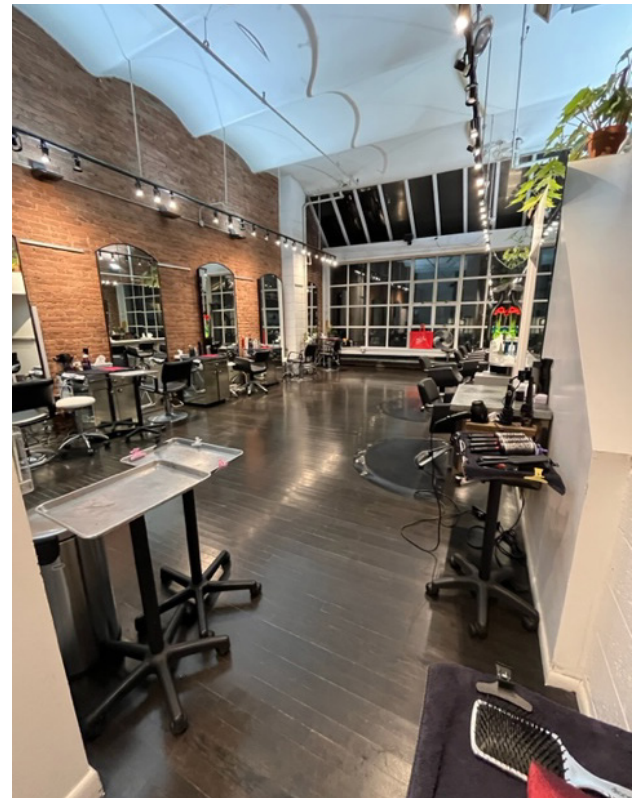
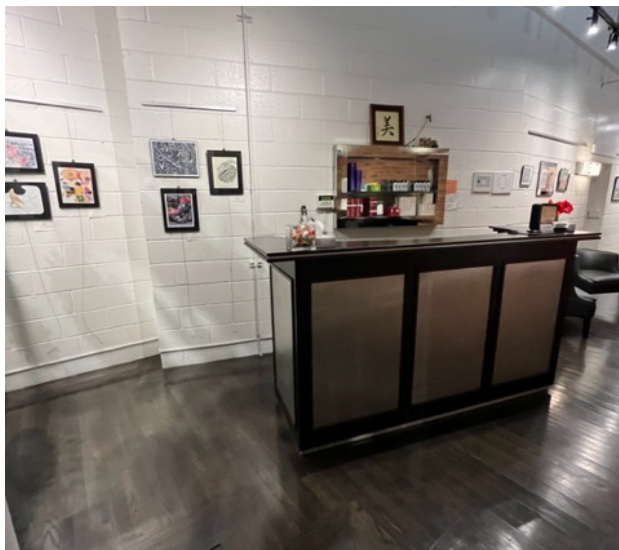
Tax Class 2C

\$41,181.60 Property Taxes ('23-'24)

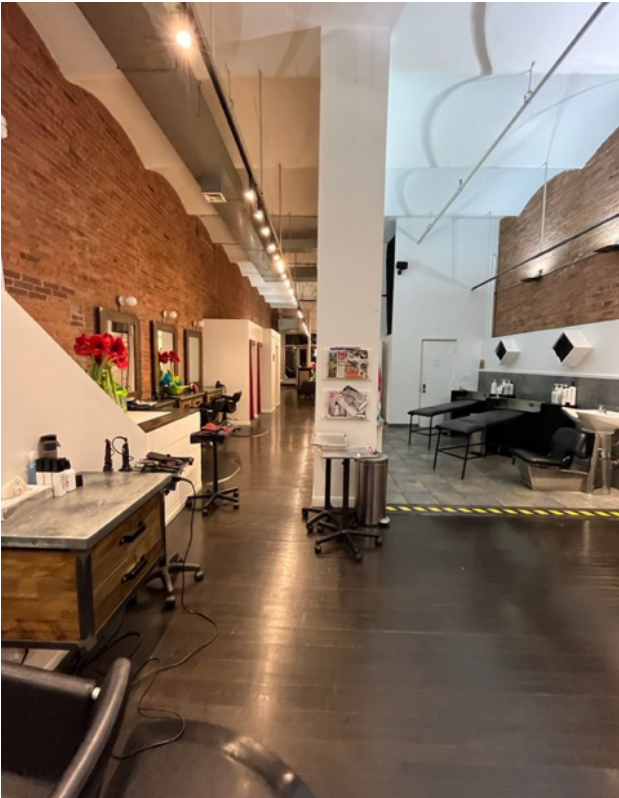
CAM

\$31,152 per annum

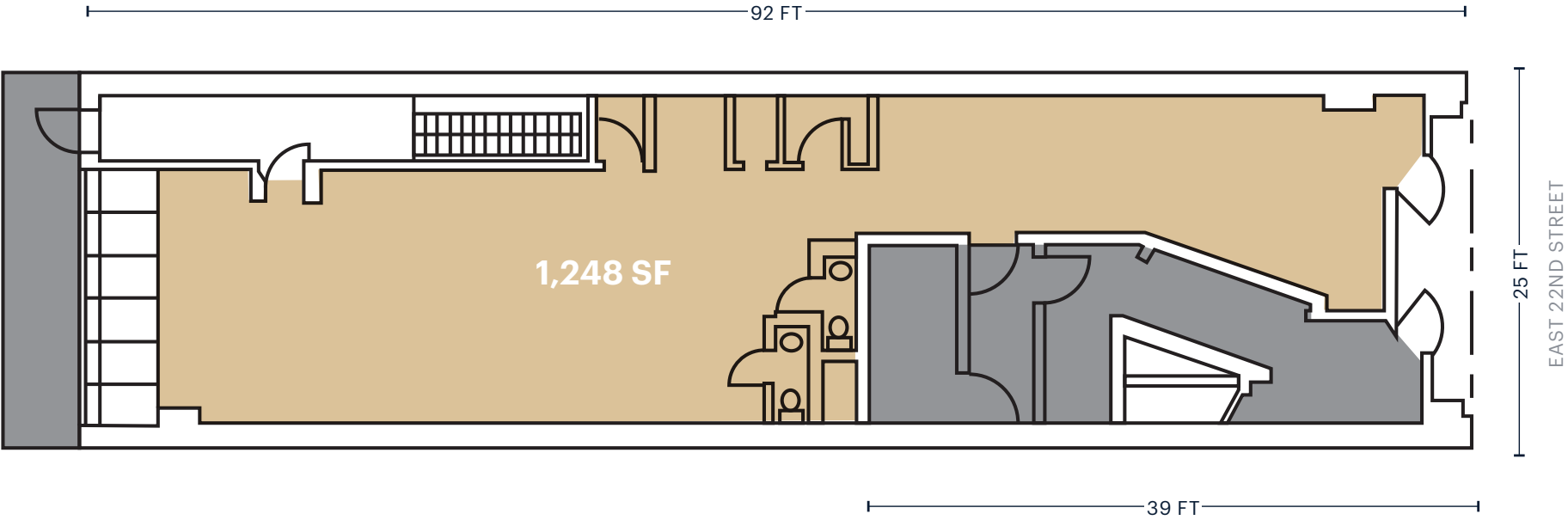
ADDITIONAL INTERIOR PHOTOS



ADDITIONAL INTERIOR PHOTOS



GROUND FLOOR



AREA RETAIL



24 EAST 22ND STREET
FOR SALE

CONTACT EXCLUSIVE AGENTS

FOR SALE INQUIRIES

EDDIE ESSES

eesses@ripcony.com
646.827.7737

ALEX SVETLAKOU

asvetlakou@ripcony.com
646.827.9968

DREW MCWILLIAMS

dmcwilliams@ripcony.com
718.663.2649

RIPCO
INVESTMENT SALES

32 COURT STREET, FLOOR 10, BROOKLYN, 11201 | RIPCONY.COM

This information has been secured from sources we believe to be reliable, but we make no representations as to the accuracy of the information. References to square footage are approximate. Buyer must verify the information and bears all risk for any inaccuracies.