



410 SF

Available
For Lease

RETAIL SPACE

337 BLEECKER STREET

East Block between Christopher and West 10th Streets

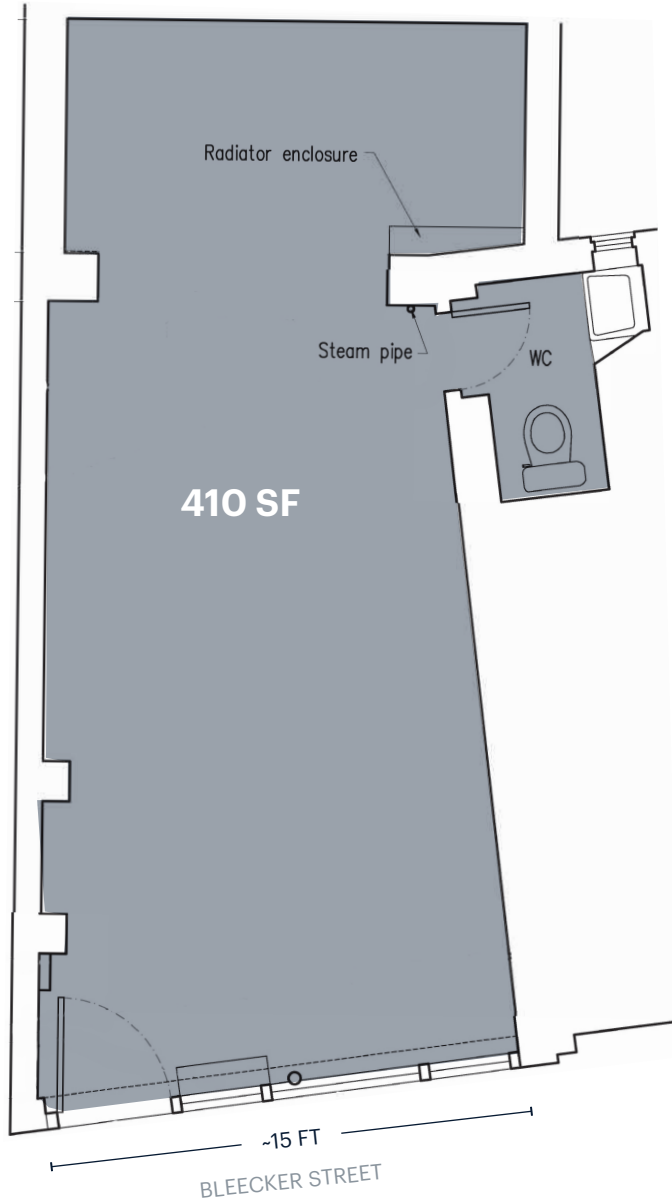
WEST VILLAGE

MANHATTAN | NEW YORK

RIPCO
REAL ESTATE

SPACE DETAILS

GROUND FLOOR



LOCATION

East block between Christopher and West 10th Streets

SIZE

Ground Floor 410 SF

CEILING HEIGHT

Ground Floor 9 FT 8 IN

FRONTAGE

Bleecker Street Approx. 15 FT

STATUS

Currently Goorin Brothers

POSSESSION

June 1st, 2024

RENT

Upon request

NEIGHBORS

Aesop, Buck Mason, Rains, Alexis Bittar, Anine Bing, Faherty, Jet Set, and Wyld Blue

COMMENTS

Small space on Bleecker Street
Great visibility on this block

TRANSPORTATION

2022 Ridership Report

Christopher Street

Annual	2,434,305
Weekday	6,826
Weekend	12,936

AREA RETAIL



CONTACT EXCLUSIVE AGENTS

RICHARD SKULNIK
 rskulnik@ripcony.com
 212.750.0756

LINDSAY ZEGANS
 lzegans@ripcony.com
 646.827.9962

BEN SABIN
 bsabin@ripcony.com
 646.290.2018

MARY SCHWAGERL
 mschwagerl@ripcony.com
 212.750.0756

+ Coming Soon