

325

LAFAYETTE

NOHO, NEW YORK CITY

STREET

THE PROPERTY

Located between East Houston and Bleecker Streets

Where prime location meets unparalleled exposure.

325 Lafayette Street presents a unique and highly visible dual frontage opportunity featuring storefronts on both Lafayette and Mulberry Streets.

Situated among NoHo's leading retailers and food & beverage concepts including KITH, On Running, GOOP, Reformation, J.Crew, Levain Bakery, Los Tacos #1, Bond Street Sushi, among others.



SPACE DETAILS



SIZE

Ground Floor 575 SF
Basement 755 SF
Total 1,330 SF

CEILING HEIGHTS

Ground Floor 11 FT 5 IN
Basement 9 FT 7 IN

FRONTAGE

Lafayette Street 19 FT
Mulberry Street 18 FT

POSSESSION

Immediate

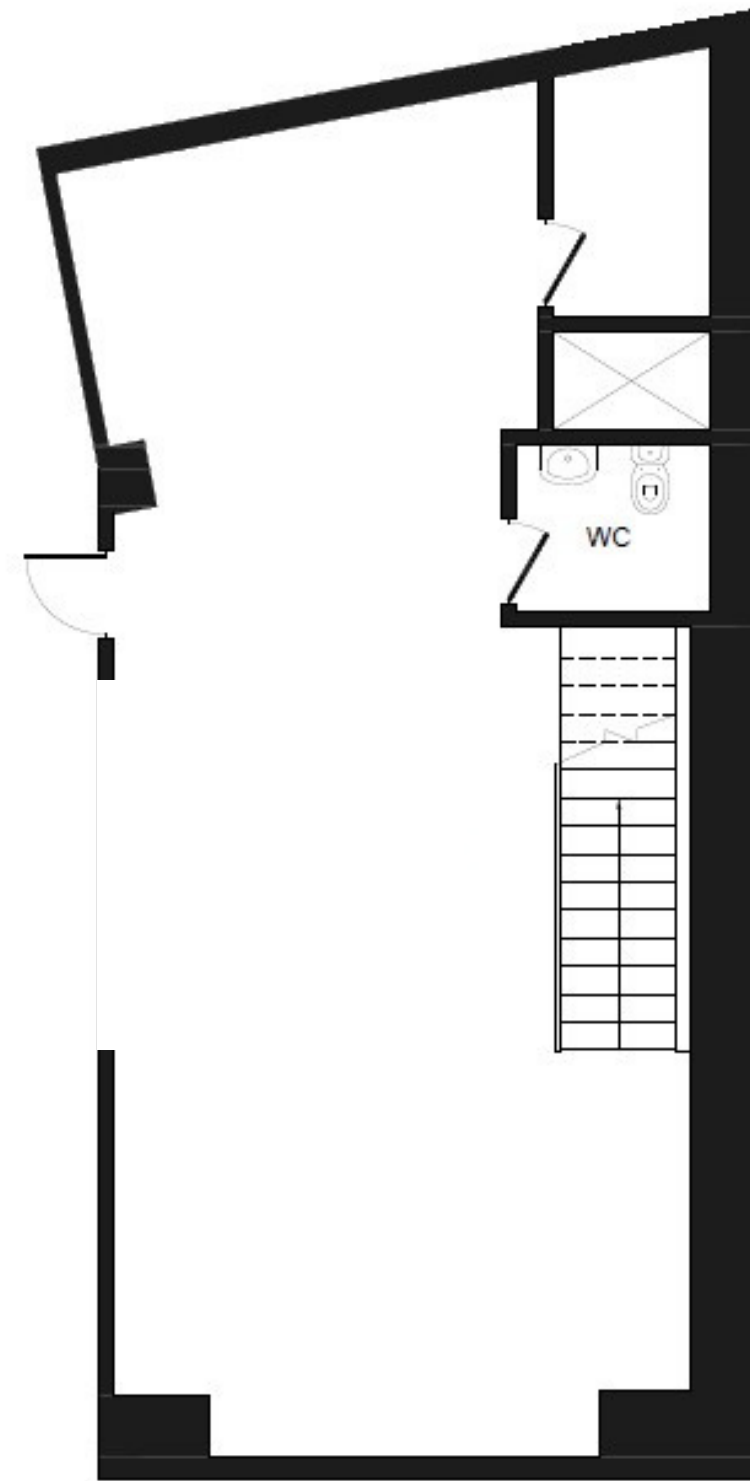
STATUS

Formerly Timbuk 2

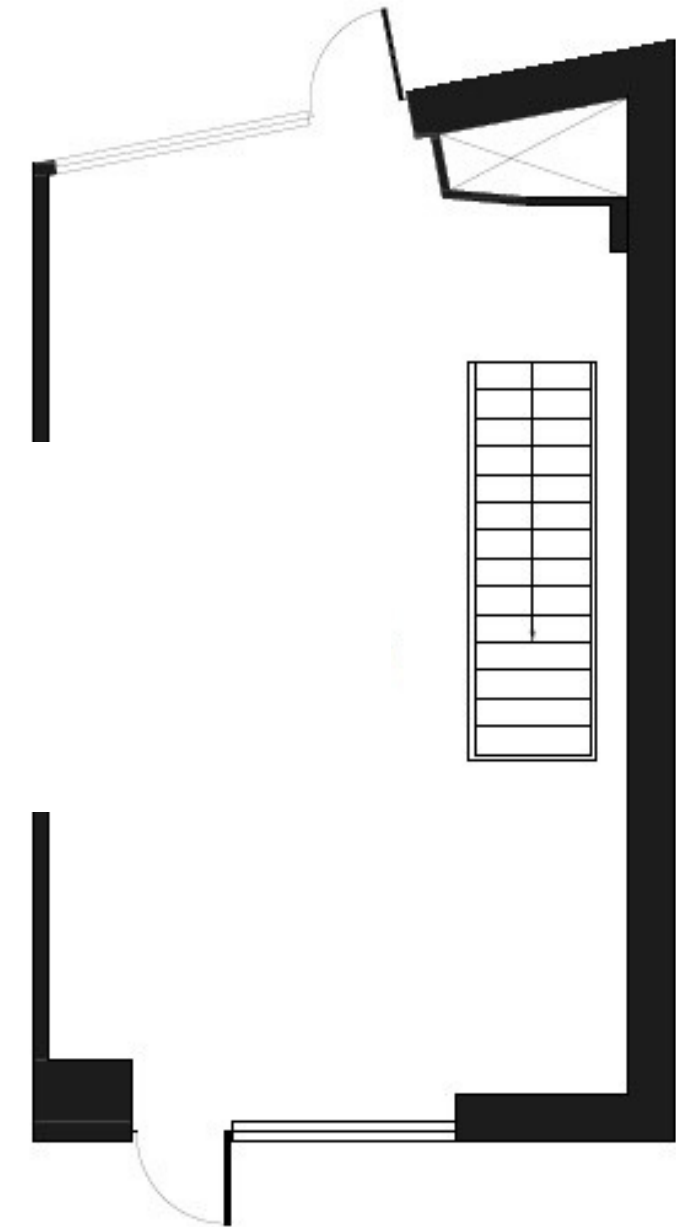
RENT

Upon Request

FLOOR PLANS



Cellar Plan



Ground Floor

THE NEIGHBORHOOD



CONTACT US

ZACH STEINBERG

ZSTEINBERG@RIPCONY.COM

212.750.2789

MORGAN SINGER

MSINGER@RIPCONY.COM

212.230.5884

RIPCO
REAL ESTATE

150 EAST 58TH STREET
15TH FLOOR
NEW YORK, NY 10155
212.750.6565

Please visit us at ripcony.com for more information

This information has been secured from sources we believe to be reliable, but we make no representations as to the accuracy of the information. References to square footage are approximate. Buyer must verify the information and bears all risk for any inaccuracies.