



## RETAIL SPACE

# LONG ISLAND CITY, NY

## SHOPS AT NORTHERN BOULEVARD

48-18 NORTHERN BOULEVARD

### SIZE

460 SF  
20,000 SF

### CO-TENANTS

Old Navy, Five Below, Chuck E. Cheese's, Marshalls, Raymour & Flanigan, H Mart, Guitar Center

### NEIGHBORS

Best Buy, David's Bridal, Home Depot, Food Bazaar, Michaels, Starbucks, BJ's Wholesale Club & Burlington

### COMMENTS

Free rooftop parking

At traffic light

## CONTACT EXCLUSIVE AGENT

**JEREMY ISAACS**

jisaacs@ripcony.com

516.933.8880

**RIPCO**  
REAL ESTATE

1000 Woodbury Road  
Suite 100  
Woodbury, NY 11797  
516.933.8880

Please visit us at [ripcony.com](http://ripcony.com) for more information

This information has been secured from sources we believe to be reliable, but we make no representations as to the accuracy of the information. References to square footage are approximate. Buyer must verify the information and bears all risk for any inaccuracies.



# MARKET AERIAL



SHOPS AT NORTHERN BOULEVARD LONG ISLAND CITY, NEW YORK







**SITE PLAN AERIAL**

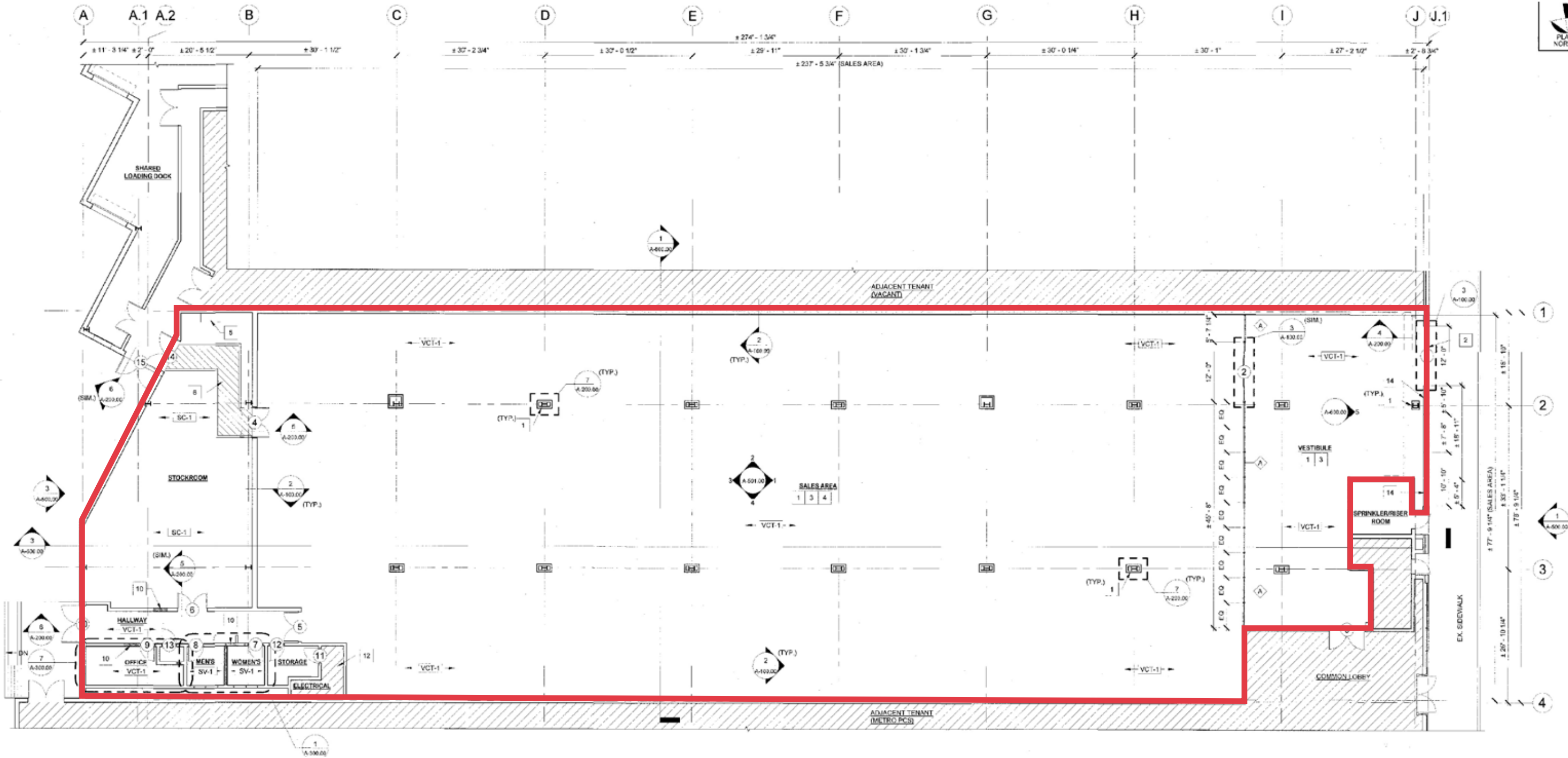




**SITE PLAN**



# FLOOR PLAN





# AREA DEMOGRAPHICS



SHOPS AT NORTHERN BOULEVARD LONG ISLAND CITY, NEW YORK

## 1 MILE RADIUS

**POPULATION**  
145,434

**HOUSEHOLDS**  
60,906

**AVERAGE HOUSEHOLD INCOME**  
\$102,490

**MEDIAN HOUSEHOLD INCOME**  
\$75,807

**COLLEGE GRADUATES (Bachelor's +)**  
50,798 - 46.0%

**TOTAL BUSINESSES**  
4,782

**TOTAL EMPLOYEES**  
51,317

**DAYTIME POPULATION (w/ 16 yr +)**  
126,220

## 2 MILE RADIUS

**POPULATION**  
469,541

**HOUSEHOLDS**  
186,343

**AVERAGE HOUSEHOLD INCOME**  
\$109,016

**MEDIAN HOUSEHOLD INCOME**  
\$77,499

**COLLEGE GRADUATES (Bachelor's +)**  
151,120 - 43.0%

**TOTAL BUSINESSES**  
14,159

**TOTAL EMPLOYEES**  
176,557

**DAYTIME POPULATION (w/ 16 yr +)**  
427,098

## 3 MILE RADIUS

**POPULATION**  
779,945

**HOUSEHOLDS**  
293,504

**AVERAGE HOUSEHOLD INCOME**  
\$112,497

**MEDIAN HOUSEHOLD INCOME**  
\$78,909

**COLLEGE GRADUATES (Bachelor's +)**  
227,640 - 40.0%

**TOTAL BUSINESSES**  
22,023

**TOTAL EMPLOYEES**  
288,201

**DAYTIME POPULATION (w/ 16 yr +)**  
708,444