

THE CABLE BUILDING

611 Broadway

SOHO | NOHO | GREENWICH VILLAGE



PROMINENCE IS POWER

40,217 Square Feet | NWC of Broadway & Houston Street





611 Broadway is an architecturally significant and visible property serving as the gateway to SoHo, NoHo & Greenwich Village with proven retail credentials.

This landmark location has been home to Crate & Barrel since 2002 and offers a rare opportunity to occupy a contiguous 40,217 SF space across 3 levels.

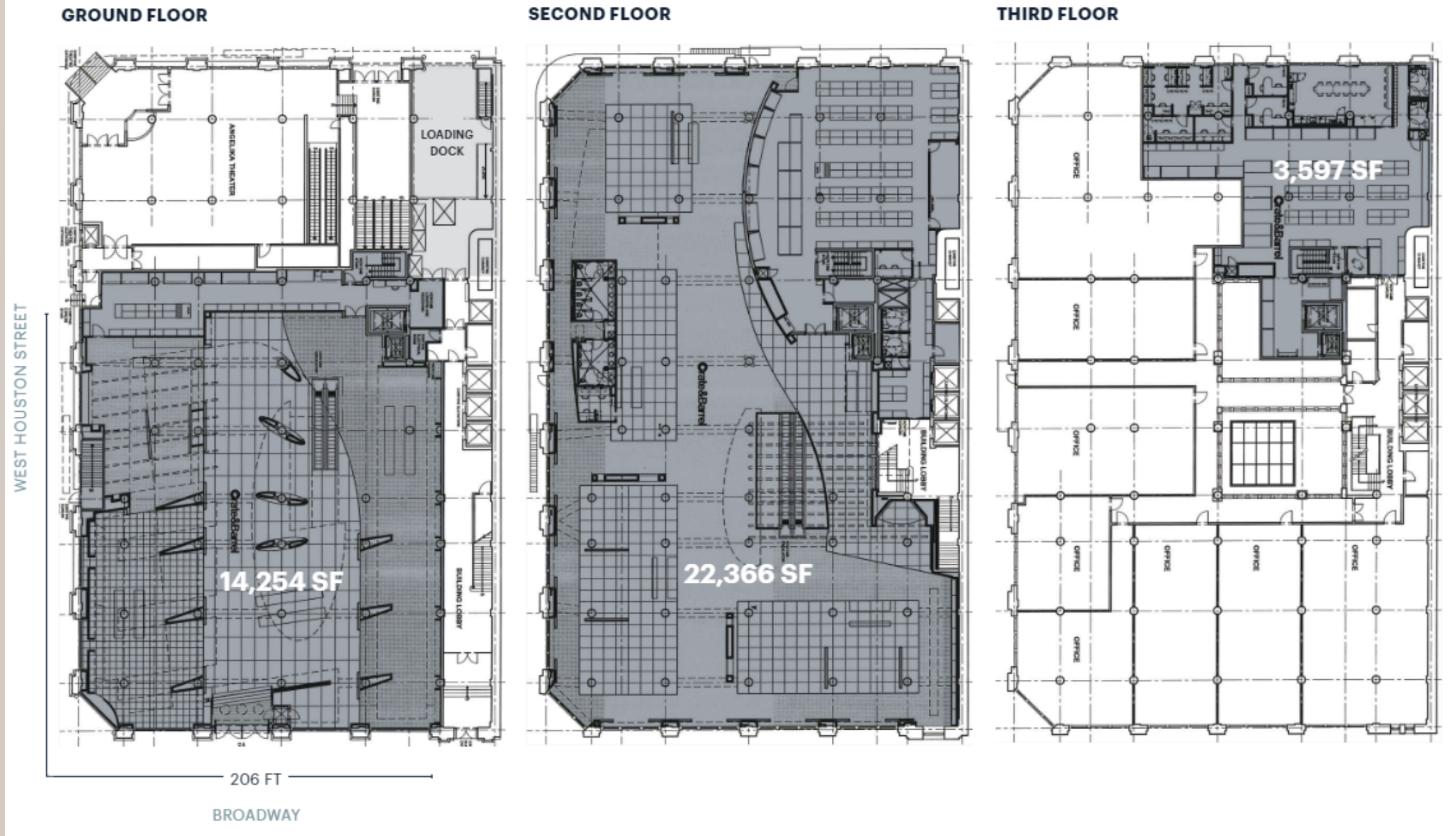
The premises was intelligently designed to deliver a highly functional and well designed retail space.

An unrivaled opportunity for world-class brands seeking an iconic presence.



FIRST TIME ON THE MARKET

611 Broadway - The Cable Building



SIZE

Ground Floor	14,254 SF
Second Floor	22,366 SF
Third Floor	3,597 SF
Total	40,217 SF

FRONTAGE
206 FT Wraparound Corner

CEILING HEIGHTS

Ground Floor	16 FT
Second Floor	14 FT
Third Floor	13 FT

STATUS
Currently Crate & Barrel

POSSESSION
Q1 2024

RENT
Upon Request

FLOOR PLANS

PROPERTY HIGHLIGHTS



Fusion of adaptable modern retail infrastructure & the heritage of one of New York's most stunning commercial buildings

Situated at one of Manhattan's most important retail intersections at Broadway & Houston Street

Highly functional well designed retail premises; existing escalator, passenger elevator, and dedicated interior freight elevator

Direct access to off-street loading dock on Mercer Street

BE AMONG THE BEST IN CLASS

PRADA

ZARA

LV


MONCLER

SEPHORA

KITH



ARITZIA



MANGO


adidas

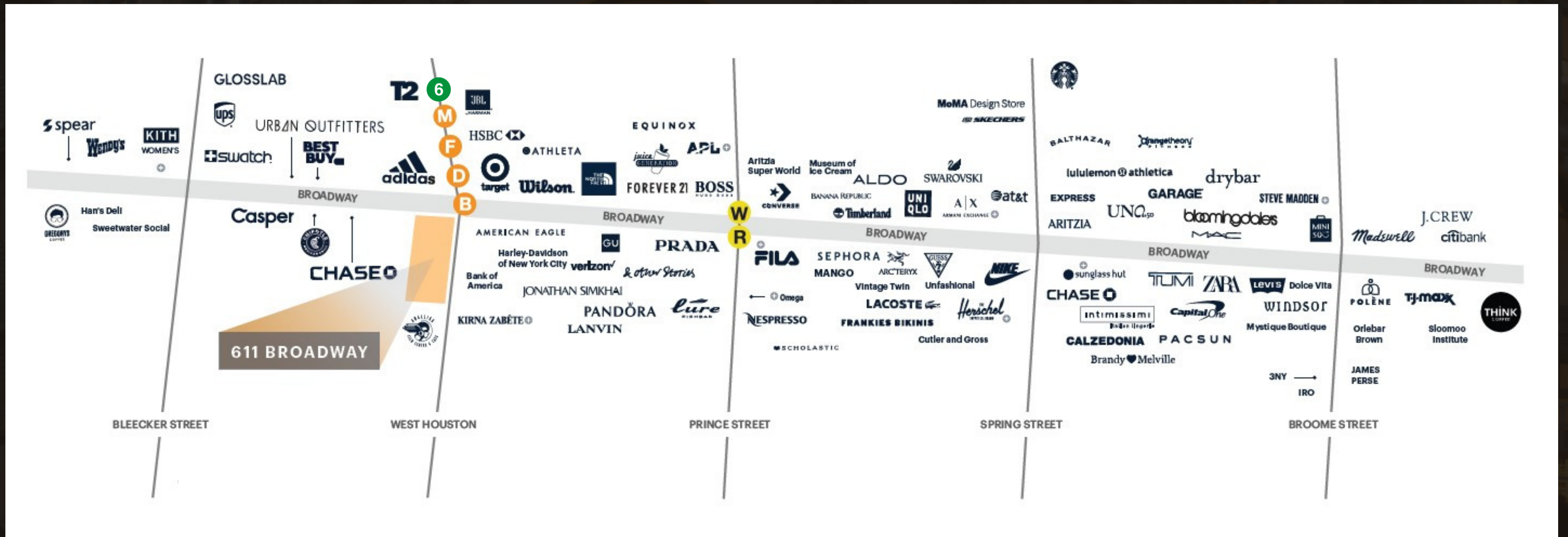
URBAN
OUTFITTERS

H&M

THE
NORTH
FACE 


TARGET

AREA RETAIL MAP



THE NEIGHBORHOOD



120K
Total Daytime Population

SUBWAY RIDERSHIP



*BROADWAY-LAFAYETTE/
BLEECKER STREET*

AVERAGE WEEKDAY 15,578
AVERAGE WEEKEND 24,488
TOTAL ANNUAL 5,274,947



PRINCE STREET

AVERAGE WEEKDAY 4,790
AVERAGE WEEKEND 12,011
TOTAL ANNUAL 1,864,902



\$173K
Average Household Income

\$1.2B+
Annual Retail Sales



611 Broadway

SOHO | NOHO | GREENWICH VILLAGE

Contact Exclusive Agents

GENE SPIEGELMAN

GSPIEGELMAN@RIPCONY.COM

212.750.2090

MORGAN SINGER

MSINGER@RIPCONY.COM

212.230.5884

ZACH STEINBERG

ZSTEINBERG@RIPCONY.COM

212.750.2789

PETER RIPKA

PRIPKA@RIPCONY.COM

212.750.2030

RIPCO
REAL ESTATE

150 EAST 58TH STREET
15TH FLOOR
NEW YORK, NY 10155
212.750.6565

Please visit us at ripcony.com for more information

This information has been secured from sources we believe to be reliable, but we make no representations as to the accuracy of the information. References to square footage are approximate. Buyer must verify the information and bears all risk for any inaccuracies.