

RESTAURANT/RETAIL/MEDICAL/OFFICE

30-07 ASTORIA BOULEVARD

Between 31st and 29th Streets

ASTORIA

QUEENS | NEW YORK

2,110 SF

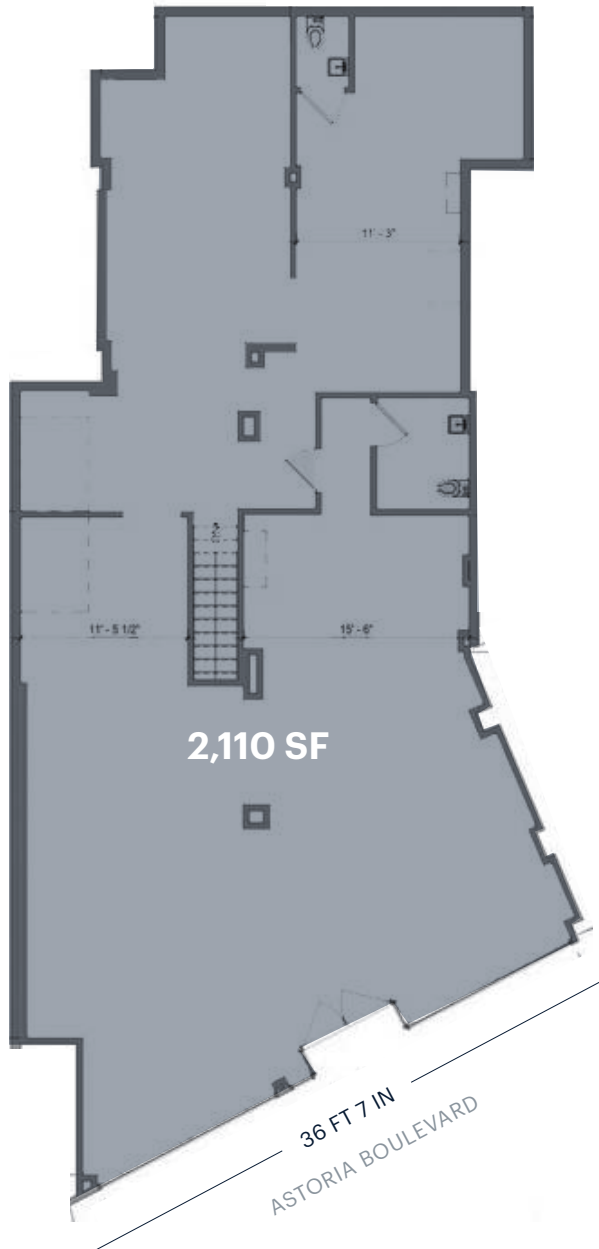
For Lease



RIPCO
REAL ESTATE

SPACE DETAILS

GROUND FLOOR



LOCATION

Between 31st and 29th Streets

SIZE

Ground Floor 2,110 SF

FRONTAGE

Astoria Boulevard 36 FT 7 IN

CEILING HEIGHT

Ground Floor 11 FT

STATUS

Formerly Boulevard Bagel Cafe

POSSESSION

Immediate

TERM

Negotiable

RENT

Upon request

NEIGHBORS

Starbucks, Dunkin Donuts, SVL BAR, Neptune Diner, Basil Brick Oven Pizza, and Staples

COMMENTS

Former Boulevard Bagel Cafe with restaurant infrastructure in place (natural gas and venting)

Nearby Astoria Blvd (N,W) subway stop with 2,182,362 annual ridership

Large frontage on Astoria Boulevard

Perfect for bagel shop, cafe, pizzeria, restaurant, medical offices

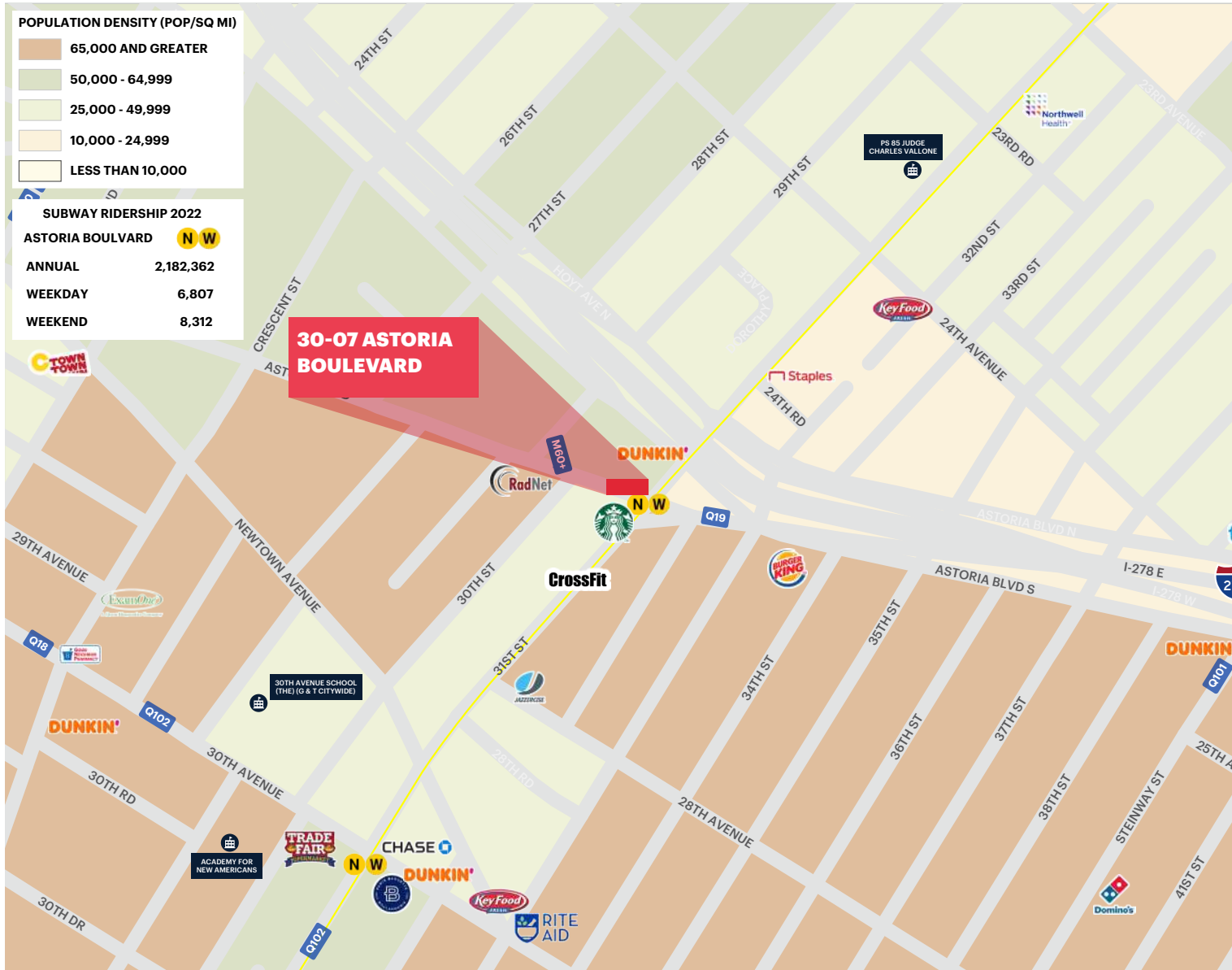
Logical division considered

TRANSPORTATION

2022 Ridership Report

Astoria Boulevard	N W
Annual	2,182,362
Weekday	6,807
Weekend	8,312

AREA RETAIL



CONTACT EXCLUSIVE AGENTS

BENJAMIN WEINER
 bweiner@ripcony.com
 646.827.1442

CHRISTOPHER WALTHER
 cwalther@ripcony.com
 646.827.9964

+ Coming Soon



32 Court Street
 10th Floor
 Brooklyn, NY 11201
 718.233.6565.

Please visit us at ripcony.com for more information

This information has been secured from sources we believe to be reliable, but we make no representations as to the accuracy of the information. References to square footage are approximate. Buyer must verify the information and bears all risk for any inaccuracies.