

**BIG BOX/FITNESS/FREESTANDING/MEDICAL/QSR/RESTAURANT/STREET RETAIL**

# 892-908 FLATBUSH AVENUE

Between Church and Snyder Avenues

**FLATBUSH**

BROOKLYN | NY

Up to  
**12,729 SF\***  
For Lease  
\*Divisible

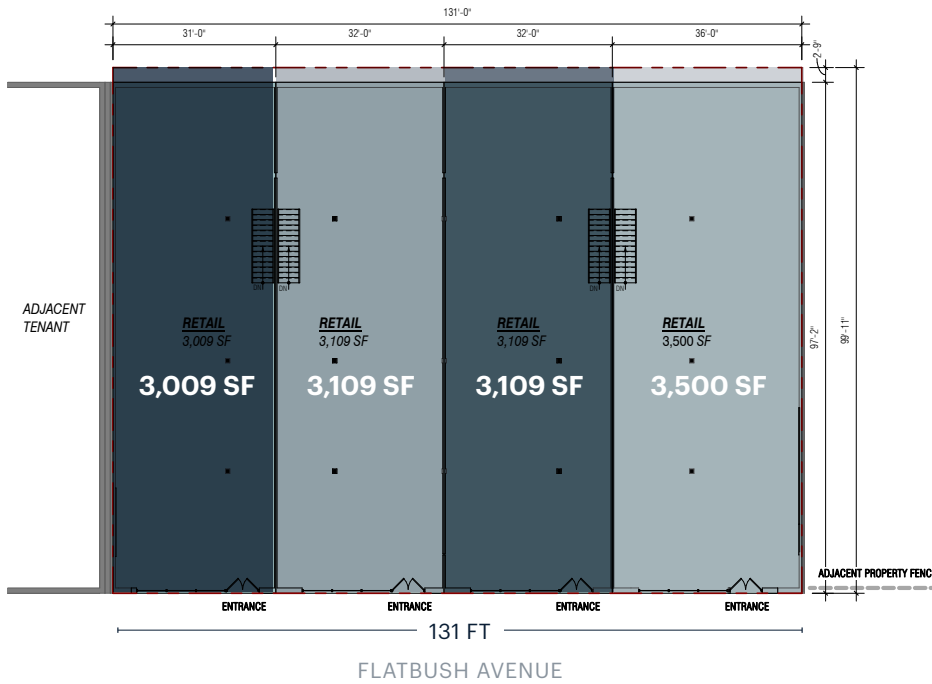


ARTIST'S RENDERING

**RIPCO**  
REAL ESTATE

# SPACE DETAILS

## GROUND FLOOR - MULTI-TENANT



### LOCATION

West side of Flatbush Avenue  
between Church and Snyder  
Avenues

### SIZE

Ground Floor 12,729 SF\*  
Lower Level 12,683 SF\*  
\*Divisible

### FRONTAGE

Flatbush Avenue 131 FT

### STATUS

Formerly Rite Aid

### POSSESSION

Arranged

### TERM

Long term

### RENT

Upon request

### NEIGHBORS

Target, Foot Locker, CVS, Chase  
Bank, Citi Bank, Jimmy Jazz, Snipes,  
Five Below

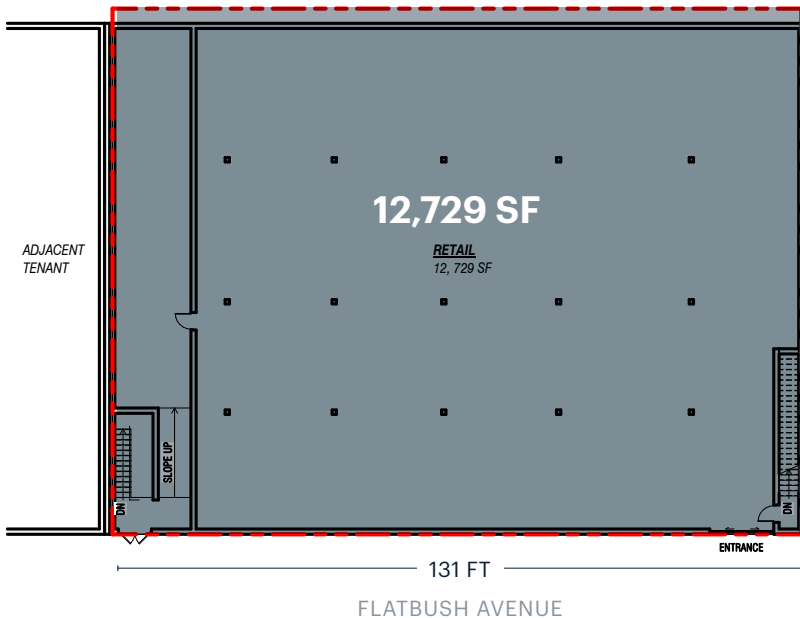
### COMMENTS

Divisible

Venting possible

Full basement for storage

## GROUND FLOOR - SINGLE TENANT



### TRANSPORTATION

2022 Ridership Report

Church Avenue **B Q**  
Annual 9,755  
Weekday 9,783  
Weekend 3,024,750

Church Avenue **2 5**  
Annual 7,110  
Weekday 6,004  
Weekend 1,917,284

## AREA RETAIL



## CONTACT EXCLUSIVE AGENTS

**ABRAHAM R. DAYAN**  
adayan@ripcony.com  
212.230.5886

**BEN WEINER**  
bweiner@ripcony.com  
718.233.6565

**RIPCO**  
REAL ESTATE

32 Court Street  
10th Floor  
Brooklyn, NY 11201  
718.233.6565

Please visit us at [ripcony.com](http://ripcony.com) for more information

This information has been secured from sources we believe to be reliable, but we make no representations as to the accuracy of the information. References to square footage are approximate. Buyer must verify the information and bears all risk for any inaccuracies.