

FREESTANDING/STREET RETAIL/RESTAURANT-PERMITTED

527-533 FIFTH AVENUE

Northeast corner of 14th Street

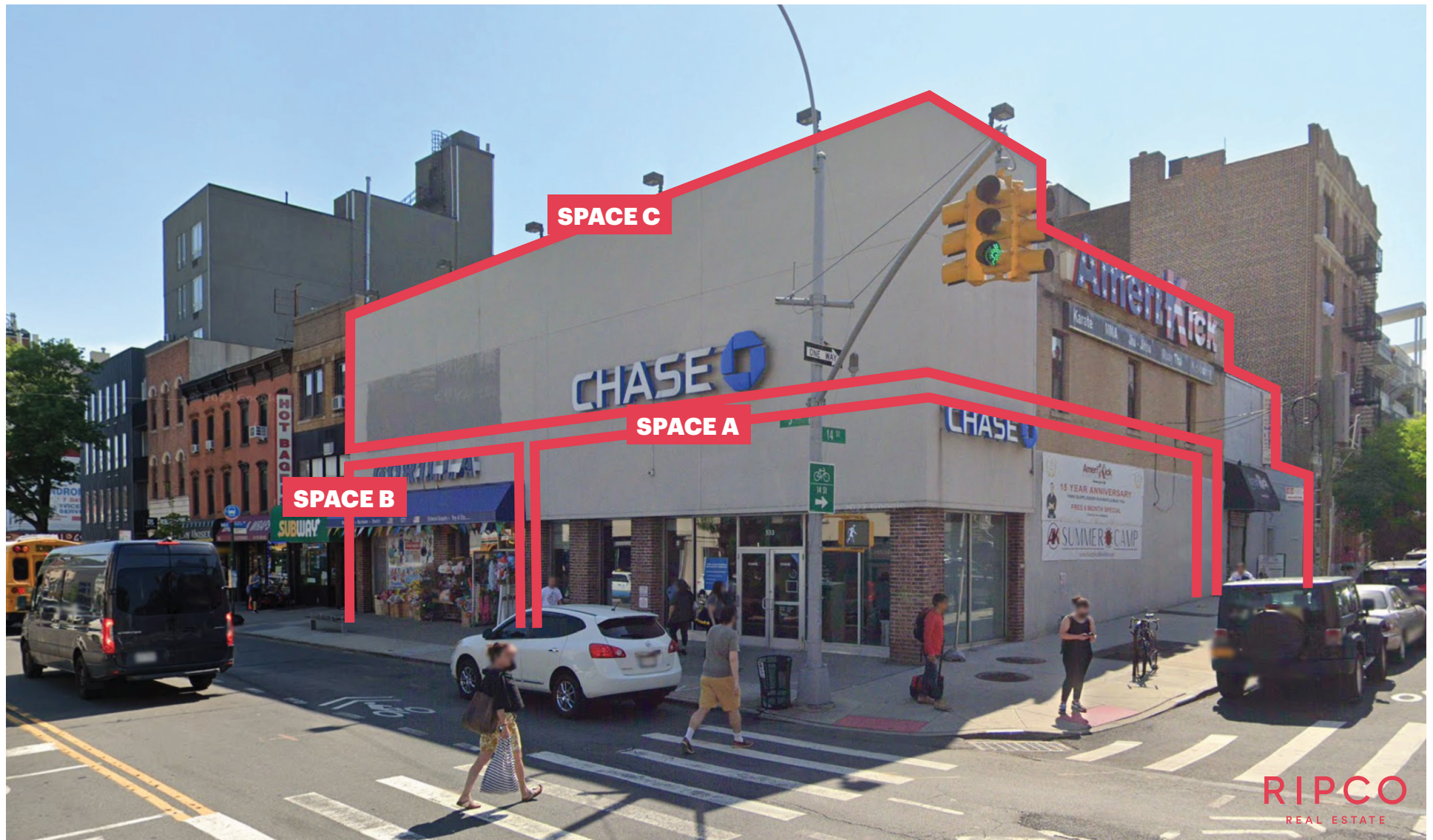
PARK SLOPE

BROOKLYN | NY

Up to
7,340 SF*

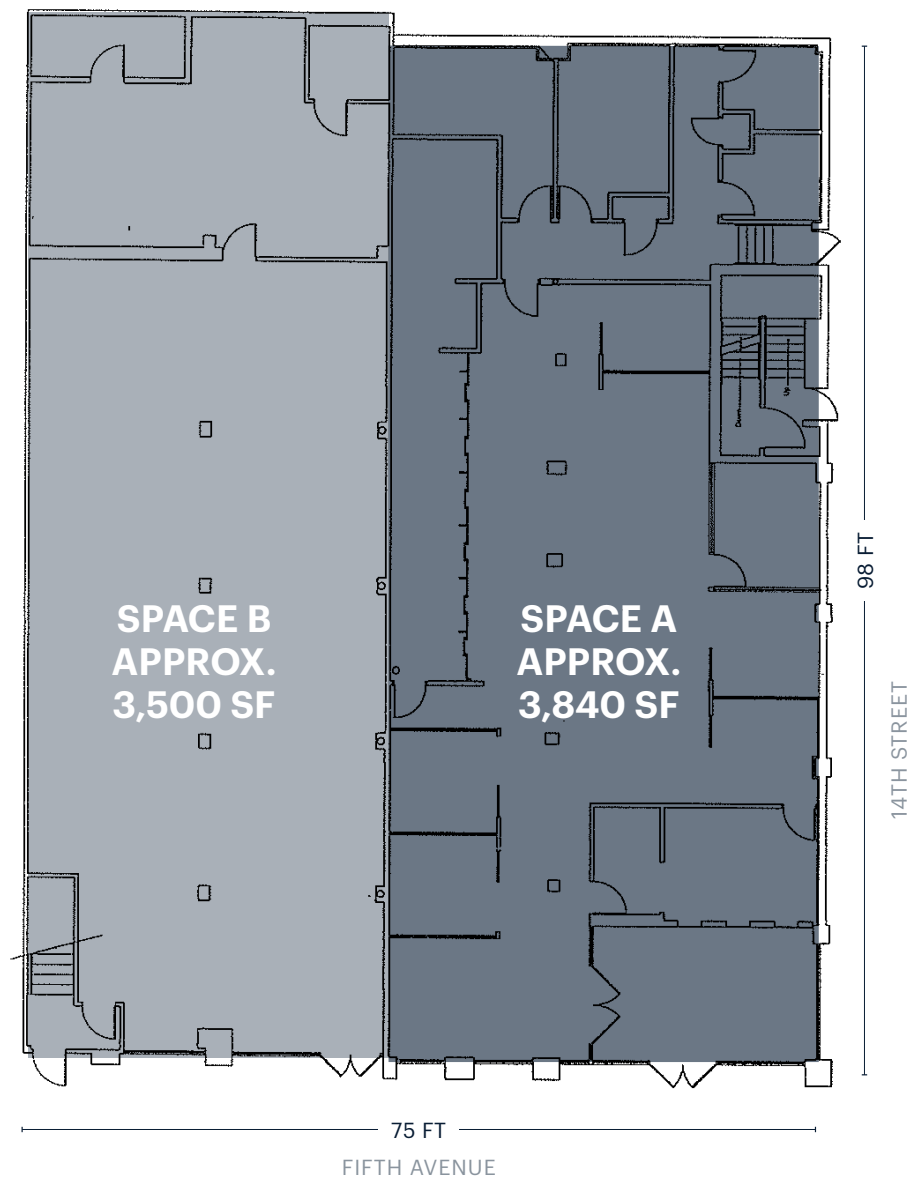
For Lease

**Divisible*



SPACE DETAILS

GROUND FLOOR



LOCATION

Northeast corner of 14th Street and Fifth Avenue

SIZE - APPROXIMATELY

Space A - Corner

Ground Floor 3,840 SF

Space B - Inline

Ground Floor 3,500 SF

Lower Level 5,250 SF

Space C - Second Floor

Second Floor 3,500 SF

Total

Ground Floor 7,340 SF

Lower Level 5,250 SF

Second Floor 3,500 SF

FRONTAGE

Fifth Avenue 75 FT

14th Street 98 FT

POSSESSION

January 2024

TERM

Long Term

STATUS

Space A - Corner

Currently Chase Bank

Space B - Inline

Currently Gorilla

Space C - Second Floor

Amerikick

RENT

Upon request

NEIGHBORS

Walgreens, Harbor Fitness, Mattress Firm, Good Day Play Cafe, Buttermilk Bar, Good Judy, Brooklyn Apple Academy, Subway, Spectrum

COMMENTS

Can combine for 7,340 SF ground with 5,250 SF basement

Very visible corner with exceptional branding opportunity

All quality uses considered

Close proximity to subway and buses

Solid opportunity for fitness, medical, restaurant, QSR, and financial uses

TRANSPORTATION

2022 Ridership Report

4th Avenue/
9th Avenue

Annual 2,559,111
Weekday 7,980
Weekend 9,812



B61

Annual 1,825,065
Weekday 5,735
Weekend 6,719



B63

Annual 2,463,594
Weekday 7,464
Weekend 10,354



This information has been secured from sources we believe to be reliable, but we make no representations as to the accuracy of the information. References to square footage are approximate. Buyer must verify the information and bears all risk for any inaccuracies.