

RETAIL SPACE

LEVITTOWN, NY

3695 - 3721 HEMPSTEAD TURNPIKE

ARTIST'S RENDERING FRONT OF PROPERTY



SIZE

1,350 SF to 10,000 SF
Spaces can be combined

ASKING RENT

Upon request

CO-TENANTS

Mathnasium, Capital One Bank

NEIGHBORS

Target, AMC, Kohl's, PetSmart, BJ's Wholesale Club, LA Fitness, Ulta, Best Buy, Michaels, DSW, Old Navy, Five Below, Chipotle, Party City, FedEx Office, Chase Bank

COMMENTS

100+ car parking lot located behind the shopping center

50,000 vehicles per day

Dedicated traffic light

Conveniently located directly on Hempstead Turnpike (NY-24) and Wantagh Avenue

Situated next to Nassau Mall

CONTACT EXCLUSIVE AGENTS

JASON SOBEL

jsobel@ripcony.com
516.933.8880

JULIANA CHIARELLI

jchiarelli@ripcony.com
516.933.8880

RIPCO
REAL ESTATE

1000 Woodbury Road
Suite 100
Woodbury, NY 11797
516.933.8880

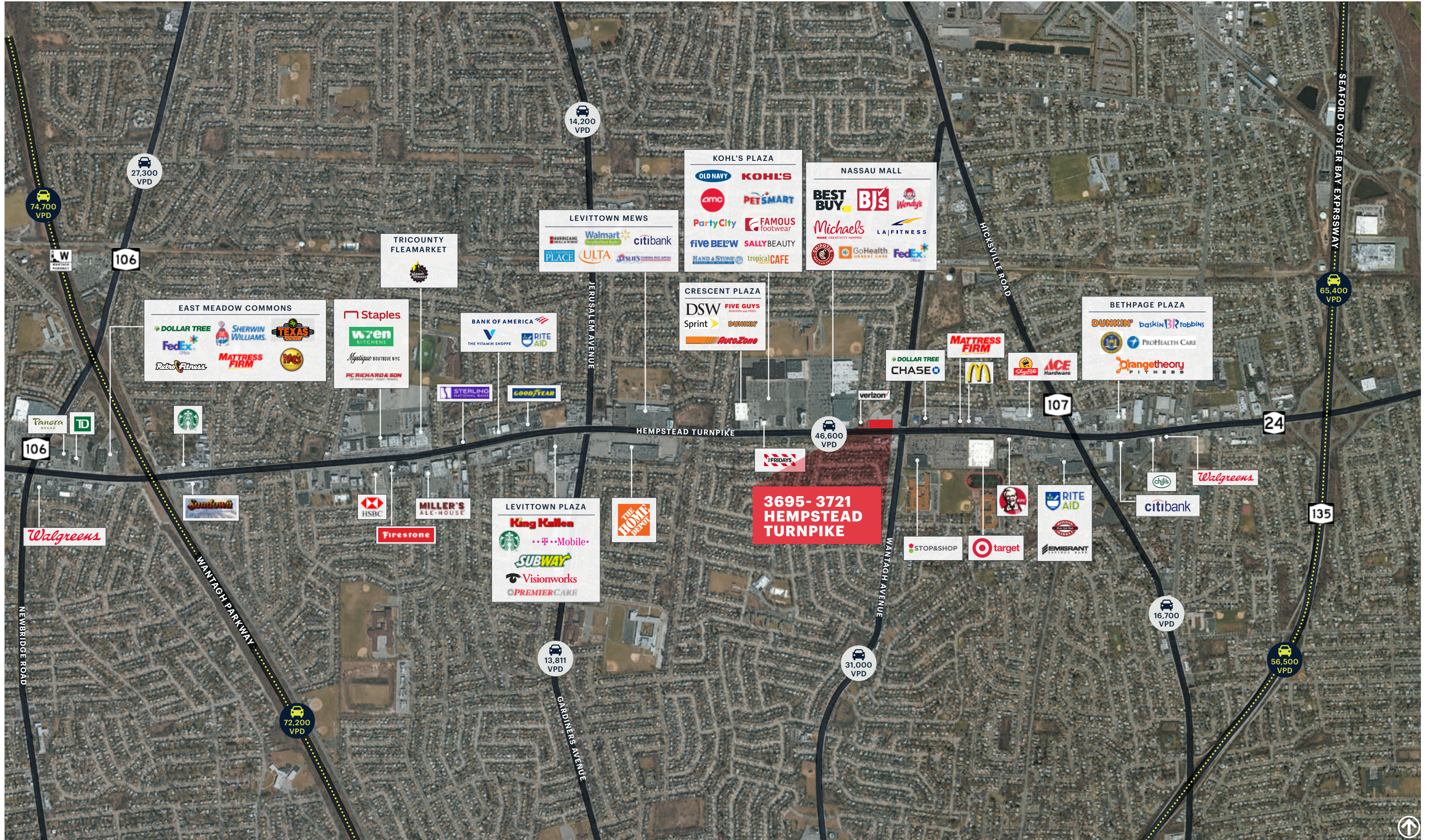
Please visit us at ripcony.com for more information

This information has been secured from sources we believe to be reliable, but we make no representations as to the accuracy of the information. References to square footage are approximate. Buyer must verify the information and bears all risk for any inaccuracies.

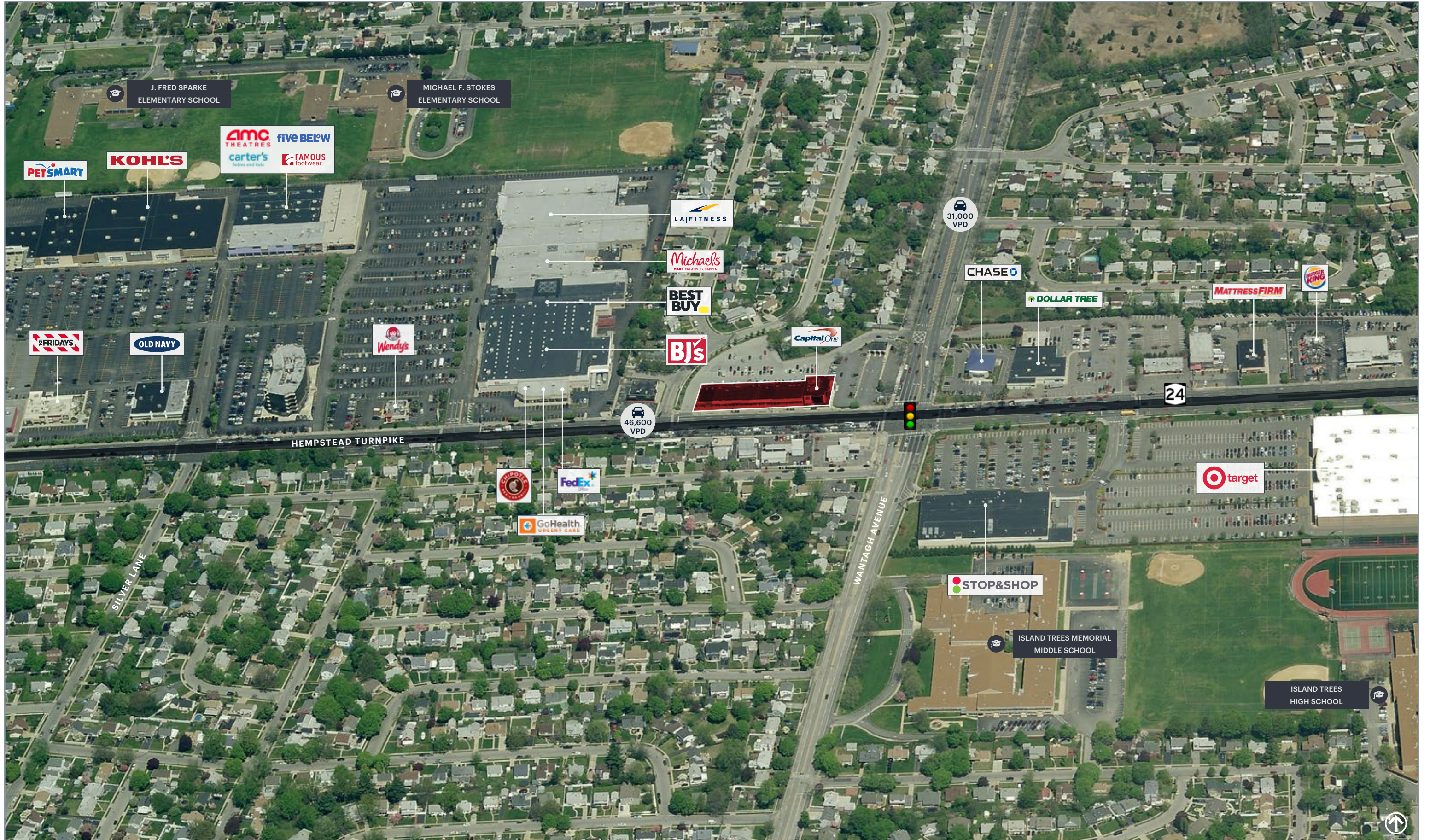
CLOSE-UP AERIAL



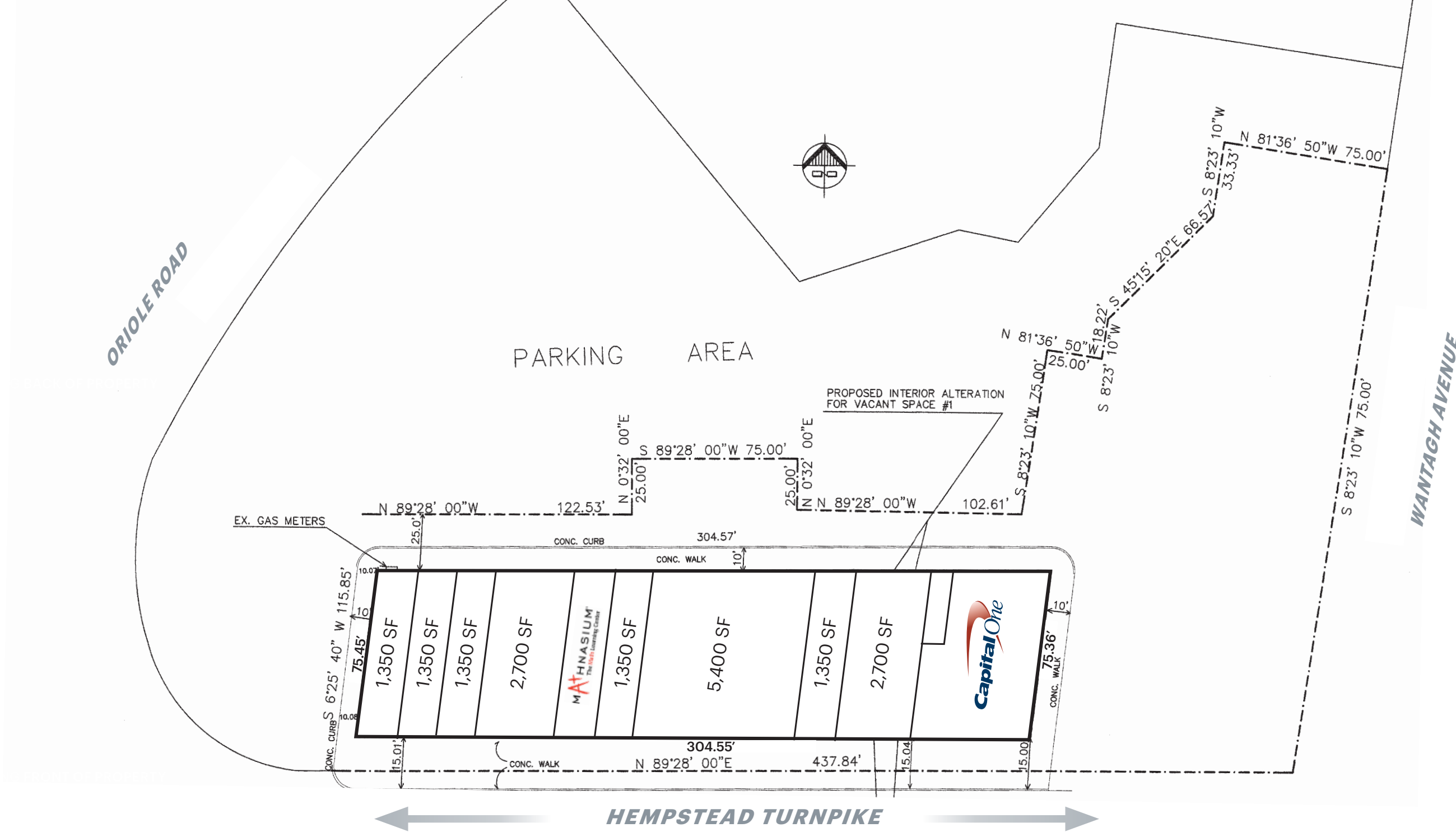
MARKET AERIAL



MID-LEVEL AERIAL



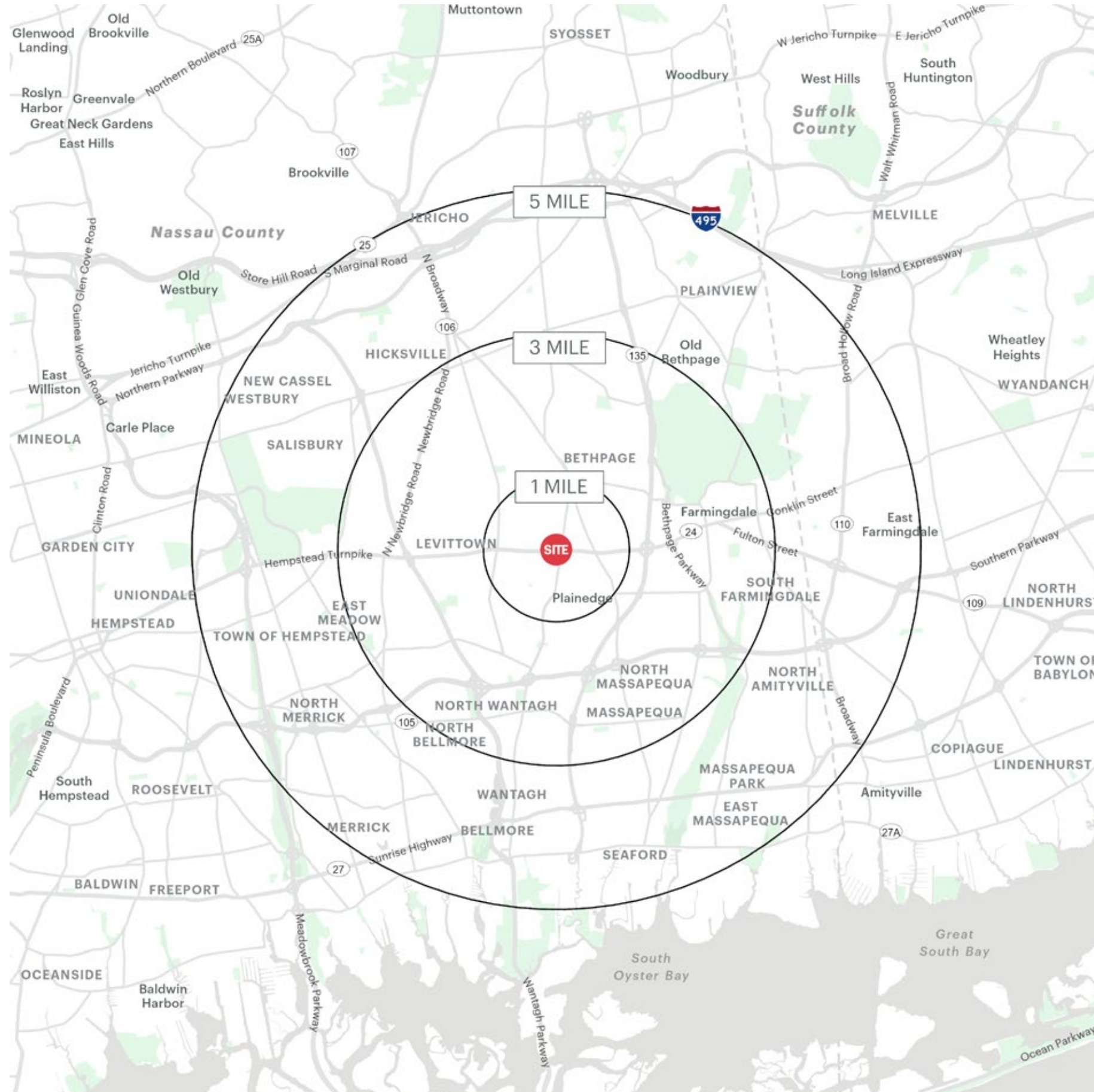
SURVEY



PROPERTY PHOTOS



AREA DEMOGRAPHICS



3695 - 3721 HEMSPTAD TURNPIKE LEVITTOWN, NEW YORK

1 MILE RADIUS

POPULATION

22,815

HOUSEHOLDS

7,450

AVERAGE HOUSEHOLD INCOME

\$164,359

MEDIAN HOUSEHOLD INCOME

\$129,261

COLLEGE GRADUATES (Bachelor's +)

6,305 - 37.0%

TOTAL BUSINESSES

622

TOTAL EMPLOYEES

7,025

DAYTIME POPULATION (w/ 16 yr +)

17,506

3 MILE RADIUS

POPULATION

177,720

HOUSEHOLDS

58,531

AVERAGE HOUSEHOLD INCOME

\$164,169

MEDIAN HOUSEHOLD INCOME

\$130,218

COLLEGE GRADUATES (Bachelor's +)

58,215 - 44.0%

TOTAL BUSINESSES

5,145

TOTAL EMPLOYEES

48,598

DAYTIME POPULATION (w/ 16 yr +)

131,463

5 MILE RADIUS

POPULATION

442,728

HOUSEHOLDS

143,661

AVERAGE HOUSEHOLD INCOME

\$172,291

MEDIAN HOUSEHOLD INCOME

\$133,316

COLLEGE GRADUATES (Bachelor's +)

152,009 - 47.0%

TOTAL BUSINESSES

17,892

TOTAL EMPLOYEES

188,872

DAYTIME POPULATION (w/ 16 yr +)

402,537

AREA DEMOGRAPHICS

