

COMMUNITY FACILITY/FITNESS/NEW DEVELOPMENT/STREET RETAIL

69 EAST 125TH STREET

Between Park and Lexington Avenues

HARLEM

MANHATTAN | NY

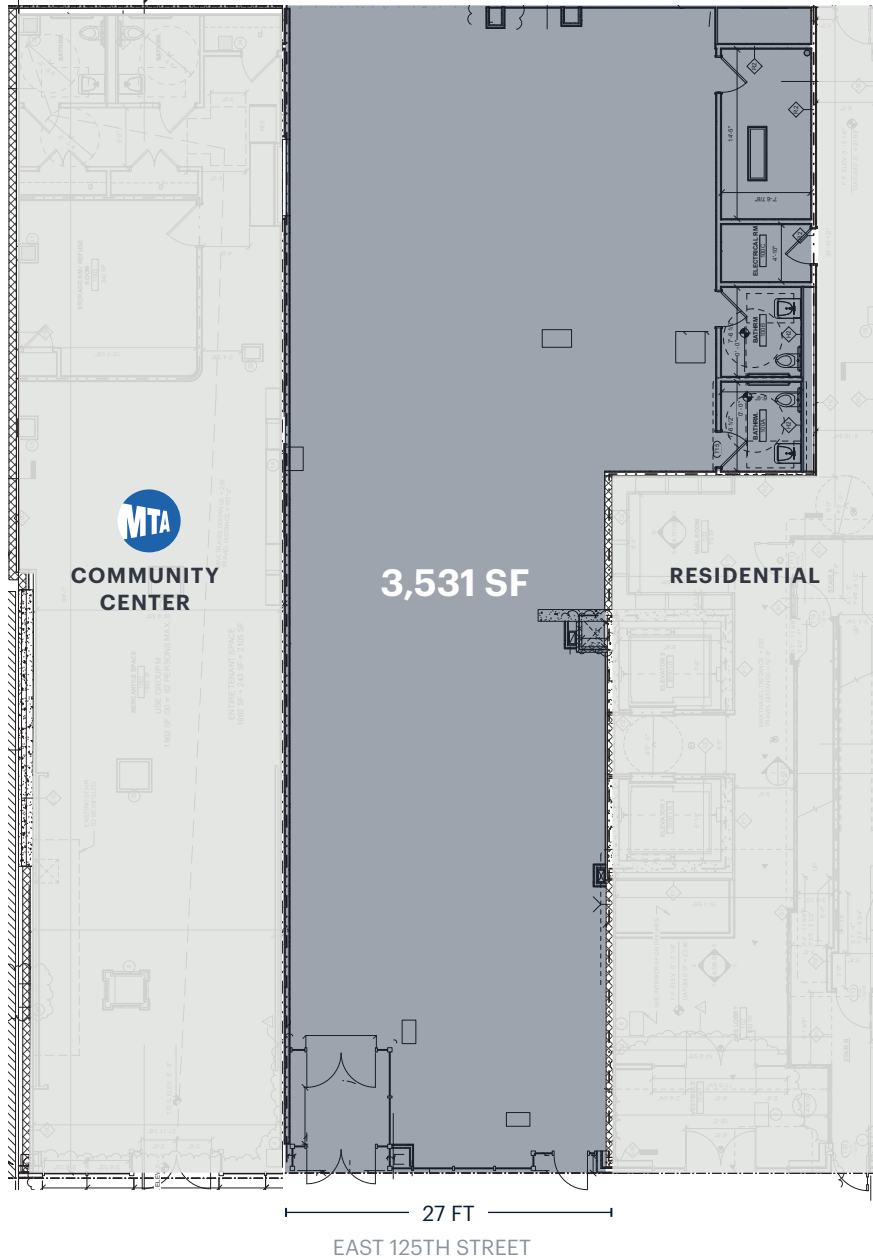
3,531 SF

For Lease



SPACE DETAILS

GROUND FLOOR



LOCATION

Between Park and Lexington Avenues

SIZE

Ground Floor 3,531 SF

FRONTAGE

East 125th Street 27 FT

CEILING HEIGHTS

Ground Floor 11 FT 2 IN

STATUS

Currently new construction

POSSESSION

Immediate

TERM

Long term

RENT

Asking \$95 PSF

NEIGHBORS

Shake Shack, Ginjan Cafe, National Black Theater, Dunkin Donuts, Wine Pantry, New York College of Podiatric Medicine, Harlem Children's Zone

COMMENTS

All quality non-food uses considered (no dispensaries)
Excellent retail, fitness, medical or education opportunity in Central Harlem

TRANSPORTATION

2022 Ridership Report

125th Street	4 5 6
Annual	4,475,736
Weekday	14,398
Weekend	14,872

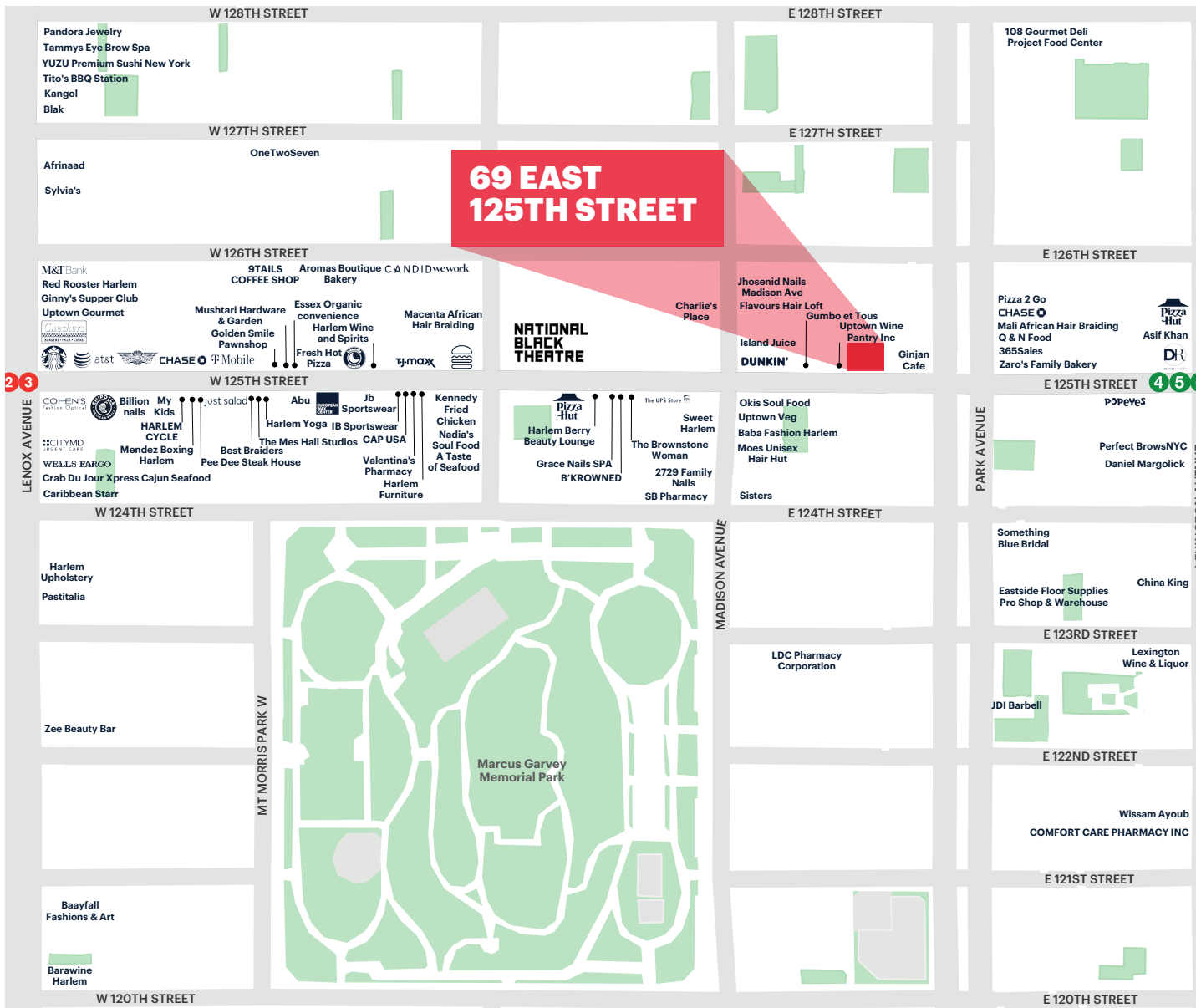
125th Street
Annual Riders

MTA Metro-North
Railroad
49 Million

ADDITIONAL PHOTOS



AREA RETAIL



CONTACT EXCLUSIVE AGENTS

JASON PENNINGTON
 jpennington@ripcony.com
 212.750.6565

JESSICA HEDRINGTON
 jhedrington@ripcony.com
 212.750.6565