

**FITNESS/MEDICAL/STREET RETAIL**

# 166 SMITH STREET

Southwest corner of Smith and Wyckoff Streets

**BOERUM HILL**

BROOKLYN | NY

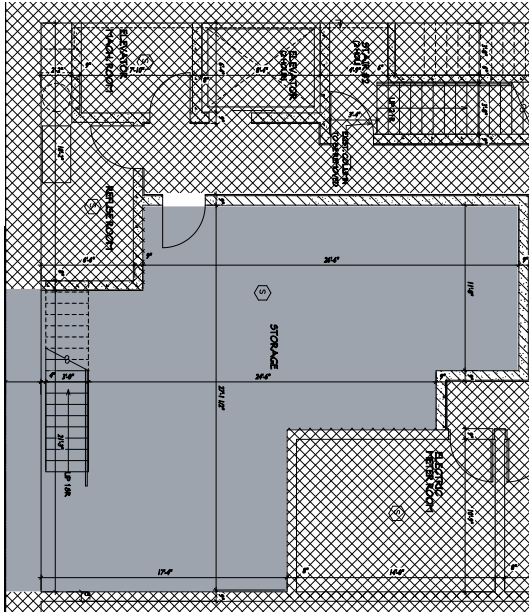
**2,700 SF**

For Lease

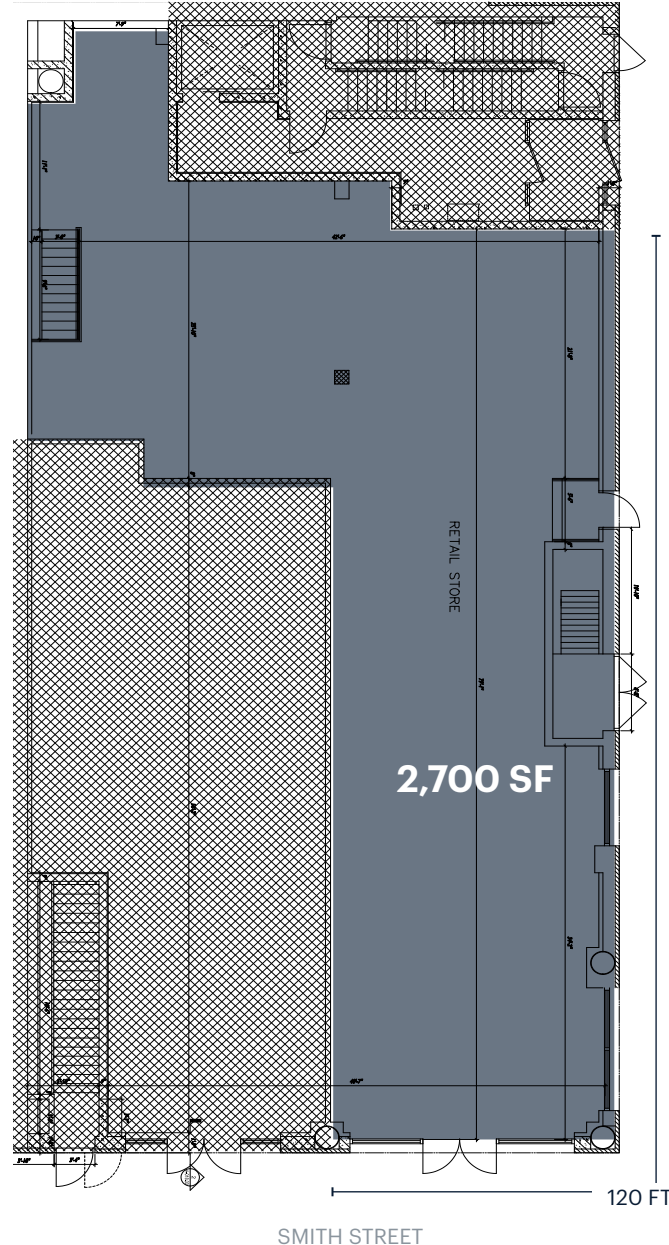


# SPACE DETAILS

## LOWER LEVEL



## GROUND FLOOR



## LOCATION

Southwest corner of Smith and Wyckoff Streets

## SIZE

Ground Floor 2,700 SF

Lower Level included

## FRONTAGE

Wraparound on Smith and Wyckoff Streets 120 FT

## CEILING HEIGHT

15 FT

## ASKING RENT

Upon request

## STATUS

Currently Lululemon

## POSSESSION

Q1 2024

## TERM

Long term

## NEIGHBORS

Books Are Magic, Malin + Goetz, Bar Tabac, Free People, Something Else, Starbucks, Papersource, Dr. Martens, Glow Bar, Paisanos Butcher

## COMMENTS

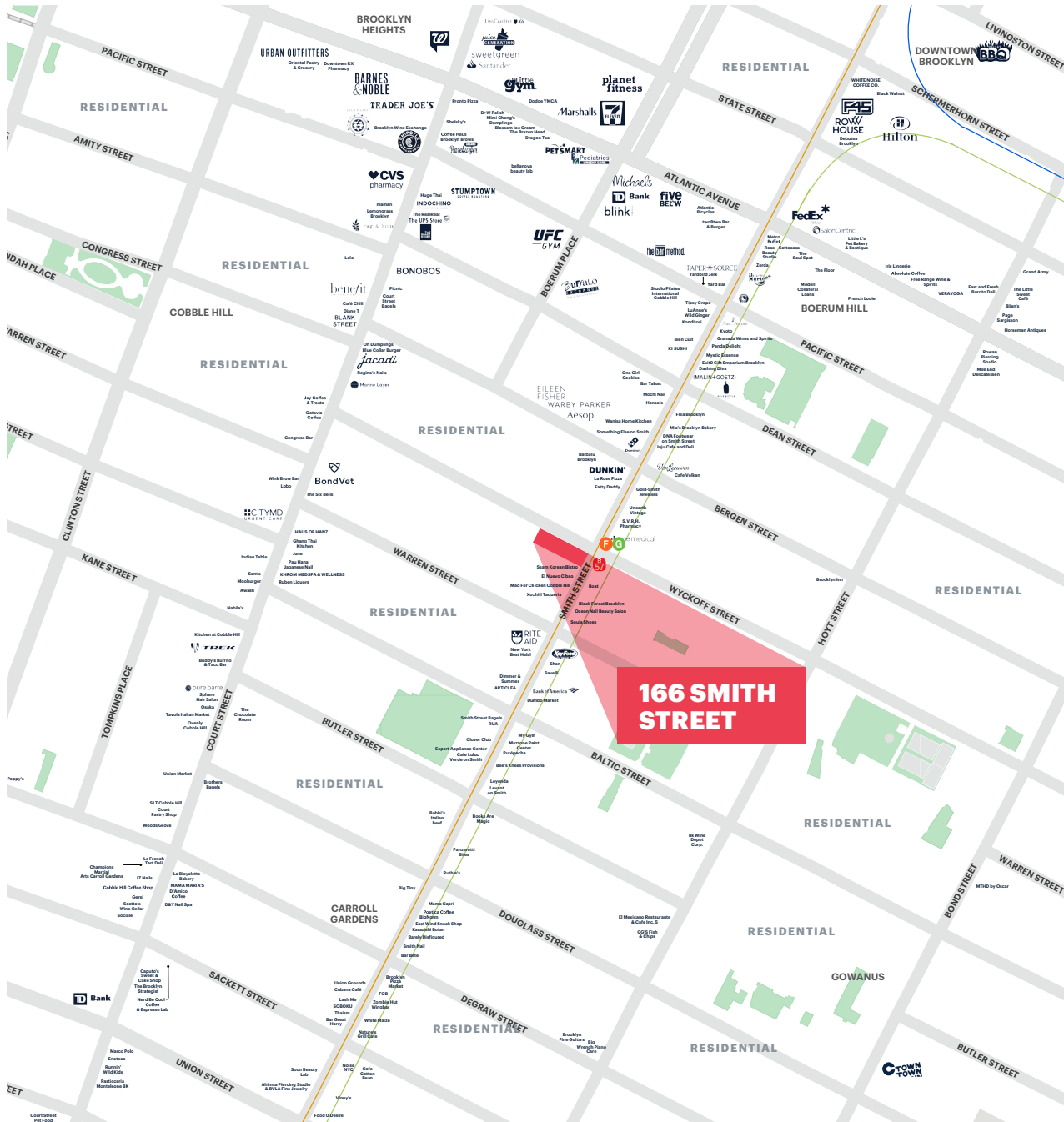
Premiere Smith Street corner in the heart to boutique and restaurant row

120 FT wraparound frontage

All quality, non-food uses accepted

No dispensaries please

# AREA RETAIL



## TRANSPORTATION

2021 Ridership Report

**Bergen Street** F G  
 Annual 1,602,668  
 Weekday 5,011  
 Weekend 6,092

**B57** B 57  
 Annual 2,181,338  
 Weekday 6,837  
 Weekend 8,109

## CONTACT EXCLUSIVE AGENT

**JASON PENNINGTON**  
 jpennington@ripcony.com  
 718.233.6565

**RIPCO**  
 REAL ESTATE  
 32 Court Street  
 10th Floor  
 Brooklyn, NY 11201  
 718.233.6565

Please visit us at [ripcony.com](http://ripcony.com) for more information

This information has been secured from sources we believe to be reliable, but we make no representations as to the accuracy of the information. References to square footage are approximate. Buyer must verify the information and bears all risk for any inaccuracies.