

RETAIL SPACE

WESTFIELD SQUARE

WITHIN CLOSE PROXIMITY TO DOWNTOWN WESTFIELD

334 SOUTH AVE E

WESTFIELD | NEW JERSEY

1,143 SF

Inline Retail Shop
Available



RIPCO
REAL ESTATE

PROPERTY PHOTOS



SPACE DETAILS

LOW-LEVEL AERIAL



SIZE

Ground Floor 1,143 SF

CAM

\$9.00 psf

CO-TENANTS

Summit Health, Jennifer Day Spa, Cosmo Nails

COMMENTS

High visibility mixed-used shopping plaza
Walking distance to Downtown Westfield
New luxury apartments being delivered in close proximity/surrounding area in the coming months

FRONTAGE

South Ave 218 FT

RENT

Upon Request

NEIGHBORS

Mavis Discount Tire, ShopRite
Wines & Spirits, H&R Block,
Westfield Animal Hospital

STATUS OF PREMISES

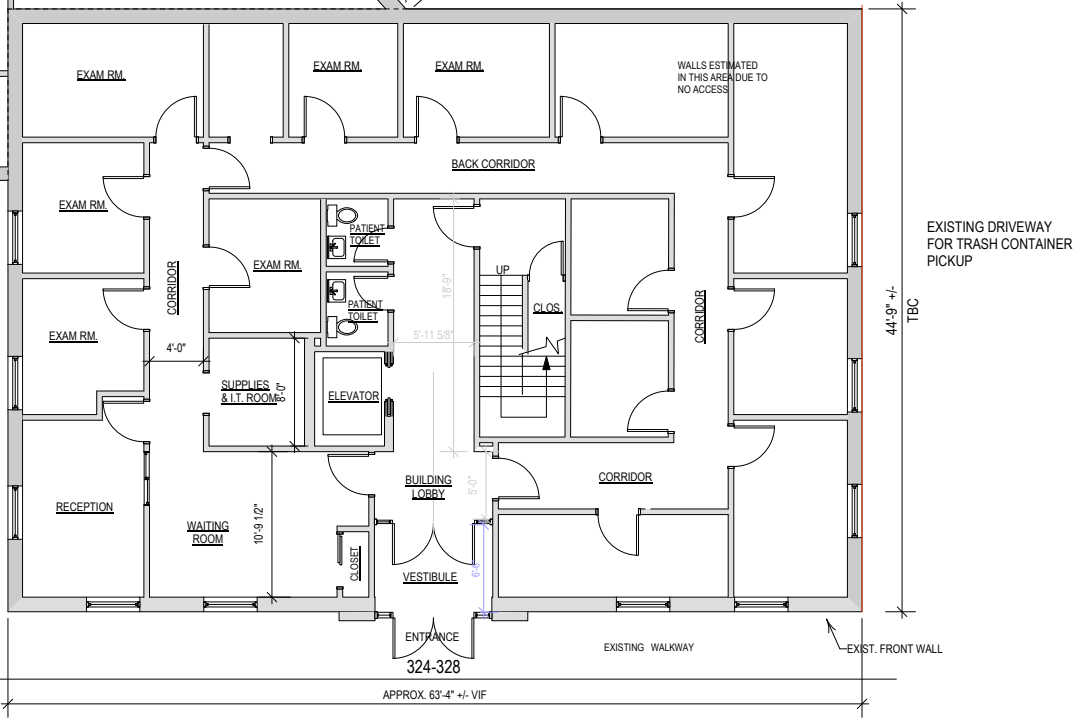
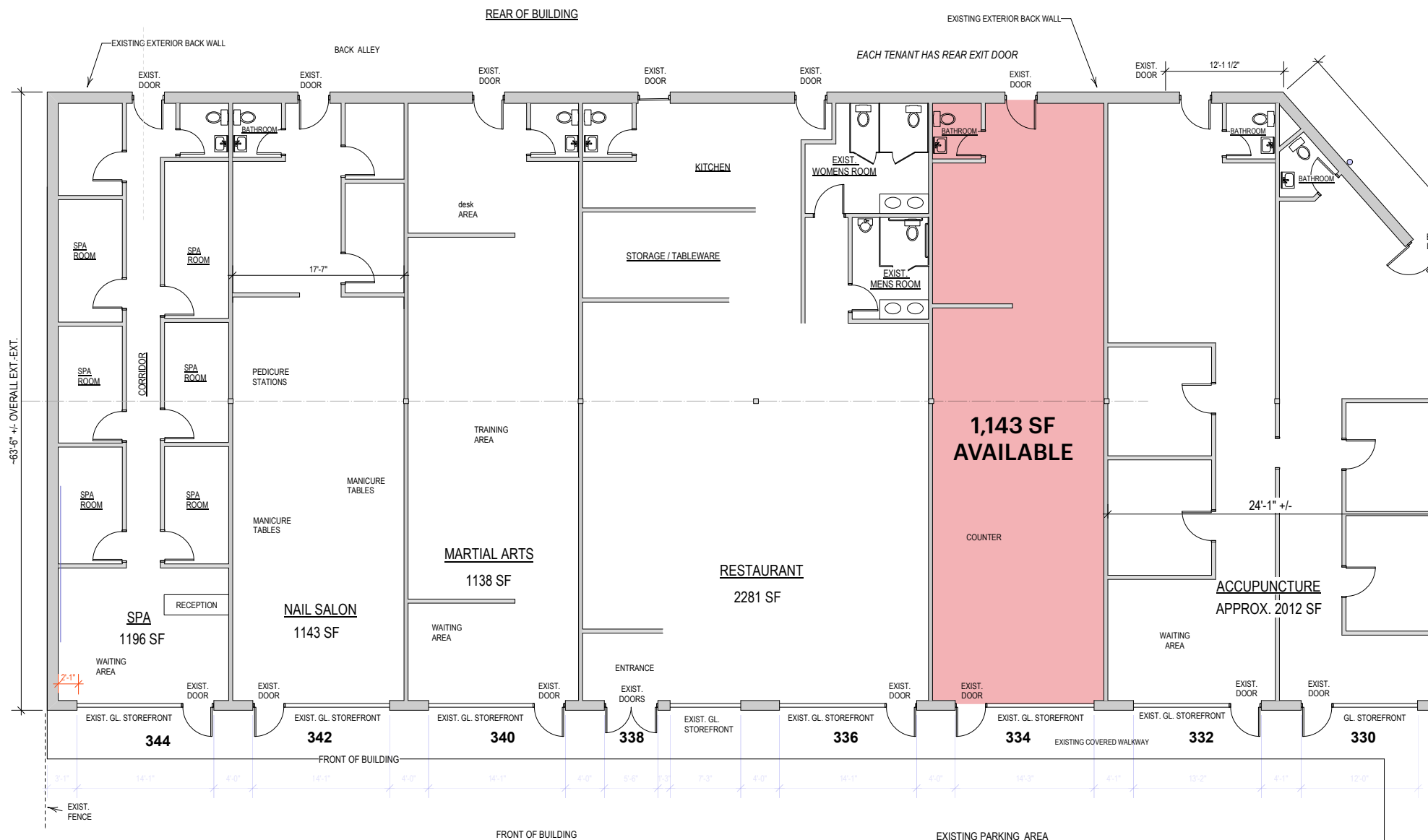
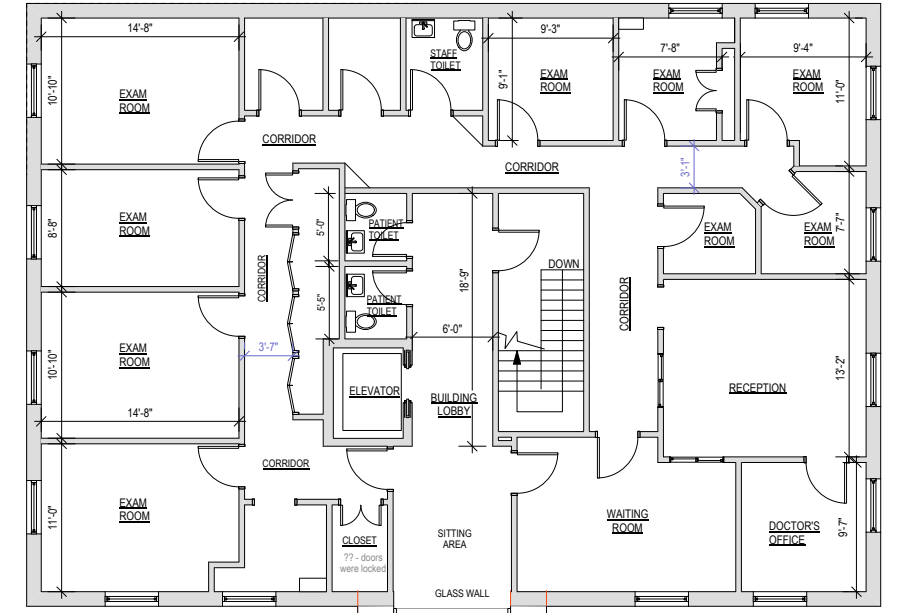
Vanilla Box

MARKET AERIAL



FLOOR PLAN

EXISTING 2 STORY BUILDING
 APPROX. 2,833 SF
 PER FLOOR
 X 2 FLOORS = 5,666 SF
 FIRST FLOOR TENANT: SUMMIT MEDICAL GROUP
 2nd FL. TENANT: RWJBH MEDICAL ASSOC. OF WESTFIELD
 FLOOR AREA FOR EACH FLOOR FORMERLY W/IT

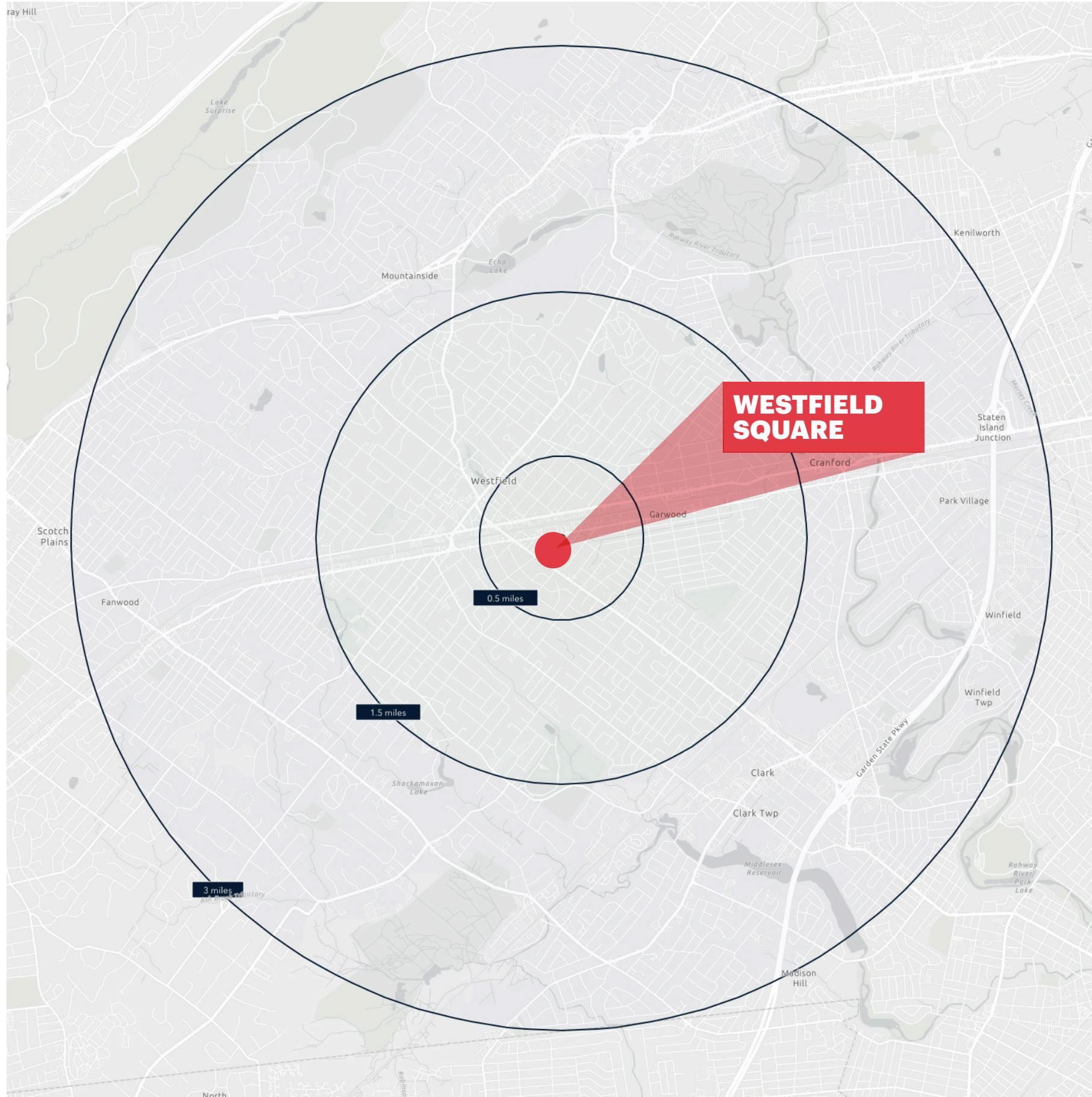


8 STRIP MALL TENANTS = APPROX. 8912 SF
 EXISTING 2 STORY BLDG. = APPROX. 5666 SF
 SUB-TOTAL FLOOR AREA = APPROX. 14578 SF
 + LOCKED UTILITY ROOMS = APPROX. 480 SF

EXISTING FIRST FLOOR PLAN
 Scale: 1/8" = 1'-0"
 0 5 10 15 20 FT

EXISTING PARKING AREA

DEMOGRAPHICS



0.5 MILE RADIUS

POPULATION

4,617

HOUSEHOLDS

1,759

MEDIAN AGE

39.9

COLLEGE GRADUATES (Bachelor's +)

2,114 - 66.0%

TOTAL BUSINESSES

505

TOTAL EMPLOYEES

4,423

AVERAGE HOUSEHOLD INCOME

\$186,620

1.5 MILE RADIUS

POPULATION

38,213

HOUSEHOLDS

13,586

MEDIAN AGE

43.0

COLLEGE GRADUATES (Bachelor's +)

18,246 - 70.0%

TOTAL BUSINESSES

1,509

TOTAL EMPLOYEES

19,488

AVERAGE HOUSEHOLD INCOME

\$232,246

3 MILE RADIUS

POPULATION

115,142

HOUSEHOLDS

41,624

MEDIAN AGE

43.9

COLLEGE GRADUATES (Bachelor's +)

50,583 - 63.0%

TOTAL BUSINESSES

5,000

TOTAL EMPLOYEES

62,773

AVERAGE HOUSEHOLD INCOME

\$202,924

*2022 estimates

CONTACT EXCLUSIVE AGENTS

THERESE O'BRIAN

tob@ripconj.com
201.249.6616

DAVID MORROW

dmorrow@ripconj.com
201.636.7329

RIPCO
REAL ESTATE

611 River Drive
3rd Floor
Elmwood Park, NJ 07407
201.777.2300

Please visit us at ripconj.com for more information

This information has been secured from sources we believe to be reliable, but we make no representations as to the accuracy of the information. References to square footage are approximate. Buyer must verify the information and bears all risk for any inaccuracies.