

FITNESS/MEDICAL/QSR/RESTAURANT-PERMITTED/STREET RETAIL

15 WYCKOFF AVENUE

Cross Street Information

BUSHWICK

BROOKLYN | NY

2,340 SF

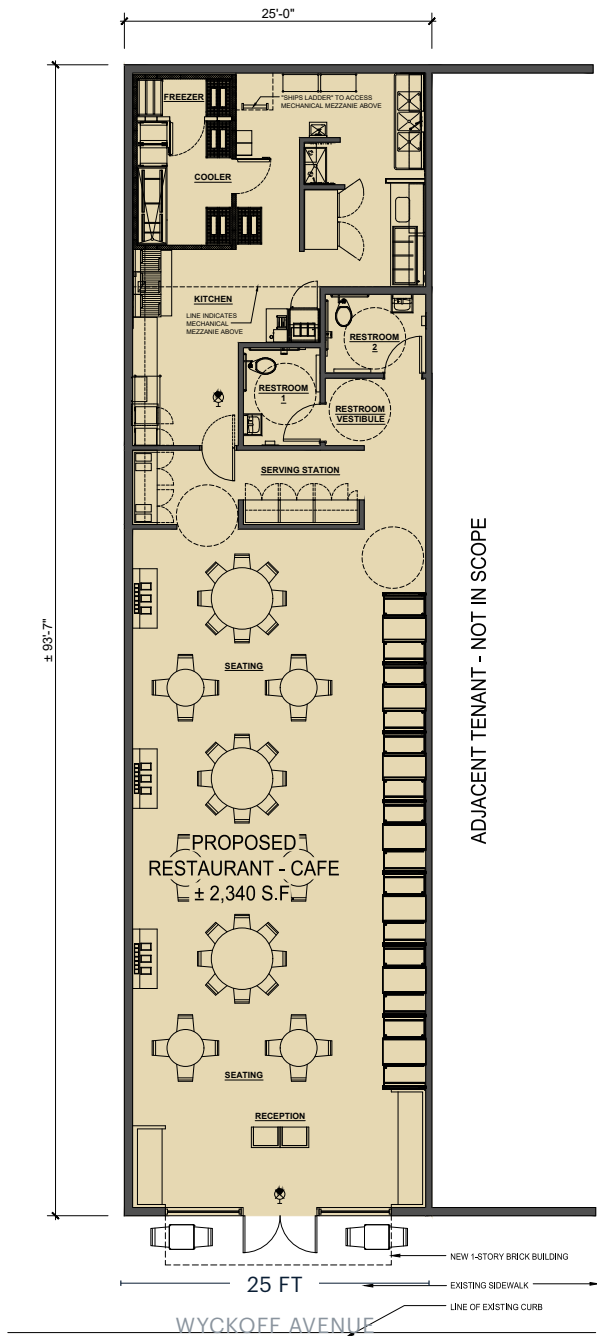
For Lease



ARTIST'S RENDERING

RIPCO
REAL ESTATE

SPACE DETAILS



LOCATION

Wyckoff Avenue between Troutman and Jefferson Streets

SIZE

Ground Floor 2,340 SF

FRONTAGE

Wyckoff Avenue 25 FT

CEILING HEIGHTS

Ground Floor Approx. 20 Ft

STATUS

Currently in pre-construction

POSSESSION

Q4 2024

TERM

Negotiable

RENT

Upon request

NEIGHBORS

House of Yes, Kings County Brewer's Collective, Sea Wolf, Artichoke Basille's, Other People's Clothes, Black Seed Bagels, Lot 45, Cocktail Magique Theatre, Elsewhere, Brooklyn Made, Union Pizza Works, Jupiter Disco, MetroRock Bushwick

COMMENTS

New Construction, single tenant building for lease

Opportunity to work with ownership to collaborate in the construction and design process

At the best block off of the Jefferson L Train

TRANSPORTATION

2022 Ridership Report

Jefferson Street

Annual	1,766,118
Weekday	5,100
Weekend	8,648



B38

Annual	3,247,934
Weekday	10,275
Weekend	11,668



AREA RETAIL



CONTACT EXCLUSIVE AGENTS

BEN WEINER

bweiner@ripcony.com
718.233.6565

BRENDAN REICHENBACHER

ber@ripcony.com
718.233.6565

RIPCO
REAL ESTATE

32 Court Street
10th Floor
Brooklyn, NY 11201
718.233.6565

Please visit us at ripcony.com for more information

This information has been secured from sources we believe to be reliable, but we make no representations as to the accuracy of the information. References to square footage are approximate. Buyer must verify the information and bears all risk for any inaccuracies.