

RETAIL SPACE

866 BROADWAY

East block between 17th and 18th Streets

UNION SQUARE
MANHATTAN | NY

1,870 SF

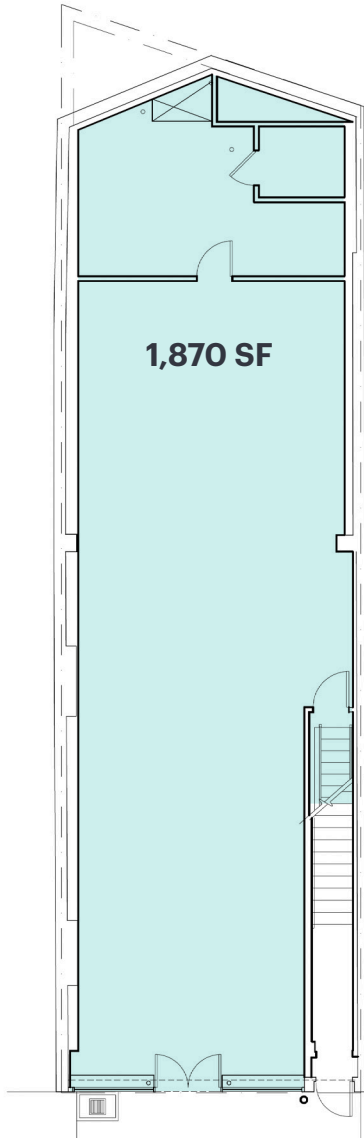
For Lease



RIPCO
REAL ESTATE

SPACE DETAILS

GROUND FLOOR

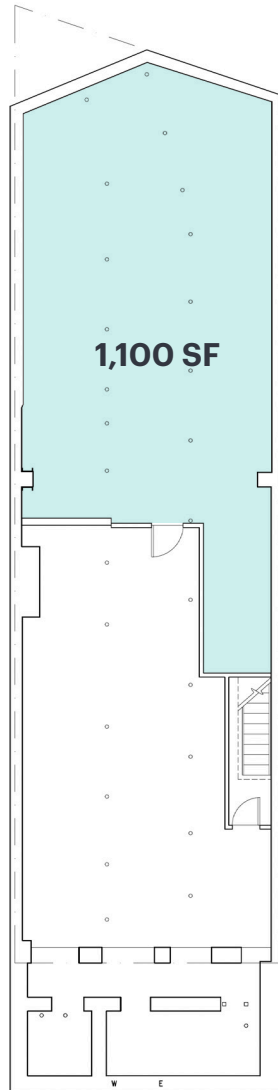


1,870 SF

21 FT

BROADWAY

BASEMENT



1,100 SF

LOCATION

East block between 17th and 18th Streets

SIZE

Ground Floor	1,870 SF
Basement	1,100 SF
Total	2,970 SF

FRONTAGE

Broadway	21 FT
----------	-------

CEILING HEIGHTS

Ground Floor	10 FT
--------------	-------

STATUS

Currently Scotch & Soda

TERM

Long term

RENT

Upon request

POSSESSION

Immediate

NEIGHBORS

- Allbirds
- Aritzia
- blumercury
- Claire's (coming soon)
- Crate & Barrel (coming soon)
- Doc Martens
- Equinox
- Filson
- Fresh
- Herschel
- Lululemon
- Pandora
- Parachute
- Paragon Sports
- Pret a Manger
- Psycho Bunny
- Venchi

COMMENTS

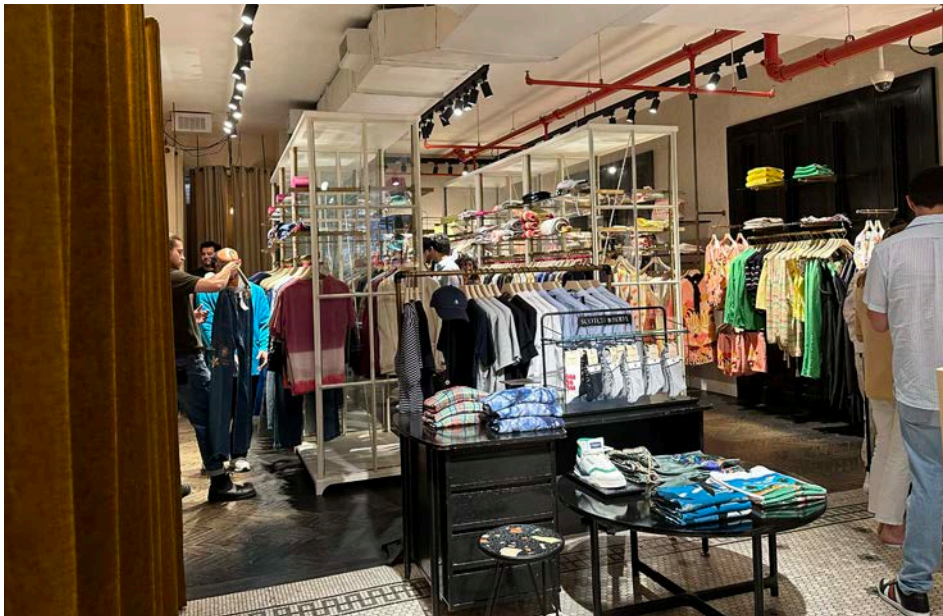
Move-in-ready retail – steps from Union Square

TRANSPORTATION

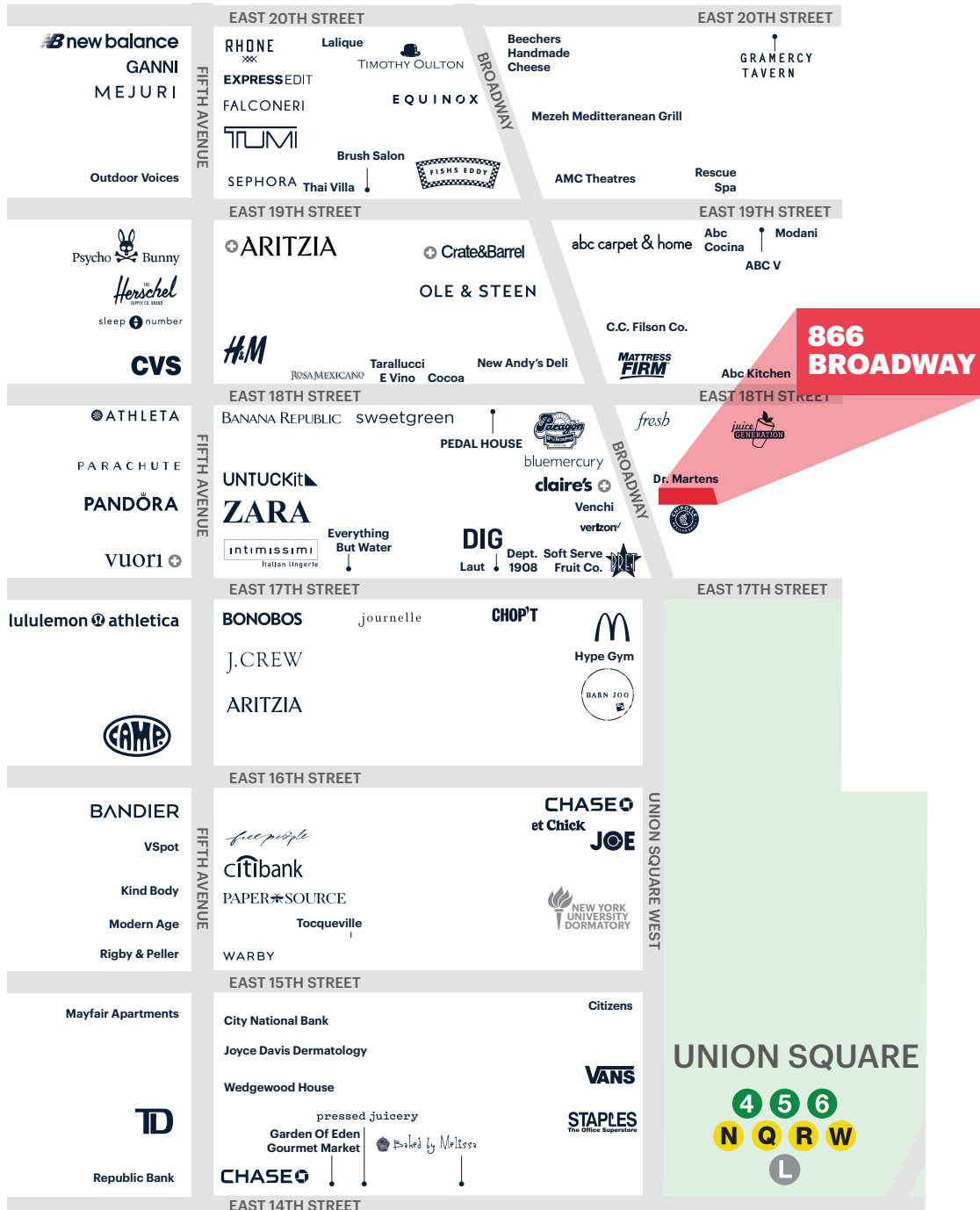
2022 Ridership Report

Union Square	R W N Q L 4 5 6 6
Annual	17,809,631
Weekday	54,139
Weekend	74,876

ADDITIONAL PHOTOS



AREA RETAIL



CONTACT EXCLUSIVE AGENTS

BETH ROSEN
brosen@ripcony.com

EMILY KRIPITZ
ekripitz@ripcony.com

212.750.6565

RIPCO | 150 East 58th Street
REAL ESTATE | 15th Floor
New York, NY 10115
212.750.6565

Please visit us at ripcony.com for more information

This information has been secured from sources we believe to be reliable, but we make no representations as to the accuracy of the information. References to square footage are approximate. Buyer must verify the information and bears all risk for any inaccuracies.