

RETAIL SPACE

743 SIXTH AVENUE

Between West 24th and 25th Streets

CHELSEA

MANHATTAN | NY

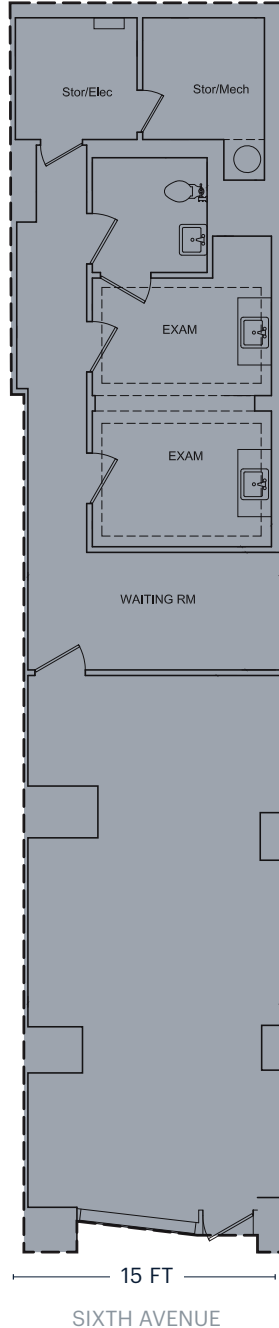
1,200 SF

For Lease



RIPCO
REAL ESTATE

SPACE DETAILS



LOCATION

West block between West 24th and 25th Streets

SIZE

Ground Floor 1,200 SF

FRONTAGE

Sixth Avenue 15 FT

CEILING HEIGHTS

Ground Floor 22 FT

STATUS

Formerly Pilar Beauty Spa

POSSESSION

Immediate

RENT

Upon request

NEIGHBORS

- 2 Bros. Pizza
- Best Buy
- Chase Bank
- CitiBank
- CVS
- Dunkin'
- Everytable
- Fairway Market
- NYC Wine Merchants
- Starbucks
- The Corner Cafe
- The Grey Dog—Flatiron

COMMENTS

Fully built-out space

TRANSPORTATION

2021 Ridership Report

23rd Street	F M PATH	23rd Street	1
Annual	3,240,722	Annual	1,843,351
Weekday	10,426	Weekday	5,583
Weekend	10,956	Weekend	7,841

