

RETAIL / OFFICE / MEDICAL SPACE

2857 WEST 8TH STREET

Between Surf Avenue and Sheepshead Bay Road

CONEY ISLAND

BROOKLYN | NY

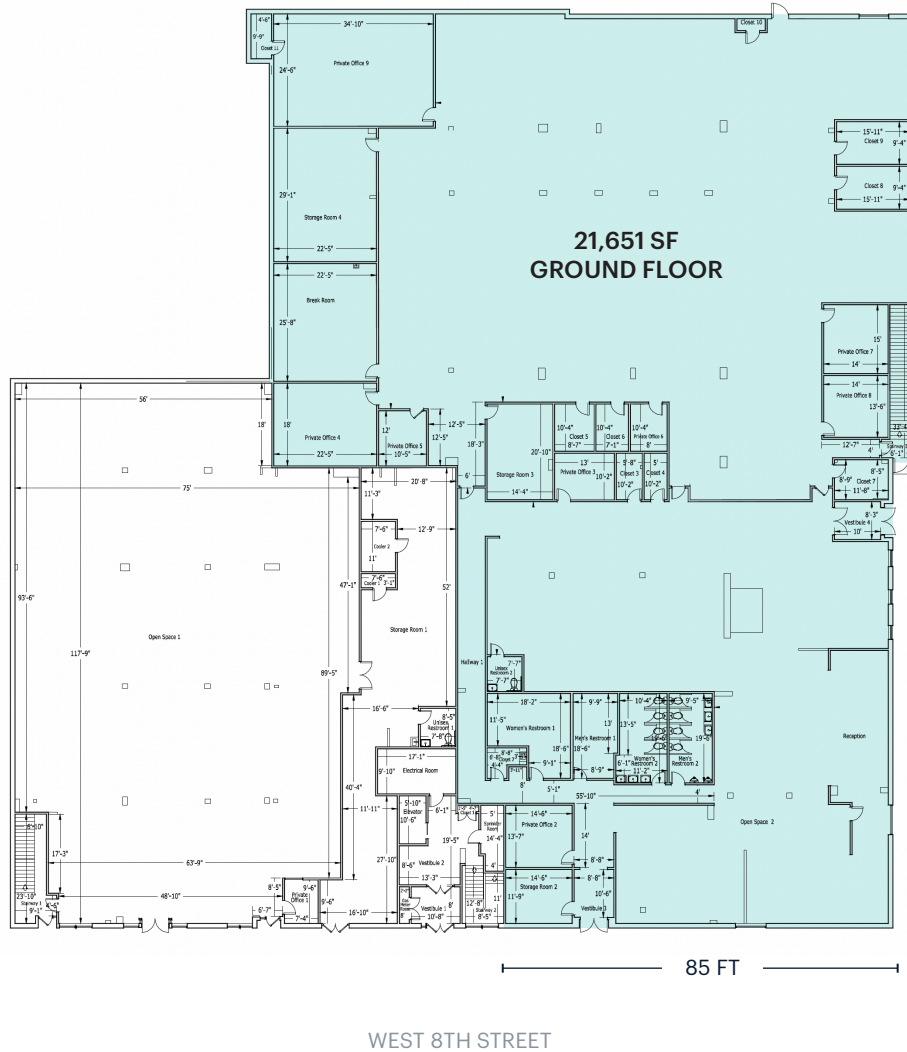
21,651 SF

Ground Floor
For Lease



RIPCO
REAL ESTATE

SPACE DETAILS



LOCATION

West 8th Street between Surf Avenue and Sheepshead Bay Road

SIZE

Ground Floor 21,651 SF

FRONTAGE

West 8th Street 85 FT

CEILING HEIGHTS

Ground Floor 13 FT

STATUS

Formerly NYC HRA

POSSESSION

Immediate

TERM

Long term

RENT

Upon request

NEIGHBORS

Blink Fitness, Dollar Tree, NYU Langone, DII Stores, NYC DMV

COMMENTS

Glass façade possible
Logical divisions possible

TRANSPORTATION

2021 Ridership Report

West 8 Street - NY Aquarium **F** **Q**

Annual	431,449
Weekday	1,285
Weekend	1,831

ESTIMATED DAYTIME POPULATION 2023

0.75 mile	44,325
1 mile	80,464

LOCAL HOUSEHOLDS

0.75 mile	19,714
1 mile	33,106

AREA RETAIL



CONTACT EXCLUSIVE AGENTS

ABRAHAM R. DAYAN
adayan@ripcony.com
212.230.5886

HYMIE M. DWECK
hdweck@ripcony.com
718.233.6565

RIPCO
REAL ESTATE

150 East 58th Street
15th Floor
New York, NY 10115
212.750.6565

Please visit us at ripcony.com for more information

This information has been secured from sources we believe to be reliable, but we make no representations as to the accuracy of the information. References to square footage are approximate. Buyer must verify the information and bears all risk for any inaccuracies.