



## RETAIL SPACE

# WANTAGH, NY

## WANTAGH PLAZA

1906-1928 WANTAGH AVENUE

### CO-TENANTS

Otto's Delicatessen, Prince Umberto Pizzeria, Bunker Hill American Taproom, One Stop Auto Unlimited, D'Angelo Sports, Jupiters Salon, Sharon Nails, Lash City

### NEIGHBORS

USPS, McDonald's, Wantagh Public Library, Bank of American, Thom Thom Steak & Seafood, Craft Kitchen & Tap House, Mulcahy's Pub, Wantagh Inn, Dunkin' Donuts, Mattress Firm, T-Mobile, Cosmo Prof, AT&T and more!

### COMMENTS

Located at the signalized intersection of Wantagh Avenue and Park Avenue

One block from the Wantagh Long Island Rail Road Station with 18,306,985 riders annually on the Babylon Branch

Easy access on Wantagh Avenue and Park Avenue with three access points to the center

Close proximity to Sunrise Highway and Wantagh Parkway

65 Parking Stalls

## CONTACT EXCLUSIVE AGENT

### JOANNE ARGENTI

jargenti@ripcony.com

516.933.8880

**RIPCO**  
REAL ESTATE

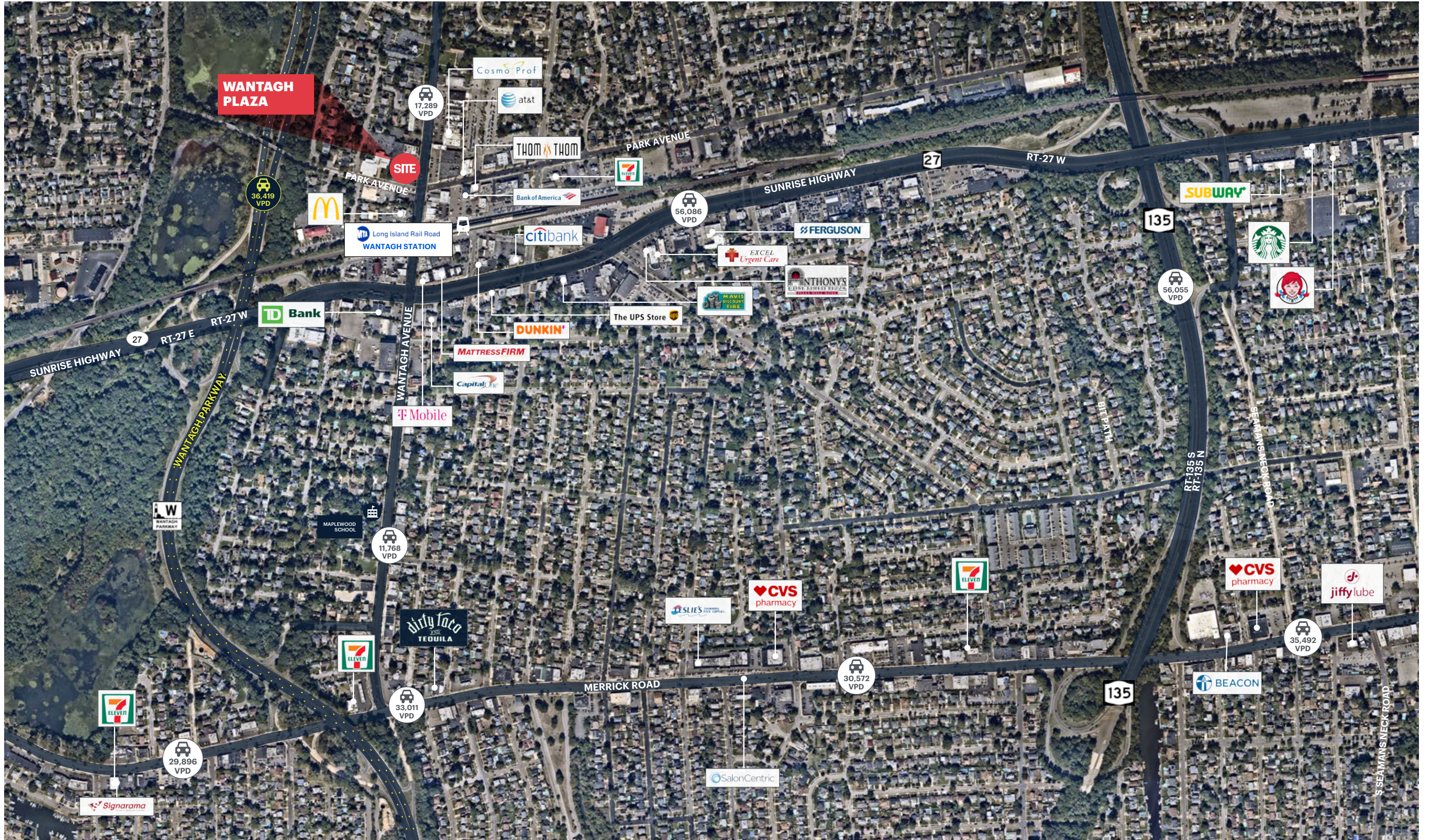
1000 Woodbury Road  
Suite 100  
Woodbury, NY 11797  
516.933.8880

Please visit us at [ripcony.com](http://ripcony.com) for more information

This information has been secured from sources we believe to be reliable, but we make no representations as to the accuracy of the information. References to square footage are approximate. Buyer must verify the information and bears all risk for any inaccuracies.

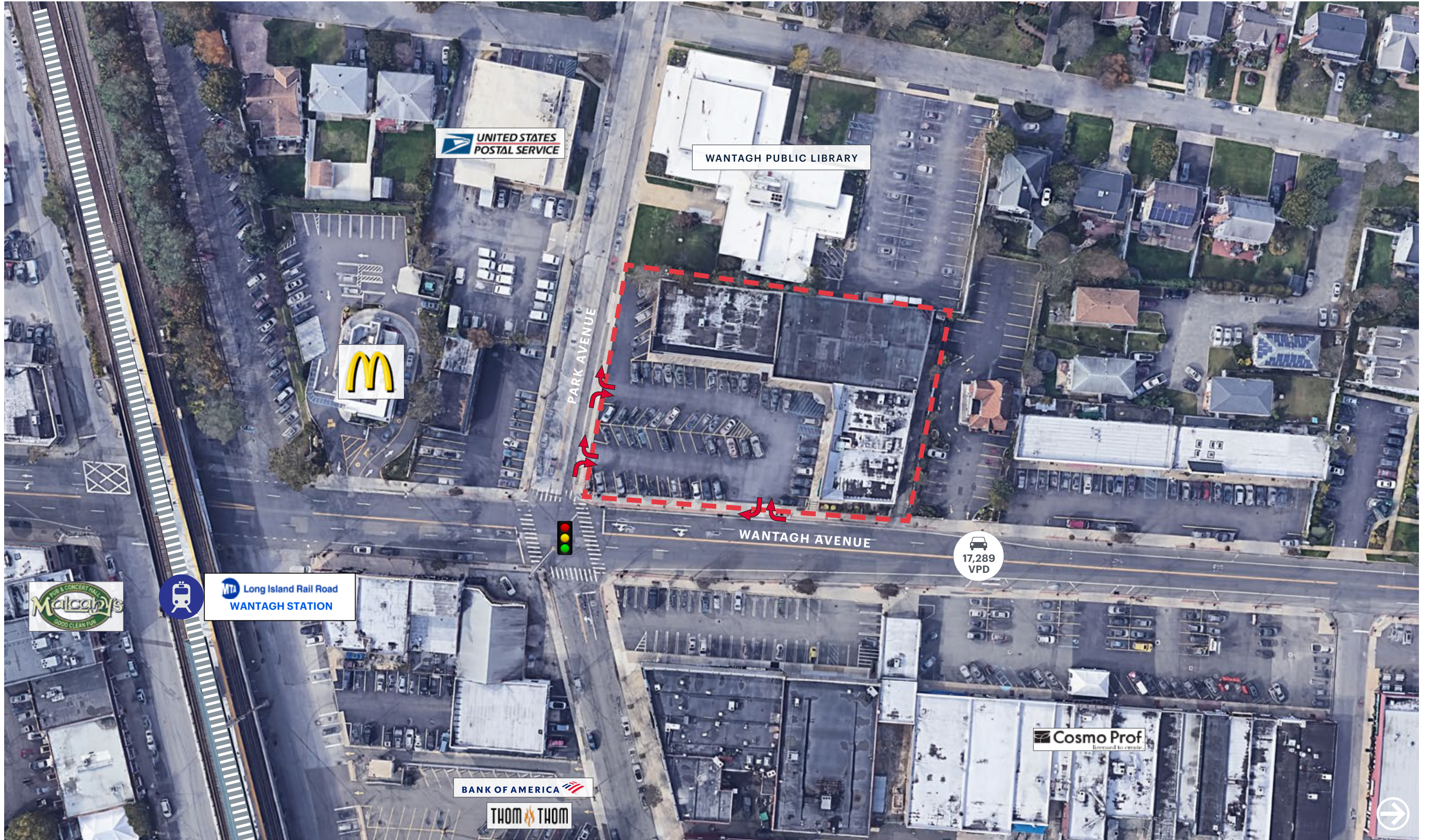


# MARKET AERIAL

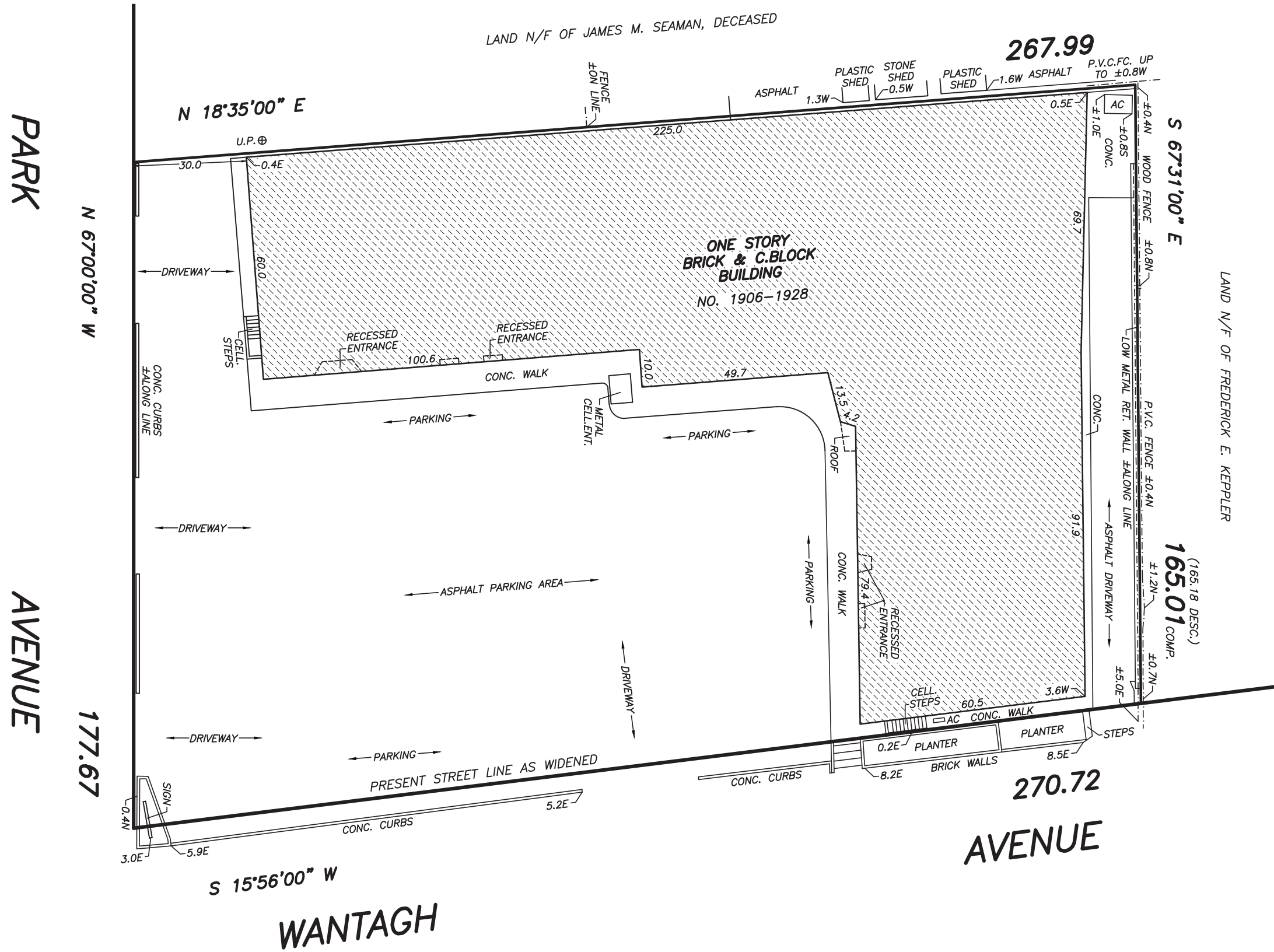




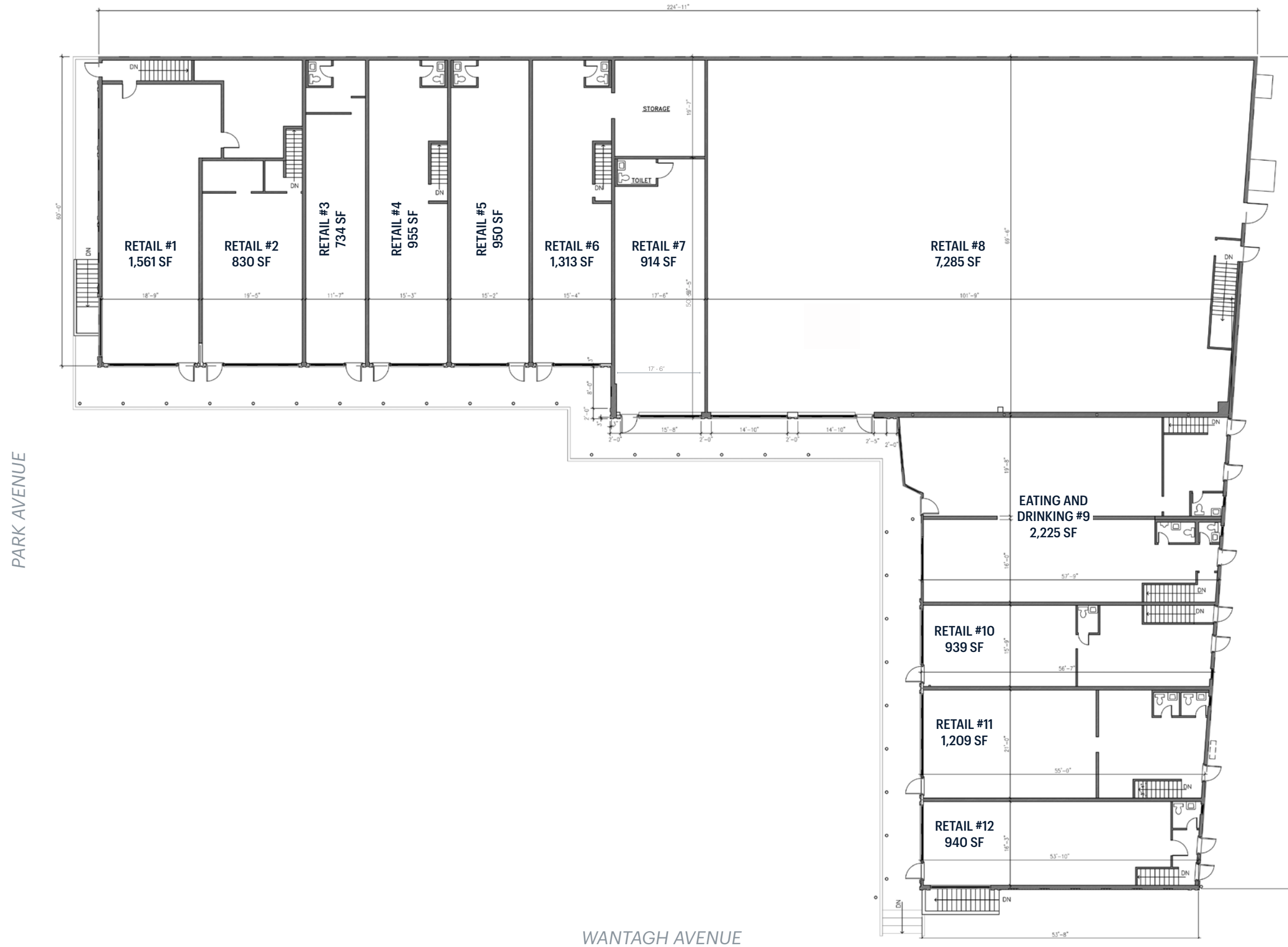
**AERIAL**







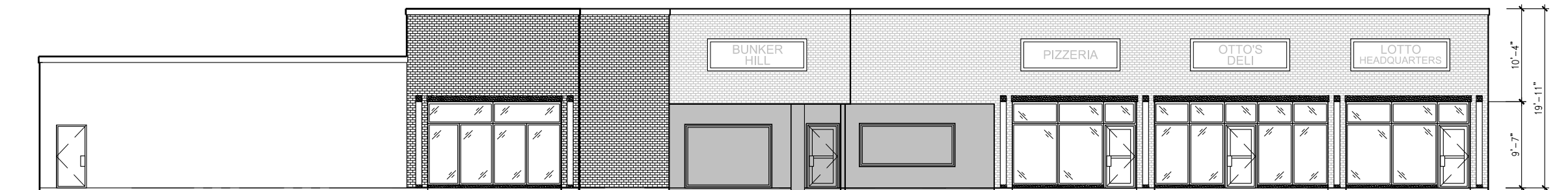
# SITE PLAN



# ELEVATIONS

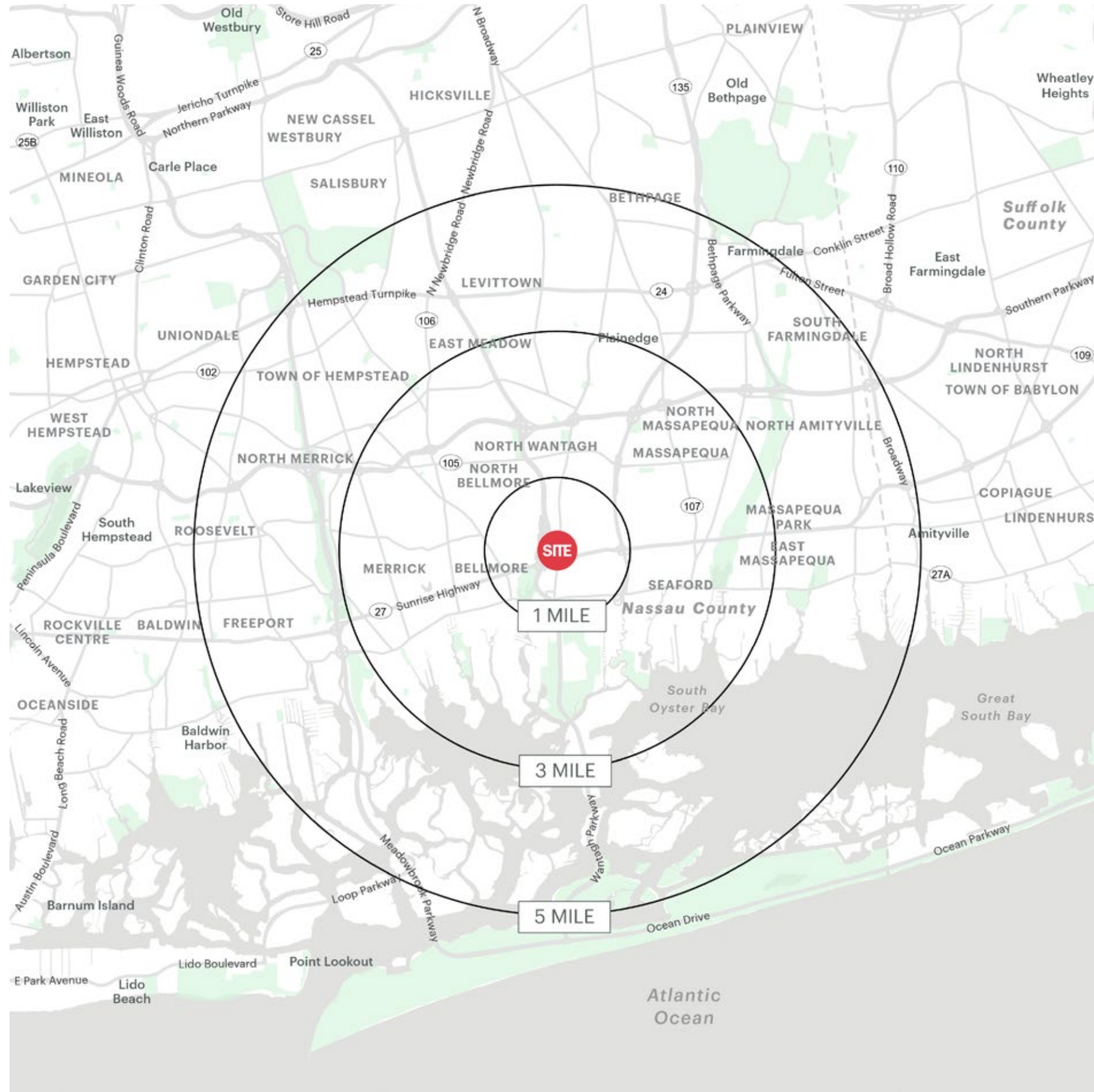


ELEVATION FROM WANTAGH AVE



ELEVATION FROM PARK AVE

# AREA DEMOGRAPHICS



## 1 MILE RADIUS

### POPULATION

19,224

### HOUSEHOLDS

6,383

### AVERAGE HOUSEHOLD INCOME

\$199,844

### MEDIAN HOUSEHOLD INCOME

\$162,600

### COLLEGE GRADUATES (BACHELOR'S +)

7,405 - 54.0%

### TOTAL BUSINESSES

971

### TOTAL EMPLOYEES

6,888

### DAYTIME POPULATION (W/ 16 YR +)

16,868

## 3 MILE RADIUS

### POPULATION

160,427

### HOUSEHOLDS

53,313

### AVERAGE HOUSEHOLD INCOME

\$188,429

### MEDIAN HOUSEHOLD INCOME

\$153,419

### COLLEGE GRADUATES (BACHELOR'S +)

59,507 - 52.0%

### TOTAL BUSINESSES

5,095

### TOTAL EMPLOYEES

47,265

### DAYTIME POPULATION (W/ 16 YR +)

127,634

## 5 MILE RADIUS

### POPULATION

408,459

### HOUSEHOLDS

130,580

### AVERAGE HOUSEHOLD INCOME

\$163,702

### MEDIAN HOUSEHOLD INCOME

\$128,161

### COLLEGE GRADUATES (BACHELOR'S +)

126,155 - 43.0%

### TOTAL BUSINESSES

12,873

### TOTAL EMPLOYEES

124,626

### DAYTIME POPULATION (W/ 16 YR +)

332,290



# AREA DEMOGRAPHICS

