

MEDICAL/RETAIL SPACE FOR LEASE

200 ROUTE 46 W

PARSIPPANY
NEW JERSEY

2,638 SF

Former Medical Building
Available



SPACE DETAILS



SIZE

Ground Floor 2,638 SF

FRONTAGE

Route 46 180 FT

STATUS OF PREMISES

Former Medical

RENT

Upon Request

NEIGHBORS

Paul Miller Audi, Bentley, Porsche, Land Rover, Ricciardi Brothers Home Design Center, Home Depot, ShopRite, Crunch, Harbor Freight, Target, Marshalls & HomeGoods coming soon

COMMENTS

Renovations and new facade proposed

Accessible from Route 46 and Old Bloomfield Ave; front and rear access points

Highway traffic and visibility

Excellent signage includes large pylon signs

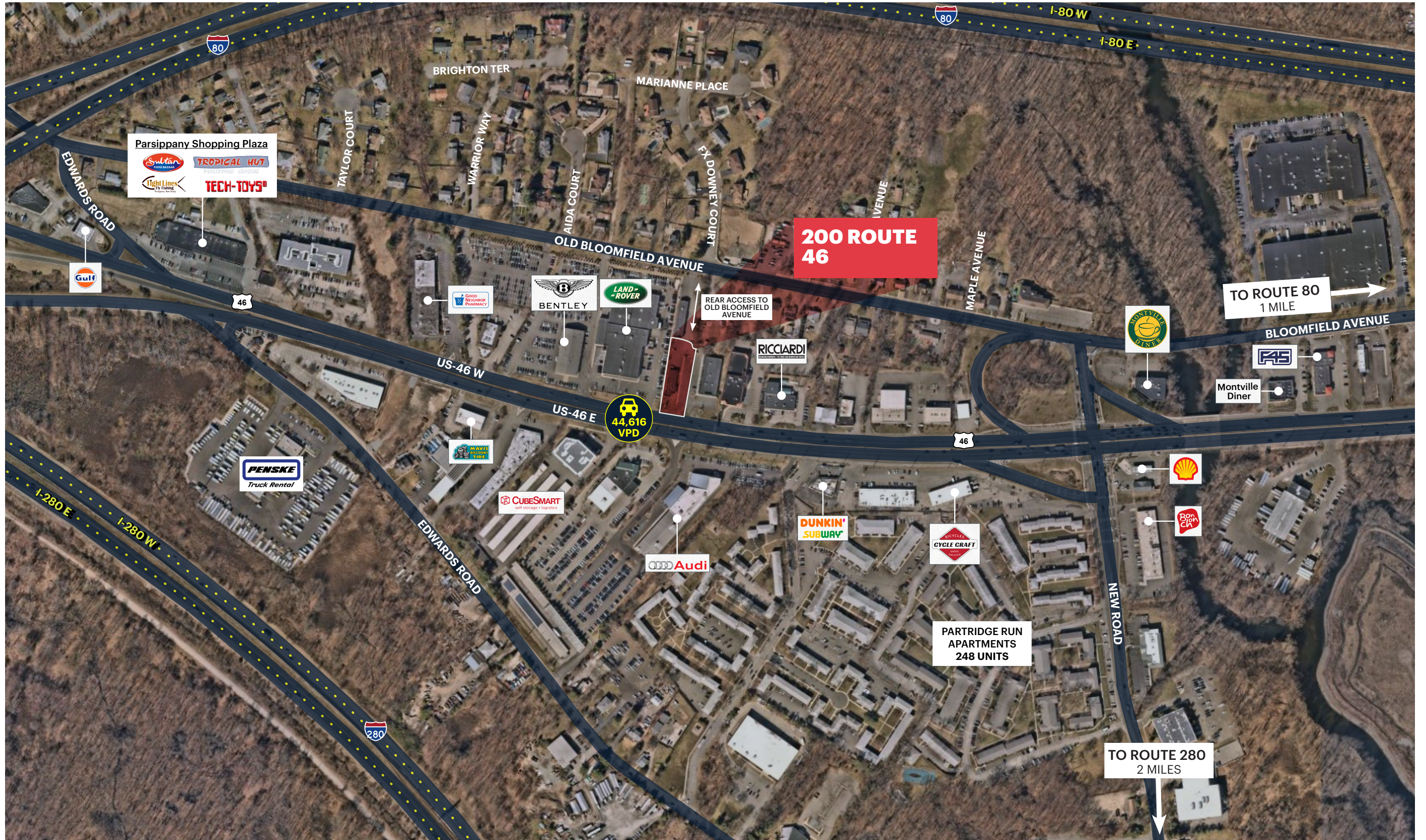
Permitted uses include recreation, medical, physical therapy, home improvements/design, food & beverage

Approximately, 70 car parking

Zoning: B-2 Highway Development

Immediate access to Route 287, Route 280, and Route 80

LOW-LEVEL AERIAL



MARKET AERIAL



DEMOGRAPHICS



1 MILE RADIUS

POPULATION
3,100

HOUSEHOLDS
1,338

MEDIAN AGE
37.9

COLLEGE GRADUATES (Bachelor's +)
1,380 - 60.0%

TOTAL BUSINESSES
418

TOTAL EMPLOYEES
3,529

AVERAGE HOUSEHOLD INCOME
\$128,349

3 MILE RADIUS

POPULATION
47,464

HOUSEHOLDS
17,704

MEDIAN AGE
42.5

COLLEGE GRADUATES (Bachelor's +)
20,458 - 59.0%

TOTAL BUSINESSES
2,857

TOTAL EMPLOYEES
32,139

AVERAGE HOUSEHOLD INCOME
\$163,395

5 MILE RADIUS

POPULATION
146,576

HOUSEHOLDS
54,298

MEDIAN AGE
44.7

COLLEGE GRADUATES (Bachelor's +)
65,156 - 61.0%

TOTAL BUSINESSES
9,345

TOTAL EMPLOYEES
122,629

AVERAGE HOUSEHOLD INCOME
\$186,145

*2022 estimates

CONTACT EXCLUSIVE AGENTS

THERESE O'BRIAN

tob@ripconj.com
201.249.6616

FLORIAN SUSERMAN

fsuserman@ripconj.com
201.777.2301

RIPCO
REAL ESTATE

611 River Drive
3rd Floor
Elmwood Park, NJ 07407
201.777.2300

Please visit us at [ripconj.com](https://www.ripconj.com) for more information

This information has been secured from sources we believe to be reliable, but we make no representations as to the accuracy of the information. References to square footage are approximate. Buyer must verify the information and bears all risk for any inaccuracies.