



## RETAIL SPACE

# HUNTINGTON, NY

## 16 NEW STREET

### SIZE

First Floor	8,500 SF
Second Floor	8,500 SF

### ASKING RENT

Upon Request

### NEIGHBORS

The Shed, Honu Kitchen & Cocktails, Mission Taco, The Runner's Edge, Portofino, Burgerology, Starbucks, The Paramount, Besito, TD Bank, Kashi, Cactus Salon, Hatch, Oaxaca Kitchen and many more

### COMMENTS

Former fitness space available

Adjacent free municipal parking lot

Located in the heart of downtown Huntington

## CONTACT EXCLUSIVE AGENTS

### JASON SOBEL

jsobel@ripcony.com  
516.933.8880

### JULIANA CHIARELLI

jchiarelli@ripcony.com  
516.933.8880

**RIPCO**  
REAL ESTATE

1000 Woodbury Road  
Suite 100  
Woodbury, NY 11797  
516.933.8880

Please visit us at [ripcony.com](https://www.ripcony.com) for more information

This information has been secured from sources we believe to be reliable, but we make no representations as to the accuracy of the information. References to square footage are approximate. Buyer must verify the information and bears all risk for any inaccuracies.





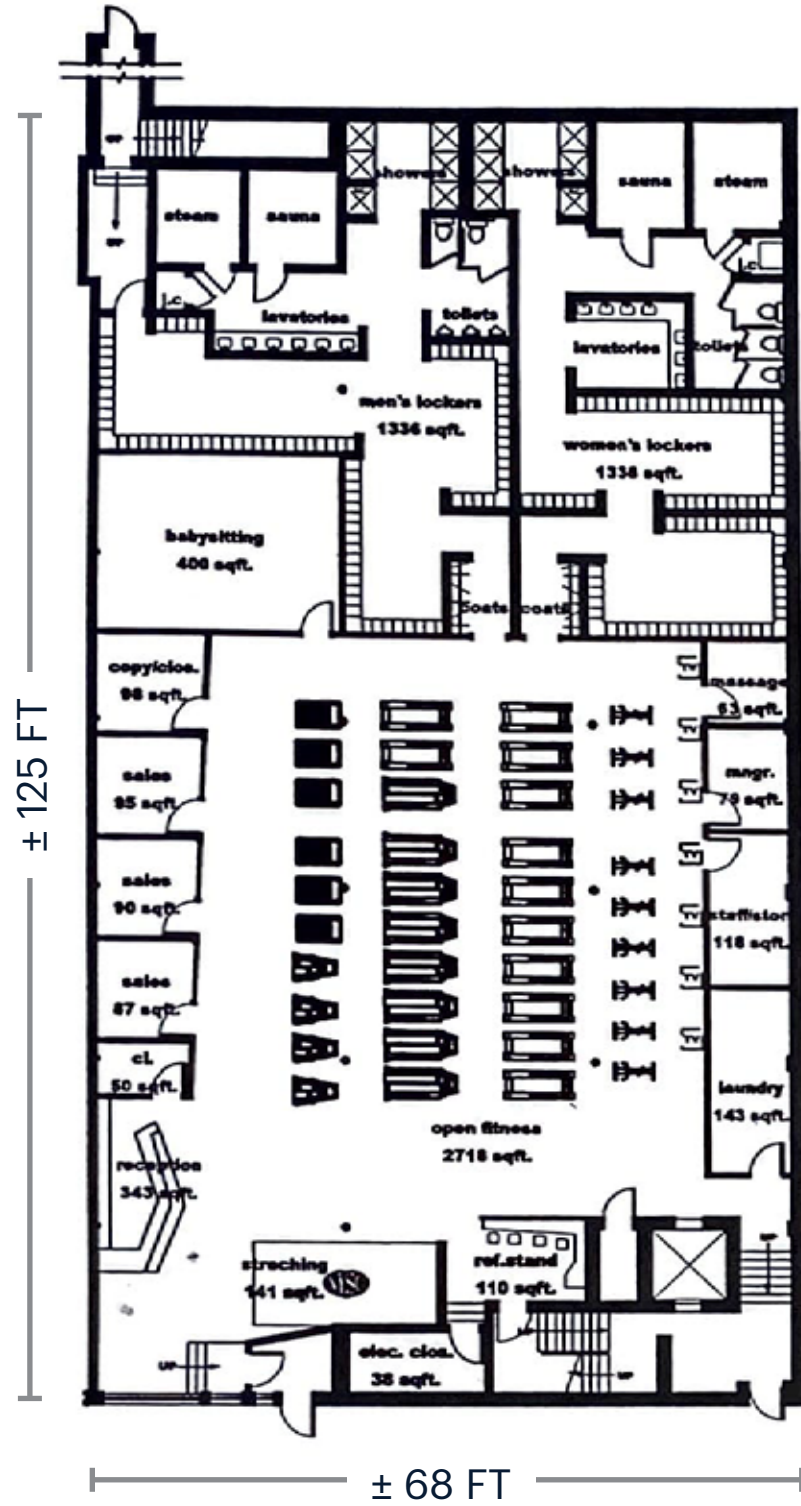


# DOWNTOWN HUNTINGTON AERIAL





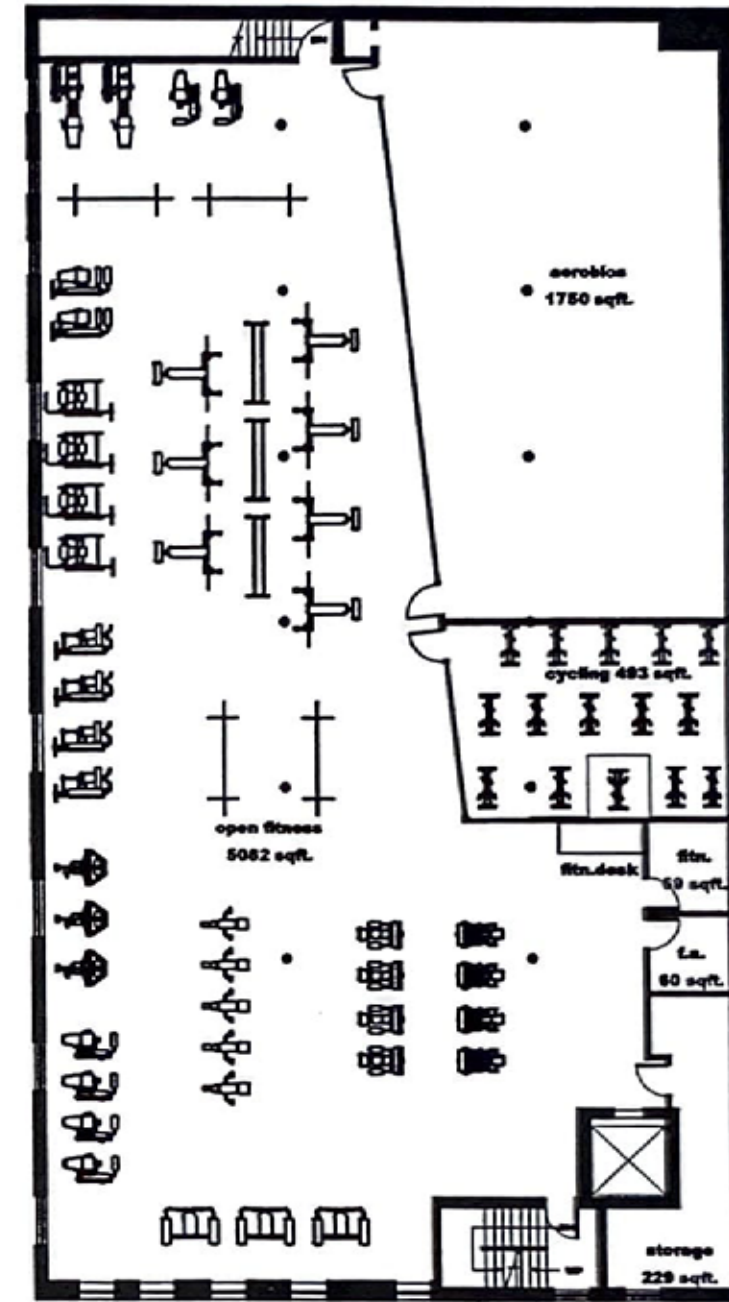
**SITE PLAN**



**first floor plan**

total rentable - 8500 sqft.

total usable - 7550 sqft



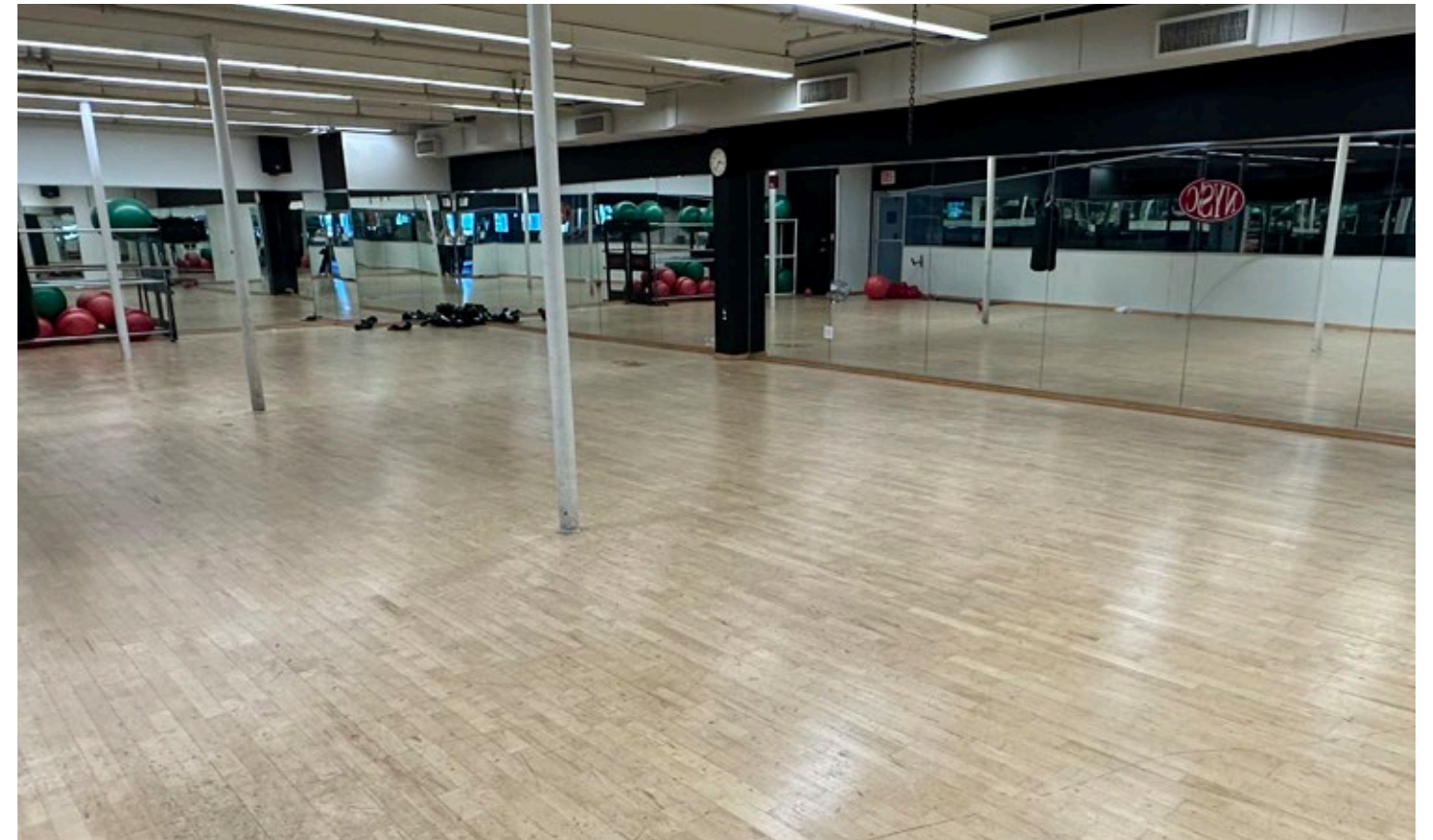
**second floor plan**

total rentable - 8550 sqft.

total usable - 7900 sqft

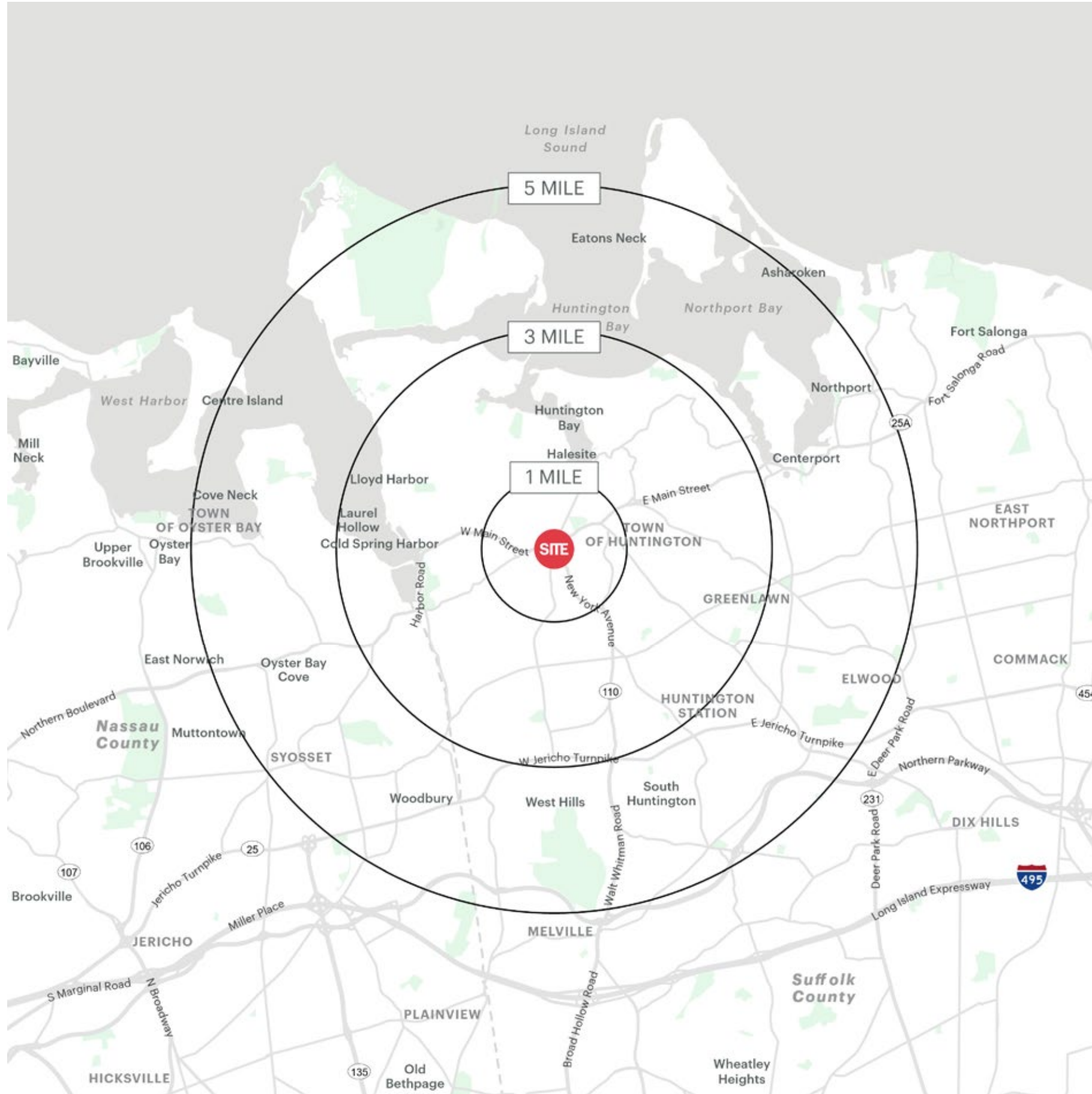


**INTERIOR PHOTOS**





# AREA DEMOGRAPHICS



16 NEW STREET HUNTINGTON, NEW YORK

## 1 MILE RADIUS

### POPULATION

10,553

### HOUSEHOLDS

4,703

### AVERAGE HOUSEHOLD INCOME

\$187,554

### MEDIAN HOUSEHOLD INCOME

\$126,372

### COLLEGE GRADUATES (BACHELOR'S +)

4,932 - 63.0%

### TOTAL BUSINESSES

1,375

### TOTAL EMPLOYEES

12,045

### DAYTIME POPULATION (W/ 16 YR +)

16,732

## 3 MILE RADIUS

### POPULATION

67,069

### HOUSEHOLDS

22,936

### AVERAGE HOUSEHOLD INCOME

\$196,703

### MEDIAN HOUSEHOLD INCOME

\$137,714

### COLLEGE GRADUATES (BACHELOR'S +)

26,487 - 56.0%

### TOTAL BUSINESSES

3,424

### TOTAL EMPLOYEES

32,497

### DAYTIME POPULATION (W/ 16 YR +)

65,605

## 5 MILE RADIUS

### POPULATION

136,029

### HOUSEHOLDS

46,876

### AVERAGE HOUSEHOLD INCOME

\$208,160

### MEDIAN HOUSEHOLD INCOME

\$150,296

### COLLEGE GRADUATES (BACHELOR'S +)

56,218 - 59.0%

### TOTAL BUSINESSES

6,278

### TOTAL EMPLOYEES

59,771

### DAYTIME POPULATION (W/ 16 YR +)

126,774



# AREA DEMOGRAPHICS

