



# WASHINGTON HEIGHTS | NEW YORK

BROADWAY BETWEEN 178TH AND 179TH STREET

# GWB MARKET | MERCADO

Marshall's



W 178 St

2nd Level: 8,240 SF This signage band comes with this space

blink

HARLEM RIVER DRIVE

GROUND CORNER SPACE 1,181 SF

**WEST WING AVAILABILITIES "THE HALL"**

From 135 SF to 2,591 SF

OFFICE / OUTLET /  
RETAIL / MEDICAL /  
RESTAURANT

**EAST WING AVAILABILITY**

First Floor: 1,181 SF  
Second Floor: 8,240 SF  
**Total: 9,421 SF**

RETAIL / OUTLET /  
RESTAURANT / MEDICAL

W 179 St

W 179 St

BROADWAY



**BUS PAVILLION**

OVER 3 MILLION TRIPS PER ANNUM



←  
*BROADWAY*  
→

**RETAIL AND OFFICE OPPORTUNITIES**





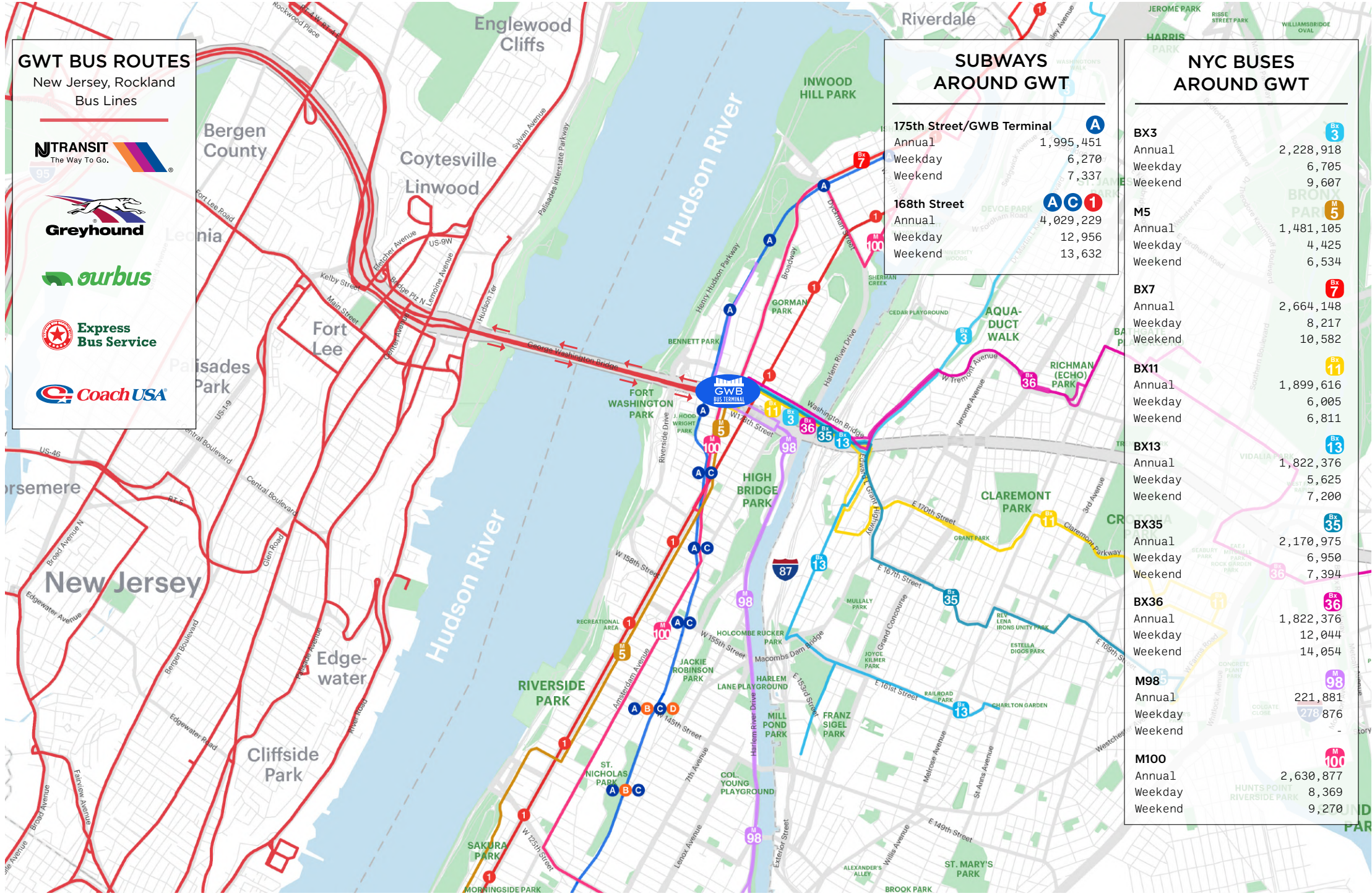
AERIAL MAP







TRANSPORTATION MAP



**GWT BUS ROUTES**  
New Jersey, Rockland Bus Lines

**NJ TRANSIT**  
The Way To Go.

**Greyhound**

**ourbus**

**Express Bus Service**

**Coach USA**

**SUBWAYS AROUND GWT**

<b>175th Street/GWB Terminal</b>	<b>A</b>
Annual	1,995,451
Weekday	6,270
Weekend	7,337
<b>168th Street</b>	<b>A C 1</b>
Annual	4,029,229
Weekday	12,956
Weekend	13,632

**NYC BUSES AROUND GWT**

<b>BX3</b>	<b>Bx 3</b>
Annual	2,228,918
Weekday	6,705
Weekend	9,607
<b>M5</b>	<b>M 5</b>
Annual	1,481,105
Weekday	4,425
Weekend	6,534
<b>BX7</b>	<b>Bx 7</b>
Annual	2,664,148
Weekday	8,217
Weekend	10,582
<b>BX11</b>	<b>Bx 11</b>
Annual	1,899,616
Weekday	6,005
Weekend	6,811
<b>BX13</b>	<b>Bx 13</b>
Annual	1,822,376
Weekday	5,625
Weekend	7,200
<b>BX35</b>	<b>Bx 35</b>
Annual	2,170,975
Weekday	6,950
Weekend	7,394
<b>BX36</b>	<b>Bx 36</b>
Annual	1,822,376
Weekday	12,044
Weekend	14,054
<b>M98</b>	<b>M 98</b>
Annual	221,881
Weekday	278,876
Weekend	-
<b>M100</b>	<b>M 100</b>
Annual	2,630,877
Weekday	8,369
Weekend	9,270





POINTS OF INTEREST



- WASHINGTON HEIGHTS SCHOOLS**  
(from North to South)
- Atmosphere Academy Public Charter School
  - PS 18 Park Terrace
  - Muscota
  - Middle School 322
  - PS Professor Juan Bosch
  - IS 528 BEA Fuller Rodgers School
  - PS 173
  - Castle Bridge School
  - Whin Music Community Charter School
  - Cuny City College
  - PS 123 Mahalia Jackson
  - Success Academy Charter School Harlem 6
  - PS 197 John B Russwurm
  - PS 125 Ralph Bunche

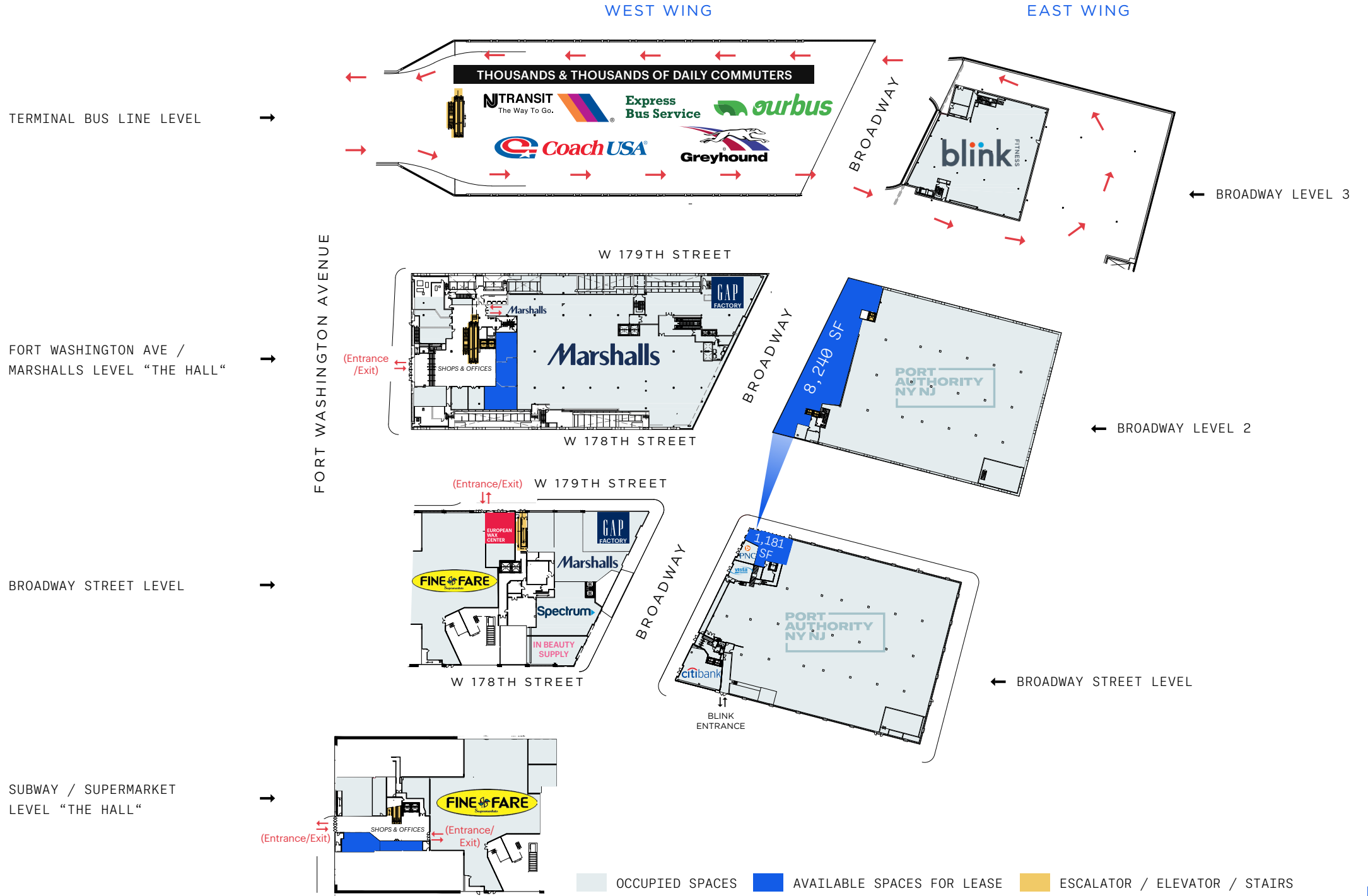
POINTS OF INTEREST

New York Presbyterian  
21,020  
Hospital Employees

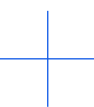
Columbia University



CROSS SECTION



**A** SUBWAY







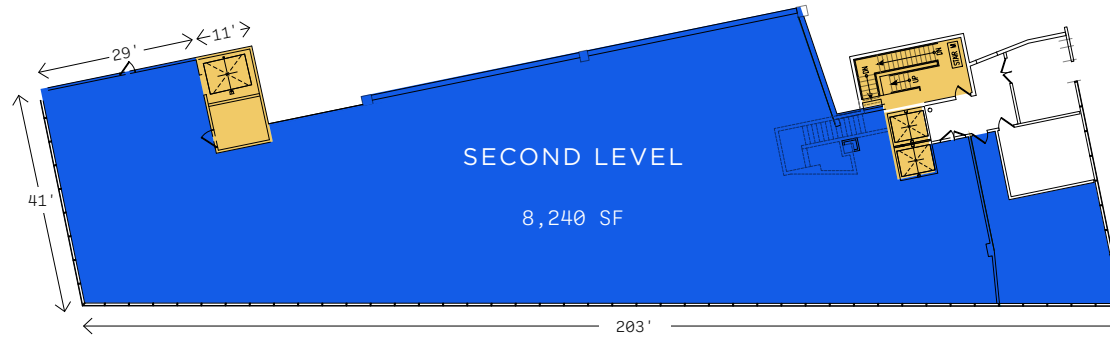
BROADWAY SIGNAGE



CORNER OF 179TH AND BROADWAY SIGNAGE



BROADWAY LOOKING ACROSS FROM THE SPACE

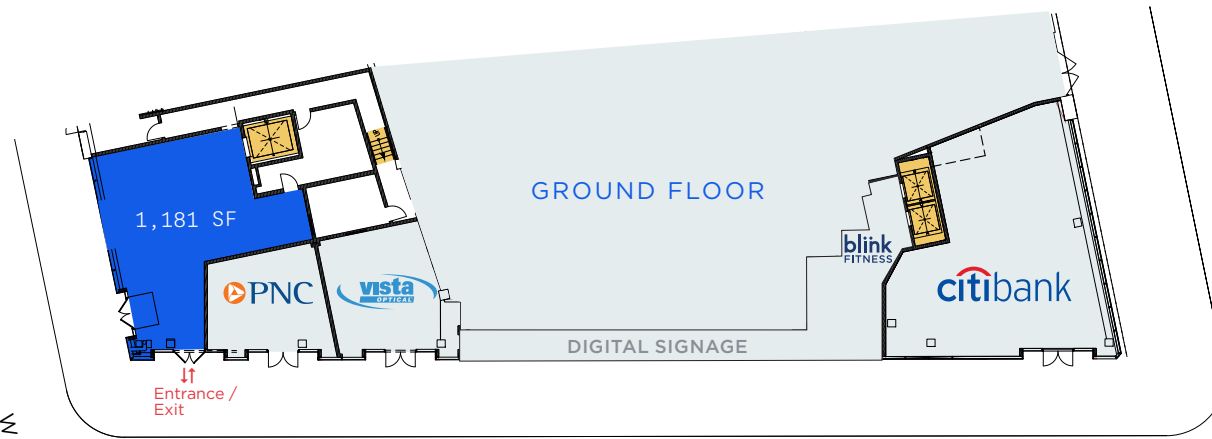


**DEMISED PREMISES**

Ground Floor	1,181 SF
Second Level	8,240 SF
<b>TOTAL</b>	<b>9,421 SF</b>

**ITEMS TO NOTE**

- Escalator-up installed
- Elevator installed
- Gas available



BROADWAY

BROADWAY

WEST 179TH STREET

WEST 178TH STREET

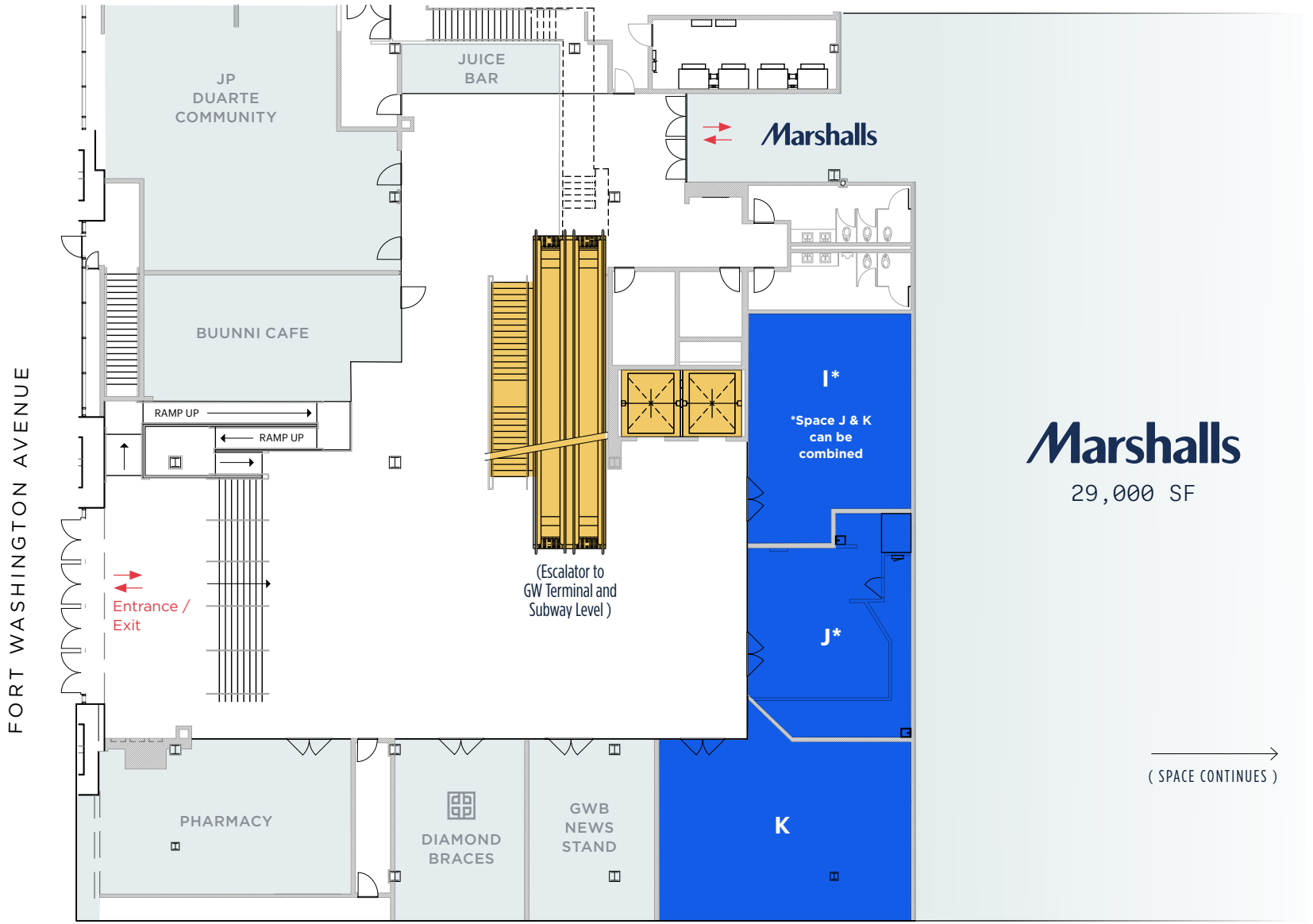


OCCUPIED SPACES
  AVAILABLE SPACES FOR LEASE
  ESCALATOR / ELEVATOR / STAIRS





FORT WASHINGTON / MARSHALLS LEVEL



THE HALL is the working name for the enclosed area of the terminal where shops and offices are already operating and more are available.

**SIZES**

Space I	781 SF*
Space J	734 SF*
Space K	1,076 SF
*can be combined	

**FRONTAGES**

Space K	13 FT 4 IN
---------	------------

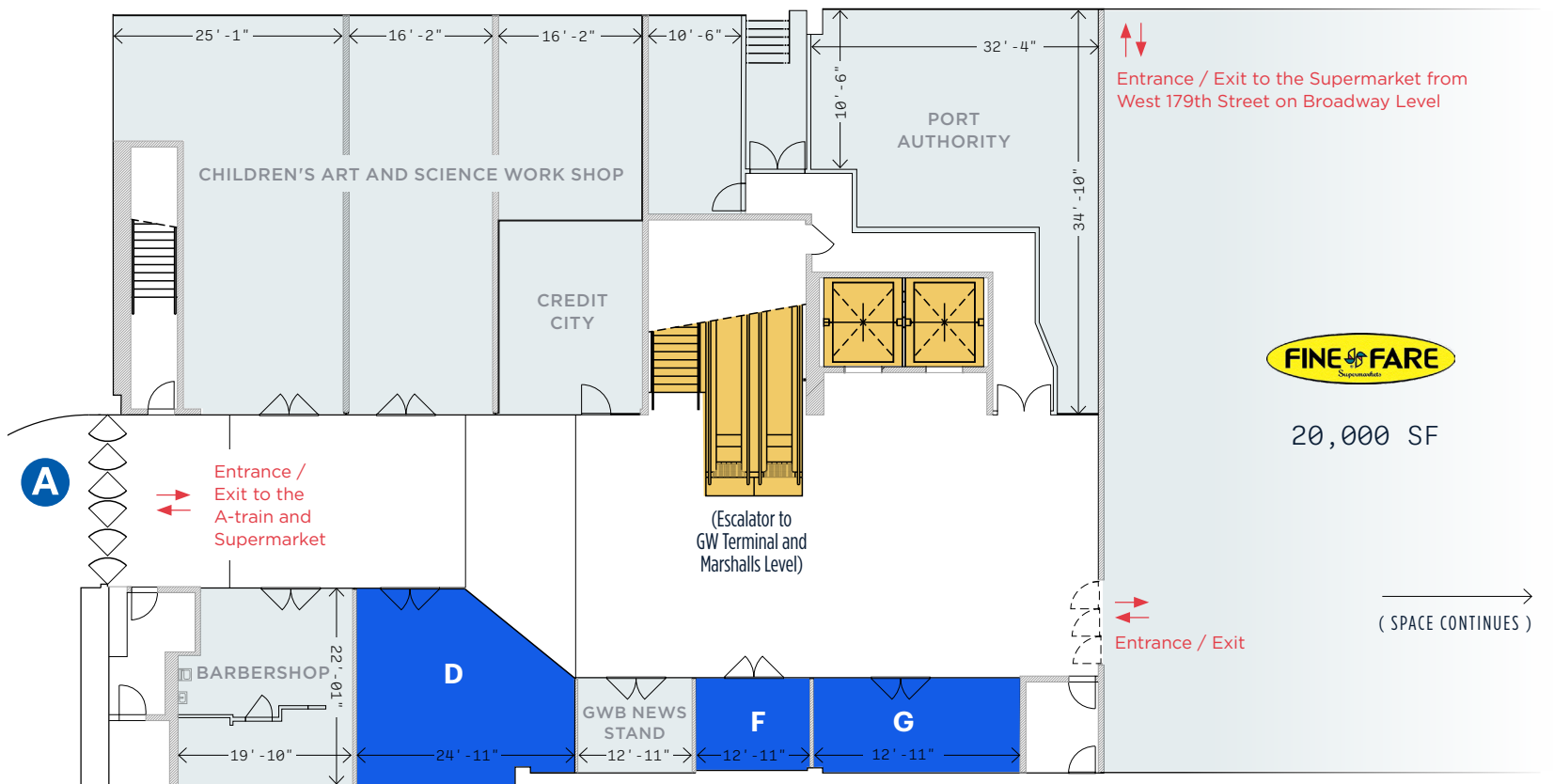
**POSSESSIONS**

Space I	Arranged
Space J	Immediate
Space K	Arranged

**GROSS RENT/MONTH**

Space I	\$4,500
Space J	\$4,300
Space K	\$6,300

SUBWAY / SUPERMARKET LEVEL



**SIZES**

Space D	477 SF
Space F	135 SF
Space G	251 SF

**FRONTAGES**

Space D	24 FT 7 IN
---------	------------

**POSSESSIONS**

Space D	Arranged
Space F	Immediate
Space G	Arranged

**GROSS RENT/MONTH**

Space D	\$2,385
Space F	\$675
Space G	\$1,255





## CONTACT EXCLUSIVE AGENTS

**JASON PENNINGTON**

jpennington@ripcony.com  
212.750.6565

**JESSICA HEDRINGTON**

jhedrington@ripcony.com  
718.233.6565

**RIPCO**  
REAL ESTATE

150 East 58th Street  
15th Floor  
New York, NY 10115  
212.750.6565

**Please visit us at [ripcony.com](http://ripcony.com) for more information**

This information has been secured from sources we believe to be reliable, but we make no representations as to the accuracy of the information. References to square footage are approximate. Buyer must verify the information and bears all risk for any inaccuracies.