



RETAIL SPACE

BEDMINSTER, NJ

2484 LAMINGTON ROAD

On the corner of Lamington Road & Somerville Road

SIZE

Ground Floor 1,900 SF

ASKING RENT

Upon Request

TERM

Existing Sublease Expiration: 6/30/2031

Long term lease available

CO-TENANTS

Trattoria Mediteranea, Bedminster Pizza

CONTACT EXCLUSIVE AGENTS

JON CORBISCELLO

jcorbiscello@ripconj.com

973.420.9029

FLORIAN SUSERMAN

fsuserman@ripconj.com

201.777.2301

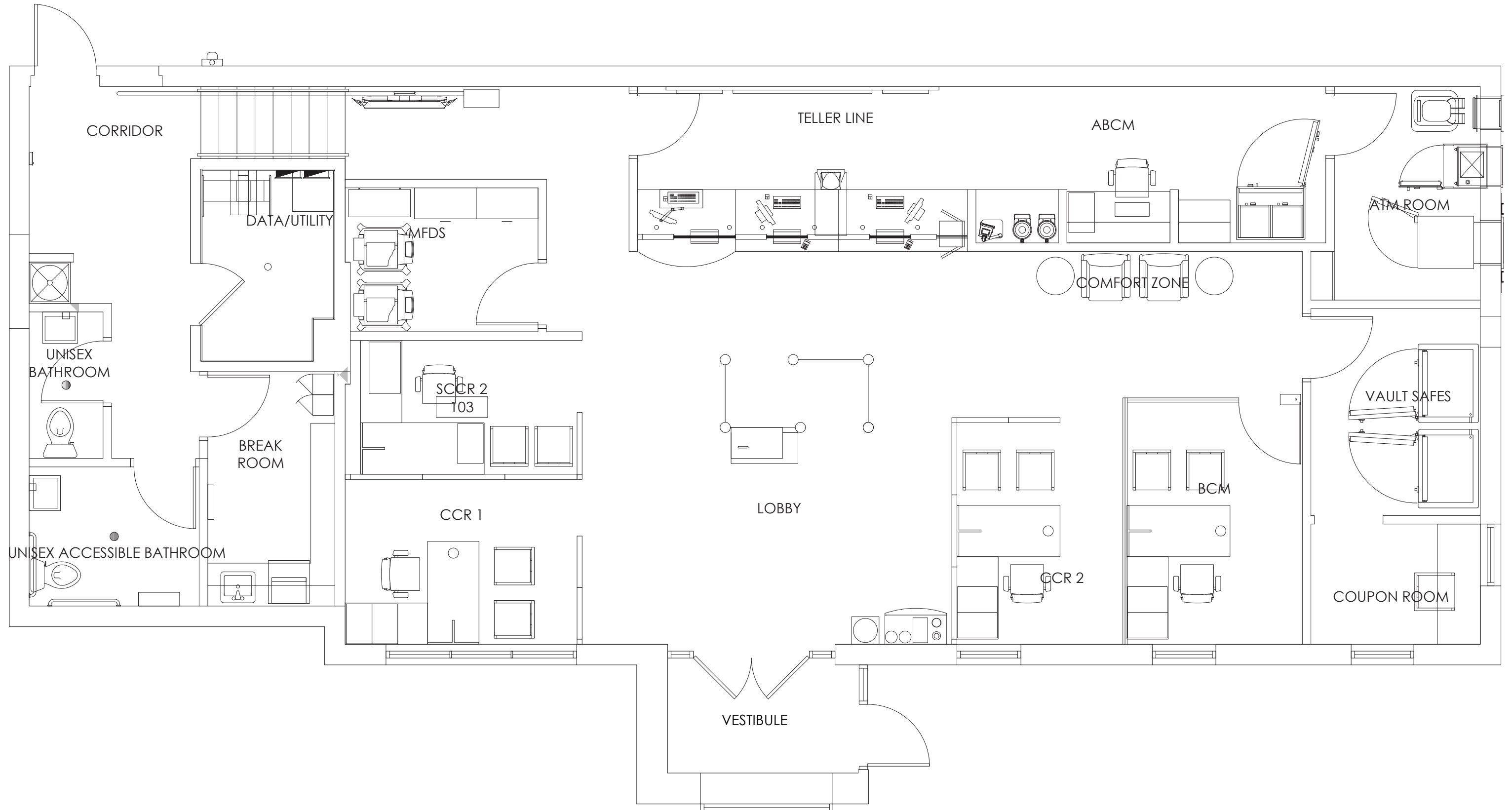
RIPCO
REAL ESTATE

611 River Drive
3rd Floor
Elmwood Park, NJ 07407
201.777.2300

Please visit us at ripconj.com for more information

This information has been secured from sources we believe to be reliable, but we make no representations as to the accuracy of the information. References to square footage are approximate. Buyer must verify the information and bears all risk for any inaccuracies.

FLOOR PLAN



MARKET AERIAL



DEMOGRAPHICS



1 MILE RADIUS

POPULATION
1,296

HOUSEHOLDS
508

MEDIAN AGE
48.3

COLLEGE GRADUATES (Bachelor's +)
633 - 66.0%

TOTAL BUSINESSES
264

TOTAL EMPLOYEES
1,927

AVERAGE HOUSEHOLD INCOME
\$238,351

3 MILE RADIUS

POPULATION
16,977

HOUSEHOLDS
7,109

MEDIAN AGE
45.8

COLLEGE GRADUATES (Bachelor's +)
9,174 - 75.0%

TOTAL BUSINESSES
714

TOTAL EMPLOYEES
13,782

AVERAGE HOUSEHOLD INCOME
\$216,742

5 MILE RADIUS

POPULATION
44,488

HOUSEHOLDS
16,755

MEDIAN AGE
45.6

COLLEGE GRADUATES (Bachelor's +)
22,748 - 73.0%

TOTAL BUSINESSES
1,614

TOTAL EMPLOYEES
32,877

AVERAGE HOUSEHOLD INCOME
\$235,903

*2022 estimates