

**RETAIL SPACE**

# 38 EAST 14TH STREET

Southeast Corner of University Place

**UNION SQUARE**

MANHATTAN | NY

**9,042 SF**

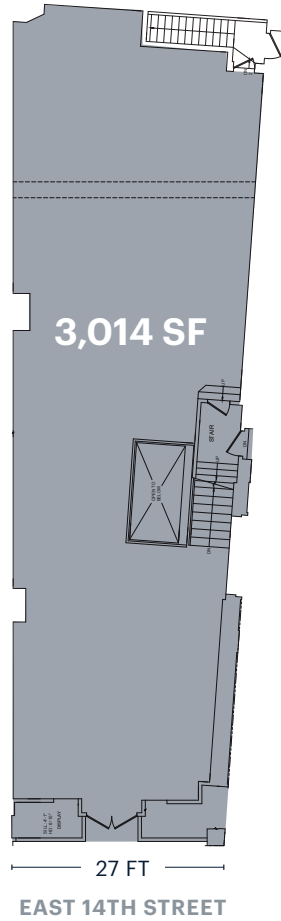
Retail for Lease



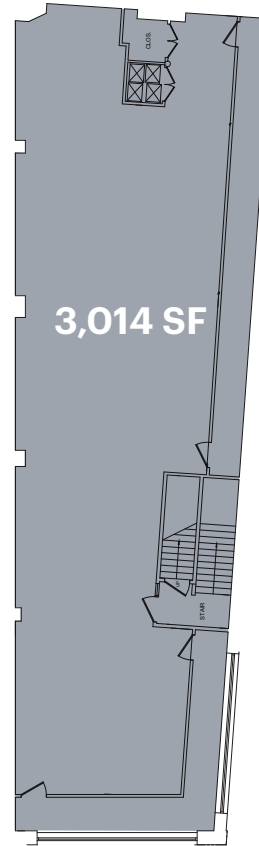
**RIPCO**  
REAL ESTATE

# SPACE DETAILS

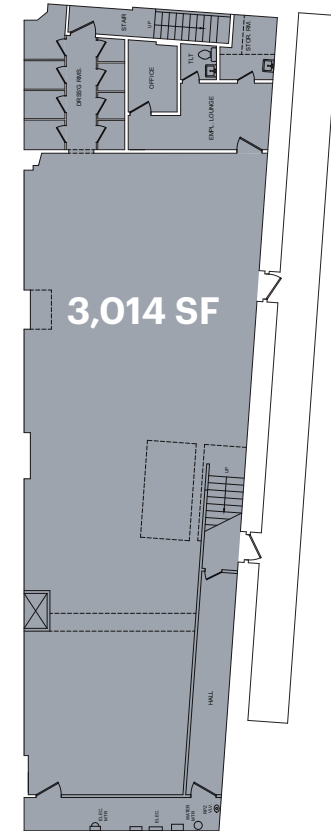
## GROUND FLOOR



## SECOND FLOOR



## BASEMENT



### LOCATION

Southeast Corner of University Place

### SIZE

Ground Floor	3,014 SF
Second Floor	3,014 SF
Basement	3,014 SF
Total	9,042 SF

### FRONTAGE

East 14th Street 27 FT

### CEILING HEIGHTS

Ground Floor	12 FT 9 IN
Second Floor	12 FT 1 IN
Basement	8 FT 9 IN

### STATUS

Vacant (Formerly Bolton's)

### POSSESSION

Immediate

### NEIGHBORS

Whole Foods, DSW, Burlington Coat Factory, Sephora

### COMMENTS

Full building opportunity

Unprecedented visibility on Union Square

All uses are being considered

### TRANSPORTATION

2021 Ridership Report

14 St-Union Sq

**L N Q R W 4 5 6 6**

Annual	13,165,975
Weekday	39,138
Weekend	59,730

# AREA RETAIL



⊕ Coming Soon

## CONTACT EXCLUSIVE AGENTS

**RICHARD SKULNIK**  
 rskulnik@ripcony.com  
 212.750.0756

**BETH ROSEN**  
 brosen@ripcony.com  
 212.750.6565

**LINDSAY ZEGANS**  
 lzegans@ripcony.com  
 646.827.9962

**RIPCO**  
 REAL ESTATE

150 East 58th Street  
 15th Floor  
 New York, NY 10155  
 212.750.6565

Please visit us at [ripcony.com](http://ripcony.com) for more information

This information has been secured from sources we believe to be reliable, but we make no representations as to the accuracy of the information. References to square footage are approximate. Buyer must verify the information and bears all risk for any inaccuracies.