

RETAIL SPACE

1930 BROADWAY

North Block of West 64th Street between Broadway and Central Park West

LINCOLN SQUARE

NEW YORK | NY

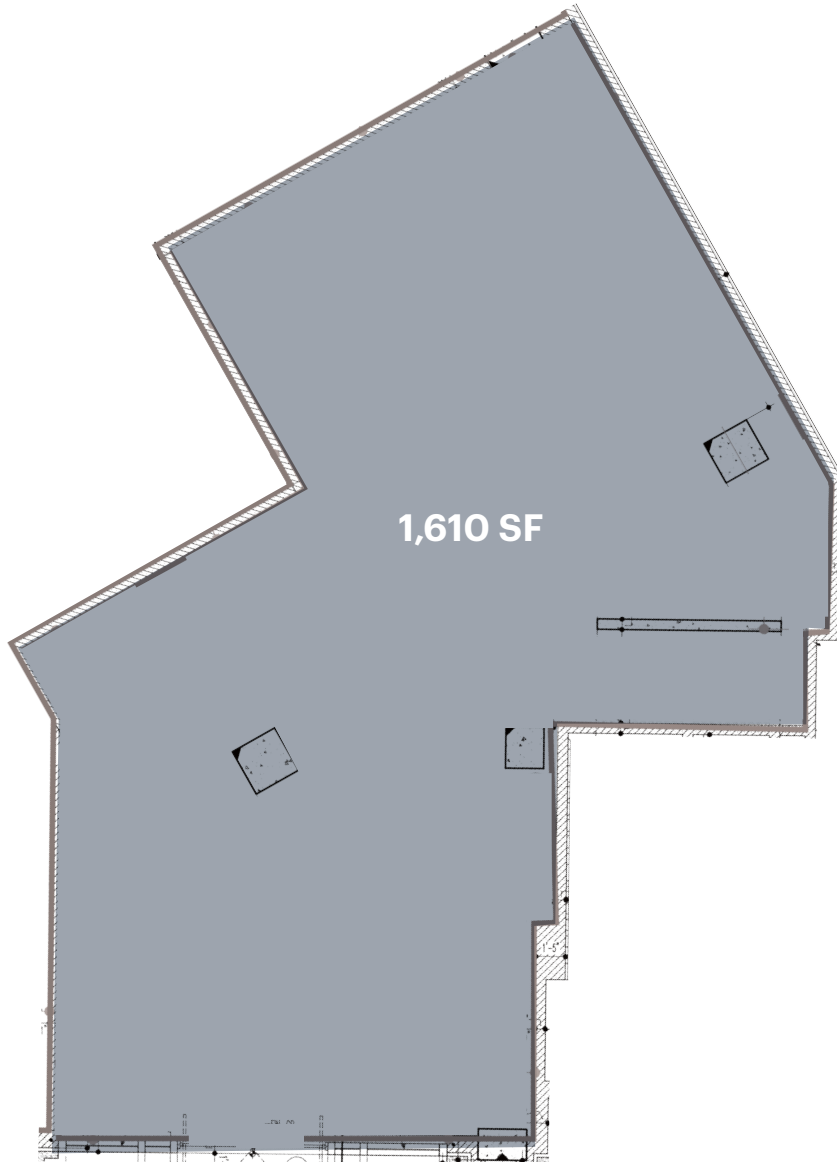
1,610 SF

For Lease



SPACE DETAILS

GROUND FLOOR



23 FT
WEST 64TH STREET

LOCATION

North block of West 64th Street
between Broadway and Central
Park West

SIZE

Ground Floor 1,610 SF

FRONTAGE

West 64th Street 23 FT

CEILING HEIGHTS

Ground Floor 15 FT

STATUS

Formerly Brown Harris Stevens

POSSESSION

Arranged

ASKING RENT

Upon request

TERM

Long term

NEIGHBORS

Rosetta Bakery,
Le Pain Quotidien,
Target,
West Elm,
Time Warner Center,
The Smith

TRANSPORTATION

2021 Ridership Report

59th Street/ Columbus Circle

Annual 9,310,678
Weekday 28,407
Weekend 38,229

A B C D

66th Street

Annual 2,479,656
Weekday 7,845
Weekend 8,927

1 2

AREA RETAIL



Coming Soon

CONTACT EXCLUSIVE AGENTS

BETH ROSEN

brosen@ripcony.com
212.750.6565

BEN DAVIS

bdavis@ripcony.com
212.750.6565

RIPCO
REAL ESTATE

150 East 58th Street
15th Floor
New York, NY 10155
212.750.6565

Please visit us at ripcony.com for more information

This information has been secured from sources we believe to be reliable, but we make no representations as to the accuracy of the information. References to square footage are approximate. Buyer must verify the information and bears all risk for any inaccuracies.