

**COMMUNITY FACILITY/FITNESS/PAD SITE/DRIVE THRU/RESTAURANT-PERMITTED**

# 5901 BAY PARKWAY

Northeast Corner of 60th Street

**BENSONHURST**

BROOKLYN | NY

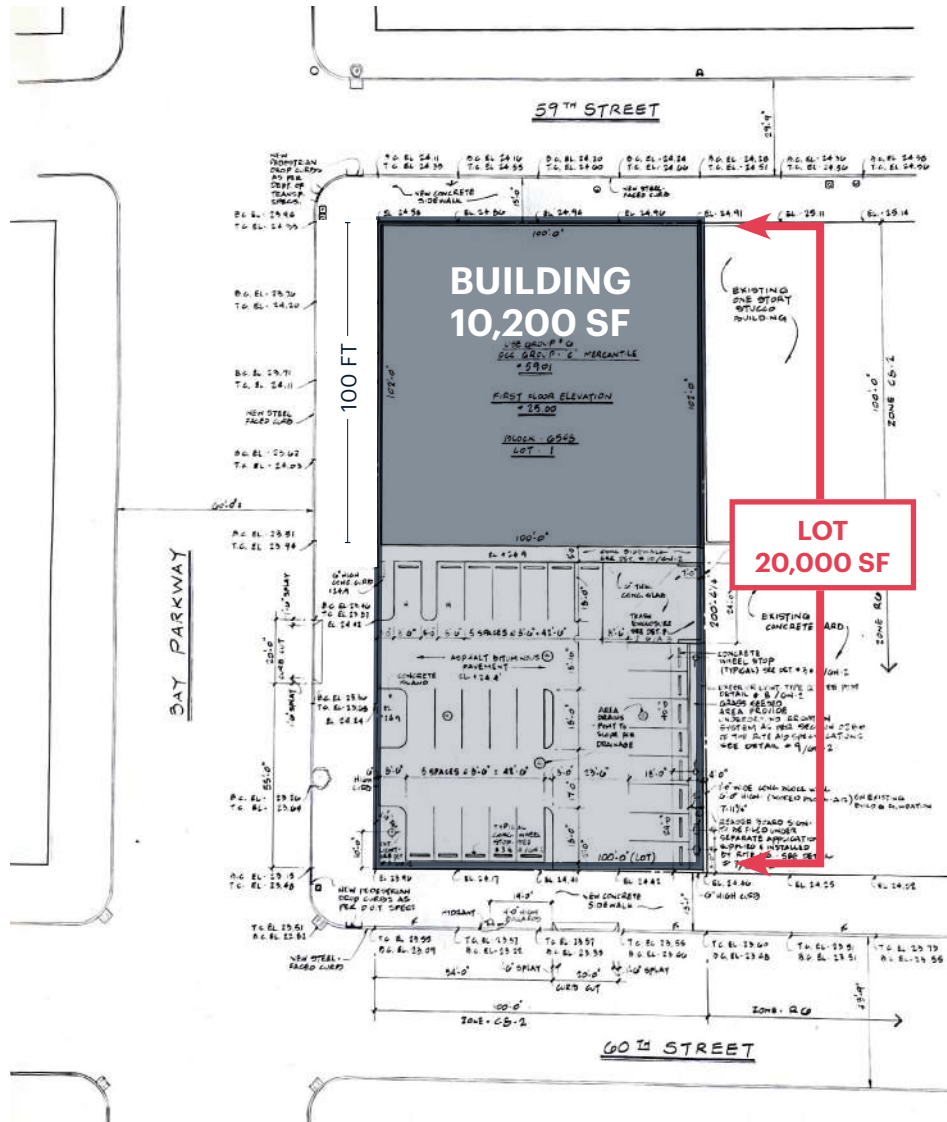
**10,200 SF**

Building For Lease  
+ Parking Lot



# SPACE DETAILS

## GROUND FLOOR



### LOCATION

Northeast Corner of 60th Street

### SIZE

Ground Floor 10,200 SF  
 Lot 20,000 SF

### FRONTAGE

Bay Parkway 100 FT

### CEILING HEIGHTS

Ground Floor 11 FT

### STATUS

Currently Rite Aid

### POSSESSION

June 2025

### TERM

TBD

### RENT

TBD

### NEIGHBORS

Kalko Medical center, National Wholesale Liquidators

### COMMENTS

Parking for 20 cars

### TRANSPORTATION

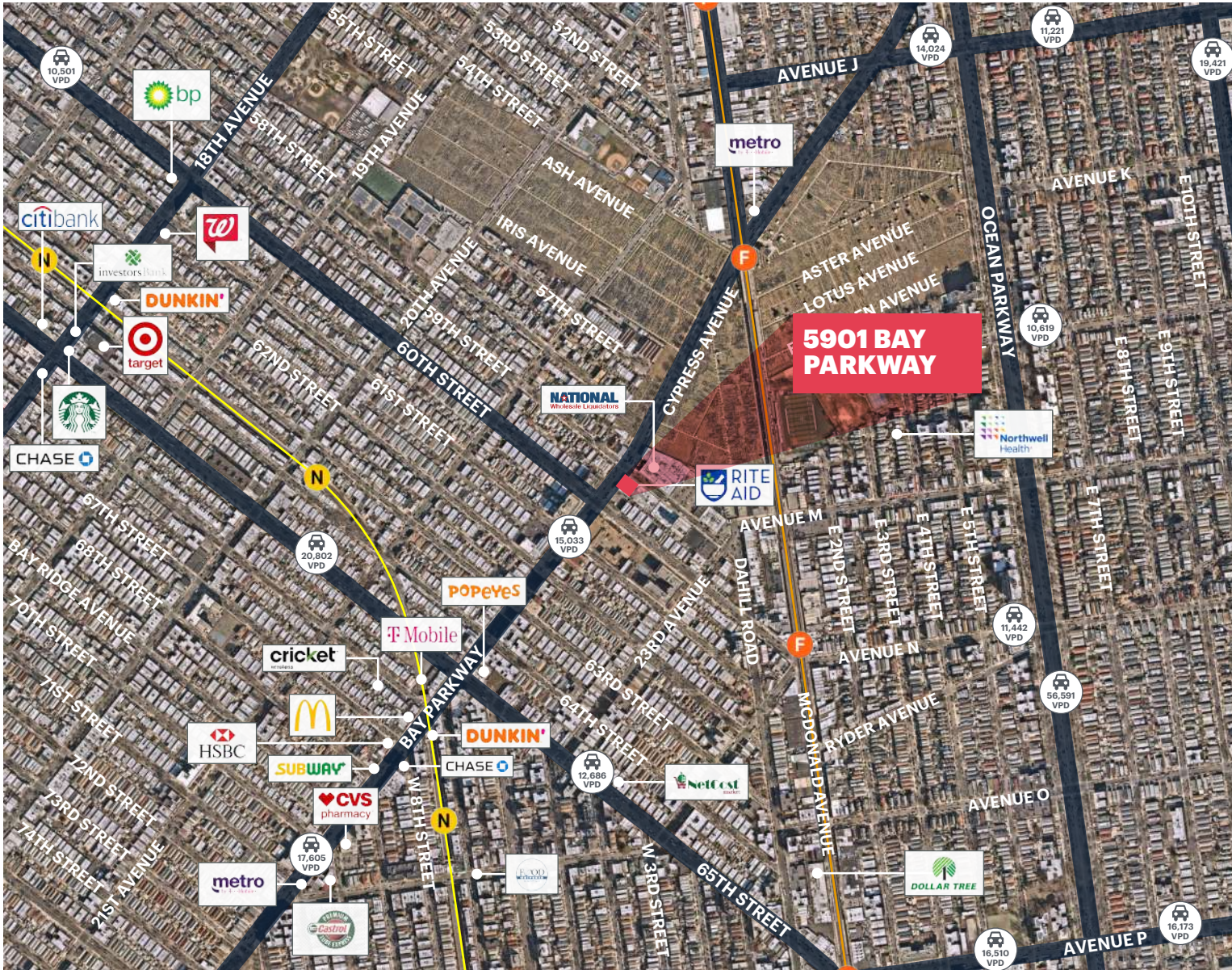
2021 Ridership Report

Avenue N	F
Annual	416,424
Weekday	1,528
Weekend	440

Bay Parkway	F
Annual	186,383
Weekday	684
Weekend	197



## AREA RETAIL



## CONTACT EXCLUSIVE AGENTS

**RICHARD SENIOR**  
rsenior@ripcony.com  
718.233.6565

**ESTHER BUKAI**  
ebukai@ripcony.com  
718.233.6565

**RIPCO**  
REAL ESTATE

32 Court Street  
10th Floor  
Brooklyn, NY 11201  
718.233.6565

Please visit us at [ripcony.com](http://ripcony.com) for more information

This information has been secured from sources we believe to be reliable, but we make no representations as to the accuracy of the information. References to square footage are approximate. Buyer must verify the information and bears all risk for any inaccuracies.