

MIXED USE/QSR/RESTAURANT-EQUIPPED/RESTAURANT-PERMITTED/STREET RETAIL

345 EAST 12TH STREET

Between First and Second Avenues

EAST VILLAGE
MANHATTAN | NY

530 SF

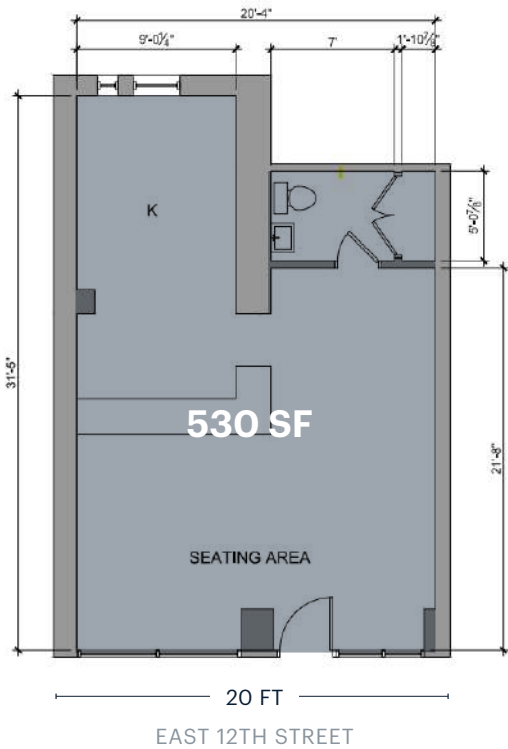
For Lease



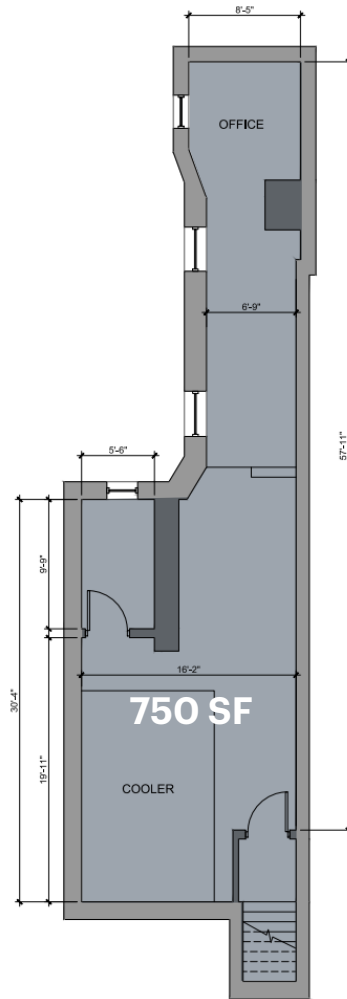
RIPCO
REAL ESTATE

SPACE DETAILS

GROUND FLOOR



LOWER LEVEL (STORAGE)



LOCATION

Between First and Second Avenues

SIZE

Ground Floor 530 SF
Lower Level (Storage) 750 SF

FRONTAGE

East 12th Street 20 FT

CEILING HEIGHTS

Ground Floor 12 FT

STATUS

Currently Sauce Pizzeria

POSSESSION

Jan 15th, 2024

RENT

Upon request

NEIGHBORS

Sauce Pizza, Saltwater Coffee, Motorino Pizza, Lhasa, L Train Vintage, Taverna Kyclades, Brodo

COMMENTS

Fully vented restaurant space
As-is deal
Larger lower level storage space

TRANSPORTATION

2022 Ridership Report

First Avenue	L
Annual	5,337,253
Weekday	15,721
Weekend	24,806

AREA RETAIL

EAST 14TH STREET

EAST 13TH STREET

EAST 12TH STREET

EAST 11TH STREET

EAST 10TH STREET

EAST 9TH STREET

SECOND AVENUE

FIRST AVENUE

AVENUE A

345 EAST 12TH STREET

NEW RESIDENTIAL DEVELOPMENT 181 AVENUE A

CONTACT EXCLUSIVE AGENTS

JASON PENNINGTON
 jpennington@ripcony.com
 718.233.6565

BEN WEINER
 bweiner@ripcony.com
 718.233.6565

+ Coming Soon

RIPCO
 REAL ESTATE

150 East 58th Street
 15th Floor
 New York, NY 10115
 212.750.6565

Please visit us at ripcony.com for more information

This information has been secured from sources we believe to be reliable, but we make no representations as to the accuracy of the information. References to square footage are approximate. Buyer must verify the information and bears all risk for any inaccuracies.