

270

GREENWICH STREET

Prime Retail
opportunity in the
heart of Tribeca

2,700 SF
Adjacent to
Whole Foods

High Ceilings
Minimal Columns
Excellent Co-Tenancy

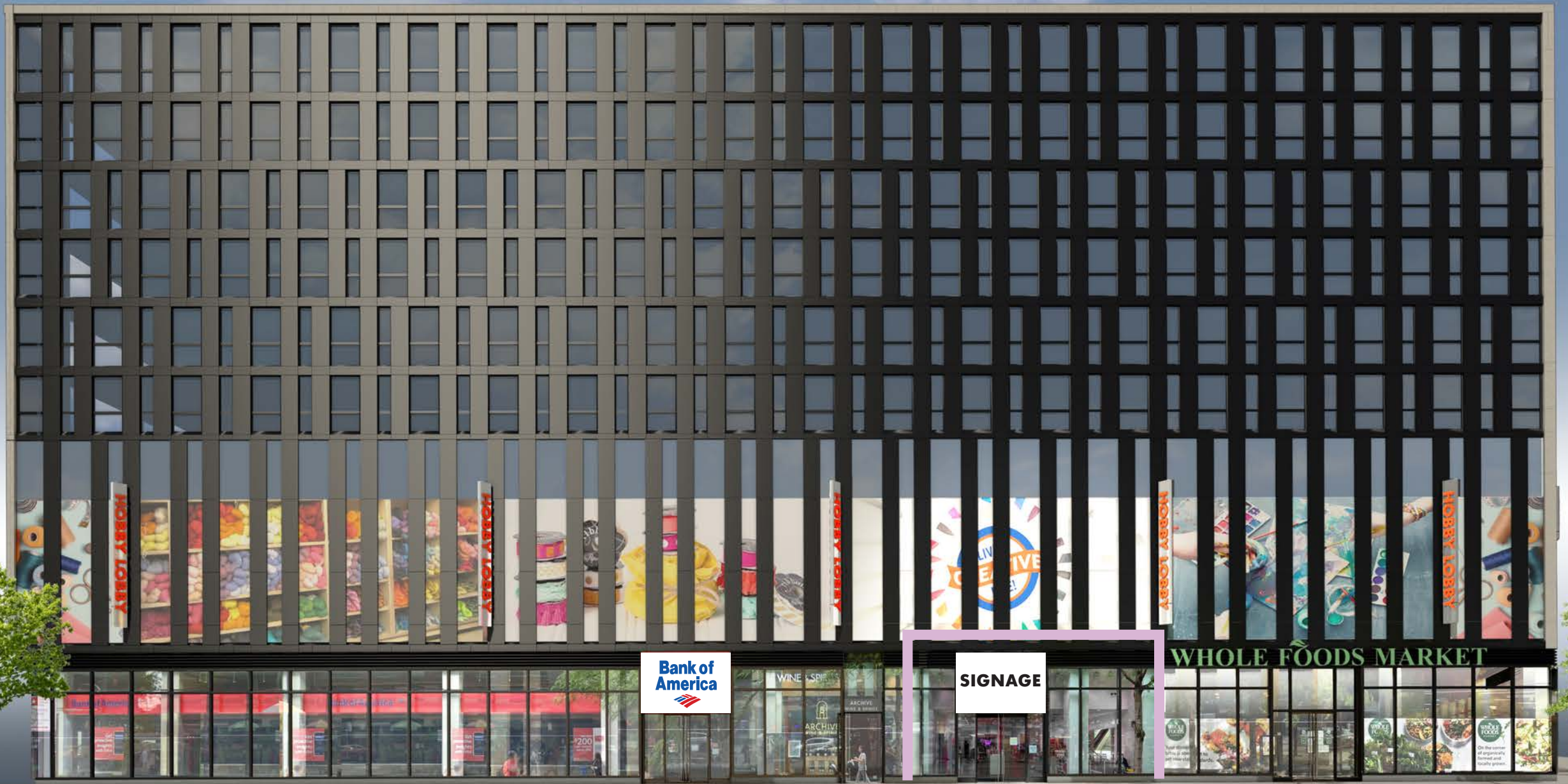


Artist's Rendering

Artist's Rendering

Prime 30 FT Frontage adjacent to Whole Foods

Located at the base of a 35-story luxury residential building with 227 condominiums, 270 Greenwich Street is a striking two-level retail hub



SIGNAGE

30 FT

GREENWICH STREET

Great retail presence adjacent to Whole Foods one block north of Target

GROUND FLOOR

Size

2,744 SF

Ceiling Heights

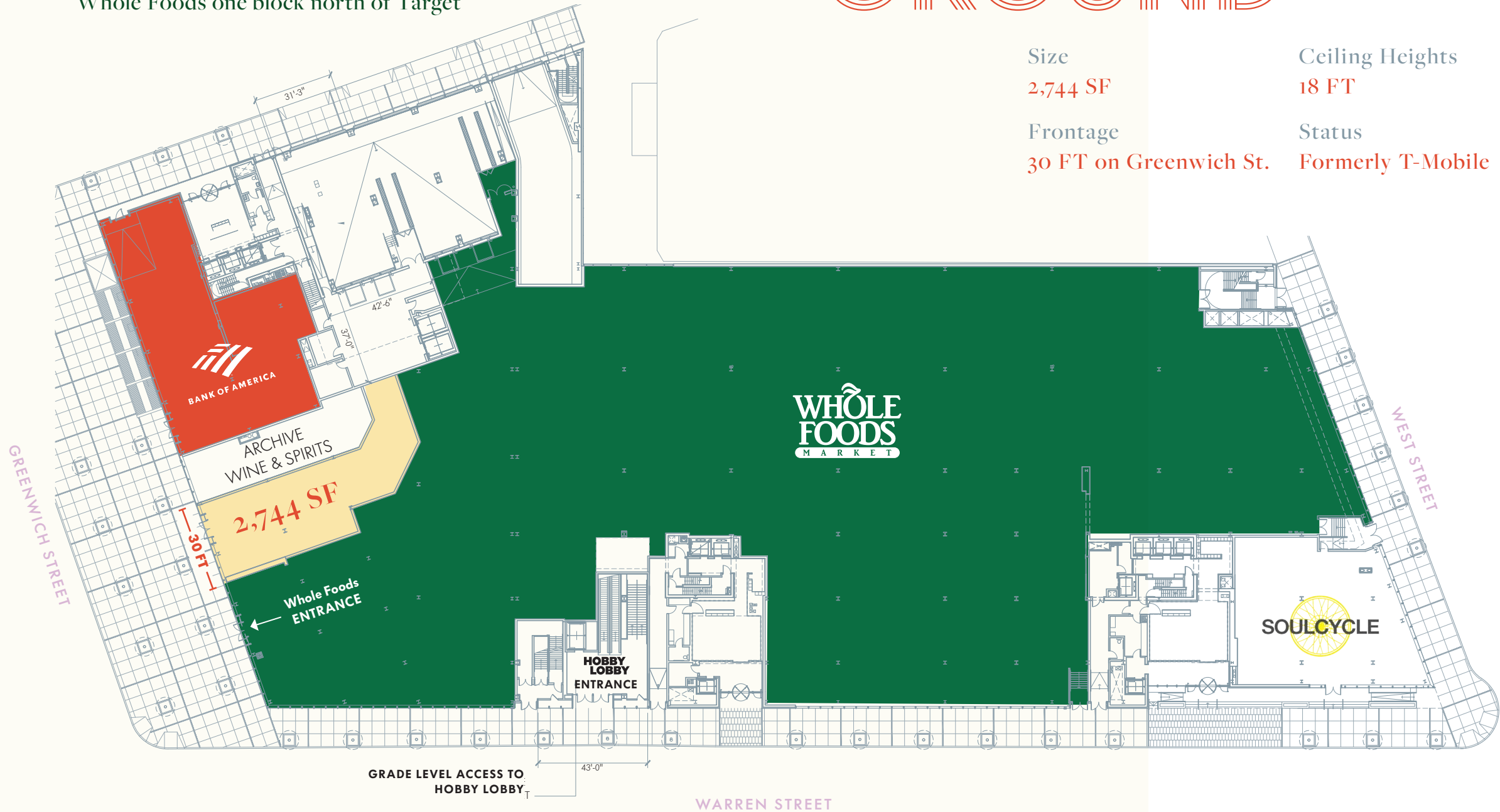
18 FT

Frontage

30 FT on Greenwich St.

Status

Formerly T-Mobile



GRADE LEVEL ACCESS TO HOBBY LOBBY

WARREN STREET



GREENWICH STREET

Contact Exclusive Agents

PETER RIPKA
 PRIPKA@RIPCONY.COM
 212.750.6565

ANDREW MANDELL
 AMANDELL@RIPCONY.COM
 212.750.0505

SAM MARTORELLA
 SMARTORELLA@RIPCONY.COM
 212.230.5882

RIPCO
 REAL ESTATE

150 East 58th Street
 15th Floor
 New York, NY 10155
 212.750.6565

Please visit us at ripcony.com for more information

This information has been secured from sources we believe to be reliable, but we make no representations as to the accuracy of the information. References to square footage are approximate. Buyer must verify the information and bears all risk for any inaccuracies.