

OFFICE/MEDICAL SPACE

333 15TH STREET

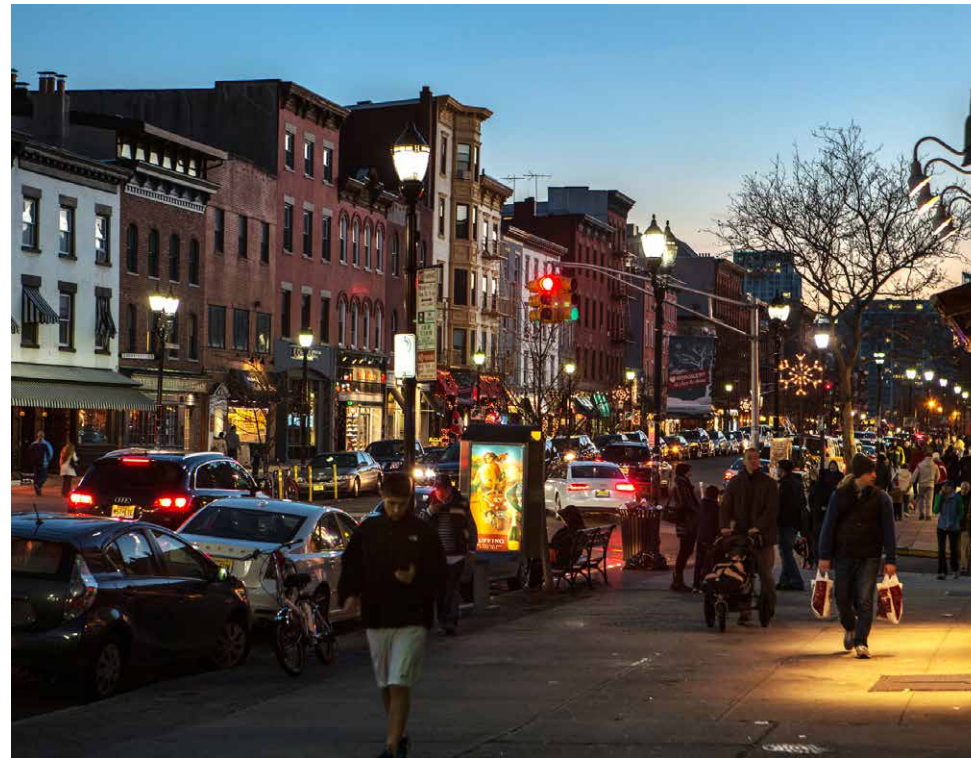
Uptown Hoboken

HOBOKEN
NEW JERSEY

2,510 SF
Office/Medical
Space Available



RIPCO
REAL ESTATE



SIZE

Third Floor 2,510 SF

TERM

10 Years

RENT

Upon Request

NNN's

\$9.00 psf (est.)

POSSESSION

Immediate

CO-TENANTS

West Elm, Gravity Vault, Tenafly Pediatrics, Excel Physical Therapy, SLT, Hoboken Smile Dental, Hudson Table

NEIGHBORS

Trader Joe's, Pilsner Haus & Biergarten, Lightbridge Academy, CVS, Walgreen's, Mile Square Theatre

COMMENTS

- Eco-friendly building
- Oversized windows & solar tubes, natural light
- 100% outside air ventilation
- Year-round optimal humidity
- On-site bike storage

SURROUNDING RESIDENTIAL - OVER 2,760 UNITS

- Edge Lofts - 34 Units
- Artisan on Grand - 39 Units
- The Bexley - 130 Units
- Harlow - 152 Units
- Park & Garden - 213 Units
- The Jordan - 159 Units
- 1125 Jefferson - 54 Units
- The Rivington - 240 Units
- 1000 Maxwell Place - 58 Units
- 1400 Hudson Street - 236 Units
- 1425 Hudson Street - 99 Units
- 1025 Maxwell Place - 169 Units
- 1100 Maxwell Place - 210 Units
- 1125 Maxwell Place - 169 Units
- 1500 Hudson Street - 247 Units
- Harborside Lofts - 116 Units
- 1450 Washington Street - 157 Units
- 1500 Washington Street - 278 Units

1

MINUTE



Walk to Willow Ave Bus Stop to NYC



Drive to Lincoln Tunnel

10

MINUTE



Drive/Bike ride to Hoboken Terminal

16

MINUTE



Ferry ride to Midtown

30

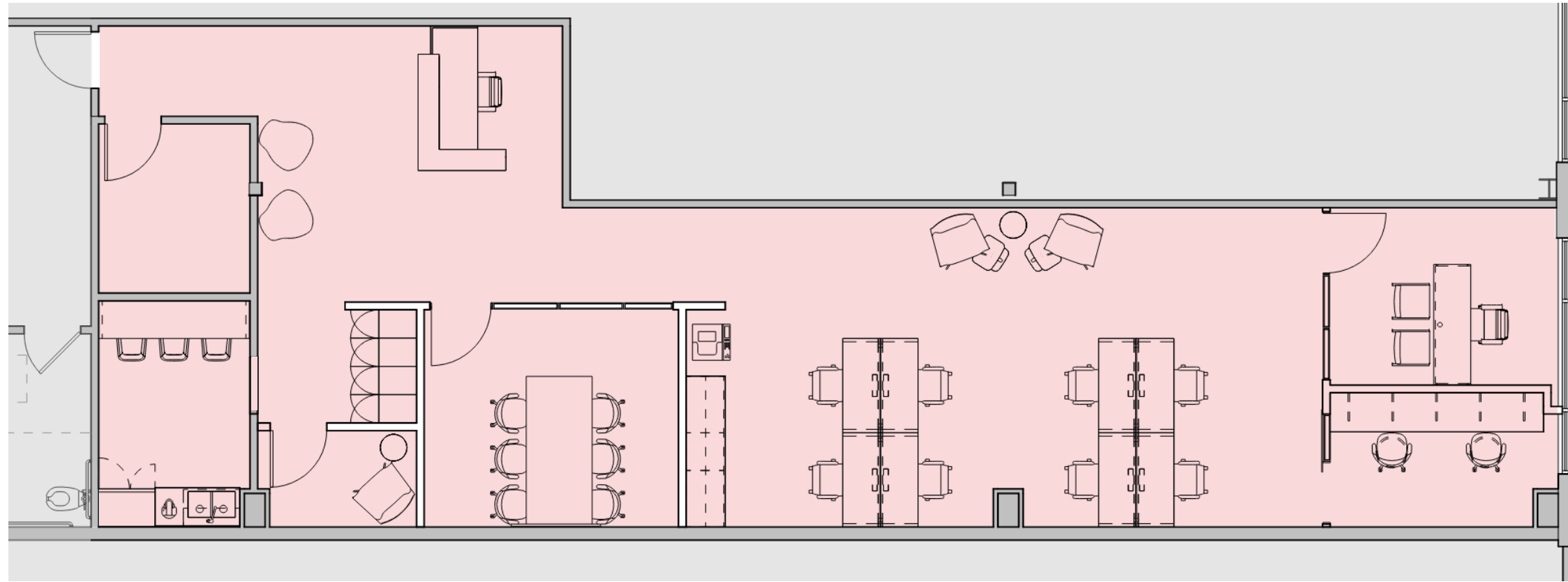
MINUTE



Drive to Midtown

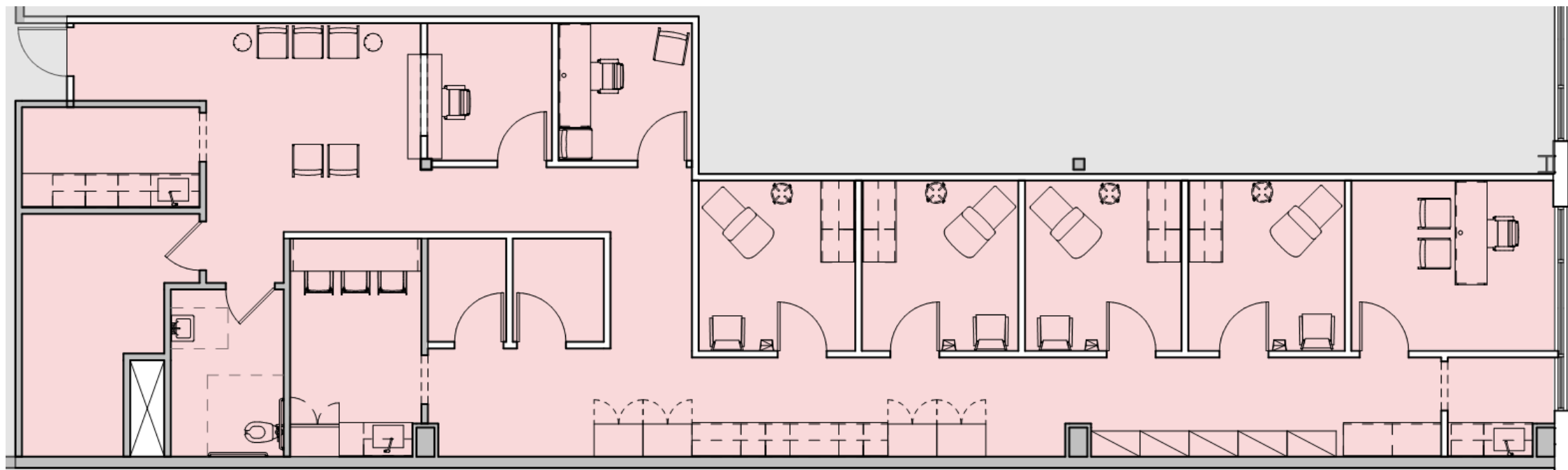
OFFICE/MEDICAL PROPOSED SPACE PLANS

GENERAL OFFICE PLAN - 2,510 SF



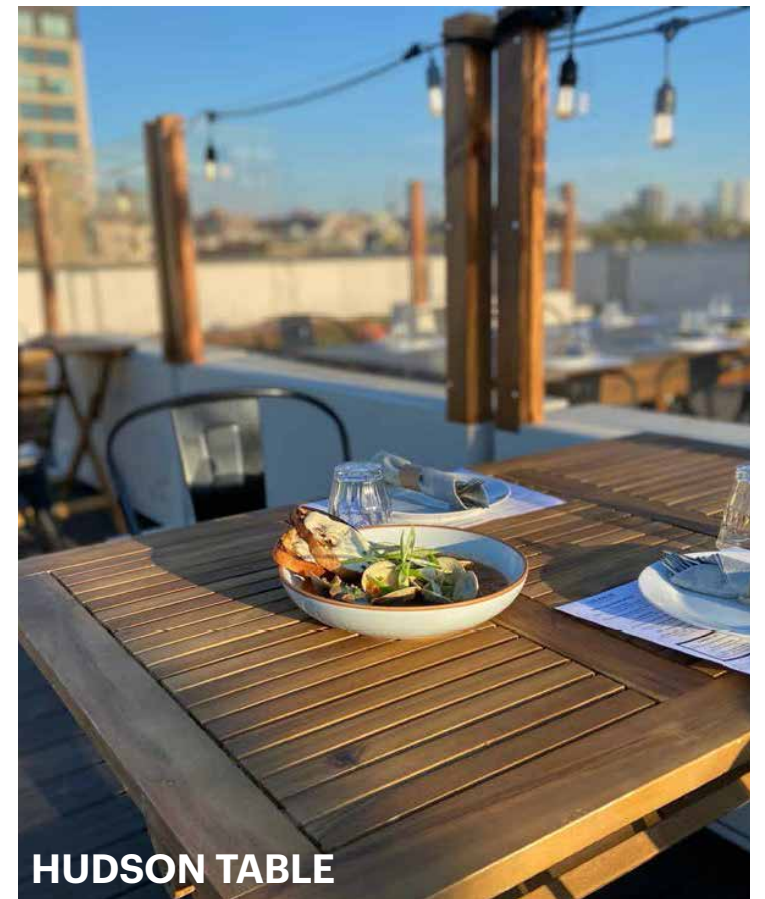
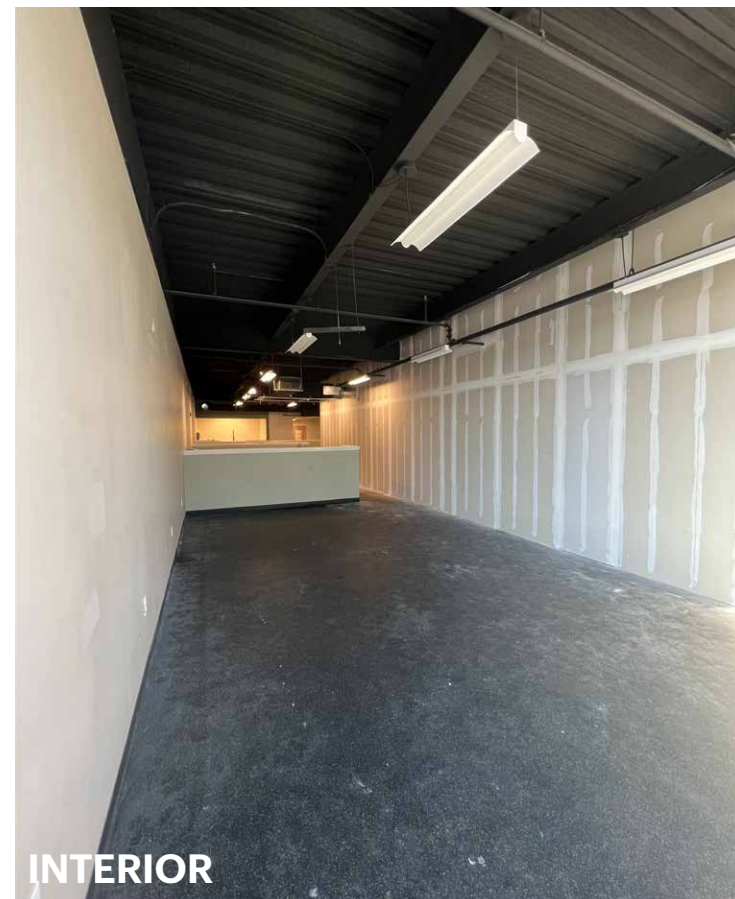
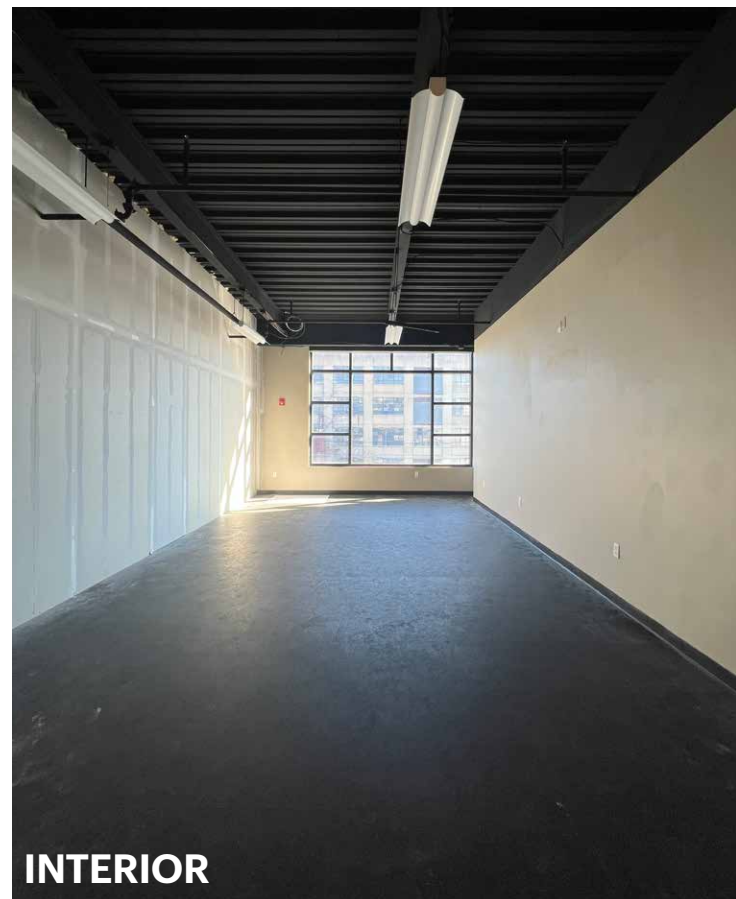
*FOR POSITION ONLY & NOT A DEPICTION OF THE ACTUAL SPACE

MEDICAL OFFICE PLAN

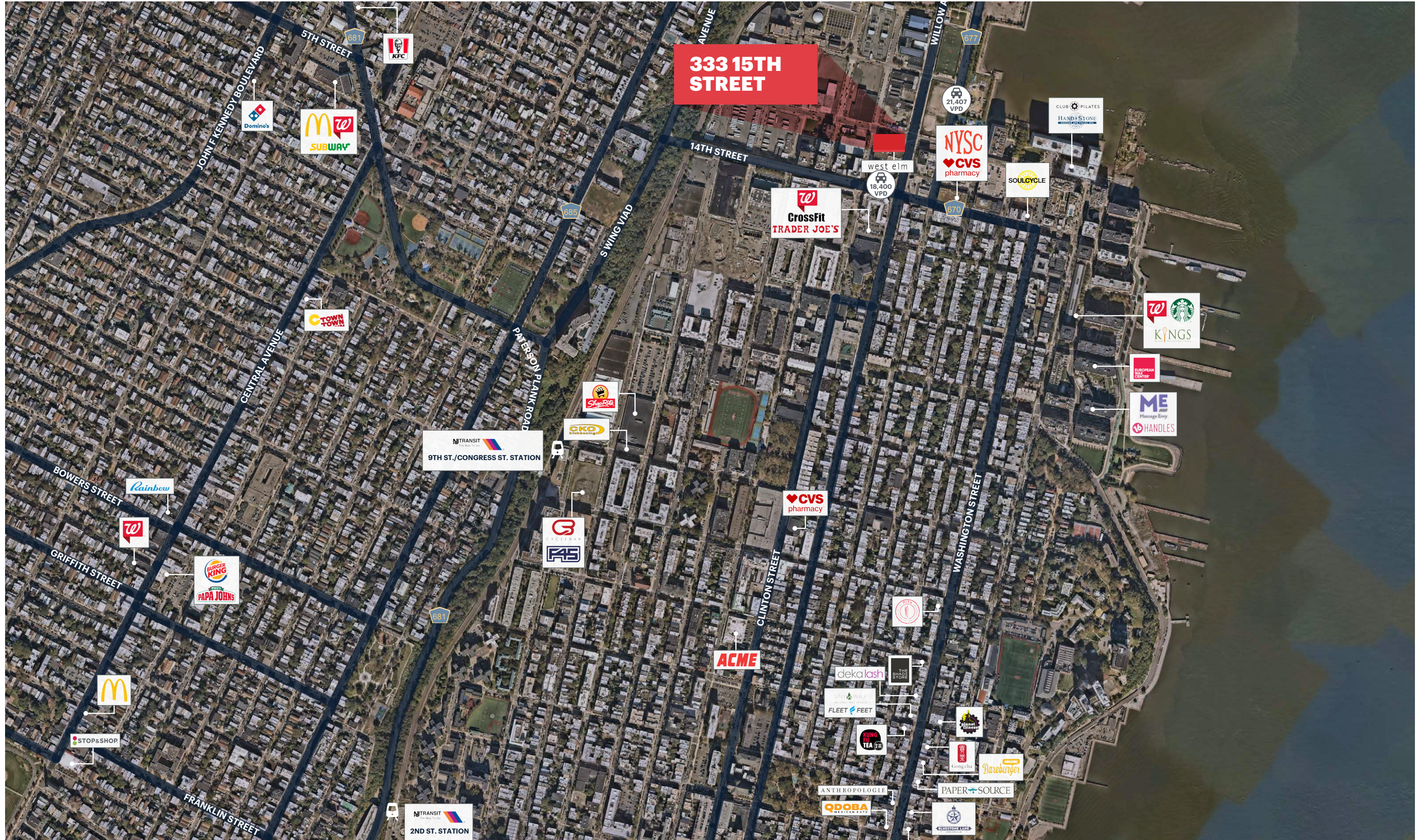


*FOR POSITION ONLY & NOT A DEPICTION OF THE ACTUAL SPACE

SPACE PHOTOS



MARKET AERIAL



MARKET AERIAL



DEMOGRAPHICS



333 15TH STREET

1 MILE RADIUS

POPULATION	101,735	TOTAL BUSINESSES	2,288
HOUSEHOLDS	41,803	TOTAL EMPLOYEES	32,653
MEDIAN AGE	34.6	AVERAGE HOUSEHOLD INCOME	\$168,433
COLLEGE GRADUATES (Bachelor's +)	40,558 - 56.0%		

2 MILE RADIUS

POPULATION	342,464	TOTAL BUSINESSES	15,721
HOUSEHOLDS	155,709	TOTAL EMPLOYEES	245,686
MEDIAN AGE	36.3	AVERAGE HOUSEHOLD INCOME	\$171,213
COLLEGE GRADUATES (Bachelor's +)	155,547 - 61.0%		

3 MILE RADIUS

POPULATION	883,643	TOTAL BUSINESSES	89,739
HOUSEHOLDS	426,183	TOTAL EMPLOYEES	1,416,551
MEDIAN AGE	36.9	AVERAGE HOUSEHOLD INCOME	\$188,511
COLLEGE GRADUATES (Bachelor's +)	458,691 - 68.0%		

*2022 estimates

CONTACT EXCLUSIVE AGENTS

DEBORAH STONE
dstone@ripconj.com
201.636.7414

RIPCO
REAL ESTATE

611 River Drive
3rd Floor
Elmwood Park, NJ
07407201.777.2300

Please visit us at ripconj.com for more information

This information has been secured from sources we believe to be reliable, but we make no representations as to the accuracy of the information. References to square footage are approximate. Buyer must verify the information and bears all risk for any inaccuracies.